

Adam Schlenz	18/Aug/2016	20/Aug/2016						
--------------	-------------	-------------	--	--	--	--	--	--

Witness	
Name	LWD Run Number
Kyle Renton	1,2,3,4
Mark Hicks	1,2,3,4

Mud Properties Record											
Date / Time	LWD Run No.	Measured	Mud	Density	Viscosity	pH	Fluid	Oil /	Source	Total	K+
		Depth (ft.)	Type	(ppg)	(cp)		Loss (cc)	Water		Chlorides (ppm)	(%)
16/Aug/2016 5:23	2	6681	Water Based	9.9	25	9.1	7.8	2 / 88.6	Suction	1500	0.0
17/Aug/2016 16:33	4	8186	Water Based	10.2	42	9.4	7.2	1/99	Suction	1400	0.0

Mnemonics		
Curve	Description	Units
GRAX	Gamma Ray Apparent 0.5 ft Avg	API
ROPA	Rate Of Penetration 3.0 ft Avg	ft/hr
TCDX	Downhole Temperature	deg F
WOBA	Surface Weight on Bit 1.0 ft Avg	klbs

Equipment and Service Data						
LWD Run No.	Tool	Serial Number	Measurement	Bit Offset (ft.)	Max O.D. (in.)	Min I.D. (in.)
1	DIR	12131653	Directional	50.37	8.250	3.250
1	SRIG	12600749	Gamma	46.95	8.250	3.250
2	DIR	11954358	Directional	45.07	8.250	3.250
2	SRIG	12216996	Gamma	41.66	8.250	3.250
3	DIR	12479865	Directional	45.17	8.250	3.250
3	SRIG	13646899	Gamma	41.76	8.250	3.250
4	DIR	11824678	Directional	44.44	8.250	3.250
4	SRIG	13118485	Gamma	41.03	8.250	3.250

Service and Tool Mnemonics		
Mnemonic	Name	Description
DIR	Directional	Wellbore directional survey
SRIG	Inclination and Gamma	Probe based gamma ray and inclination module

Comments
<p>1.) Depth measurements were obtained from a depth control system not supplied or operated by Baker Hughes. Due to the lack of control by Baker Hughes LWD logging engineers, depth calibrations and measurements could not be independently verified and the unverified depths as supplied to Baker Hughes are being used to present logging data.</p> <p>2.) Baker Hughes LWD runs 2 and 4 utilized 6 3/4 inch NaviGamma services (Gamma Ray and Directional) behind an 8 1/2 inch bit and steerable assembly from 12/21/2016 12:00:00 to 12/21/2016 12:00:00.</p>

2106 to 16040 ft MD (2101 to 5831 ft TVD).

3.) Baker Hughes LWD Run 3 did not drill any footage.

4.) All surveys were corrected by Surcon Survey Management Services.

Remarks

Number	Measured Depth (m.)	Hole Section (in.)	LWD Run No.	Remark
1	5000	8.500	2	Gamma ray logging operations began at 5000 ft MD (4984 ft TVD).
2	6800	8.500	4	The interval from 6665 to 6823 ft MD (5821 to 5823 ft TVD) was logged 23.8 hours after being drilled due to an MWD failure.

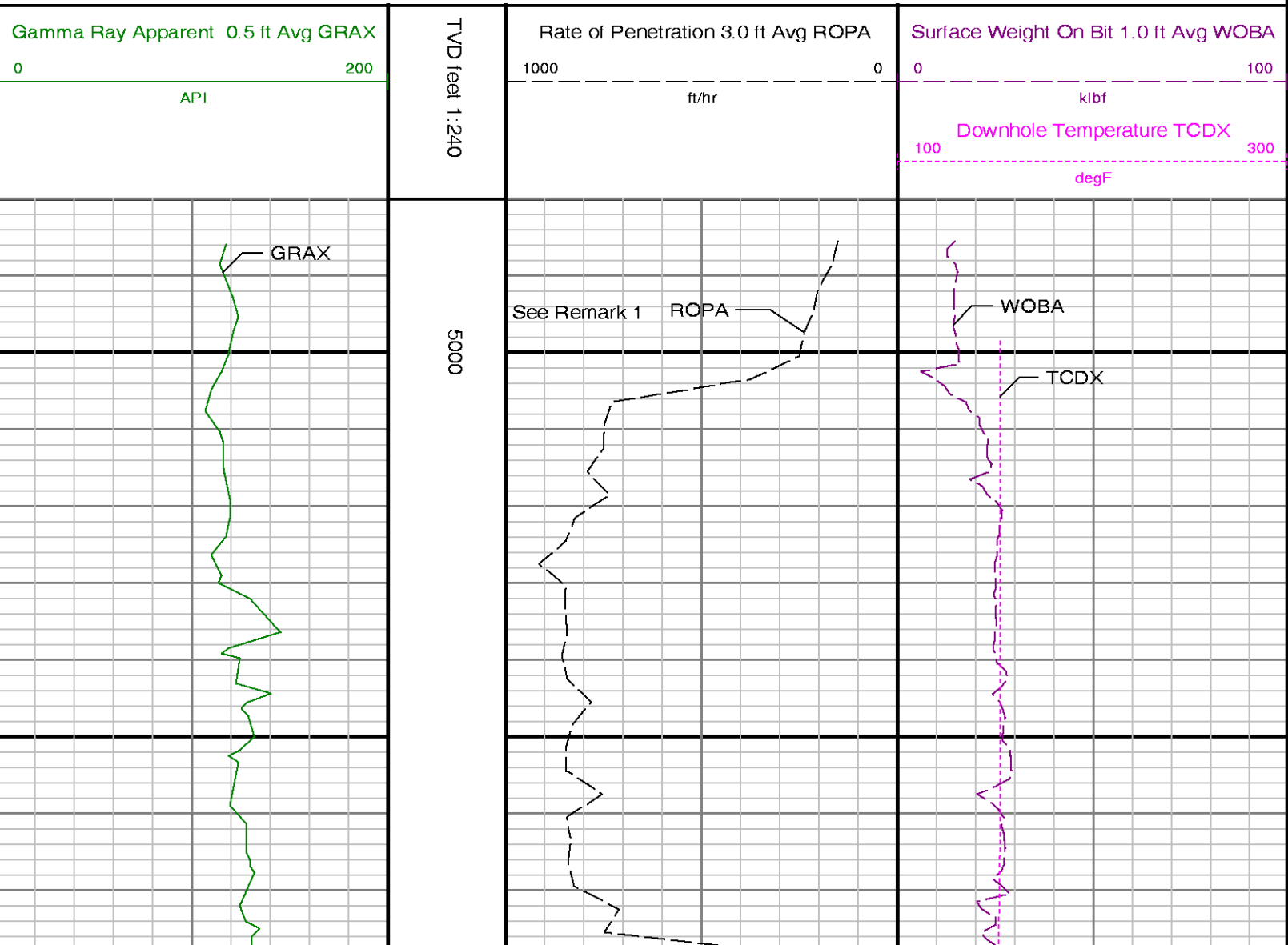


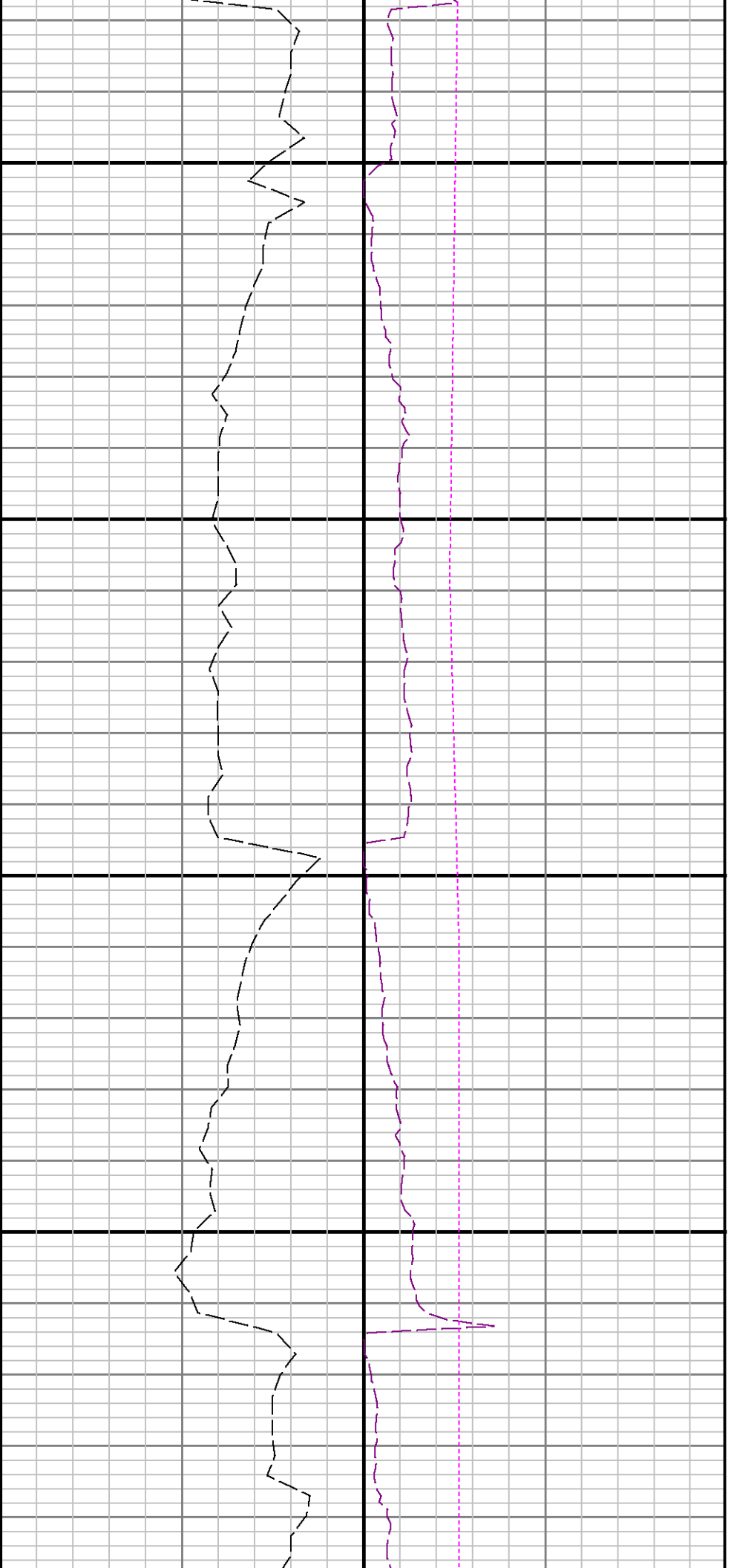
Company : Whiting Oil & Gas Corp

Well : Razor #25O-2443

Interval : 4980.00 - 5850.00 feet

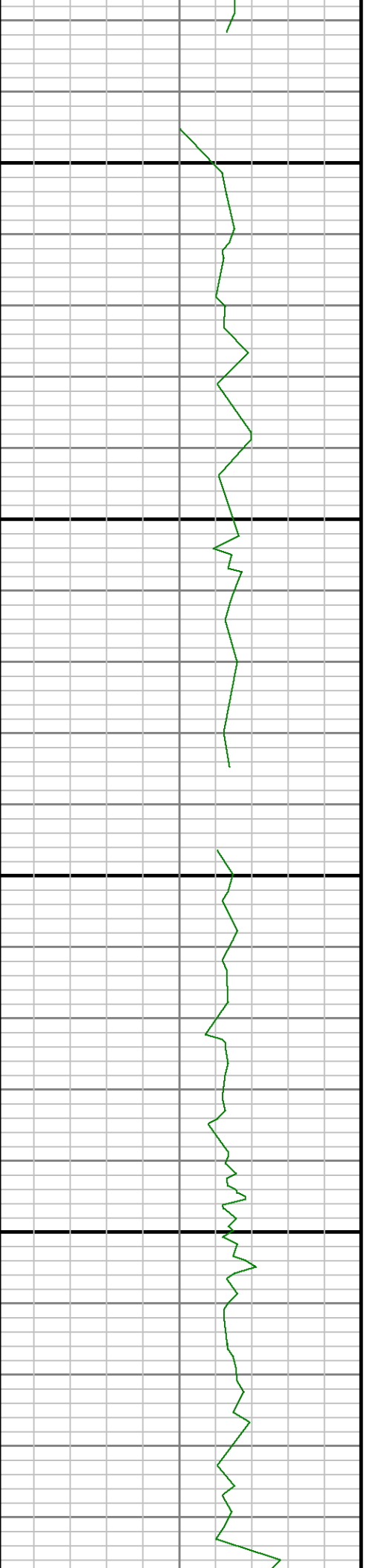
Created : 20/Aug/2016 1:10:24 AM

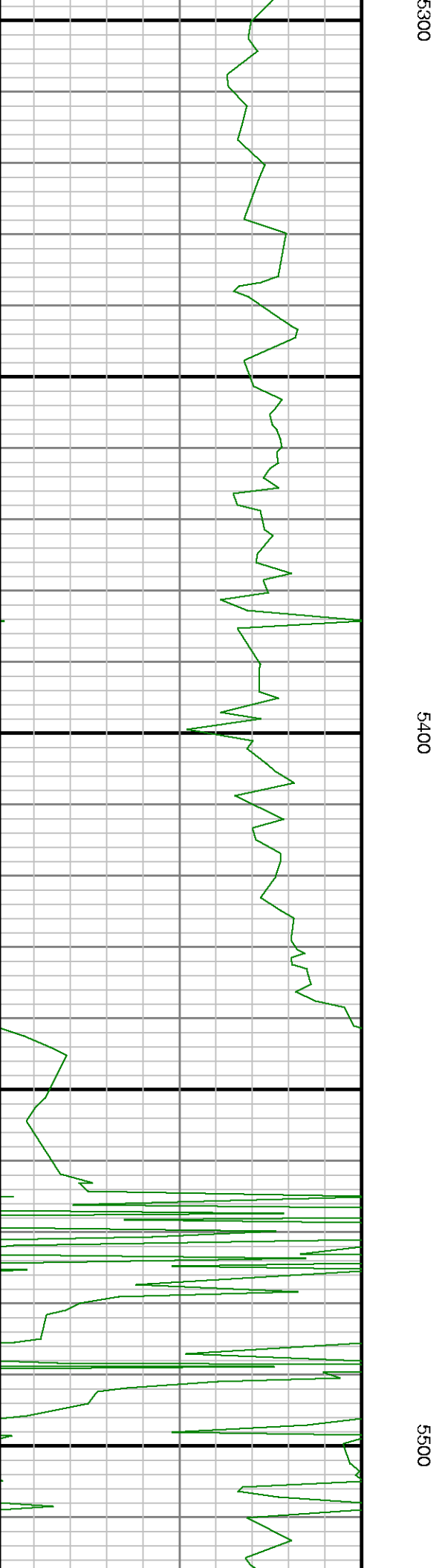
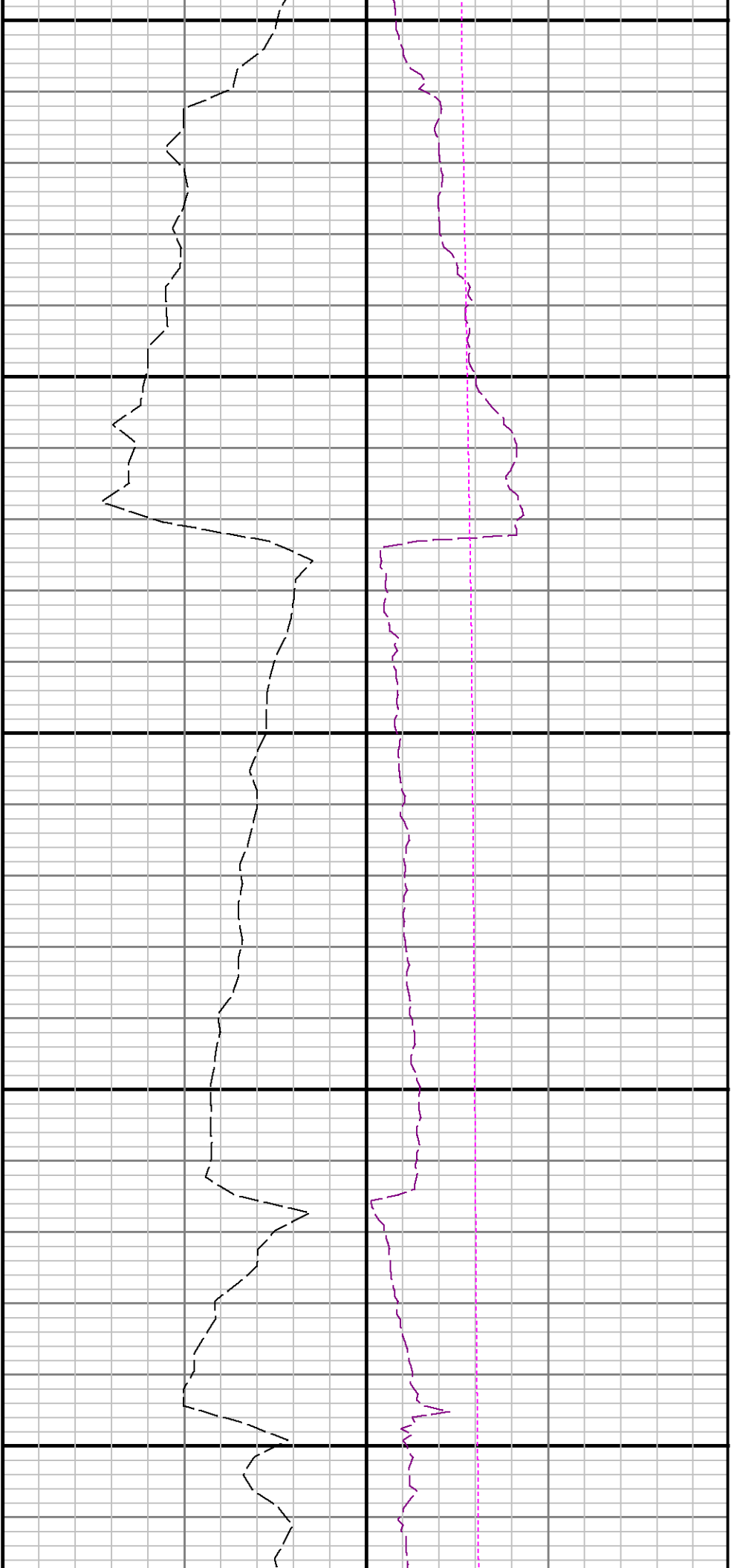


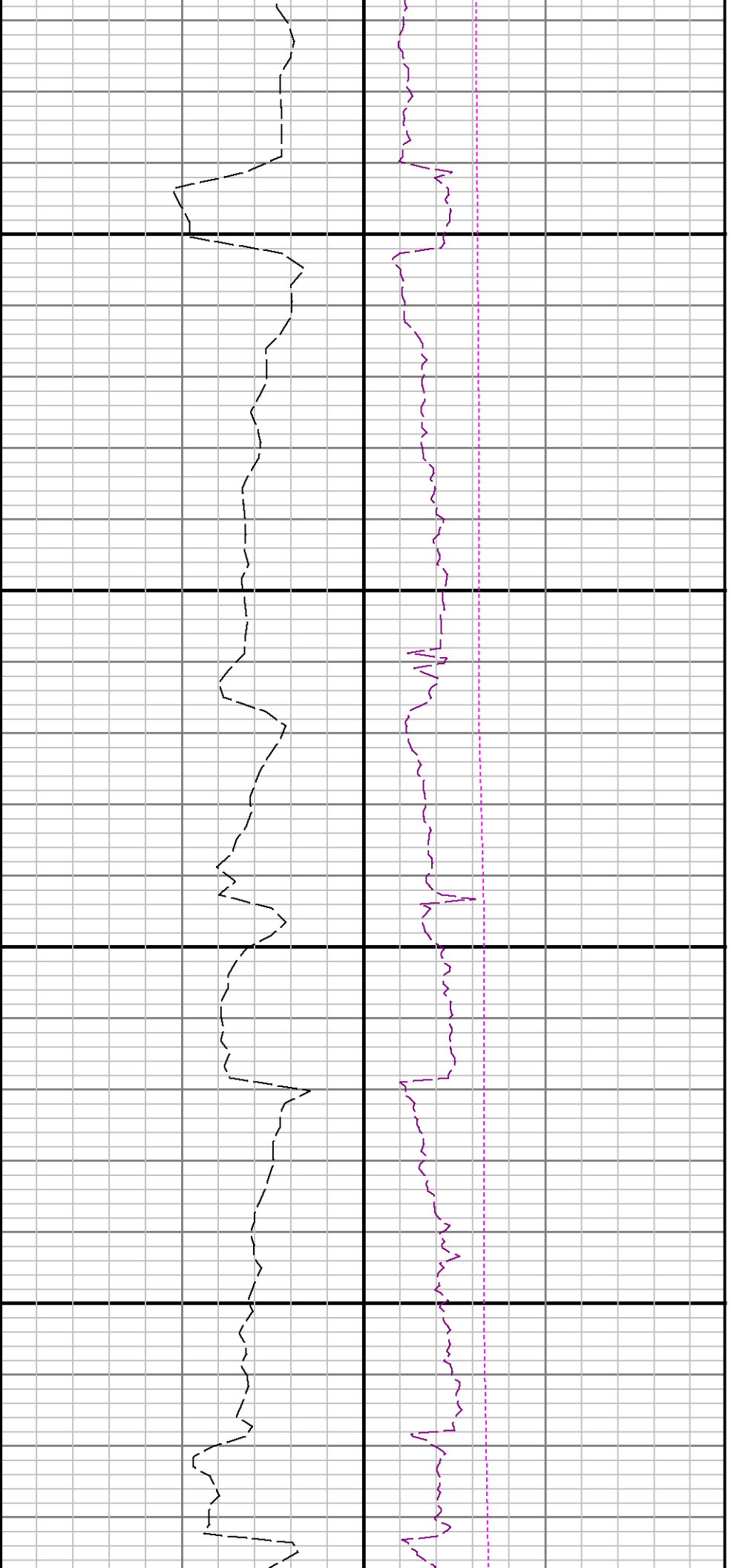


5100

5200

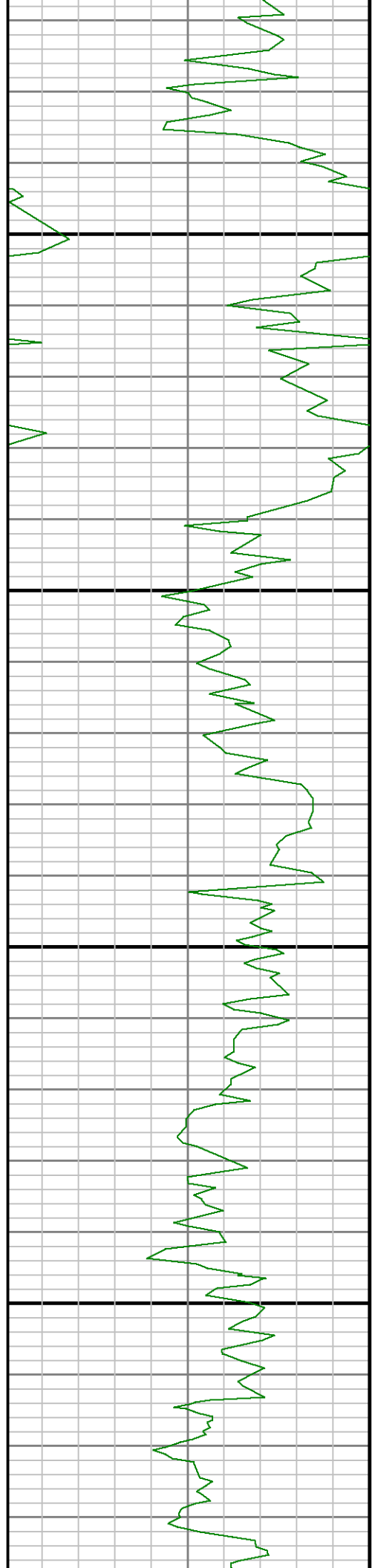


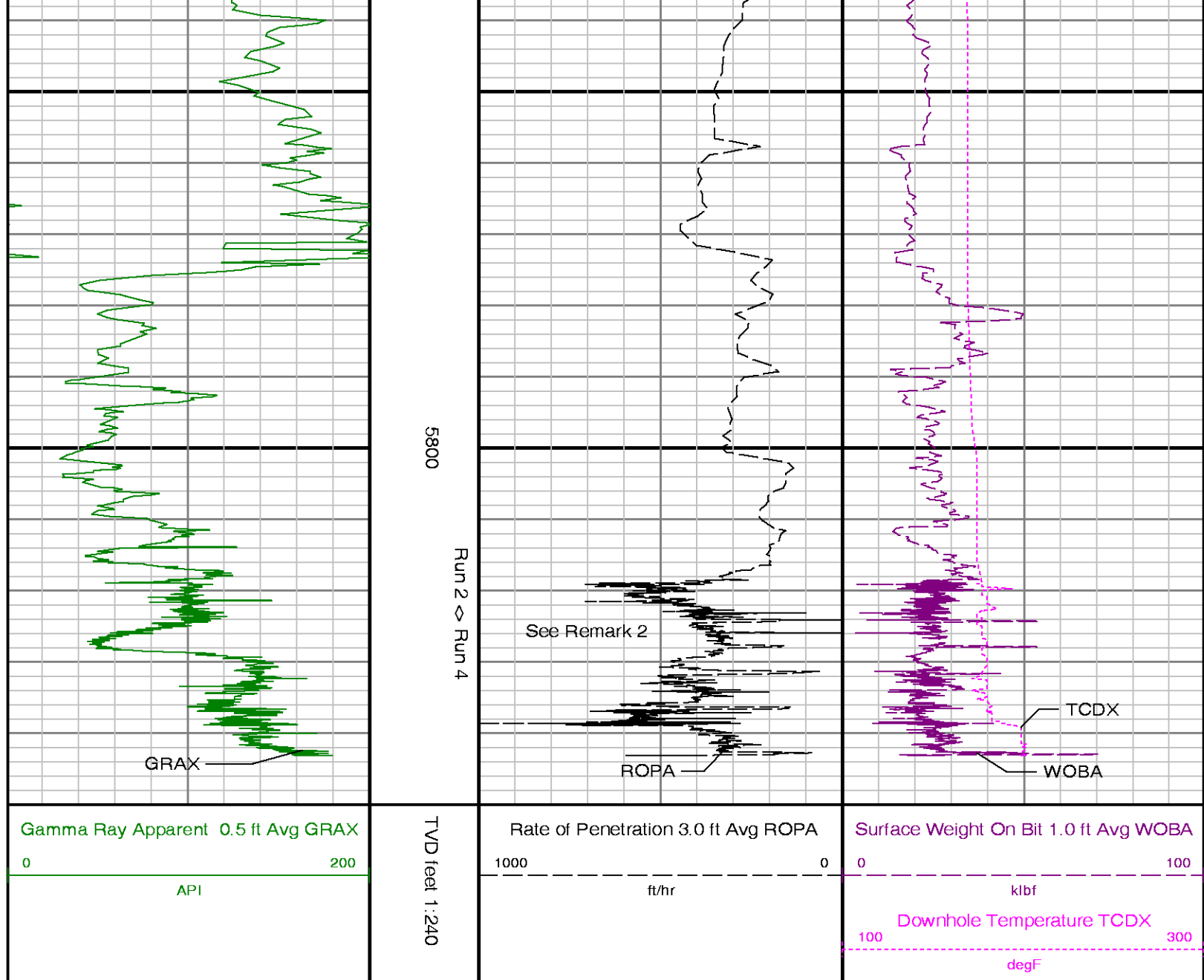




5600

5700





ADVANTAGE Final Survey Listing

Operator : Whiting Oil & Gas Corp	Field : Redtail	API No : 05-123-42634
Well : Razor #25O-2443	Rig : Unit 406	Job : 8038287
Wellbore : Razor #25O-2443 Orig Hole		

Well Origin

Latitude	40.8033 deg	Longitude	-103.8103 deg
North Reference	True	Drill Depth Zero	NULL
Vertical Datum is	Ground Level	Vertical Datum to DDZ	21.00 ft
Vertical Section North	0.00 ft	Vertical Section East	0.00 ft
Vertical Section Azimuth	359.2200 deg	Vertical Section Depth	0.00ft
Grid Convergence	0.0000 deg	Magnetic Declination	7.1400 deg
Total Correction	7.1400 deg	TVD Calculation Method	Minimal Curvature
D-Row Calculation	Magcorr1	Local Magnetic Field	52708 nT
Local Magnetic Dip Angle	67.1600 deg	Local Gravity Field	9.804 m/s^2

Tie	MD	Incl	Azim	North	East	TVD	VS	Incr VS	Crs Len	DLS	Build	Turn
	ft	deg	deg	ft	ft	ft	ft	ft	ft	deg/100ft	deg/100ft	deg/100ft

U	0.00	0.0000	0.0000	0.00	0.00	0.00	0.00	0.00				
	21.00	0.0000	202.7600	0.00	0.00	21.00	0.00	0.00	21.00	0.00	0.00	0.00
	146.00	0.2500	33.3100	0.23	0.15	146.00	0.23	0.27	125.00	0.20	0.20	-135.56
	237.00	0.3400	71.3300	0.48	0.51	237.00	0.47	0.72	91.00	0.23	0.10	41.78
	327.00	1.6700	200.4000	-0.66	0.31	326.99	-0.67	1.88	90.00	2.11	1.48	143.41
	418.00	3.5800	198.4200	-4.60	-1.05	417.89	-4.59	6.05	91.00	2.10	2.10	-2.18
	510.00	5.1700	197.2400	-11.29	-3.19	509.62	-11.24	13.06	92.00	1.73	1.73	-1.28
	601.00	5.1900	195.9300	-19.16	-5.53	600.24	-19.08	21.28	91.00	0.13	0.02	-1.44
	693.00	4.9100	195.4300	-26.96	-7.72	691.89	-26.85	29.38	92.00	0.31	-0.30	-0.54
	784.00	4.5800	193.7300	-34.24	-9.62	782.58	-34.11	36.90	91.00	0.39	-0.36	-1.87
	876.00	4.4900	192.7100	-41.32	-11.28	874.29	-41.16	44.18	92.00	0.13	-0.10	-1.11
	968.00	4.2300	189.2300	-48.18	-12.62	966.02	-48.01	51.17	92.00	0.40	-0.28	-3.78
	1059.00	4.9100	205.7600	-55.00	-14.85	1056.74	-54.80	58.34	91.00	1.62	0.75	18.16
	1241.00	4.7600	207.9800	-68.69	-21.78	1238.09	-68.38	73.68	182.00	0.13	-0.08	1.22
	1333.00	4.8800	209.8200	-75.45	-25.52	1329.76	-75.10	81.41	92.00	0.21	0.13	2.00
	1424.00	5.2100	204.3200	-82.58	-29.14	1420.41	-82.17	89.40	91.00	0.64	0.36	-6.04
	1516.00	5.1900	205.0500	-90.15	-32.62	1512.03	-89.70	97.74	92.00	0.08	-0.02	0.79
	1608.00	4.7700	205.1300	-97.39	-36.01	1603.68	-96.89	105.73	92.00	0.46	-0.46	0.09
	1700.00	3.9500	202.8300	-103.77	-38.86	1695.42	-103.23	112.72	92.00	0.91	-0.89	-2.50
	1791.00	3.3600	198.8900	-109.18	-40.94	1786.23	-108.61	118.52	91.00	0.70	-0.65	-4.33
	1883.00	2.7400	195.7000	-113.85	-42.41	1878.10	-113.26	123.41	92.00	0.70	-0.67	-3.47
	1974.00	2.6900	199.2200	-117.96	-43.70	1969.00	-117.35	127.72	91.00	0.19	-0.05	3.87
	2053.00	2.5500	202.5400	-121.33	-44.99	2047.92	-120.71	131.33	79.00	0.26	-0.18	4.20
	2124.00	2.8400	209.3100	-124.33	-46.45	2118.84	-123.68	134.66	71.00	0.61	0.41	9.54
	2218.00	5.4000	212.0700	-130.11	-49.94	2212.59	-129.41	141.41	94.00	2.73	2.72	2.94
	2312.00	5.0600	208.9800	-137.48	-54.30	2306.20	-136.73	149.98	94.00	0.47	-0.36	-3.29
	2406.00	4.8500	207.7200	-144.62	-58.16	2399.84	-143.82	158.10	94.00	0.25	-0.22	-1.34
	2500.00	5.0500	206.8400	-151.83	-61.87	2493.49	-150.98	166.21	94.00	0.23	0.21	-0.94
	2594.00	5.0400	206.8300	-159.21	-65.60	2587.13	-158.30	174.47	94.00	0.01	-0.01	-0.01
	2688.00	4.9600	204.2400	-166.60	-69.14	2680.77	-165.64	182.66	94.00	0.25	-0.09	-2.76
	2782.00	4.8600	206.9200	-173.85	-72.61	2774.43	-172.85	190.71	94.00	0.27	-0.11	2.85
	2876.00	4.8700	205.8400	-181.00	-76.15	2868.09	-179.94	198.68	94.00	0.10	0.01	-1.15
	2971.00	4.1900	200.9500	-187.87	-79.15	2962.79	-186.77	206.18	95.00	0.82	-0.72	-5.15
	3065.00	3.8500	197.2300	-194.09	-81.31	3056.56	-192.96	212.76	94.00	0.46	-0.36	-3.96
	3159.00	4.4300	204.4100	-200.41	-83.75	3150.32	-199.25	219.54	94.00	0.83	0.62	7.64
	3254.00	4.4400	201.6600	-207.17	-86.62	3245.03	-205.97	226.88	95.00	0.22	0.01	-2.89
	3348.00	3.6900	202.0400	-213.35	-89.10	3338.79	-212.12	233.54	94.00	0.80	-0.80	0.40
	3442.00	5.5000	216.4300	-219.78	-92.91	3432.49	-218.50	241.02	94.00	2.27	1.93	15.31
	3537.00	5.9600	208.9200	-227.76	-98.00	3527.02	-226.41	250.48	95.00	0.92	0.48	-7.91
	3631.00	5.7000	194.9400	-236.54	-101.56	3620.54	-235.14	259.96	94.00	1.53	-0.28	-14.87
	3726.00	5.3400	196.8500	-245.33	-104.06	3715.10	-243.89	269.10	95.00	0.43	-0.38	2.01
	3820.00	4.8200	199.3700	-253.24	-106.64	3808.73	-251.77	277.42	94.00	0.60	-0.55	2.68
	3914.00	4.6700	196.5100	-260.64	-109.03	3902.40	-259.13	285.19	94.00	0.30	-0.16	-3.04
	4009.00	4.5500	188.1500	-268.08	-110.67	3997.10	-266.55	292.81	95.00	0.72	-0.13	-8.80
	4103.00	4.8700	201.3700	-275.48	-112.65	4090.78	-273.92	300.47	94.00	1.20	0.34	14.06
	4197.00	5.4200	208.8500	-283.09	-116.24	4184.41	-281.48	308.89	94.00	0.92	0.59	7.96
	4291.00	4.8800	210.6000	-290.42	-120.42	4278.03	-288.75	317.32	94.00	0.60	-0.57	1.86
	4385.00	6.9600	214.8700	-298.53	-125.71	4371.52	-296.79	327.01	94.00	2.26	2.21	4.54
	4479.00	6.2500	219.3200	-307.16	-132.21	4464.90	-305.34	337.81	94.00	0.93	-0.76	4.73
	4573.00	5.3000	219.3000	-314.48	-138.20	4558.42	-312.57	347.27	94.00	1.01	-1.01	-0.02
Tie	MD ft	Incl deg	Azim deg	North ft	East ft	TVD ft	VS ft	Incr VS ft	Crs Len ft	DLS deg/100ft	Build deg/100ft	Turn deg/100ft
	4668.00	4.7400	213.8000	-321.14	-143.17	4653.05	-319.16	355.58	95.00	0.78	-0.59	-5.79
	4762.00	4.0000	208.4300	-327.25	-146.89	4746.78	-325.22	362.73	94.00	0.90	-0.79	-5.71
	4856.00	2.8600	174.2500	-332.47	-148.21	4840.62	-330.42	368.11	94.00	2.44	-1.21	-36.36
	4951.00	2.6600	169.9100	-337.00	-147.59	4935.51	-334.96	372.69	95.00	0.30	-0.21	-4.57
	5045.00	0.4700	197.6100	-339.51	-147.33	5029.47	-337.47	375.21	94.00	2.40	-2.33	29.47
	5069.00	0.3100	170.8200	-339.67	-147.34	5053.47	-337.63	375.37	24.00	0.99	-0.67	-111.63
	5163.00	7.2200	1.5300	-334.01	-147.15	5147.23	-331.97	381.04	94.00	8.01	7.35	-180.10
	5257.00	15.7600	0.1400	-315.30	-146.96	5239.26	-313.27	399.74	94.00	9.09	9.09	-1.48
	5352.00	22.2000	15.6700	-285.07	-142.07	5329.10	-283.11	430.37	95.00	8.56	6.78	16.35
	5457.00	29.2000	2.1400	-240.28	-135.74	5423.74	-238.41	475.60	105.00	8.66	6.67	-12.89
	5551.00	37.1600	4.2000	-188.97	-132.80	5502.35	-187.14	527.00	94.00	8.55	8.47	2.19

	5645.00	43.2400	0.8000	-128.40	-130.27	5574.13	-126.61	587.62	94.00	6.87	6.47	-3.62
	5739.00	49.7200	1.6900	-60.29	-128.76	5638.82	-58.53	655.75	94.00	6.93	6.89	0.95
	5833.00	58.4700	0.5400	15.76	-127.32	5693.89	17.49	731.81	94.00	9.36	9.31	-1.22
	5927.00	65.1400	359.1200	98.56	-127.60	5738.28	100.28	814.61	94.00	7.22	7.10	-1.51
	6022.00	70.8500	358.0600	186.57	-129.78	5773.86	188.32	902.65	95.00	6.10	6.01	-1.12
	6116.00	75.4300	358.1100	276.46	-132.79	5801.12	278.24	992.59	94.00	4.87	4.87	0.05
	6210.00	86.1500	358.8800	369.08	-135.21	5816.14	370.88	1085.24	94.00	11.43	11.40	0.82
	6305.00	90.5900	358.1700	463.98	-137.66	5818.85	465.81	1180.17	95.00	4.73	4.67	-0.75
	6399.00	90.7400	0.9200	557.96	-138.40	5817.75	559.80	1274.16	94.00	2.93	0.16	2.93
	6493.00	88.8600	0.6500	651.95	-137.12	5818.08	653.76	1368.15	94.00	2.02	-2.00	-0.29
	6587.00	88.7700	0.6800	745.92	-136.03	5820.03	747.71	1462.13	94.00	0.10	-0.10	0.03
	6681.00	88.9200	0.3800	839.90	-135.16	5821.92	841.66	1556.11	94.00	0.36	0.16	-0.32
	6774.00	89.8800	359.4600	932.89	-135.29	5822.89	934.65	1649.11	93.00	1.43	1.03	-0.99
	6869.00	89.4100	359.2400	1027.88	-136.36	5823.48	1029.65	1744.11	95.00	0.55	-0.49	-0.23
	6963.00	88.8000	0.3000	1121.87	-136.74	5824.95	1123.63	1838.09	94.00	1.30	-0.65	1.13
	7056.00	89.2000	1.0000	1214.85	-135.69	5826.57	1216.58	1931.08	93.00	0.87	0.43	0.75
	7150.00	87.4700	0.7100	1308.80	-134.28	5829.31	1310.50	2025.03	94.00	1.87	-1.84	-0.31
	7244.00	88.5200	359.9600	1402.73	-133.74	5832.59	1404.43	2118.97	94.00	1.37	1.12	-0.80
	7338.00	88.3400	0.0500	1496.70	-133.73	5835.17	1498.38	2212.94	94.00	0.21	-0.19	0.10
	7432.00	89.6900	0.4600	1590.68	-133.31	5836.79	1592.35	2306.92	94.00	1.50	1.44	0.44
	7526.00	90.3100	0.6300	1684.68	-132.41	5836.79	1686.32	2400.92	94.00	0.68	0.66	0.18
	7620.00	89.1400	0.5100	1778.67	-131.48	5837.24	1780.30	2494.92	94.00	1.25	-1.24	-0.13
	7714.00	89.6600	359.4900	1872.66	-131.48	5838.22	1874.28	2588.91	94.00	1.22	0.55	-1.09
	7808.00	90.3100	359.3600	1966.66	-132.42	5838.25	1968.28	2682.91	94.00	0.71	0.69	-0.14
	7902.00	89.6000	0.2100	2060.66	-132.78	5838.32	2062.27	2776.91	94.00	1.18	-0.76	0.90
	7997.00	90.1800	359.7500	2155.66	-132.81	5838.50	2157.26	2871.91	95.00	0.78	0.61	-0.48
	8091.00	90.4900	359.2400	2249.65	-133.64	5837.95	2251.26	2965.91	94.00	0.63	0.33	-0.54
	8186.00	89.3200	0.9300	2344.64	-133.50	5838.11	2346.24	3060.90	95.00	2.16	-1.23	1.78
	8280.00	89.8500	1.3100	2438.62	-131.66	5838.79	2440.19	3154.90	94.00	0.69	0.56	0.40
	8375.00	90.2500	1.2700	2533.60	-129.52	5838.71	2535.13	3249.90	95.00	0.42	0.42	-0.04
	8468.00	90.2800	0.5500	2626.59	-128.04	5838.28	2628.09	3342.90	93.00	0.77	0.03	-0.77
	8562.00	91.0800	0.4500	2720.57	-127.22	5837.16	2722.05	3436.89	94.00	0.86	0.85	-0.11
	8657.00	90.0000	0.5400	2815.57	-126.40	5836.27	2817.03	3531.88	95.00	1.14	-1.14	0.09
	8751.00	88.1200	359.8700	2909.55	-126.07	5837.81	2910.99	3625.87	94.00	2.12	-2.00	-0.71
	8845.00	87.7800	0.1700	3003.49	-126.03	5841.17	3004.92	3719.81	94.00	0.48	-0.36	0.32
	8939.00	89.9100	357.2800	3097.43	-128.12	5843.07	3098.89	3813.77	94.00	3.82	2.27	-3.07
	9034.00	90.5900	357.6900	3192.34	-132.29	5842.65	3193.84	3908.77	95.00	0.84	0.72	0.43
	9128.00	89.9400	356.0400	3286.19	-137.43	5842.22	3287.76	4002.77	94.00	1.89	-0.69	-1.76
	9221.00	90.4000	357.4900	3379.04	-142.68	5841.94	3380.67	4095.76	93.00	1.64	0.49	1.56
Tie	MD ft	Incl deg	Azim deg	North ft	East ft	TVD ft	VS ft	Incr VS ft	Crs Len ft	DLS deg/100ft	Build deg/100ft	Turn deg/100ft
	9315.00	91.6900	0.4000	3473.00	-144.41	5840.23	3474.64	4189.74	94.00	3.39	1.37	3.10
	9409.00	91.5700	359.9200	3566.96	-144.15	5837.55	3568.59	4283.70	94.00	0.53	-0.13	-0.51
	9503.00	91.3200	359.2500	3660.92	-144.83	5835.18	3662.56	4377.67	94.00	0.76	-0.27	-0.71
	9597.00	91.4500	359.2200	3754.89	-146.09	5832.91	3756.53	4471.64	94.00	0.14	0.14	-0.03
	9692.00	91.4200	358.5900	3849.84	-147.90	5830.53	3851.50	4566.61	95.00	0.66	-0.03	-0.66
	9786.00	91.6000	357.9300	3943.76	-150.75	5828.05	3945.45	4660.58	94.00	0.73	0.19	-0.70
	9880.00	88.7400	0.3100	4037.74	-152.20	5827.78	4039.43	4754.56	94.00	3.96	-3.04	2.53
	9975.00	88.4300	359.6500	4132.71	-152.23	5830.12	4134.40	4849.53	95.00	0.77	-0.33	-0.69
	10070.00	90.4900	1.3600	4227.69	-151.39	5831.02	4229.36	4944.52	95.00	2.82	2.17	1.80
	10164.00	91.3200	1.0900	4321.66	-149.38	5829.53	4323.29	5038.50	94.00	0.93	0.88	-0.29
	10257.00	91.8200	0.1300	4414.61	-148.39	5826.98	4416.22	5131.47	93.00	1.16	0.54	-1.03
	10352.00	90.5500	0.7700	4509.59	-147.65	5825.02	4511.18	5226.44	95.00	1.50	-1.34	0.67
	10446.00	90.2200	0.4400	4603.58	-146.65	5824.39	4605.15	5320.44	94.00	0.50	-0.35	-0.35
	10540.00	89.8200	0.2000	4697.58	-146.13	5824.36	4699.13	5414.44	94.00	0.50	-0.43	-0.26
	10634.00	89.7200	359.8500	4791.58	-146.09	5824.73	4793.12	5508.44	94.00	0.39	-0.11	-0.37
	10728.00	89.3800	359.2200	4885.57	-146.85	5825.47	4887.12	5602.44	94.00	0.76	-0.36	-0.67
	10822.00	88.8300	359.0100	4979.55	-148.30	5826.94	4981.11	5696.43	94.00	0.63	-0.59	-0.22
	10916.00	89.6900	0.9200	5073.54	-148.36	5828.15	5075.08	5790.41	94.00	2.23	0.91	2.03
	11011.00	91.6000	1.5400	5168.50	-146.32	5827.08	5170.02	5885.40	95.00	2.11	2.01	0.65
	11103.00	91.2000	0.8400	5260.45	-144.41	5824.84	5261.93	5977.37	92.00	0.88	-0.43	-0.76
	11194.00	91.3500	0.7000	5351.42	-143.19	5822.81	5352.88	6068.35	91.00	0.23	0.16	-0.15
	11283.00	90.0900	0.4200	5440.41	-142.32	5821.69	5441.84	6157.34	89.00	1.45	-1.42	-0.31

	11374.00	90.0900	359.6400	5531.41	-142.27	5821.55	5532.83	6248.34	91.00	0.86	0.00	-0.86
	11466.00	88.7700	0.1800	5623.40	-142.42	5822.47	5624.82	6340.33	92.00	1.55	-1.43	0.59
	11558.00	88.5800	359.4000	5715.38	-142.75	5824.59	5716.79	6432.31	92.00	0.87	-0.21	-0.85
	11650.00	88.9800	358.9300	5807.35	-144.09	5826.55	5808.77	6524.29	92.00	0.67	0.43	-0.51
	11741.00	89.5700	359.2400	5898.33	-145.55	5827.70	5899.76	6615.28	91.00	0.73	0.65	0.34
	11833.00	89.7500	359.5100	5990.32	-146.55	5828.25	5991.76	6707.28	92.00	0.35	0.20	0.29
	11924.00	90.1200	1.6200	6081.31	-145.65	5828.35	6082.73	6798.27	91.00	2.35	0.41	2.32
	12016.00	91.8500	1.6700	6173.25	-143.01	5826.77	6174.63	6890.26	92.00	1.88	1.88	0.05
	12106.00	91.6300	1.0300	6263.19	-140.89	5824.04	6264.52	6980.21	90.00	0.75	-0.24	-0.71
	12198.00	91.3600	1.0900	6355.14	-139.19	5821.64	6356.45	7072.18	92.00	0.30	-0.29	0.07
	12289.00	90.7700	0.4500	6446.12	-137.97	5819.95	6447.40	7163.17	91.00	0.96	-0.65	-0.70
	12381.00	90.1800	359.9100	6538.11	-137.68	5819.18	6539.38	7255.16	92.00	0.87	-0.64	-0.59
	12473.00	90.7400	0.1100	6630.11	-137.66	5818.44	6631.37	7347.16	92.00	0.65	0.61	0.22
	12565.00	90.8000	0.2500	6722.10	-137.38	5817.21	6723.35	7439.15	92.00	0.17	0.07	0.15
	12657.00	91.1400	359.7100	6814.08	-137.41	5815.65	6815.32	7531.14	92.00	0.69	0.37	-0.59
	12748.00	91.6600	359.3100	6905.05	-138.19	5813.43	6906.30	7622.11	91.00	0.72	0.57	-0.44
	12839.00	91.4200	358.5600	6996.00	-139.88	5810.98	6997.26	7713.07	91.00	0.87	-0.26	-0.82
	12930.00	90.1800	359.9900	7086.98	-141.03	5809.71	7088.25	7804.06	91.00	2.08	-1.36	1.57
	13022.00	90.1500	0.1100	7178.98	-140.95	5809.45	7180.24	7896.06	92.00	0.13	-0.03	0.13
	13113.00	89.8800	0.1200	7269.98	-140.76	5809.42	7271.23	7987.06	91.00	0.30	-0.30	0.01
	13204.00	89.9100	359.2100	7360.98	-141.30	5809.59	7362.22	8078.06	91.00	1.00	0.03	-1.00
	13295.00	91.1100	359.5300	7451.97	-142.30	5808.78	7453.22	8169.05	91.00	1.36	1.32	0.35
	13387.00	90.7400	359.2000	7543.95	-143.32	5807.29	7545.20	8261.04	92.00	0.54	-0.40	-0.36
	13479.00	90.7100	358.9500	7635.93	-144.80	5806.13	7637.20	8353.04	92.00	0.27	-0.03	-0.27
	13570.00	90.2500	358.4900	7726.91	-146.83	5805.37	7728.19	8444.03	91.00	0.71	-0.51	-0.51
	13661.00	90.0000	358.0400	7817.86	-149.59	5805.17	7819.18	8535.03	91.00	0.57	-0.27	-0.49
	13752.00	90.5500	358.4800	7908.82	-152.35	5804.73	7910.16	8626.03	91.00	0.77	0.60	0.48
	13847.00	90.6200	358.1800	8003.78	-155.12	5803.76	8005.15	8721.02	95.00	0.32	0.07	-0.32
Tie	MD ft	Incl deg	Azim deg	North ft	East ft	TVD ft	VS ft	Incr VS ft	Crs Len ft	DLS deg/100ft	Build deg/100ft	Turn deg/100ft
	13940.00	88.1200	358.3800	8096.72	-157.91	5804.78	8098.12	8814.01	93.00	2.70	-2.69	0.22
	14035.00	87.8500	358.4200	8191.62	-160.56	5808.13	8193.05	8908.95	95.00	0.29	-0.28	0.04
	14129.00	87.8800	358.8000	8285.53	-162.84	5811.63	8286.98	9002.89	94.00	0.41	0.03	0.40
	14223.00	88.6500	0.0900	8379.48	-163.75	5814.47	8380.93	9096.84	94.00	1.60	0.82	1.37
	14318.00	89.9100	0.4000	8474.47	-163.34	5815.67	8475.91	9191.83	95.00	1.37	1.33	0.33
	14412.00	90.8000	1.2000	8568.46	-162.03	5815.08	8569.87	9285.83	94.00	1.27	0.95	0.85
	14506.00	89.7500	1.0000	8662.44	-160.23	5814.63	8663.82	9379.83	94.00	1.14	-1.12	-0.21
	14601.00	91.2900	1.7200	8757.40	-157.97	5813.77	8758.74	9474.82	95.00	1.79	1.62	0.76
	14695.00	89.3500	1.7200	8851.36	-155.15	5813.25	8852.65	9568.81	94.00	2.06	-2.06	0.00
	14790.00	88.8300	1.8800	8946.30	-152.17	5814.75	8947.54	9663.80	95.00	0.57	-0.55	0.17
	14884.00	88.4900	1.9800	9040.22	-149.00	5816.95	9041.41	9757.77	94.00	0.38	-0.36	0.11
	14978.00	88.2400	2.1100	9134.12	-145.65	5819.64	9135.26	9851.74	94.00	0.30	-0.27	0.14
	15073.00	87.9100	1.7400	9229.01	-142.46	5822.83	9230.10	9946.68	95.00	0.52	-0.35	-0.39
	15166.00	89.3800	0.9500	9321.96	-140.28	5825.03	9323.00	10039.65	93.00	1.79	1.58	-0.85
	15261.00	89.0800	359.9400	9416.94	-139.54	5826.30	9417.97	10134.64	95.00	1.11	-0.32	-1.06
	15355.00	90.4900	0.4400	9510.94	-139.23	5826.65	9511.95	10228.64	94.00	1.59	1.50	0.53
	15449.00	90.7400	359.1900	9604.93	-139.53	5825.65	9605.94	10322.63	94.00	1.36	0.27	-1.33
	15543.00	90.7100	358.9200	9698.91	-141.08	5824.46	9699.93	10416.62	94.00	0.29	-0.03	-0.29
	15638.00	90.7700	357.9100	9793.87	-143.71	5823.23	9794.92	10511.62	95.00	1.06	0.06	-1.06
	15732.00	90.0900	357.0500	9887.77	-147.84	5822.52	9888.87	10605.61	94.00	1.17	-0.72	-0.91
	15827.00	88.9200	355.5200	9982.56	-154.00	5823.34	9983.74	10700.60	95.00	2.03	-1.23	-1.61
	15921.00	87.7200	354.4200	10076.16	-162.24	5826.10	10077.43	10794.56	94.00	1.73	-1.28	-1.17
	15992.00	87.6000	353.4800	10146.70	-169.71	5829.00	10148.07	10865.50	71.00	1.33	-0.17	-1.32
Projection to TD:	16040.00	87.6000	353.4800	10194.35	-175.16	5831.01	10195.79	10913.46	48.00	0.00	0.00	0.00

