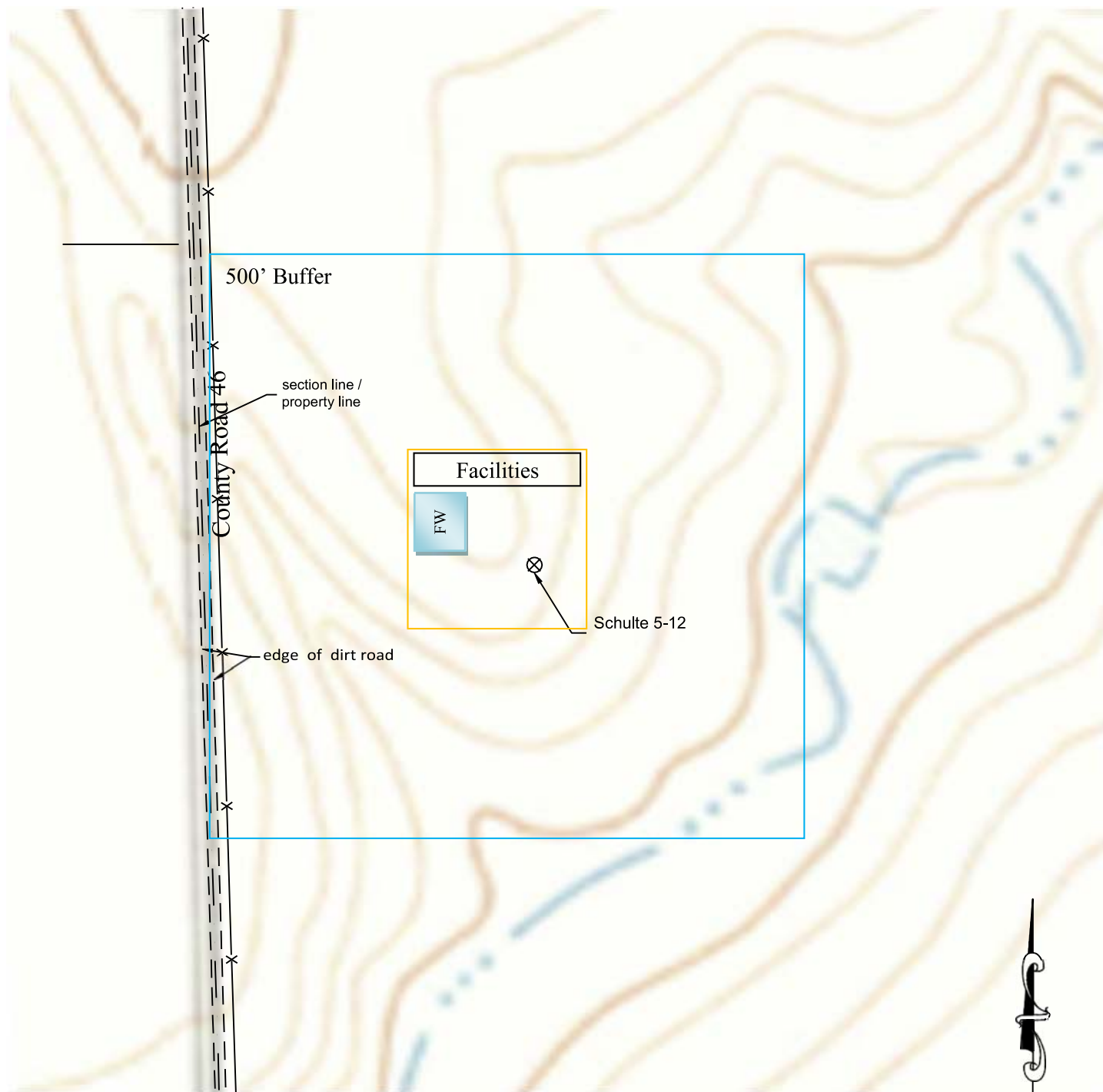
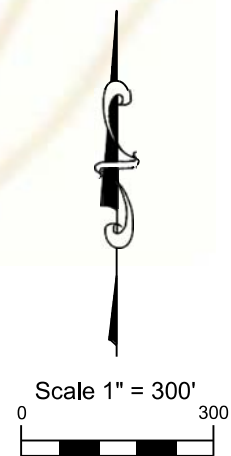


Location Drawing



County road 500 feet at 270°
Stock pond 460' at 90°



Z:\PLS Group\Project\2016\16025\dwg\16025.dwg April 16, 2016 - 5:13pm

Well Name:

Schulte 5-12

Field Date
3/22/2016

Party Chief
DCB

Proj. Manager
MBS

Drawing Date
4/16/2016

Prepared for:

Project#: 16025.001

Grynberg Petroleum Company

PLS Group, LLC
6843 North Franklin Avenue
Loveland, Colorado 80538
970.669.2100 office - 970.669.3652 fax

Section 3-T6S-R52W-6th PM, NW-SW

Lincoln County, Colorado