



Kerr-McGee Oil & Gas Onshore LP

A subsidiary of Anadarko Petroleum Corporation

1099 18th Street
Denver, CO 80202
720-929-6000

November 22, 2016

Matt Lepore
Director, Colorado Oil and Gas Conservation Commission
Department of Natural Resources
The Chancery Building
1120 Lincoln Street, Suite 801
Denver, CO 80203

Re: **30 Day Certification Letter - 318A.e**
CHICA 31C-23HZ (Doc No. 401154148)
Township 3 North, Range 67 West
Section 35: NWNW
Unit Acreage: 720 acres
Unit Spacing: 03N67W SEC 22: E2E2
03N67W SEC 23: W2W2
03N67W SEC 26: W2W2
03N67W SEC 27: E2E2
03N67W SEC 34: NENE
03N67W SEC 35: NWNW
Weld County, Colorado

Dear Director Lepore:

Kerr McGee Oil and Gas Onshore LP ("KMG") hereby certifies that KMG owns one hundred percent (100%) of the leasehold interest in the mineral rights in the proposed spacing unit. KMG hereby respectfully requests approval of this boundary well.

If you have any questions or issues regarding this permit, please contact our office.

Sincerely,

Kerr-McGee Oil and Gas Onshore LP

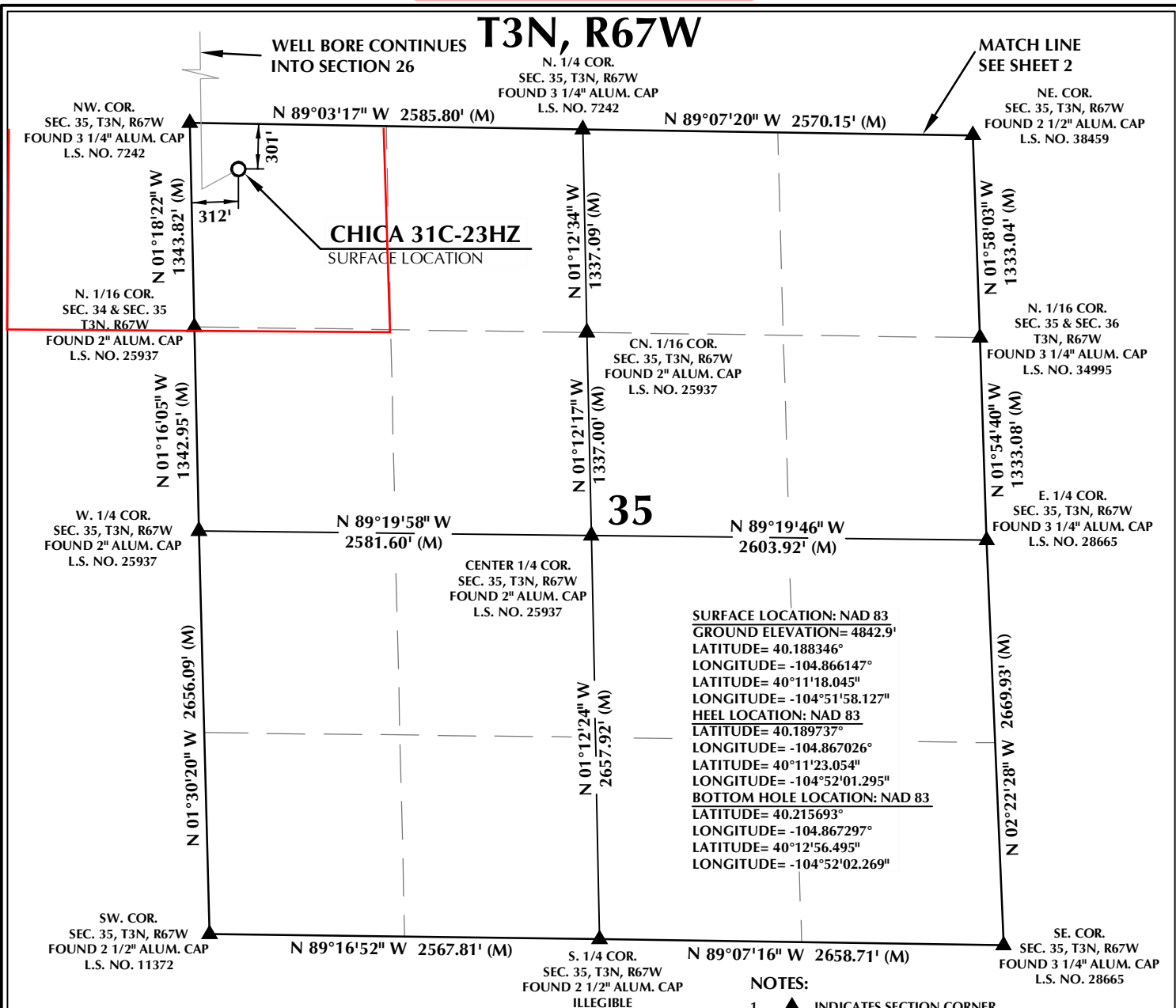
A handwritten signature in black ink that reads "Shayelyn Marshall".

Shayelyn Marshall
Regulatory Analyst

Enclosure

PROPOSED SPACING UNIT

T3N, R67W

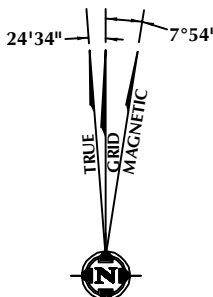


CERTIFICATE OF SURVEYOR:

THIS IS TO CERTIFY THAT THE ABOVE PLAT WAS PREPARED FROM FIELD NOTES OF ACTUAL SURVEY MADE BY ME OR UNDER MY SUPERVISION AND THAT THE SAME ARE TRUE AND CORRECT TO THE BEST OF MY KNOWLEDGE AND BELIEF. THIS CERTIFICATE DOES NOT REPRESENT A LAND SURVEY PLAT OR IMPROVEMENT SURVEY PLAT AS DEFINED BY C.R.S. 38-51-1-2 AND CANNOT BE RELIED UPON TO DETERMINE OWNERSHIP.

Randall K. French
 RANDALL K. FRENCH
 PROFESSIONAL LAND SURVEYOR
 COLORADO REGISTRATION NUMBER 18512

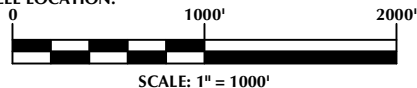
NOTICE:
 ACCORDING TO COLORADO STATE LAW YOU MUST COMMENCE ANY LEGAL ACTION BASED UPON ANY DEFECT IN THIS SURVEY WITHIN THREE YEARS AFTER YOU FIRST DISCOVER SUCH DEFECT. IN NO EVENT MAY ANY ACTION BASED UPON ANY DEFECT IN THIS SURVEY BE COMMENCED MORE THAN TEN YEARS FROM THE DATE ON THE CERTIFICATION SHOWN HEREON.



NOTE:
 MAGNETIC NORTH IS CURRENT AS OF 10/3/2016.
 MAGNETIC NORTH CHANGES WEST 0°06' PER YEAR.

NOTES:

- ▲ INDICATES SECTION CORNER
- INDICATES CALCULATED CORNER
- ELEVATION BASED ON NAVD88 (GEOID12B)
- BASIS OF BEARING DERIVED FROM COLORADO COORDINATE SYSTEM OF 1983 NORTH ZONE.
- ALL MEASURED DISTANCES ARE GRID.
 COMBINED SCALE FACTOR: .99973037 CALCULATED FROM THE N. 1/4 CORNER OF SECTION 35, T3N, R67W
- OPERATOR: ROB WILSON / PDOP = 1.6
- SEE ADDENDUM TO WELL LOCATION CERTIFICATE FOR EXISTING IMPROVEMENTS WITHIN 500' OF THE WELL PAD.
- WELL FOOTAGES ARE MEASURED AT RIGHT ANGLES TO THE SECTION LINES.
- THE BOTTOM OF HOLE BEARS N00°52'01"W, 9456' FROM THE HEEL LOCATION.



WELL PAD - CHICA 4N2-23HZ

CHICA 31C-23HZ
 WELL LOCATION CERTIFICATE
 301' FNL & 312' FWL NWNW (SURFACE)
 LOCATED IN SECTION 35
 200' FSL & 73' FWL SWSW (HEEL)
 LOCATED IN SECTION 26
 912' FNL & 58' FWL NWNW (BOTTOM)
 LOCATED IN SECTION 23
 T3N, R67W, 6TH P.M.
 WELD COUNTY, COLORADO

**Kerr-McGee Oil &
 Gas Onshore L.P.**
 1099 18th Street
 Denver, Colorado 80202



CONSULTING, LLC

SHERIDAN OFFICE
 1095 Saberton Avenue
 Sheridan, Wyoming 82801
 Phone 307-674-0609

LOVELAND OFFICE
 1635 Foxtrail Drive, Suite 204
 Loveland, Colorado 80538
 Phone 970-776-4331

DRAFTED BY: LMO	CHECKED BY: RKF	SHEET NO: 1
DATE DRAFTED: 10/26/16	DATE SURVEYED: 10/3/16	1 OF 3
REVISED:	FILE NAME: 15-38	

PROPOSED SPACING UNIT

T3N, R67W

N. 1/4 COR.
SEC. 26, T3N, R67W
FOUND 3 1/4" ALUM. CAP
L.S. NO. 13155

MATCH LINE
SEE SHEET 3

NW. COR.
SEC. 26, T3N, R67W
FOUND 3 1/4" ALUM. CAP
L.S. NO. 13155

NE. COR.
SEC. 26, T3N, R67W
FOUND 2 1/2" ALUM. CAP
ILLEGIBLE

SURFACE LOCATION: NAD 83
GROUND ELEVATION= 4842.9'
LATITUDE= 40.188346°
LONGITUDE= -104.866147°
LATITUDE= 40°11'18.045"
LONGITUDE= -104°51'58.127"
HEEL LOCATION: NAD 83
LATITUDE= 40.189737°
LONGITUDE= -104.867026°
LATITUDE= 40°11'23.054"
LONGITUDE= -104°52'01.295"
BOTTOM HOLE LOCATION: NAD 83
LATITUDE= 40.215693°
LONGITUDE= -104.867297°
LATITUDE= 40°12'56.495"
LONGITUDE= -104°52'02.269"

26

CENTER 1/4 COR.
SEC. 26, T3N, R67W,
FOUND 2 1/2" ALUM. CAP
WITNESS CORNER
30' W. OF CORNER
POSITION
L.S. NO. 38345

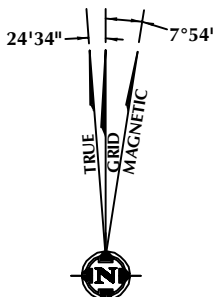
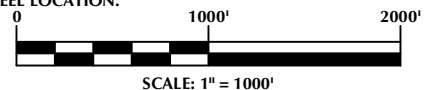
E. 1/4 COR.
SEC. 26, T3N, R67W
FOUND 2 1/2" ALUM. CAP
WITNESS CORNER
140' W. OF CORNER
POSITION
L.S. NO. 38345

SE. COR.
SEC. 26, T3N, R67W
FOUND 2 1/2" ALUM. CAP
L.S. NO. 38459

S. 1/4 COR.
SEC. 26, T3N, R67W
FOUND 3 1/4" ALUM. CAP
L.S. NO. 7242

NOTES:

- ▲ INDICATES SECTION CORNER
- INDICATES CALCULATED CORNER
- ELEVATION BASED ON NAVD88 (GEOID12B)
- BASIS OF BEARING DERIVED FROM COLORADO COORDINATE SYSTEM OF 1983 NORTH ZONE.
- ALL MEASURED DISTANCES ARE GRID.
COMBINED SCALE FACTOR: .99973037 CALCULATED FROM THE N. 1/4 CORNER OF SECTION 35, T3N, R67W
- OPERATOR: ROB WILSON / PDOP = 1.6
- SEE ADDENDUM TO WELL LOCATION CERTIFICATE FOR EXISTING IMPROVEMENTS WITHIN 500' OF THE WELL PAD.
- WELL FOOTAGES ARE MEASURED AT RIGHT ANGLES TO THE SECTION LINES.
- THE BOTTOM OF HOLE BEARS N00°52'01"W, 9456' FROM THE HEEL LOCATION.



NOTE:
MAGNETIC NORTH IS CURRENT AS OF 10/3/2016.
MAGNETIC NORTH CHANGES WEST 0°06' PER YEAR.

CERTIFICATE OF SURVEYOR:

THIS IS TO CERTIFY THAT THE ABOVE PLAT WAS PREPARED FROM FIELD NOTES OF ACTUAL SURVEY MADE BY ME OR UNDER MY SUPERVISION AND THAT THESE ARE TRUE AND CORRECT TO THE BEST OF MY KNOWLEDGE AND BELIEF. THIS CERTIFICATE DOES NOT REPRESENT A LAND SURVEY PLAT OR IMPROVEMENT SURVEY PLAT AS DEFINED BY C.R.S. 38-51-102 AND CANNOT BE RELIED UPON TO DETERMINE OWNERSHIP.

Randall K. French
RANDALL K. FRENCH
PROFESSIONAL LAND SURVEYOR
COLORADO REGISTRATION NUMBER 18512

NOTICE:
ACCORDING TO COLORADO STATE LAW YOU MUST COMMENCE ANY LEGAL ACTION BASED UPON ANY DEFECT IN THIS SURVEY WITHIN THREE YEARS AFTER YOU FIRST DISCOVER SUCH DEFECT. IN NO EVENT MAY ANY ACTION BASED UPON ANY DEFECT IN THIS SURVEY BE COMMENCED MORE THAN TEN YEARS FROM THE DATE ON THE CERTIFICATION SHOWN HEREON.

WELL PAD - CHICA 4N2-23HZ

CHICA 31C-23HZ
WELL LOCATION CERTIFICATE
301' FNL & 312' FWL NWNW (SURFACE)
LOCATED IN SECTION 35
200' FSL & 73' FWL SWSW (HEEL)
LOCATED IN SECTION 26
912' FNL & 58' FWL NWNW (BOTTOM)
LOCATED IN SECTION 23
T3N, R67W, 6TH P.M.
WELD COUNTY, COLORADO

**Kerr-McGee Oil &
Gas Onshore L.P.**
1099 18th Street
Denver, Colorado 80202



CONSULTING, LLC

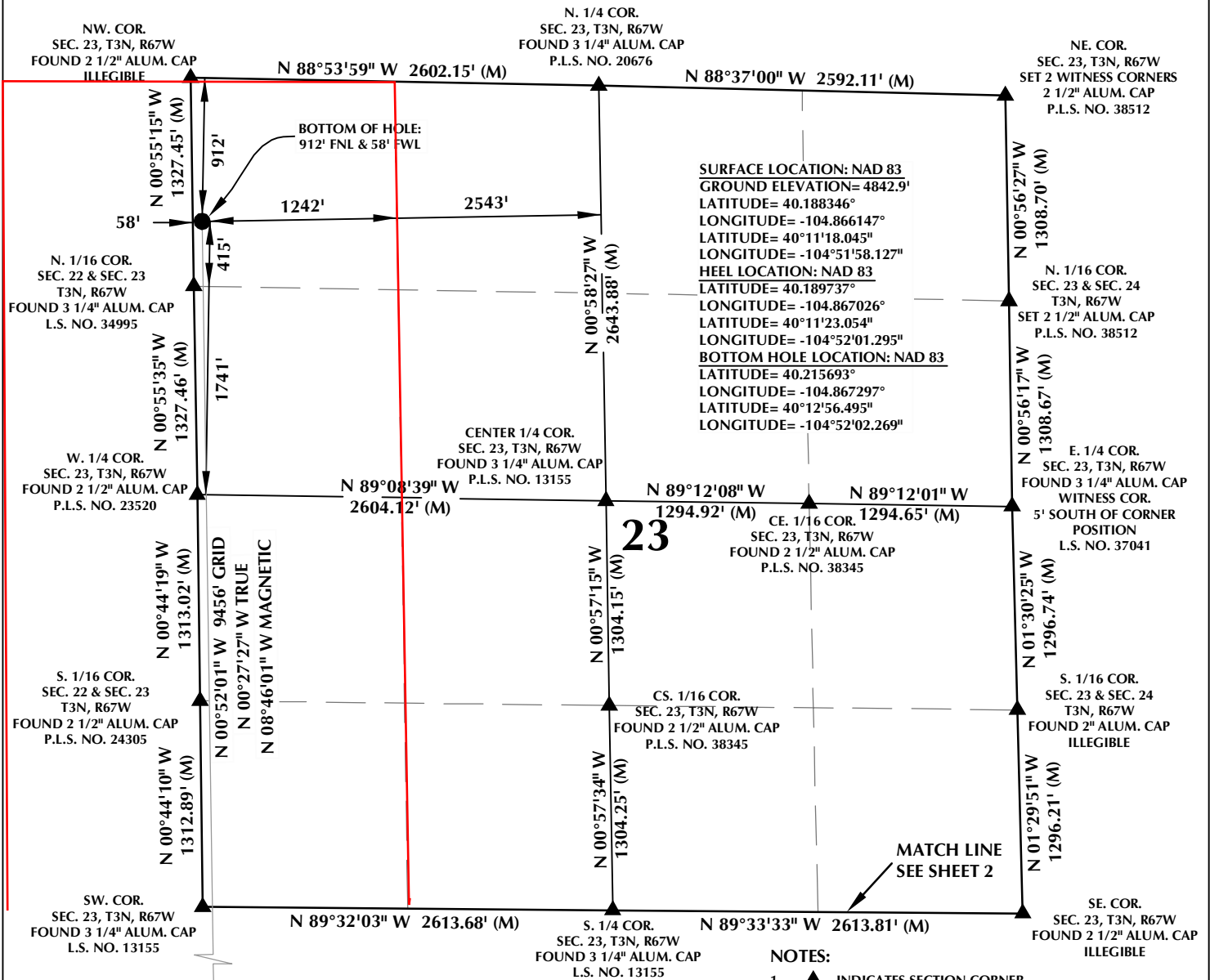
SHERIDAN OFFICE
1095 Saberton Avenue
Sheridan, Wyoming 82801
Phone 307-674-0609

LOVELAND OFFICE
1635 Foxtrail Drive, Suite 204
Loveland, Colorado 80538
Phone 970-776-4331

DRAFTED BY:	LMO	CHECKED BY:	RKF	SHEET NO:
DATE DRAFTED:	10/26/16	DATE SURVEYED:	10/3/16	2
REVISED:		FILE NAME:	15-38	2 OF 3

PROPOSED SPACING UNIT

T3N, R67W



CERTIFICATE OF SURVEYOR:

THIS IS TO CERTIFY THAT THE ABOVE PLAT WAS PREPARED FROM FIELD NOTES OF ACTUAL SURVEY MADE BY ME OR UNDER MY SUPERVISION AND THAT THESE ARE TRUE AND CORRECT TO THE BEST OF MY KNOWLEDGE AND BELIEF. THIS CERTIFICATE DOES NOT REPRESENT A LAND SURVEY PLAT OR IMPROVEMENT SURVEY PLAT AS DEFINED BY C.R.S. 38-51-102 AND CANNOT BE RELIED UPON TO DETERMINE OWNERSHIP.

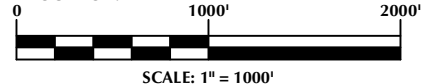
Randall K. French
 RANDALL K. FRENCH
 PROFESSIONAL LAND SURVEYOR
 COLORADO REGISTRATION NUMBER 18512
 10/26/16

NOTICE:
 ACCORDING TO COLORADO STATE LAW YOU MUST COMMENCE ANY LEGAL ACTION BASED UPON ANY DEFECT IN THIS SURVEY WITHIN THREE YEARS AFTER YOU FIRST DISCOVER SUCH DEFECT. IN NO EVENT MAY ANY ACTION BASED UPON ANY DEFECT IN THIS SURVEY BE COMMENCED MORE THAN TEN YEARS FROM THE DATE ON THE CERTIFICATION SHOWN HEREON.

NOTE:
 MAGNETIC NORTH IS CURRENT AS OF 10/3/2016.
 MAGNETIC NORTH CHANGES WEST 0°06' PER YEAR.

NOTES:

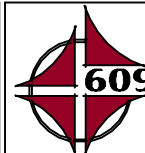
- ▲ INDICATES SECTION CORNER
- INDICATES CALCULATED CORNER
- ELEVATION BASED ON NAVD88 (GEOID12B)
- BASIS OF BEARING DERIVED FROM COLORADO COORDINATE SYSTEM OF 1983 NORTH ZONE.
- ALL MEASURED DISTANCES ARE GRID.
 COMBINED SCALE FACTOR: .99973037 CALCULATED FROM THE N. 1/4 CORNER OF SECTION 35, T3N, R67W
- OPERATOR: ROB WILSON / PDOP = 1.6
- SEE ADDENDUM TO WELL LOCATION CERTIFICATE FOR EXISTING IMPROVEMENTS WITHIN 500' OF THE WELL PAD.
- WELL FOOTAGES ARE MEASURED AT RIGHT ANGLES TO THE SECTION LINES.
- THE BOTTOM OF HOLE BEARS N00°52'01"W, 9456' FROM THE HEEL LOCATION.



WELL PAD - CHICA 4N2-23HZ

CHICA 31C-23HZ
 WELL LOCATION CERTIFICATE
 301' FNL & 312' FWL NWNW (SURFACE)
 LOCATED IN SECTION 35
 200' FSL & 73' FWL SWSW (HEEL)
 LOCATED IN SECTION 26
 912' FNL & 58' FWL NWNW (BOTTOM)
 LOCATED IN SECTION 23
 T3N, R67W, 6TH P.M.
 WELD COUNTY, COLORADO

**Kerr-McGee Oil &
 Gas Onshore L.P.**
 1099 18th Street
 Denver, Colorado 80202



CONSULTING, LLC

SHERIDAN OFFICE
 1095 Saberton Avenue
 Sheridan, Wyoming 82801
 Phone 307-674-0609

LOVELAND OFFICE
 1635 Foxtrail Drive, Suite 204
 Loveland, Colorado 80538
 Phone 970-776-4331

DRAFTED BY:	LMO	CHECKED BY:	RKF	SHEET NO:
DATE DRAFTED:	10/26/16	DATE SURVEYED:	10/3/16	3
REVISED:		FILE NAME:	15-38	3 OF 3