



Kerr-McGee Oil & Gas Onshore LP

A subsidiary of Anadarko Petroleum Corporation

1099 18th Street
Denver, CO 80202
720-929-6000

December 2, 2016

Matt Lepore
Director, Colorado Oil and Gas Conservation Commission
Department of Natural Resources
The Chancery Building
1120 Lincoln Street, Suite 801
Denver, CO 80203

Re: **30 Day Certification Letter - 318A.e**
CAMENISCH 10N-34HZ (Doc No. 401140352)
Township 2 North, Range 68 West
Section 15: SWNE
Unit Acreage: 480 acres
Unit Spacing: 3N-68W-Sec 34: W/2SE/4
2N-68W-Sec 3: W/2E/2
2N-68W-Sec 10: W/2E/2
2N-68W-Sec 15: W/2NE/4
Weld County, Colorado

Dear Director Lepore:

Kerr-McGee Oil and Gas Onshore LP ("KMG") hereby certifies that a thirty (30) day notice has been given by certified mail to all mineral owners in the proposed wellbore spacing unit. We have not received any objections to such well location, proposed spacing unit, or additional producing formation. KMG hereby respectfully requests approval of this boundary well.

If you have any questions or issues regarding this permit, please contact Cheryl Light at (720) 929-6461.

Very truly yours,

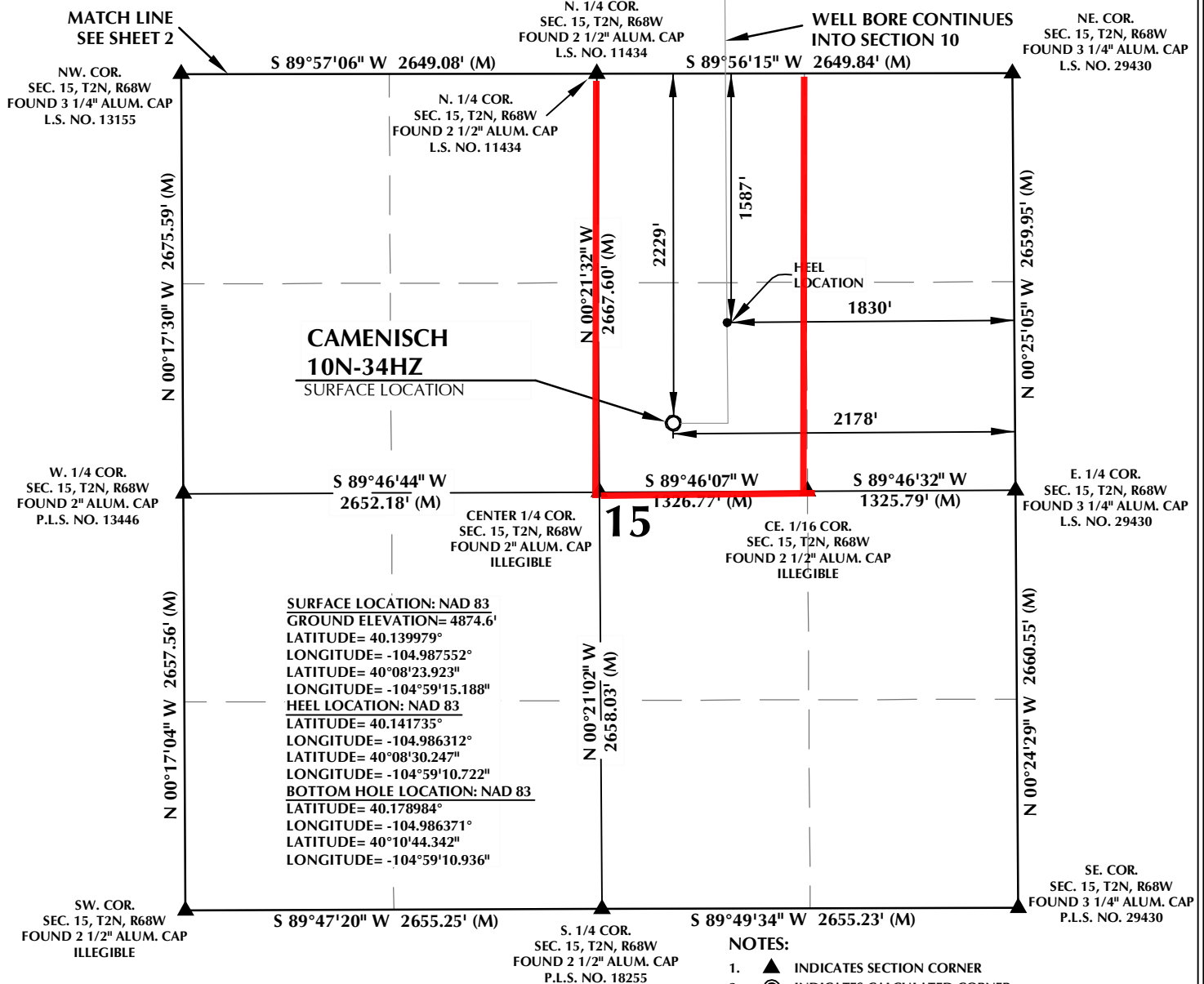
KERR-McGEE OIL AND GAS ONSHORE LP

A handwritten signature in blue ink that reads 'Cheryl Light'.

Cheryl Light
Senior Regulatory Analyst

PROPOSED SPACING UNIT

T2N, R68W

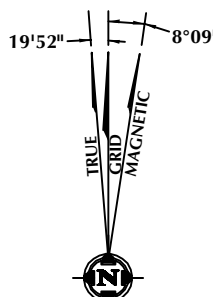


CERTIFICATE OF SURVEYOR:

THIS IS TO CERTIFY THAT THE ABOVE PLAT WAS PREPARED FROM FIELD NOTES OF ACTUAL SURVEY MADE BY ME OR UNDER MY SUPERVISION AND THAT THE SAME ARE TRUE AND CORRECT TO THE BEST OF MY KNOWLEDGE AND BELIEF. THIS CERTIFICATE DOES NOT REPRESENT A LAND SURVEY PLAT OR IMPROVEMENT SURVEY PLAT AS DEFINED BY C.R.S. 38-51-102 AND CANNOT BE RELIED UPON TO DETERMINE OWNERSHIP.

Randall K. French
RANDALL K. FRENCH
PROFESSIONAL LAND SURVEYOR
COLORADO REGISTRATION NUMBER 18512

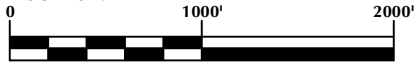
NOTICE:
ACCORDING TO COLORADO STATE LAW YOU MUST COMMENCE ANY LEGAL ACTION BASED UPON ANY DEFECT IN THIS SURVEY WITHIN THREE YEARS AFTER YOU FIRST DISCOVER SUCH DEFECT. IN NO EVENT MAY ANY ACTION BASED UPON ANY DEFECT IN THIS SURVEY BE COMMENCED MORE THAN TEN YEARS FROM THE DATE ON THE CERTIFICATION SHOWN HEREON.



NOTE:
MAGNETIC NORTH IS CURRENT AS OF 9/10/2015.
MAGNETIC NORTH CHANGES WEST 0°06' PER YEAR.

NOTES:

- ▲ INDICATES SECTION CORNER
- INDICATES CALCULATED CORNER
- ELEVATION BASED ON NAVD88 (GEOID09)
- BASIS OF BEARING DERIVED FROM COLORADO COORDINATE SYSTEM OF 1983 NORTH ZONE.
- ALL MEASURED DISTANCES ARE GRID.
COMBINED SCALE FACTOR: .99972911 CALCULATED FROM THE S. 1/4 CORNER OF SECTION 10, T2N, R68W
- OPERATOR: ROB WILSON / PDOP = 1.6
- SEE ADDENDUM TO WELL LOCATION CERTIFICATE FOR EXISTING IMPROVEMENTS WITHIN 500' OF THE WELL PAD.
- WELL FOOTAGES ARE MEASURED AT RIGHT ANGLES TO THE SECTION LINES.
- THE BOTTOM OF HOLE BEARS N00°24'06"W, 13569' FROM THE HEEL LOCATION.



WELL PAD - CAMENISCH 36N-22HZ

CAMENISCH 10N-34HZ
WELL LOCATION CERTIFICATE
2229' FNL & 2178' FEL SWNE (SURFACE)
1587' FNL & 1830' FEL SWNE (HEEL)
LOCATED IN SECTION 15
T2N, R68W, 6TH P.M.
1467' FSL & 1913' FEL NWSE (BOTTOM)
LOCATED IN SECTION 34
T3N, R68W, 6TH P.M.
WELD COUNTY, COLORADO

**Kerr-McGee Oil &
Gas Onshore L.P.**
1099 18th Street
Denver, Colorado 80202



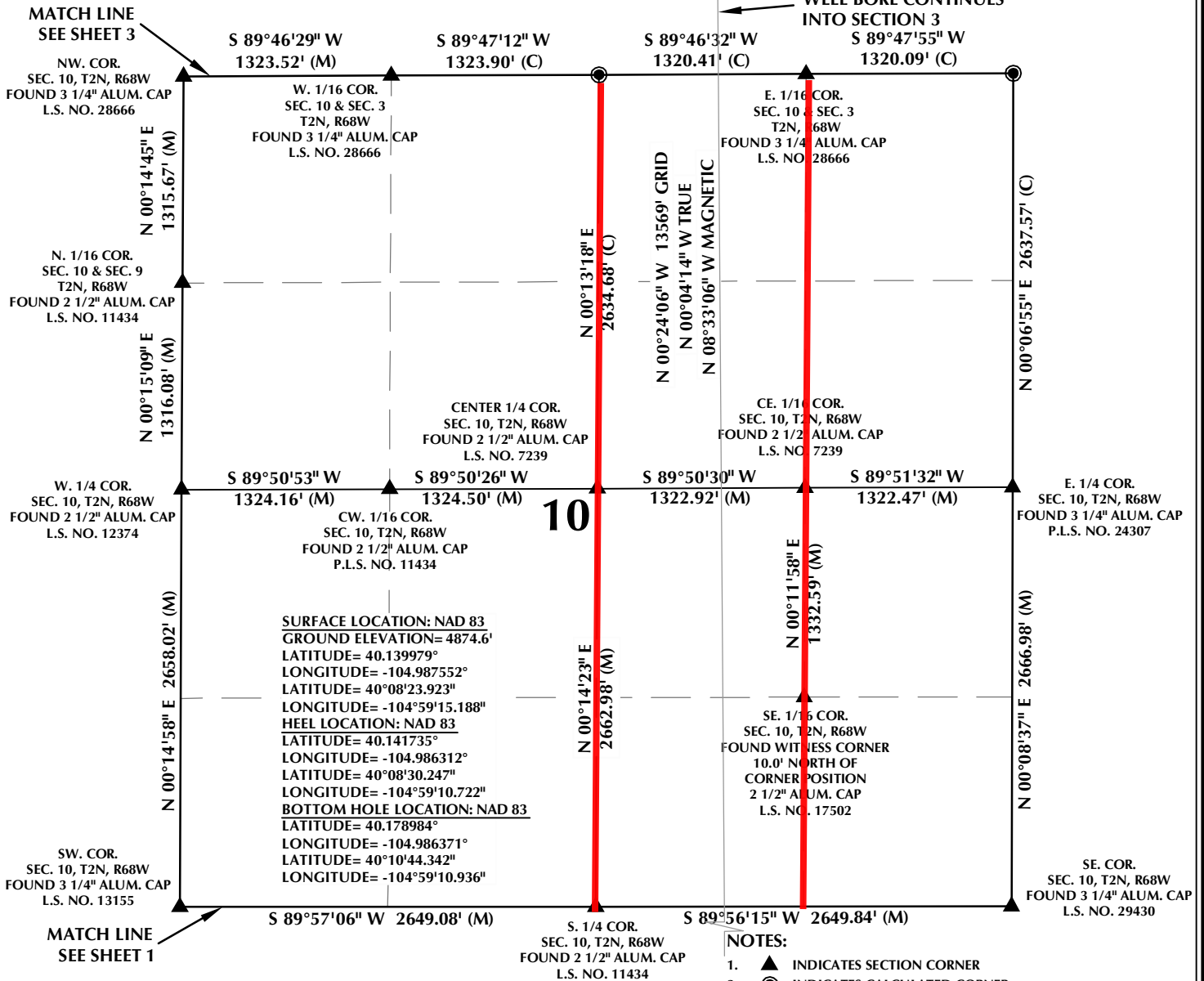
CONSULTING, LLC

SHERIDAN OFFICE
1095 Saberton Avenue
Sheridan, Wyoming 82801
Phone 307-674-0609

LOVELAND OFFICE
1635 Foxtrail Drive, Suite 204
Loveland, Colorado 80538
Phone 970-776-4331

DRAFTED BY:	LMO	CHECKED BY:	RKF	SHEET NO:
DATE DRAFTED:	9/28/15	DATE SURVEYED:	7/15/15	1
REVISED:	10/17/16	FILE NAME:	15-23	1 OF 4

T2N, R68W



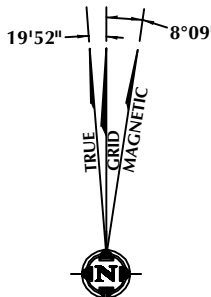
CERTIFICATE OF SURVEYOR:

THIS IS TO CERTIFY THAT THE ABOVE PLAT WAS PREPARED FROM FIELD NOTES OF ACTUAL SURVEY MADE BY ME OR UNDER MY SUPERVISION AND THAT THE SAME ARE TRUE AND CORRECT TO THE BEST OF MY KNOWLEDGE AND BELIEF. THIS CERTIFICATE DOES NOT REPRESENT A LAND SURVEY PLAT OR IMPROVEMENT SURVEY PLAT AS DEFINED BY C.R.S. 38-51-302 AND CANNOT BE RELIED UPON TO DETERMINE OWNERSHIP.

Randall K. French
 RANDALL K. FRENCH
 PROFESSIONAL LAND SURVEYOR
 COLORADO REGISTRATION NUMBER 18512

10/17/16

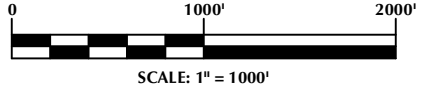
NOTICE:
 ACCORDING TO COLORADO STATE LAW YOU MUST COMMENCE ANY LEGAL ACTION BASED UPON ANY DEFECT IN THIS SURVEY WITHIN THREE YEARS AFTER YOU FIRST DISCOVER SUCH DEFECT. IN NO EVENT MAY ANY ACTION BASED UPON ANY DEFECT IN THIS SURVEY BE COMMENCED MORE THAN TEN YEARS FROM THE DATE ON THE CERTIFICATION SHOWN HEREON.



NOTE:
 MAGNETIC NORTH IS CURRENT AS OF 9/10/2015.
 MAGNETIC NORTH CHANGES WEST 0°06' PER YEAR.

NOTES:

- ▲ INDICATES SECTION CORNER
- INDICATES CALCULATED CORNER
- ELEVATION BASED ON NAVD88 (GEOID09)
- BASIS OF BEARING DERIVED FROM COLORADO COORDINATE SYSTEM OF 1983 NORTH ZONE.
- ALL MEASURED DISTANCES ARE GRID. COMBINED SCALE FACTOR: .99972911 CALCULATED FROM THE S. 1/4 CORNER OF SECTION 10, T2N, R68W
- OPERATOR: ROB WILSON / PDOP = 1.6
- SEE ADDENDUM TO WELL LOCATION CERTIFICATE FOR EXISTING IMPROVEMENTS WITHIN 500' OF THE WELL PAD.
- WELL FOOTAGES ARE MEASURED AT RIGHT ANGLES TO THE SECTION LINES.
- THE BOTTOM OF HOLE BEARS N00°24'06"W, 13569' FROM THE HEEL LOCATION.



WELL PAD - CAMENISCH 36N-22HZ

CAMENISCH 10N-34HZ
 WELL LOCATION CERTIFICATE
 2229' FNL & 2178' FEL SWNE (SURFACE)
 1587' FNL & 1830' FEL SWNE (HEEL)
 LOCATED IN SECTION 15
 T2N, R68W, 6TH P.M.
 1467' FSL & 1913' FEL NWSE (BOTTOM)
 LOCATED IN SECTION 34
 T3N, R68W, 6TH P.M.
 WELD COUNTY, COLORADO

**Kerr-McGee Oil &
 Gas Onshore L.P.**
 1099 18th Street
 Denver, Colorado 80202



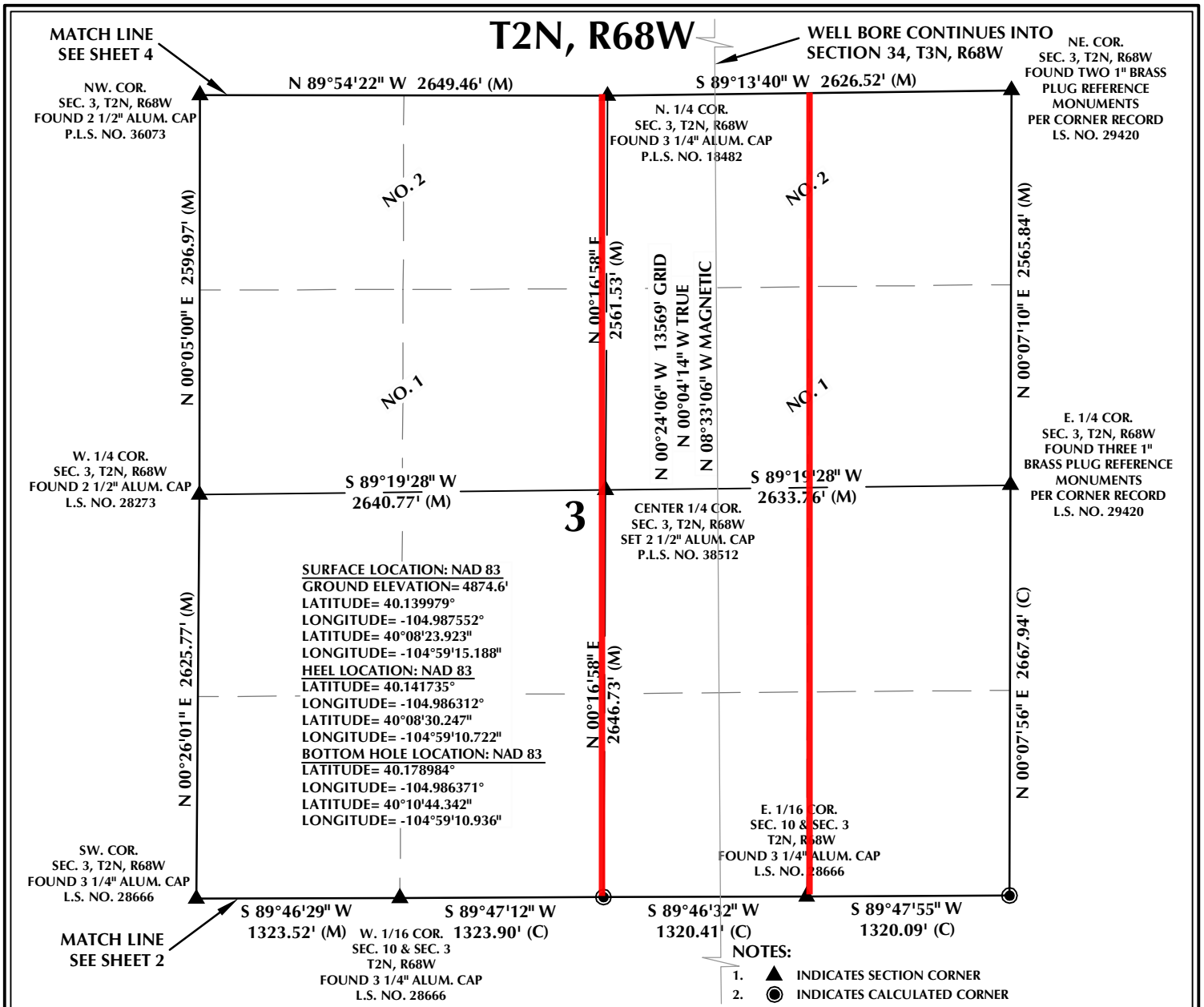
CONSULTING, LLC

SHERIDAN OFFICE
 1095 Saberton Avenue
 Sheridan, Wyoming 82801
 Phone 307-674-0609

LOVELAND OFFICE
 1635 Foxtrail Drive, Suite 204
 Loveland, Colorado 80538
 Phone 970-776-4331

DRAFTED BY:	LMO	CHECKED BY:	RKF	SHEET NO:
DATE DRAFTED:	9/28/15	DATE SURVEYED:	7/15/15	2
REVISED:	10/17/16	FILE NAME:	15-23	2 OF 4

PROPOSED SPACING UNIT

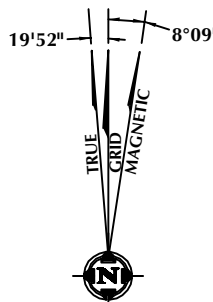


CERTIFICATE OF SURVEYOR:

THIS IS TO CERTIFY THAT THE ABOVE PLAT WAS PREPARED FROM FIELD NOTES OF ACTUAL SURVEY MADE BY ME OR UNDER MY SUPERVISION AND THAT THE SAME ARE TRUE AND CORRECT TO THE BEST OF MY KNOWLEDGE AND BELIEF. THIS CERTIFICATE DOES NOT REPRESENT A LAND SURVEY PLAT OR IMPROVEMENT SURVEY PLAT AS DEFINED BY C.R.S. 38-51-102 AND CANNOT BE RELIED UPON TO DETERMINE OWNERSHIP.

Randall K. French
RANDALL K. FRENCH
PROFESSIONAL LAND SURVEYOR
COLORADO REGISTRATION NUMBER 18512
10/17/16

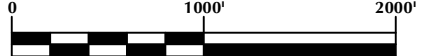
NOTICE:
ACCORDING TO COLORADO STATE LAW YOU MUST COMMENCE ANY LEGAL ACTION BASED UPON ANY DEFECT IN THIS SURVEY WITHIN THREE YEARS AFTER YOU FIRST DISCOVER SUCH DEFECT. IN NO EVENT MAY ANY ACTION BASED UPON ANY DEFECT IN THIS SURVEY BE COMMENCED MORE THAN TEN YEARS FROM THE DATE ON THE CERTIFICATION SHOWN HEREON.



NOTE:
MAGNETIC NORTH IS CURRENT AS OF 9/10/2015.
MAGNETIC NORTH CHANGES WEST 0°06' PER YEAR.

NOTES:

1. ▲ INDICATES SECTION CORNER
2. ● INDICATES CALCULATED CORNER
3. ELEVATION BASED ON NAVD88 (GEOID09)
4. BASIS OF BEARING DERIVED FROM COLORADO COORDINATE SYSTEM OF 1983 NORTH ZONE.
5. ALL MEASURED DISTANCES ARE GRID.
6. COMBINED SCALE FACTOR: .99972911 CALCULATED FROM THE S. 1/4 CORNER OF SECTION 10, T2N, R68W
7. OPERATOR: ROB WILSON / PDOP = 1.6
8. SEE ADDENDUM TO WELL LOCATION CERTIFICATE FOR EXISTING IMPROVEMENTS WITHIN 500' OF THE WELL PAD.
9. WELL FOOTAGES ARE MEASURED AT RIGHT ANGLES TO THE SECTION LINES.
10. THE BOTTOM OF HOLE BEARS N00°24'06"W, 13569' FROM THE HEEL LOCATION.
11. NO. 1 & NO. 2 AS SHOWN HEREON ARE GOVERNMENT LOTS 1 & 2 PER THE ORIGINAL GLO SURVEY



WELL PAD - CAMENISCH 36N-22HZ

CAMENISCH 10N-34HZ
WELL LOCATION CERTIFICATE
2229' FNL & 2178' FEL SWNE (SURFACE)
1587' FNL & 1830' FEL SWNE (HEEL)
LOCATED IN SECTION 15
T2N, R68W, 6TH P.M.
1467' FSL & 1913' FEL NWSE (BOTTOM)
LOCATED IN SECTION 34
T3N, R68W, 6TH P.M.
WELD COUNTY, COLORADO

**Kerr-McGee Oil &
Gas Onshore L.P.**
1099 18th Street
Denver, Colorado 80202



CONSULTING, LLC

SHERIDAN OFFICE
1095 Saberton Avenue
Sheridan, Wyoming 82801
Phone 307-674-0609

LOVELAND OFFICE
1635 Foxtrail Drive, Suite 204
Loveland, Colorado 80538
Phone 970-776-4331

DRAFTED BY:	LMO	CHECKED BY:	RKF	SHEET NO:
DATE DRAFTED:	9/28/15	DATE SURVEYED:	7/15/15	3
REVISED:	10/17/16	FILE NAME:	15-23	3 OF 4

T3N, R68W

NW. COR.
SEC. 34, T3N, R68W
FOUND 2 1/2" ALUM. CAP
P.L.S. NO. 34591

S 89°07'13" W 2565.53' (M)

S 89°07'15" W 2656.24' (M)

NE. COR.
SEC. 34, T3N, R68W
FOUND 3 1/4" ALUM. CAP
P.L.S. NO. 29420

N. 1/4 COR.
SEC. 34, T3N, R68W
FOUND 2 1/2" ALUM. CAP
L.S. NO. 38459

SURFACE LOCATION: NAD 83
GROUND ELEVATION= 4874.6'
LATITUDE= 40.139979°
LONGITUDE= -104.987552°
LATITUDE= 40°08'23.923"
LONGITUDE= -104°59'15.188"
HEEL LOCATION: NAD 83
LATITUDE= 40.141735°
LONGITUDE= -104.986312°
LATITUDE= 40°08'30.247"
LONGITUDE= -104°59'10.722"
BOTTOM HOLE LOCATION: NAD 83
LATITUDE= 40.178984°
LONGITUDE= -104.986371°
LATITUDE= 40°10'44.342"
LONGITUDE= -104°59'10.936"

CENTER 1/4 COR.
SEC. 34, T3N, R68W
FOUND 2 1/2" ALUM. CAP
P.L.S. NO. 7735

34

W. 1/4 COR.
SEC. 34, T3N, R68W
FOUND 3 1/4" ALUM. CAP
P.L.S. NO. 34591

S 89°07'26" W
2573.32' (M)

S 89°34'05" W
2673.11' (M)

E. 1/4 COR.
SEC. 34, T3N, R68W
FOUND 3 1/4" ALUM. CAP
P.L.S. NO. 29420

N 00°18'58" W 2650.43' (M)

BOTTOM OF HOLE:
1467' FSL & 1913' FEL

S. 1/4 COR.
SEC. 34, T3N, R68W
FOUND 3 1/4" ALUM. CAP
P.L.S. NO. 18482

SE. COR.
SEC. 34, T3N, R68W
FOUND TWO 1" BRASS
PLUG REFERENCE
MONUMENTS
PER CORNER RECORD
L.S. NO. 29420

MATCH LINE
SEE SHEET 3

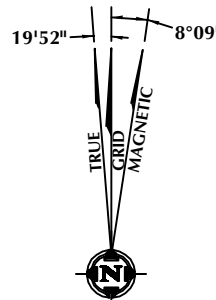
CERTIFICATE OF SURVEYOR:

THIS IS TO CERTIFY THAT THE ABOVE PLAT WAS PREPARED FROM FIELD NOTES OF ACTUAL SURVEY MADE BY ME OR UNDER MY SUPERVISION AND THAT THE SAME ARE TRUE AND CORRECT TO THE BEST OF MY KNOWLEDGE AND BELIEF. THIS CERTIFICATE DOES NOT REPRESENT A LAND SURVEY PLAT OR IMPROVEMENT SURVEY PLAT AS DEFINED BY C.R.S. 38-51-102 AND CANNOT BE RELIED UPON TO DETERMINE OWNERSHIP.

Randall K. French
PROFESSIONAL LAND SURVEYOR
COLORADO REGISTRATION NUMBER 18512

RANDALL K. FRENCH
PROFESSIONAL LAND SURVEYOR
COLORADO REGISTRATION NUMBER 18512

NOTICE:
ACCORDING TO COLORADO STATE LAW YOU MUST COMMENCE ANY LEGAL ACTION BASED UPON ANY DEFECT IN THIS SURVEY WITHIN THREE YEARS AFTER YOU FIRST DISCOVER SUCH DEFECT. IN NO EVENT MAY ANY ACTION BASED UPON ANY DEFECT IN THIS SURVEY BE COMMENCED MORE THAN TEN YEARS FROM THE DATE ON THE CERTIFICATION SHOWN HEREON.



NOTE:
MAGNETIC NORTH IS CURRENT AS OF 9/10/2015.
MAGNETIC NORTH CHANGES WEST 0°06' PER YEAR.

NOTES:

- ▲ INDICATES SECTION CORNER
- INDICATES CALCULATED CORNER
- ELEVATION BASED ON NAVD88 (GEOID09)
- BASIS OF BEARING DERIVED FROM COLORADO COORDINATE SYSTEM OF 1983 NORTH ZONE.
- ALL MEASURED DISTANCES ARE GRID.
- COMBINED SCALE FACTOR: .99972911 CALCULATED FROM THE S. 1/4 CORNER OF SECTION 10, T2N, R68W
- OPERATOR: ROB WILSON / PDOP = 1.6
- SEE ADDENDUM TO WELL LOCATION CERTIFICATE FOR EXISTING IMPROVEMENTS WITHIN 500' OF THE WELL PAD.
- WELL FOOTAGES ARE MEASURED AT RIGHT ANGLES TO THE SECTION LINES.
- THE BOTTOM OF HOLE BEARS N00°24'06"W, 13569' FROM THE HEEL LOCATION.



WELL PAD - CAMENISCH 36N-22HZ

CAMENISCH 10N-34HZ
WELL LOCATION CERTIFICATE
2229' FNL & 2178' FEL SWNE (SURFACE)
1587' FNL & 1830' FEL SWNE (HEEL)
LOCATED IN SECTION 15
T2N, R68W, 6TH P.M.
1467' FSL & 1913' FEL NWSE (BOTTOM)
LOCATED IN SECTION 34
T3N, R68W, 6TH P.M.
WELD COUNTY, COLORADO

**Kerr-McGee Oil &
Gas Onshore L.P.**
1099 18th Street
Denver, Colorado 80202



CONSULTING, LLC

SHERIDAN OFFICE
1095 Saberton Avenue
Sheridan, Wyoming 82801
Phone 307-674-0609

LOVELAND OFFICE
1635 Foxtrail Drive, Suite 204
Loveland, Colorado 80538
Phone 970-776-4331

DRAFTED BY: LMO	CHECKED BY: RKF	SHEET NO: 4
DATE DRAFTED: 10/17/16	DATE SURVEYED: 7/15/15	4 OF 4
REVISED:	FILE NAME: 15-23	