

HALLIBURTON

iCem[®] Service

NOBLE ENERGY INC E-BUSINESS

For: Pete Burns

Date: Friday, October 28, 2016

Fairmeadows Land Co 1

PTA

Case 1

Job Date: Friday, October 28, 2016

Sincerely,

Aaron Smith

The Road to Excellence Starts with Safety

Sold To #: 345242	Ship To #: 3764013	Quote #:	Sales Order #: 0903628704
Customer: NOBLE ENERGY INC E-BUSINESS		Customer Rep:	
Well Name: Fairmeadows Land Co	Well #: 1	API/UWI #:	
Field:	City (SAP): GILL	County/Parish: WELD	State: COLORADO
Legal Description:			
Contractor: UNKNOWN		Rig/Platform Name/Num: WORKOVER RIG	
Job BOM: 7528			
Well Type: GAS			
Sales Person: HALAMERICA\HB61755		Srvc Supervisor: Aaron Smith	

Job

Formation Name			
Formation Depth (MD)	Top		Bottom
Form Type			BHST
Job depth MD	4002ft		Job Depth TVD
Water Depth			Wk Ht Above Floor
Perforation Depth (MD)	From		To

Well Data

Description	New / Used	Size in	ID in	Weight lbm/ft	Thread	Grade	Top MD ft	Bottom MD ft	Top TVD ft	Bottom TVD ft
Casing		8.625	8.097	24			0	173		0
Tubing		2.875	2.441	6.5			0	4002		0
Casing		5.5	4.892	17			0	4002	0	0

Tools and Accessories

Type	Size in	Qty	Make	Depth ft		Type	Size in	Qty	Make
Guide Shoe	2.875			4002		Top Plug	2.875		HES
Float Shoe	2.875					Bottom Plug	2.875		HES
Float Collar	2.875					SSR plug set	2.875		HES
Insert Float	2.875					Plug Container	2.875		HES
Stage Tool	2.875					Centralizers	2.875		HES

Fluid Data

Stage/Plug #: 1

Fluid #	Stage Type	Fluid Name	Qty	Qty UoM	Mixing Density lbm/gal	Yield ft3/sack	Mix Fluid Gal	Rate bbl/min	Total Mix Fluid Gal
1	PLUG #1 4002'	HALCEM (TM) SYSTEM	100	sack	15.8	1.15		2	5
4.98 Gal		FRESH WATER							

Fluid #	Stage Type	Fluid Name	Qty	Qty UoM	Mixing Density lbm/gal	Yield ft3/sack	Mix Fluid Gal	Rate bbl/min	Total Mix Fluid Gal
2	PLUG #2 810'	HALCEM (TM) SYSTEM	500	sack	15.8	1.15		2	5

4.99 Gal		FRESH WATER		
Cement Left In Pipe	Amount	ft	Reason	Shoe Joint
Fluid Data				
Stage/Plug #: 2				
Cement Left In Pipe	Amount	ft	Reason	Shoe Joint
Comment , No cement to surface, 12 bbls to establish circulation, sporadic returns throughout the cement job.				

4.99 Gal	FRESH WATER			
Cement Left In Pipe	Amount	ft	Reason	Shoe Joint
Fluid Data				
Stage/Plug #: 2				
Cement Left In Pipe	Amount	ft	Reason	Shoe Joint
Comment , No cement to surface, 12 bbls to establish circulation, sporadic returns throughout the cement job.				

HALLIBURTON

Customer: NOBLE ENERGY INC E-BUSINESS

Job: Noble Energy Fairmeadows Land Co 1 PTA

Case: Case 1 | SO#: 903628704

1.0 Real-Time Job Summary

1.1 Job Event Log

Type	Seq. No.	Activity	Graph Label	Date	Time	Source	Comb Pump Rate (bbl/min)	DH Density (ppg)	PS Pump Press (psi)	Pump Stg Tot (bbl)	Comments
Event	1	Call Out	Call Out	10/28/2016	04:30:00	USER					For on location @ 0830
Event	2	Depart Yard Safety Meeting	Depart Yard Safety Meeting	10/28/2016	07:15:00	USER					Journey management meeting held prior to departure
Event	3	Depart from Service Center or Other Site	Depart from Service Center or Other Site	10/28/2016	07:30:00	USER					Journey called into dispatch
Event	4	Arrive at Location from Service Center	Arrive at Location from Service Center	10/28/2016	09:00:00	USER					With pump and one bulk truck, one bulk truck stuck in ditch, rig circulating on bottom
Event	5	Pre-Rig Up Safety Meeting	Pre-Rig Up Safety Meeting	10/28/2016	09:05:00	USER					JSA to discuss the hazards of rig-up
Event	6	Rig-Up Equipment	Rig-Up Equipment	10/28/2016	09:15:00	USER					
Event	7	Rig-Up Completed	Rig-Up Completed	10/28/2016	09:45:00	USER					
Event	8	Pre-Job Safety Meeting	Pre-Job Safety Meeting	10/28/2016	10:15:00	USER	0.00	8.26	225.00	2.9	With all essential personnel
Event	9	Start Job	Start Job	10/28/2016	10:20:38	COM5	0.00	8.34	122.00	0.0	With water supplied from frac tank, water tested good to mix cement, PH 7, CL O, Temp 65
Event	10	Test Lines	Test Lines	10/28/2016	10:23:00	USER	0.00	8.35	46.00	2.0	@3000 psi
Event	11	Pump Water	Pump Water	10/28/2016	10:26:00	USER	0.00	8.53	157.00	2.0	5 bbls fresh water to establish circulation

iCem Service

(v. 4.2.393)

Created: Friday, October 28, 2016

HALLIBURTON

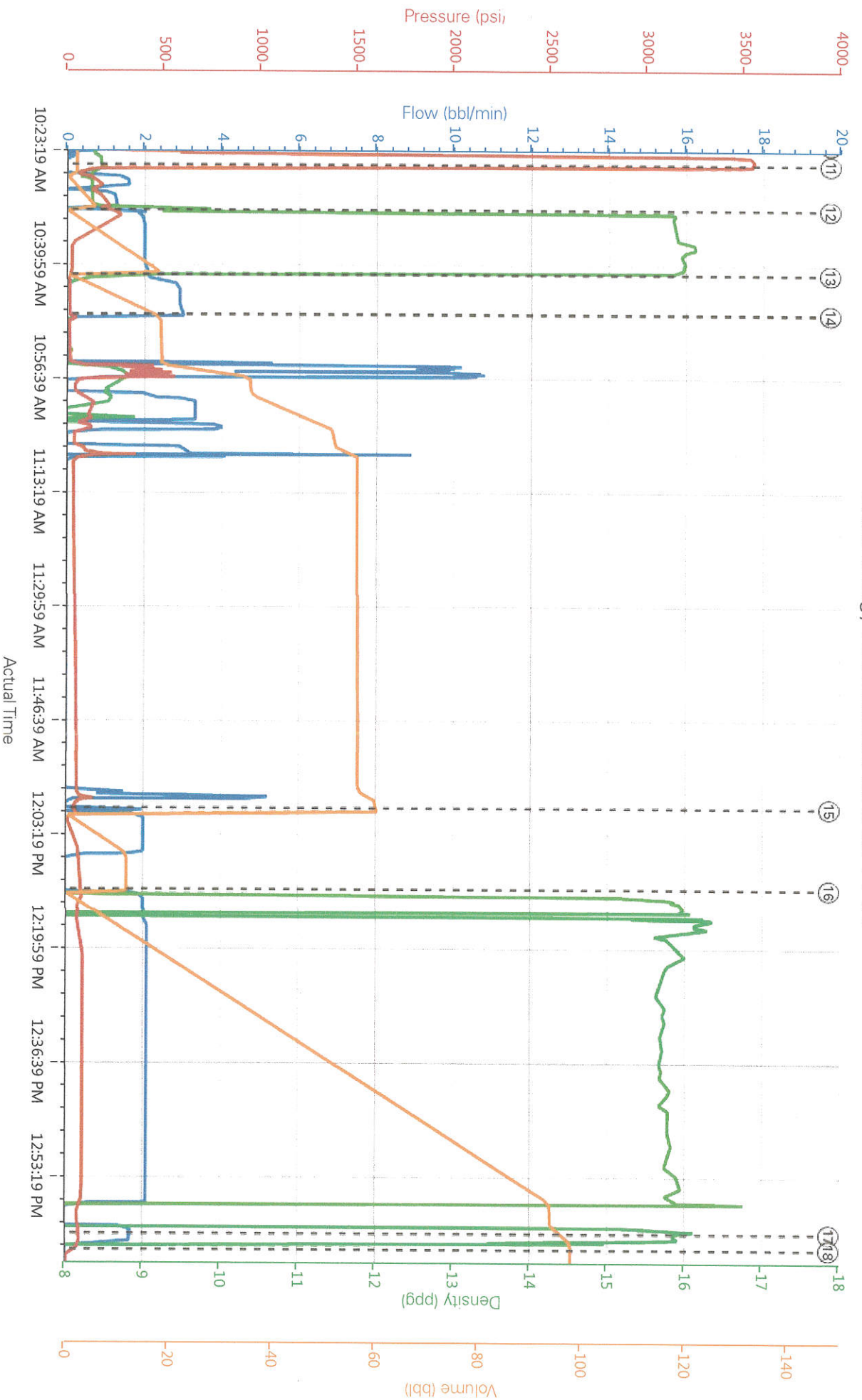
Customer: NOBLE ENERGY INC E-BUSINESS

Job: Noble Energy Fairmeadows Land Co 1 PTA

Case: Case 1 | SO#: 903628704

Event	12	Pump Cement	Pump Cement	10/28/201 6	10:32:34	USER	1.90	15.54	289.00	0.9	100 sks (20.48 bbls) G cement @ 15.8 ppg verified with scales.
Event	13	Pump Displacement	Pump Displacement	10/28/201 6	10:41:59	USER	2.20	8.26	9.00	1.5	21.92 bbls to balance
Event	14	Shutdown	Shutdown	10/28/201 6	10:47:51	USER	0.00	8.02	38.00	18.1	Break off surface lines, lay down tubing to 810'
Event	15	Pump Water	Pump Water	10/28/201 6	12:00:00	USER	0.00	7.85	26.00	60.2	12 bbls fresh water to establish circulation
Event	16	Pump Cement	Pump Cement	10/28/201 6	12:11:51	USER	1.70	7.22	88.00	0.2	500 sks (102.41 bbls) G cement @ 15.8 ppg, verified with scales
Event	17	Pump Displacement	Pump Displacement	10/28/201 6	13:02:04	USER	1.60	15.84	77.00	96.6	1.5 bbls fresh water to displace tubing
Event	18	Shutdown	Shutdown	10/28/201 6	13:04:24	USER	0.00	-0.27	3.00	97.8	POOH
Event	19	End Job	End Job	10/28/201 6	13:04:46	USER	0.00	-0.27	1.00	97.8	Thanks Aaron Smith and crew
Event	20	Pre-Rig Down Safety Meeting	Pre-Rig Down Safety Meeting	10/28/201 6	13:20:00	USER	0.00	8.14	44.00	97.8	JSA to discuss the hazards of rig-down
Event	21	Rig-Down Equipment	Rig-Down Equipment	10/28/201 6	13:36:45	USER	0.00	-0.28	24.00	156.8	
Event	22	Rig-Down Completed	Rig-Down Completed	10/28/201 6	13:40:00	USER					
Event	23	Depart Location for Service Center or Other Site	Depart Location for Service Center or Other Site	10/28/201 6	13:50:00	USER					Journey management meeting held prior to departure
Event	24	Depart Location Safety Meeting	Depart Location Safety Meeting	10/28/201 6	14:00:00	USER					Journey called into dispatch

Noble Energy Fairmeadows Land Co 1 PTA



Comb Pump Rate (bbl/min) DH Density (ppg) PS Pump Press (psi) Pump Stig Tot (bbl)

⑨ Start Job 0.8,34;115.72;0 ⑪ Pump Water 0.8,47;148;2 ⑬ Pump Displacement 2.2;8.25;9;15 ⑮ Pump Water 0.7;85;26;60.2 ⑰ Pump Displacement 1.6;15.84;77;96.6 ⑲ Pre-Rig Dow
 5.2.9 ⑫ Test Lines 0.8;35;46;2 ⑭ Pump Cement 1.9;15.64;287;0.9 ⑯ Shutdown 0.7;93;34;18.1 ⑰ Pump Cement 1.7;722;88;0.2 ⑱ Shutdown 0.0;27;3;97.8 20 Rig-Down E