

# Bayswater Exploration & Production, LLC

Well Name: **Wilkinson K-12HC**

Surface Location: Wilkinson 1-P Pad Sec.1-T6N-R65W

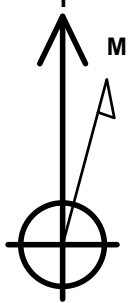
North American Datum 1983 , US State Plane 1983, Colorado Northern Zone

Ground Elevation: 4774.0

+N/-S	+E/-W	Northing	Easting	Latitude	Longitude	Slot
0.0	0.0	1429421.88	3244953.87	40.508824	-104.619057	
RKB - 22' WELL @ 4796.0ft (RKB - 22')						

## WELLBORE TARGET DETAILS

Name	TVD	+N/-S	+E/-W	Shape
SHL 316'FSL, 450'FWL, SEC.1	1.0	0.0	0.0	Point
BHL 470'FSL, 2285'FWL, SEC.13	7127.0	-10489.4	1769.6	Point
LPL 310'FNL, 2285'FWL, SEC.12	7141.0	-672.5	1828.9	Point



Azimuths to True North  
Magnetic North: 8.07°

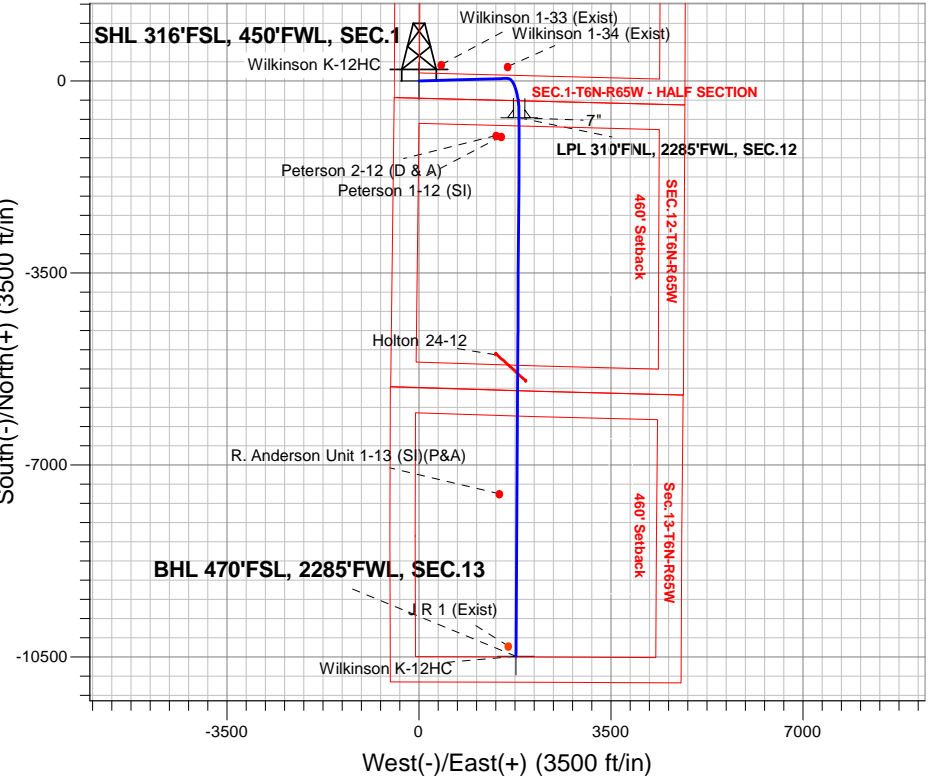
Magnetic Field  
Strength: 52639.8nT  
Dip Angle: 66.97°  
Date: 10/20/2016  
Model: IGRF2010

Wilkinson 1-P Pad Sec.1-T6N-R65W  
Wilkinson K-12HC  
Plan #2 (10-18-16)  
11:32, October 20 2016

## ANNOTATIONS

TVD	MD	Annotation
400.0	400.0	KOP - Start Build 1.00
2109.4	2135.8	Start 4548.2 hold at 2135.8 MD
6450.4	6684.0	Start DLS 8.00 TFO 91.86
7141.0	7817.4	Start 9817.1 hold at 7817.4 MD
7127.0	17634.5	TD at 17634.5

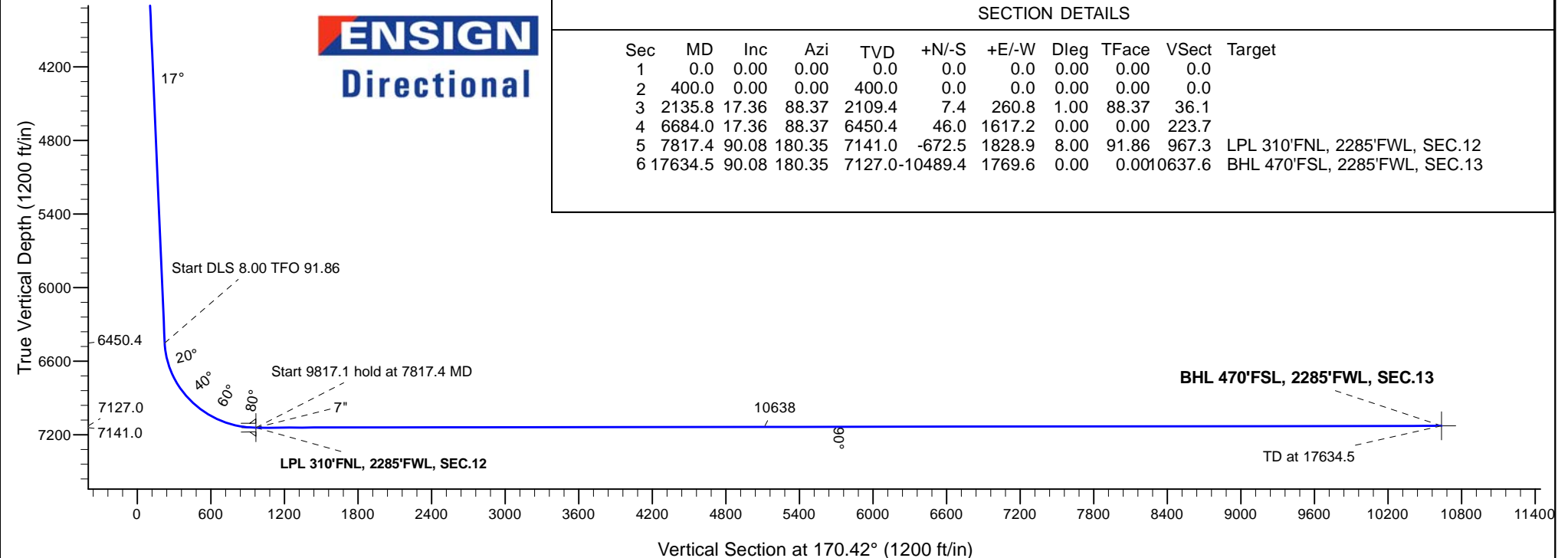
South(-)/North(+) (3500 ft/in)



## SECTION DETAILS

Sec	MD	Inc	Azi	TVD	+N/-S	+E/-W	Dleg	TFace	VSect	Target
1	0.0	0.00	0.00	0.0	0.0	0.0	0.00	0.00	0.0	
2	400.0	0.00	0.00	400.0	0.0	0.0	0.00	0.00	0.0	
3	2135.8	17.36	88.37	2109.4	7.4	260.8	1.00	88.37	36.1	
4	6684.0	17.36	88.37	6450.4	46.0	1617.2	0.00	0.00	223.7	
5	7817.4	90.08	180.35	7141.0	-672.5	1828.9	8.00	91.86	967.3	LPL 310'FNL, 2285'FWL, SEC.12
6	17634.5	90.08	180.35	7127.0	-10489.4	1769.6	0.00	0.00	10637.6	BHL 470'FSL, 2285'FWL, SEC.13

**ENSIGN**  
Directional





# **Bayswater Exploration & Production, LLC**

**SEC.1-T6N-R65W**

**Wilkinson 1-P Pad Sec.1-T6N-R65W**

**Wilkinson K-12HC**

**Wellbore #1**

**Plan: Plan #2 (10-18-16)**

## **Standard Planning Report**

**20 October, 2016**



**BAYSWATER**  
**EXPLORATION & PRODUCTION, LLC**

<b>Database:</b>	US_EDM	<b>Local Co-ordinate Reference:</b>	Well Wilkinson K-12HC
<b>Company:</b>	Bayswater Exploration & Production, LLC	<b>TVD Reference:</b>	WELL @ 4796.0ft (RKB - 22')
<b>Project:</b>	SEC.1-T6N-R65W	<b>MD Reference:</b>	WELL @ 4796.0ft (RKB - 22')
<b>Site:</b>	Wilkinson 1-P Pad Sec.1-T6N-R65W	<b>North Reference:</b>	True
<b>Well:</b>	Wilkinson K-12HC	<b>Survey Calculation Method:</b>	Minimum Curvature
<b>Wellbore:</b>	Wellbore #1		
<b>Design:</b>	Plan #2 (10-18-16)		

<b>Project</b>	SEC.1-T6N-R65W, Weld County, Colorado		
<b>Map System:</b>	US State Plane 1983	<b>System Datum:</b>	Mean Sea Level
<b>Geo Datum:</b>	North American Datum 1983		Using Well Reference Point
<b>Map Zone:</b>	Colorado Northern Zone		Using geodetic scale factor

Site		Wilkinson 1-P Pad Sec.1-T6N-R65W			
Site Position:		Northing:	1,429,424.05 usft	Latitude:	40.508834
From:	Lat/Long	Easting:	3,244,803.97 usft	Longitude:	-104.619596
Position Uncertainty:	0.0 ft	Slot Radius:	13-3/16 "	Grid Convergence:	0.57

Well	Wilkinson K-12HC					
Well Position	+N/-S	-3.7 ft	Northing:	1,429,421.88 usft	Latitude:	40.508824
	+E/-W	149.9 ft	Easting:	3,244,953.87 usft	Longitude:	-104.619057
Position Uncertainty		0.0 ft	Wellhead Elevation:		Ground Level:	4,774.0 ft

<b>Wellbore</b>	Wellbore #1				
<b>Magnetics</b>	<b>Model Name</b>	<b>Sample Date</b>	<b>Declination (°)</b>	<b>Dip Angle (°)</b>	<b>Field Strength (nT)</b>
	IGRF2010	10/20/2016	8.07	66.97	52,640

<b>Design</b>	Plan #2 (10-18-16)			
<b>Audit Notes:</b>				
<b>Version:</b>	<b>Phase:</b>	PROTOTYPE	<b>Tie On Depth:</b>	0.0
<b>Vertical Section:</b>	<b>Depth From (TVD)</b>	<b>+N/-S</b>	<b>+E/-W</b>	<b>Direction</b>
	(ft)	(ft)	(ft)	(°)
	0.0	0.0	0.0	170.42

<b>Plan Sections</b>										
Measured Depth (ft)	Inclination (°)	Azimuth (°)	Vertical Depth (ft)	+N/-S (ft)	+E/-W (ft)	Dogleg Rate (°/100usft)	Build Rate (°/100usft)	Turn Rate (°/100usft)	TFO (°)	Target
0.0	0.00	0.00	0.0	0.0	0.0	0.00	0.00	0.00	0.00	
400.0	0.00	0.00	400.0	0.0	0.0	0.00	0.00	0.00	0.00	
2,135.8	17.36	88.37	2,109.4	7.4	260.8	1.00	1.00	0.00	88.37	
6,684.0	17.36	88.37	6,450.4	46.0	1,617.2	0.00	0.00	0.00	0.00	
7,817.4	90.08	180.35	7,141.0	-672.5	1,828.9	8.00	6.42	8.12	91.86	LPL 310'FNL, 2285'F
17,634.5	90.08	180.35	7,127.0	-10,489.4	1,769.6	0.00	0.00	0.00	0.00	BHL 470'FSL, 2285'F

Database:	US_EDM	Local Co-ordinate Reference:	Well Wilkinson K-12HC
Company:	Bayswater Exploration & Production, LLC	TVD Reference:	WELL @ 4796.0ft (RKB - 22')
Project:	SEC.1-T6N-R65W	MD Reference:	WELL @ 4796.0ft (RKB - 22')
Site:	Wilkinson 1-P Pad Sec.1-T6N-R65W	North Reference:	True
Well:	Wilkinson K-12HC	Survey Calculation Method:	Minimum Curvature
Wellbore:	Wellbore #1		
Design:	Plan #2 (10-18-16)		

Planned Survey									
Measured Depth (ft)	Inclination (°)	Azimuth (°)	Vertical Depth (ft)	+N/-S (ft)	+E/-W (ft)	Vertical Section (ft)	Dogleg Rate (°/100usft)	Build Rate (°/100usft)	Turn Rate (°/100usft)
0.0	0.00	0.00	0.0	0.0	0.0	0.0	0.00	0.00	0.00
100.0	0.00	0.00	100.0	0.0	0.0	0.0	0.00	0.00	0.00
200.0	0.00	0.00	200.0	0.0	0.0	0.0	0.00	0.00	0.00
300.0	0.00	0.00	300.0	0.0	0.0	0.0	0.00	0.00	0.00
400.0	0.00	0.00	400.0	0.0	0.0	0.0	0.00	0.00	0.00
KOP - Start Build 1.00									
500.0	1.00	88.37	500.0	0.0	0.9	0.1	1.00	1.00	0.00
600.0	2.00	88.37	600.0	0.1	3.5	0.5	1.00	1.00	0.00
700.0	3.00	88.37	699.9	0.2	7.8	1.1	1.00	1.00	0.00
800.0	4.00	88.37	799.7	0.4	14.0	1.9	1.00	1.00	0.00
900.0	5.00	88.37	899.4	0.6	21.8	3.0	1.00	1.00	0.00
1,000.0	6.00	88.37	998.9	0.9	31.4	4.3	1.00	1.00	0.00
1,100.0	7.00	88.37	1,098.3	1.2	42.7	5.9	1.00	1.00	0.00
1,200.0	8.00	88.37	1,197.4	1.6	55.7	7.7	1.00	1.00	0.00
1,300.0	9.00	88.37	1,296.3	2.0	70.5	9.8	1.00	1.00	0.00
1,400.0	10.00	88.37	1,394.9	2.5	87.0	12.0	1.00	1.00	0.00
1,500.0	11.00	88.37	1,493.3	3.0	105.2	14.6	1.00	1.00	0.00
1,600.0	12.00	88.37	1,591.2	3.6	125.2	17.3	1.00	1.00	0.00
1,700.0	13.00	88.37	1,688.9	4.2	146.8	20.3	1.00	1.00	0.00
1,800.0	14.00	88.37	1,786.1	4.8	170.1	23.5	1.00	1.00	0.00
1,900.0	15.00	88.37	1,882.9	5.5	195.2	27.0	1.00	1.00	0.00
2,000.0	16.00	88.37	1,979.3	6.3	221.9	30.7	1.00	1.00	0.00
2,100.0	17.00	88.37	2,075.2	7.1	250.3	34.6	1.00	1.00	0.00
2,135.8	17.36	88.37	2,109.4	7.4	260.8	36.1	1.00	1.00	0.00
Start 4548.2 hold at 2135.8 MD									
2,200.0	17.36	88.37	2,170.6	8.0	280.0	38.7	0.00	0.00	0.00
2,300.0	17.36	88.37	2,266.1	8.8	309.8	42.8	0.00	0.00	0.00
2,400.0	17.36	88.37	2,361.5	9.7	339.6	47.0	0.00	0.00	0.00
2,500.0	17.36	88.37	2,457.0	10.5	369.4	51.1	0.00	0.00	0.00
2,600.0	17.36	88.37	2,552.4	11.4	399.3	55.2	0.00	0.00	0.00
2,700.0	17.36	88.37	2,647.9	12.2	429.1	59.4	0.00	0.00	0.00
2,800.0	17.36	88.37	2,743.3	13.0	458.9	63.5	0.00	0.00	0.00
2,900.0	17.36	88.37	2,838.8	13.9	488.7	67.6	0.00	0.00	0.00
3,000.0	17.36	88.37	2,934.2	14.7	518.6	71.7	0.00	0.00	0.00
3,100.0	17.36	88.37	3,029.7	15.6	548.4	75.9	0.00	0.00	0.00
3,200.0	17.36	88.37	3,125.1	16.4	578.2	80.0	0.00	0.00	0.00
3,300.0	17.36	88.37	3,220.5	17.3	608.0	84.1	0.00	0.00	0.00
3,400.0	17.36	88.37	3,316.0	18.1	637.8	88.2	0.00	0.00	0.00
3,500.0	17.36	88.37	3,411.4	19.0	667.7	92.4	0.00	0.00	0.00
3,600.0	17.36	88.37	3,506.9	19.8	697.5	96.5	0.00	0.00	0.00
3,700.0	17.36	88.37	3,602.3	20.7	727.3	100.6	0.00	0.00	0.00
3,800.0	17.36	88.37	3,697.8	21.5	757.1	104.7	0.00	0.00	0.00
3,900.0	17.36	88.37	3,793.2	22.4	787.0	108.9	0.00	0.00	0.00
4,000.0	17.36	88.37	3,888.7	23.2	816.8	113.0	0.00	0.00	0.00
4,100.0	17.36	88.37	3,984.1	24.1	846.6	117.1	0.00	0.00	0.00
4,200.0	17.36	88.37	4,079.6	24.9	876.4	121.2	0.00	0.00	0.00
4,300.0	17.36	88.37	4,175.0	25.8	906.2	125.4	0.00	0.00	0.00
4,400.0	17.36	88.37	4,270.5	26.6	936.1	129.5	0.00	0.00	0.00
4,500.0	17.36	88.37	4,365.9	27.5	965.9	133.6	0.00	0.00	0.00
4,600.0	17.36	88.37	4,461.3	28.3	995.7	137.7	0.00	0.00	0.00
4,700.0	17.36	88.37	4,556.8	29.2	1,025.5	141.9	0.00	0.00	0.00
4,800.0	17.36	88.37	4,652.2	30.0	1,055.4	146.0	0.00	0.00	0.00
4,900.0	17.36	88.37	4,747.7	30.9	1,085.2	150.1	0.00	0.00	0.00
5,000.0	17.36	88.37	4,843.1	31.7	1,115.0	154.2	0.00	0.00	0.00

Database:	US_EDM	Local Co-ordinate Reference:	Well Wilkinson K-12HC
Company:	Bayswater Exploration & Production, LLC	TVD Reference:	WELL @ 4796.0ft (RKB - 22')
Project:	SEC.1-T6N-R65W	MD Reference:	WELL @ 4796.0ft (RKB - 22')
Site:	Wilkinson 1-P Pad Sec.1-T6N-R65W	North Reference:	True
Well:	Wilkinson K-12HC	Survey Calculation Method:	Minimum Curvature
Wellbore:	Wellbore #1		
Design:	Plan #2 (10-18-16)		

Planned Survey										
Measured Depth (ft)	Inclination (°)	Azimuth (°)	Vertical Depth (ft)	+N/-S (ft)	+E/-W (ft)	Vertical Section (ft)	Dogleg Rate (°/100usft)	Build Rate (°/100usft)	Turn Rate (°/100usft)	
5,100.0	17.36	88.37	4,938.6	32.5	1,144.8	158.4	0.00	0.00	0.00	
5,200.0	17.36	88.37	5,034.0	33.4	1,174.7	162.5	0.00	0.00	0.00	
5,300.0	17.36	88.37	5,129.5	34.2	1,204.5	166.6	0.00	0.00	0.00	
5,400.0	17.36	88.37	5,224.9	35.1	1,234.3	170.7	0.00	0.00	0.00	
5,500.0	17.36	88.37	5,320.4	35.9	1,264.1	174.9	0.00	0.00	0.00	
5,600.0	17.36	88.37	5,415.8	36.8	1,293.9	179.0	0.00	0.00	0.00	
5,700.0	17.36	88.37	5,511.2	37.6	1,323.8	183.1	0.00	0.00	0.00	
5,800.0	17.36	88.37	5,606.7	38.5	1,353.6	187.2	0.00	0.00	0.00	
5,900.0	17.36	88.37	5,702.1	39.3	1,383.4	191.4	0.00	0.00	0.00	
6,000.0	17.36	88.37	5,797.6	40.2	1,413.2	195.5	0.00	0.00	0.00	
6,100.0	17.36	88.37	5,893.0	41.0	1,443.1	199.6	0.00	0.00	0.00	
6,200.0	17.36	88.37	5,988.5	41.9	1,472.9	203.7	0.00	0.00	0.00	
6,300.0	17.36	88.37	6,083.9	42.7	1,502.7	207.9	0.00	0.00	0.00	
6,400.0	17.36	88.37	6,179.4	43.6	1,532.5	212.0	0.00	0.00	0.00	
6,500.0	17.36	88.37	6,274.8	44.4	1,562.3	216.1	0.00	0.00	0.00	
6,600.0	17.36	88.37	6,370.3	45.3	1,592.2	220.2	0.00	0.00	0.00	
6,684.0	17.36	88.37	6,450.4	46.0	1,617.2	223.7	0.00	0.00	0.00	
Start DLS 8.00 TFO 91.86										
6,700.0	17.36	92.66	6,465.7	45.9	1,622.0	224.5	8.00	0.03	26.82	
6,800.0	19.35	117.48	6,560.8	37.6	1,651.6	237.7	8.00	1.98	24.82	
6,900.0	23.90	135.49	6,653.8	15.5	1,680.6	264.3	8.00	4.55	18.01	
7,000.0	29.87	147.36	6,743.0	-20.0	1,708.3	303.9	8.00	5.97	11.87	
7,100.0	36.56	155.40	6,826.7	-68.1	1,734.1	355.7	8.00	6.69	8.04	
7,200.0	43.64	161.20	6,903.1	-128.0	1,757.7	418.6	8.00	7.08	5.79	
7,300.0	50.95	165.64	6,970.9	-198.4	1,778.5	491.5	8.00	7.31	4.44	
7,400.0	58.39	169.24	7,028.7	-278.0	1,796.1	572.9	8.00	7.44	3.60	
7,500.0	65.92	172.30	7,075.4	-365.2	1,810.2	661.2	8.00	7.53	3.06	
7,600.0	73.51	175.01	7,110.1	-458.3	1,820.5	754.8	8.00	7.58	2.72	
7,700.0	81.12	177.52	7,132.0	-555.6	1,826.8	851.7	8.00	7.62	2.51	
7,800.0	88.76	179.93	7,140.8	-655.1	1,829.0	950.2	8.00	7.63	2.41	
7,817.4	90.08	180.35	7,141.0	-672.5	1,828.9	967.3	8.00	7.64	2.39	
Start 9817.1 hold at 7817.4 MD										
7,900.0	90.08	180.35	7,140.9	-755.1	1,828.4	1,048.7	0.00	0.00	0.00	
8,000.0	90.08	180.35	7,140.7	-855.1	1,827.8	1,147.2	0.00	0.00	0.00	
8,100.0	90.08	180.35	7,140.6	-955.1	1,827.2	1,245.7	0.00	0.00	0.00	
8,200.0	90.08	180.35	7,140.5	-1,055.1	1,826.6	1,344.2	0.00	0.00	0.00	
8,300.0	90.08	180.35	7,140.3	-1,155.1	1,826.0	1,442.8	0.00	0.00	0.00	
8,400.0	90.08	180.35	7,140.2	-1,255.1	1,825.4	1,541.3	0.00	0.00	0.00	
8,500.0	90.08	180.35	7,140.0	-1,355.1	1,824.8	1,639.8	0.00	0.00	0.00	
8,600.0	90.08	180.35	7,139.9	-1,455.1	1,824.2	1,738.3	0.00	0.00	0.00	
8,700.0	90.08	180.35	7,139.7	-1,555.1	1,823.6	1,836.8	0.00	0.00	0.00	
8,800.0	90.08	180.35	7,139.6	-1,655.1	1,823.0	1,935.3	0.00	0.00	0.00	
8,900.0	90.08	180.35	7,139.5	-1,755.1	1,822.4	2,033.8	0.00	0.00	0.00	
9,000.0	90.08	180.35	7,139.3	-1,855.1	1,821.8	2,132.3	0.00	0.00	0.00	
9,100.0	90.08	180.35	7,139.2	-1,955.1	1,821.2	2,230.8	0.00	0.00	0.00	
9,200.0	90.08	180.35	7,139.0	-2,055.1	1,820.6	2,329.3	0.00	0.00	0.00	
9,300.0	90.08	180.35	7,138.9	-2,155.1	1,820.0	2,427.8	0.00	0.00	0.00	
9,400.0	90.08	180.35	7,138.7	-2,255.1	1,819.4	2,526.3	0.00	0.00	0.00	
9,500.0	90.08	180.35	7,138.6	-2,355.1	1,818.8	2,624.8	0.00	0.00	0.00	
9,600.0	90.08	180.35	7,138.5	-2,455.1	1,818.2	2,723.3	0.00	0.00	0.00	
9,700.0	90.08	180.35	7,138.3	-2,555.1	1,817.6	2,821.8	0.00	0.00	0.00	
9,800.0	90.08	180.35	7,138.2	-2,655.1	1,816.9	2,920.3	0.00	0.00	0.00	
9,900.0	90.08	180.35	7,138.0	-2,755.1	1,816.3	3,018.8	0.00	0.00	0.00	
10,000.0	90.08	180.35	7,137.9	-2,855.1	1,815.7	3,117.3	0.00	0.00	0.00	

<b>Database:</b>	US_EDM	<b>Local Co-ordinate Reference:</b>	Well Wilkinson K-12HC
<b>Company:</b>	Bayswater Exploration & Production, LLC	<b>TVD Reference:</b>	WELL @ 4796.0ft (RKB - 22')
<b>Project:</b>	SEC.1-T6N-R65W	<b>MD Reference:</b>	WELL @ 4796.0ft (RKB - 22')
<b>Site:</b>	Wilkinson 1-P Pad Sec.1-T6N-R65W	<b>North Reference:</b>	True
<b>Well:</b>	Wilkinson K-12HC	<b>Survey Calculation Method:</b>	Minimum Curvature
<b>Wellbore:</b>	Wellbore #1		
<b>Design:</b>	Plan #2 (10-18-16)		

Planned Survey									
Measured Depth (ft)	Inclination (°)	Azimuth (°)	Vertical Depth (ft)	+N/-S (ft)	+E/-W (ft)	Vertical Section (ft)	Dogleg Rate (°/100usft)	Build Rate (°/100usft)	Turn Rate (°/100usft)
10,100.0	90.08	180.35	7,137.7	-2,955.1	1,815.1	3,215.8	0.00	0.00	0.00
10,200.0	90.08	180.35	7,137.6	-3,055.0	1,814.5	3,314.3	0.00	0.00	0.00
10,300.0	90.08	180.35	7,137.5	-3,155.0	1,813.9	3,412.8	0.00	0.00	0.00
10,400.0	90.08	180.35	7,137.3	-3,255.0	1,813.3	3,511.3	0.00	0.00	0.00
10,500.0	90.08	180.35	7,137.2	-3,355.0	1,812.7	3,609.8	0.00	0.00	0.00
10,600.0	90.08	180.35	7,137.0	-3,455.0	1,812.1	3,708.3	0.00	0.00	0.00
10,700.0	90.08	180.35	7,136.9	-3,555.0	1,811.5	3,806.9	0.00	0.00	0.00
10,800.0	90.08	180.35	7,136.7	-3,655.0	1,810.9	3,905.4	0.00	0.00	0.00
10,900.0	90.08	180.35	7,136.6	-3,755.0	1,810.3	4,003.9	0.00	0.00	0.00
11,000.0	90.08	180.35	7,136.5	-3,855.0	1,809.7	4,102.4	0.00	0.00	0.00
11,100.0	90.08	180.35	7,136.3	-3,955.0	1,809.1	4,200.9	0.00	0.00	0.00
11,200.0	90.08	180.35	7,136.2	-4,055.0	1,808.5	4,299.4	0.00	0.00	0.00
11,300.0	90.08	180.35	7,136.0	-4,155.0	1,807.9	4,397.9	0.00	0.00	0.00
11,400.0	90.08	180.35	7,135.9	-4,255.0	1,807.3	4,496.4	0.00	0.00	0.00
11,500.0	90.08	180.35	7,135.7	-4,355.0	1,806.7	4,594.9	0.00	0.00	0.00
11,600.0	90.08	180.35	7,135.6	-4,455.0	1,806.1	4,693.4	0.00	0.00	0.00
11,700.0	90.08	180.35	7,135.5	-4,555.0	1,805.5	4,791.9	0.00	0.00	0.00
11,800.0	90.08	180.35	7,135.3	-4,655.0	1,804.9	4,890.4	0.00	0.00	0.00
11,900.0	90.08	180.35	7,135.2	-4,755.0	1,804.2	4,988.9	0.00	0.00	0.00
12,000.0	90.08	180.35	7,135.0	-4,855.0	1,803.6	5,087.4	0.00	0.00	0.00
12,100.0	90.08	180.35	7,134.9	-4,955.0	1,803.0	5,185.9	0.00	0.00	0.00
12,200.0	90.08	180.35	7,134.7	-5,055.0	1,802.4	5,284.4	0.00	0.00	0.00
12,300.0	90.08	180.35	7,134.6	-5,155.0	1,801.8	5,382.9	0.00	0.00	0.00
12,400.0	90.08	180.35	7,134.5	-5,255.0	1,801.2	5,481.4	0.00	0.00	0.00
12,500.0	90.08	180.35	7,134.3	-5,355.0	1,800.6	5,579.9	0.00	0.00	0.00
12,600.0	90.08	180.35	7,134.2	-5,455.0	1,800.0	5,678.4	0.00	0.00	0.00
12,700.0	90.08	180.35	7,134.0	-5,555.0	1,799.4	5,776.9	0.00	0.00	0.00
12,800.0	90.08	180.35	7,133.9	-5,655.0	1,798.8	5,875.4	0.00	0.00	0.00
12,900.0	90.08	180.35	7,133.8	-5,755.0	1,798.2	5,973.9	0.00	0.00	0.00
13,000.0	90.08	180.35	7,133.6	-5,855.0	1,797.6	6,072.4	0.00	0.00	0.00
13,100.0	90.08	180.35	7,133.5	-5,955.0	1,797.0	6,171.0	0.00	0.00	0.00
13,200.0	90.08	180.35	7,133.3	-6,055.0	1,796.4	6,269.5	0.00	0.00	0.00
13,300.0	90.08	180.35	7,133.2	-6,155.0	1,795.8	6,368.0	0.00	0.00	0.00
13,400.0	90.08	180.35	7,133.0	-6,255.0	1,795.2	6,466.5	0.00	0.00	0.00
13,500.0	90.08	180.35	7,132.9	-6,355.0	1,794.6	6,565.0	0.00	0.00	0.00
13,600.0	90.08	180.35	7,132.8	-6,455.0	1,794.0	6,663.5	0.00	0.00	0.00
13,700.0	90.08	180.35	7,132.6	-6,555.0	1,793.4	6,762.0	0.00	0.00	0.00
13,800.0	90.08	180.35	7,132.5	-6,655.0	1,792.8	6,860.5	0.00	0.00	0.00
13,900.0	90.08	180.35	7,132.3	-6,755.0	1,792.2	6,959.0	0.00	0.00	0.00
14,000.0	90.08	180.35	7,132.2	-6,855.0	1,791.6	7,057.5	0.00	0.00	0.00
14,100.0	90.08	180.35	7,132.0	-6,955.0	1,790.9	7,156.0	0.00	0.00	0.00
14,200.0	90.08	180.35	7,131.9	-7,055.0	1,790.3	7,254.5	0.00	0.00	0.00
14,300.0	90.08	180.35	7,131.8	-7,155.0	1,789.7	7,353.0	0.00	0.00	0.00
14,400.0	90.08	180.35	7,131.6	-7,255.0	1,789.1	7,451.5	0.00	0.00	0.00
14,500.0	90.08	180.35	7,131.5	-7,355.0	1,788.5	7,550.0	0.00	0.00	0.00
14,600.0	90.08	180.35	7,131.3	-7,455.0	1,787.9	7,648.5	0.00	0.00	0.00
14,700.0	90.08	180.35	7,131.2	-7,555.0	1,787.3	7,747.0	0.00	0.00	0.00
14,800.0	90.08	180.35	7,131.0	-7,655.0	1,786.7	7,845.5	0.00	0.00	0.00
14,900.0	90.08	180.35	7,130.9	-7,755.0	1,786.1	7,944.0	0.00	0.00	0.00
15,000.0	90.08	180.35	7,130.8	-7,855.0	1,785.5	8,042.5	0.00	0.00	0.00
15,100.0	90.08	180.35	7,130.6	-7,955.0	1,784.9	8,141.0	0.00	0.00	0.00
15,200.0	90.08	180.35	7,130.5	-8,055.0	1,784.3	8,239.5	0.00	0.00	0.00
15,300.0	90.08	180.35	7,130.3	-8,155.0	1,783.7	8,338.0	0.00	0.00	0.00
15,400.0	90.08	180.35	7,130.2	-8,254.9	1,783.1	8,436.5	0.00	0.00	0.00

<b>Database:</b>	US_EDM	<b>Local Co-ordinate Reference:</b>	Well Wilkinson K-12HC
<b>Company:</b>	Bayswater Exploration & Production, LLC	<b>TVD Reference:</b>	WELL @ 4796.0ft (RKB - 22')
<b>Project:</b>	SEC.1-T6N-R65W	<b>MD Reference:</b>	WELL @ 4796.0ft (RKB - 22')
<b>Site:</b>	Wilkinson 1-P Pad Sec.1-T6N-R65W	<b>North Reference:</b>	True
<b>Well:</b>	Wilkinson K-12HC	<b>Survey Calculation Method:</b>	Minimum Curvature
<b>Wellbore:</b>	Wellbore #1		
<b>Design:</b>	Plan #2 (10-18-16)		

Planned Survey										
Measured Depth (ft)	Inclination (°)	Azimuth (°)	Vertical Depth (ft)	+N/-S (ft)	+E/-W (ft)	Vertical Section (ft)	Dogleg Rate (°/100usft)	Build Rate (°/100usft)	Turn Rate (°/100usft)	
15,500.0	90.08	180.35	7,130.0	-8,354.9	1,782.5	8,535.1	0.00	0.00	0.00	
15,600.0	90.08	180.35	7,129.9	-8,454.9	1,781.9	8,633.6	0.00	0.00	0.00	
15,700.0	90.08	180.35	7,129.8	-8,554.9	1,781.3	8,732.1	0.00	0.00	0.00	
15,800.0	90.08	180.35	7,129.6	-8,654.9	1,780.7	8,830.6	0.00	0.00	0.00	
15,900.0	90.08	180.35	7,129.5	-8,754.9	1,780.1	8,929.1	0.00	0.00	0.00	
16,000.0	90.08	180.35	7,129.3	-8,854.9	1,779.5	9,027.6	0.00	0.00	0.00	
16,100.0	90.08	180.35	7,129.2	-8,954.9	1,778.9	9,126.1	0.00	0.00	0.00	
16,200.0	90.08	180.35	7,129.0	-9,054.9	1,778.2	9,224.6	0.00	0.00	0.00	
16,300.0	90.08	180.35	7,128.9	-9,154.9	1,777.6	9,323.1	0.00	0.00	0.00	
16,400.0	90.08	180.35	7,128.8	-9,254.9	1,777.0	9,421.6	0.00	0.00	0.00	
16,500.0	90.08	180.35	7,128.6	-9,354.9	1,776.4	9,520.1	0.00	0.00	0.00	
16,600.0	90.08	180.35	7,128.5	-9,454.9	1,775.8	9,618.6	0.00	0.00	0.00	
16,700.0	90.08	180.35	7,128.3	-9,554.9	1,775.2	9,717.1	0.00	0.00	0.00	
16,800.0	90.08	180.35	7,128.2	-9,654.9	1,774.6	9,815.6	0.00	0.00	0.00	
16,900.0	90.08	180.35	7,128.0	-9,754.9	1,774.0	9,914.1	0.00	0.00	0.00	
17,000.0	90.08	180.35	7,127.9	-9,854.9	1,773.4	10,012.6	0.00	0.00	0.00	
17,100.0	90.08	180.35	7,127.8	-9,954.9	1,772.8	10,111.1	0.00	0.00	0.00	
17,200.0	90.08	180.35	7,127.6	-10,054.9	1,772.2	10,209.6	0.00	0.00	0.00	
17,300.0	90.08	180.35	7,127.5	-10,154.9	1,771.6	10,308.1	0.00	0.00	0.00	
17,400.0	90.08	180.35	7,127.3	-10,254.9	1,771.0	10,406.6	0.00	0.00	0.00	
17,500.0	90.08	180.35	7,127.2	-10,354.9	1,770.4	10,505.1	0.00	0.00	0.00	
17,600.0	90.08	180.35	7,127.0	-10,454.9	1,769.8	10,603.6	0.00	0.00	0.00	
17,634.5	90.08	180.35	7,127.0	-10,489.4	1,769.6	10,637.6	0.00	0.00	0.00	
TD at 17634.5										

Design Targets										
Target Name	Dip Angle (°)	Dip Dir. (°)	TVD (ft)	+N/-S (ft)	+E/-W (ft)	Northing (usft)	Easting (usft)	Latitude	Longitude	
- hit/miss target										
- Shape										
SHL 316'FSL, 450'FWL, - plan hits target center - Point	0.00	0.00	1.0	0.0	0.0	1,429,421.89	3,244,953.87	40.508824	-104.619057	
BHL 470'FSL, 2285'FWL - plan hits target center - Point	0.00	0.00	7,127.0	-10,489.4	1,769.6	1,418,950.99	3,246,827.50	40.480032	-104.612696	
LPL 310'FNL, 2285'FWL - plan hits target center - Point	0.00	0.00	7,141.0	-672.5	1,828.9	1,428,767.66	3,246,789.33	40.506978	-104.612480	

Casing Points					
Measured Depth (ft)	Vertical Depth (ft)	Name	Casing Diameter (")	Hole Diameter (")	
7,817.4	7,141.0	7"	7	7-1/2	

<b>Database:</b>	US_EDM	<b>Local Co-ordinate Reference:</b>	Well Wilkinson K-12HC
<b>Company:</b>	Bayswater Exploration & Production, LLC	<b>TVD Reference:</b>	WELL @ 4796.0ft (RKB - 22')
<b>Project:</b>	SEC.1-T6N-R65W	<b>MD Reference:</b>	WELL @ 4796.0ft (RKB - 22')
<b>Site:</b>	Wilkinson 1-P Pad Sec.1-T6N-R65W	<b>North Reference:</b>	True
<b>Well:</b>	Wilkinson K-12HC	<b>Survey Calculation Method:</b>	Minimum Curvature
<b>Wellbore:</b>	Wellbore #1		
<b>Design:</b>	Plan #2 (10-18-16)		

Plan Annotations				
Measured Depth (ft)	Vertical Depth (ft)	Local Coordinates		Comment
		+N/-S (ft)	+E/-W (ft)	
400.0	400.0	0.0	0.0	KOP - Start Build 1.00
2,135.8	2,109.4	7.4	260.8	Start 4548.2 hold at 2135.8 MD
6,684.0	6,450.4	46.0	1,617.2	Start DLS 8.00 TFO 91.86
7,817.4	7,141.0	-672.5	1,828.9	Start 9817.1 hold at 7817.4 MD
17,634.5	7,127.0	-10,489.4	1,769.6	TD at 17634.5