

WILKINSON J-12HN WELL LOCATION CERTIFICATE

NW COR. SEC. 1
3/4" ALUM CAP
PLS 4392, 1994

S 88°46'00" E 2648.99'

S 88°45'49" E 2649.00'

N 1/4 COR. SEC. 1
3/4" ALUM. CAP
PLS 4392, 1994

NE COR. SEC. 1
3/4" ALUM. CAP
PLS 10855, 1993

No. 2

No. 2

NOTES:
BH LOCATION PROVIDED BY CLIENT.
LAND SURFACE USE-IMPROVED PASTURE
EXISTING WELL WILKINSON 1-33 IS 517' NE
AT 625' FSL & 855' FWL
SEE ATTACHED MAP FOR ADDITIONAL
IMPROVEMENTS WITHIN 500'.

PDOP= 2.7
GPS OPERATOR: DANIEL REXFORD

No. 1

No. 1

W 1/4 COR. SEC. 1
2 1/2" ALUM. CAP
PLS 24307, 2012

E 1/4 COR. SEC. 1
2 1/2" ALUM. CAP
PLS 12374

SURFACE LOCATION
GROUND ELEVATION= 4774'
NAD83
LATITUDE= 40.508825°
LONGITUDE= 104.619111°

LANDING POINT LOCATION
NAD83
LATITUDE= 40.507699°
LONGITUDE= 104.612846°

BOTTOM HOLE LOCATION
NAD83
LATITUDE= 40.480034°
LONGITUDE= 104.613073°

LP- 50' FNL }
2180' FWL } SEC. 12
BHL- 470' FSL }
2180' FWL } SEC. 13

SW COR. SEC. 1
2 1/2" ALUM CAP
ILLEGIBLE

S 1/4 COR. SEC. 1
2 1/2" ALUM. CAP
PLS 12374, 1993

SE COR. SEC. 1
3/4" ALUM. CAP
PLS 7242, 1998

LEGEND

- = EXISTING MONUMENT ◆ = BOTTOM HOLE
○ = CALCULATED POSITION ▲ = LANDING POINT
● = PROPOSED WELL LP = LANDING POINT
◆ = EXISTING WELL BHL = BOTTOM HOLE

NOTES:

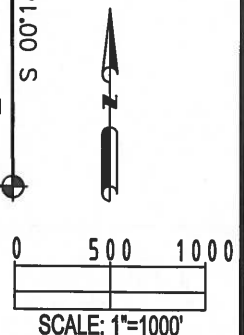
1. THIS FIELD SURVEY CONFORMS TO THE MINIMUM STANDARDS SET BY THE C.O.G.C.C., RULE NO. 215
2. BEARINGS ARE BASED ON THE ASSUMPTION THAT THE SOUTH LINE OF THE SOUTHEAST QUARTER OF SECTION 1, BEARS N89°07'31" W BETWEEN THE MONUMENTS SHOWN HEREON.
3. GRID DISTANCES ARE SHOWN, AS GPS MEASURED IN THE FIELD, WITH TIES TO WELLS MEASURED PERPENDICULAR TO SECTION LINES. TO GET GROUND DISTANCES MULTIPLY THE SHOWN DISTANCE BY 1.000257288.
4. ELEVATIONS SHOWN ARE NAVD 88, AS DERIVED BY GPS OBSERVATIONS.
5. FIELD VERIFICATION OF MONUMENTS COMPLETED WITHIN 1 YEAR OF SIGNATURE DATE.

NOTICE: ACCORDING TO COLORADO LAW YOU MUST COMMENCE ANY LEGAL ACTION BASED UPON ANY DEFECT IN THIS SURVEY WITHIN THREE YEARS AFTER YOU FIRST DISCOVER SUCH DEFECT. IN NO EVENT MAY ANY ACTION BASED UPON ANY DEFECT IN THIS SURVEY BE COMMENCED MORE THAN TEN YEARS FROM THIS SAID DATE OF THIS CERTIFICATION SHOWN HEREON.



**WELL WILKINSON J-12HN TO BE
LOCATED 316' FSL AND 435' FWL**

I, JACOB S. FRISCH, A LICENSED PROFESSIONAL LAND SURVEYOR IN THE STATE OF COLORADO DO HEREBY CERTIFY TO **BAYSWATER EXPLORATION & PRODUCTION, LLC**, THAT THE SURVEY AND WELL LOCATION CERTIFICATE SHOWN HEREON WERE DONE BY ME OR UNDER MY DIRECT SUPERVISION AND THAT THE DRAWING SHOWN HEREON ACCURATELY DEPICTS THE PROPOSED LOCATION OF THE WELL. THIS CERTIFICATE DOES NOT REPRESENT A LAND SURVEY PLAT OR IMPROVEMENT SURVEY PLAT AS DEFINED BY C.R.S. 38-51-102 AND CANNOT BE RELIED UPON TO DETERMINE OWNERSHIP.

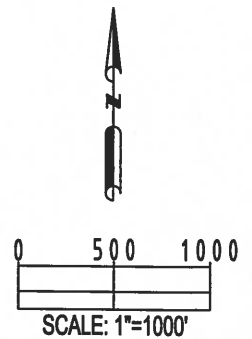
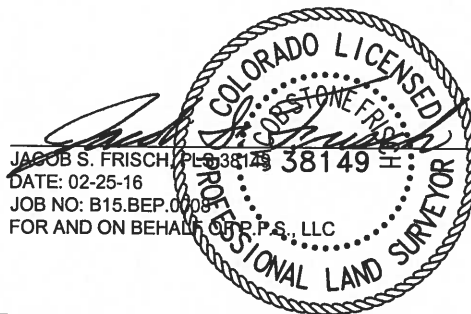
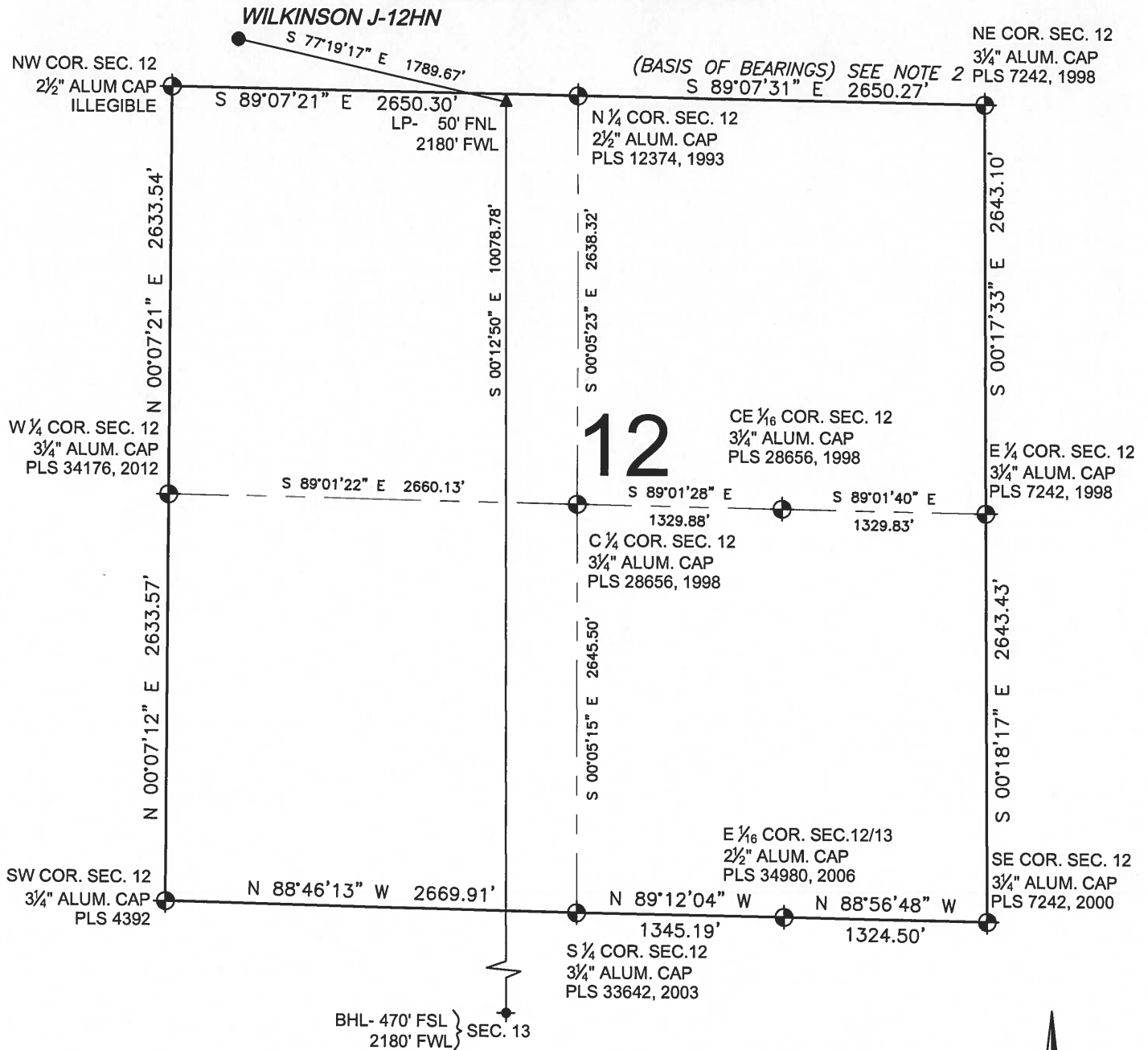
JACOB S. FRISCH PLS 38149
DATE: 02-25-16
JOB NO: B15.BEP.0002
FOR AND ON BEHALF OF P.T.S., LLC



SHEET 1 OF 3

PREPARED BY:  Petroleum Field Services, LLC 7535 Hilltop Circle Denver, CO 80221	FIELD DATE: 06-23-15 DRAWING DATE: 02-24-16 BY: KAD CHECKED BY: TJN	WELL NAME: WILKINSON J-12HN SURFACE LOCATION: SW 1/4 SW 1/4 SEC. 1, T6N, R65W, 6TH P.M. WELD COUNTY, COLORADO	PREPARED FOR:  BAYSWATER EXPLORATION AND PRODUCTION, LLC
--------------------------------------------------------------------------------------------------------------------------------------------------------------------------------	------------------------------------------------------------------------------------------	---------------------------------------------------------------------------------------------------------------------------	-----------------------------------------------------------------------------------------------------------------------------------------------------

WILKINSON J-12HN WELL LOCATION CERTIFICATE



SHEET 2 OF 3

PREPARED BY:



FIELD DATE:
06-23-15

DRAWING DATE:
02-24-16

BY:
KAD

CHECKED BY:
TJN

WELL NAME:

WILKINSON J-12HN

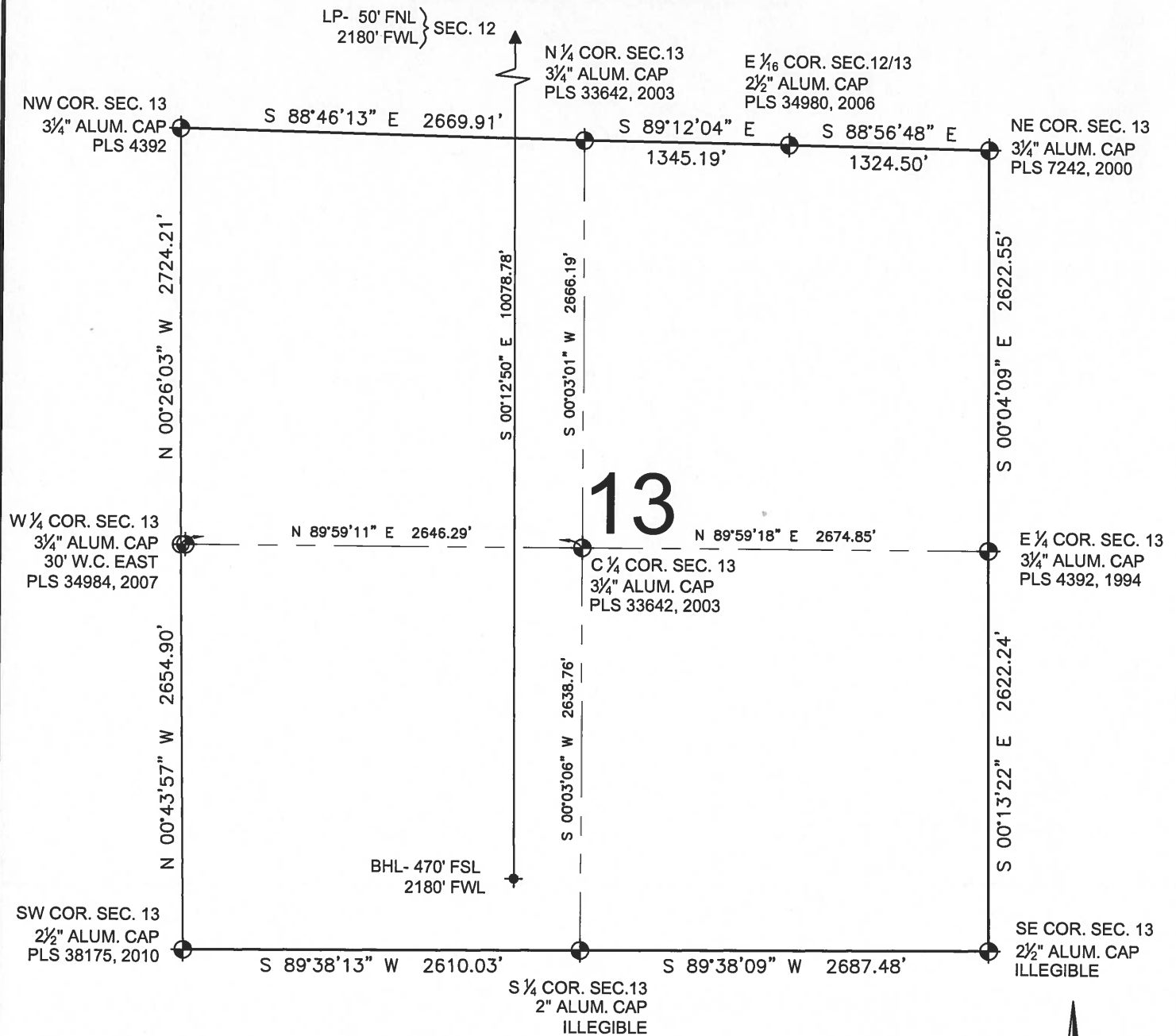
SURFACE LOCATION:

SW 1/4 SW 1/4 SEC. 1, T6N, R65W, 6TH P.M.
WELD COUNTY, COLORADO

PREPARED FOR:

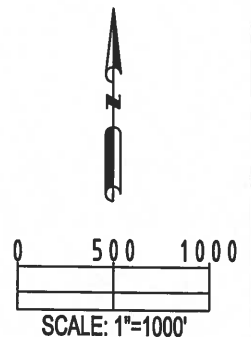
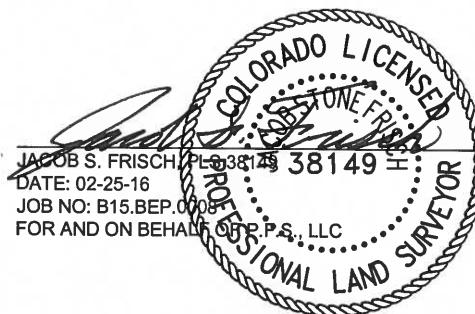




WILKINSON J-12HN WELL LOCATION CERTIFICATE



LEGEND

- ⊕ = EXISTING MONUMENT
- = CALCULATED POSITION
- = PROPOSED WELL
- ◆ = EXISTING WELL
- ⬮ = BOTTOM HOLE
- ▲ = LANDING POINT
- LP = LANDING POINT
- BHL = BOTTOM HOLE



PREPARED BY:  Petroleum Field Services, LLC 7535 Hilltop Circle Denver, CO 80221	FIELD DATE: 06-23-15 DRAWING DATE: 02-24-16 BY: KAD CHECKED BY: TJN	WELL NAME: WILKINSON J-12HN SURFACE LOCATION: SW 1/4 SW 1/4 SEC. 1, T6N, R65W, 6TH P.M. WELD COUNTY, COLORADO	SHEET 3 OF 3 PREPARED FOR:  BAYSWATER EXPLORATION AND PRODUCTION, LLC
--------------------------------------------------------------------------------------------------------------------------------------------------------------------------------	------------------------------------------------------------------------------------------	---------------------------------------------------------------------------------------------------------------------------	---------------------------------------------------------------------------------------------------------------------------------------------------------------------