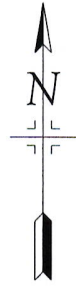


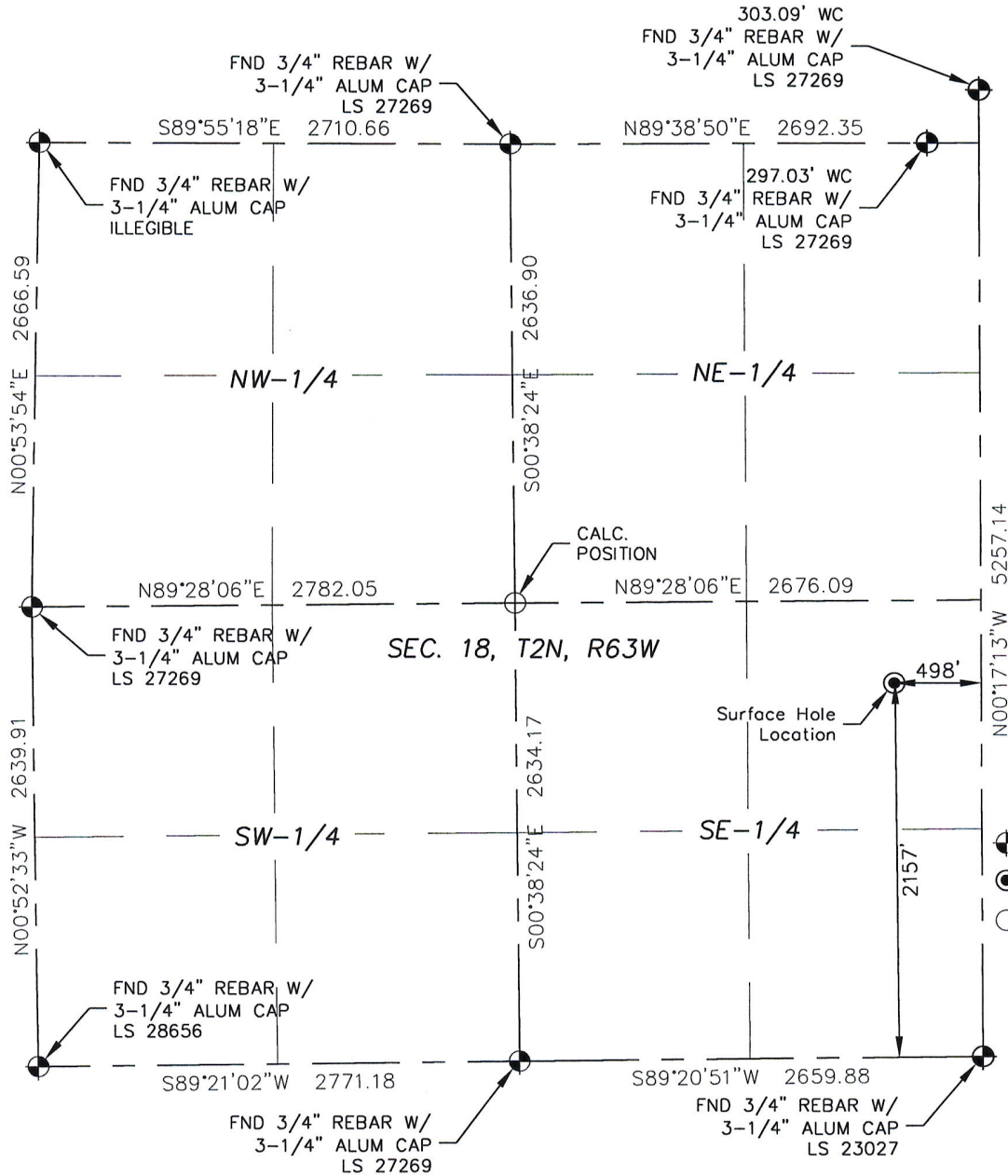
# WELL LOCATION CERTIFICATE

EWS-4

LOCATED IN SECTION 18, T2N, R63W  
COUNTY OF WELD, COLORADO



0 500 1000  
SCALE: 1" = 1000'



## Legend

- Monument as described
- Surface Hole Location
- Calculated position

CLIENT: EXPEDITION WATER SOLUTIONS						
INSTRUMENT OPR: DOUG BERLING				SURVEY DATE 11/21/2016		SURFACE USE: RANGELAND
SHL FOOTAGE	SHL LAT*	SHL LONG*	SHL PDOP	SHL ELEV	SHL 1/4 1/4	SHL S-T-R
2157	FSL	498	FEL	40.13705	-104.47264	1.45
						4877
					NE SE	18-2-63

## NEAREST CULTURAL ITEMS

BUILDING	2120' SW
BUILDING UNIT	5280'+
HIGH OCCUPANCY BLDG UNIT	5280'+
DESIGNATED OUTSIDE ACTIVITY AREA	5280'+
PUBLIC ROAD	1768' NW
ABOVE GROUND UTILITY	2203' SE
RAILROAD	2367' SE
PROPERTY LINE	171'S/1700'NW

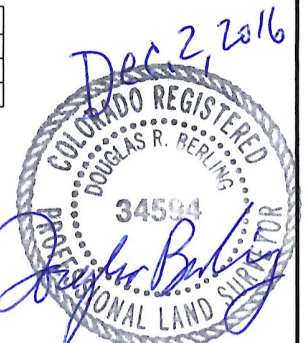
1. Bearings shown are Grid Bearings of the Colorado State Plane Coordinate system, North Zone, NAD 1983. Lineal units are U.S. Survey feet modified to ground measurements.

2. Elevations are based on Geoid 12A, NAVD 1988.

3. Latitude and Longitude shown are based on NAD 1983 datum.

4. This map does not represent a boundary survey.

5. Distances to section lines are measured at 90 degrees to said section lines.



Douglas R. Berling PLS 34594  
11536 Community Center Dr. #87  
Northglenn, CO 80233

1667well.dwg Dec. 2, 2016 DRB