

1625 Broadway  
Suite 2000  
Denver, CO 80202  
  
Tel: 303.228.4000  
Fax: 303.228.4280  
www.nobleenergyinc.com



November 22, 2016

Colorado Oil and Gas Conservation Commission  
The Chancery Building  
1120 Lincoln Street, Suite 801  
Denver, CO 80203  
Attn: Mr. Matt Lepore, Director

RE: Wells Ranch State AF09-618, Doc # 400954838  
Section 8: NE/4SE/4 Township 5 North, Range 62 West, 6th P.M.  
Weld County, Colorado

Dear Director:

Noble Energy, Inc. ("NEI") is planning to drill the captioned boundary well in accordance with the provisions of COGCC Rule 318A.e.

NEI's proposed wellbore spacing unit consists of the SE/4SE/4 Section 8, S/2S/2 Section 9, S/2S/2 Section 10, T5N, R62W, creating a 360-acre wellbore spacing unit for the Niobrara formation. NEI is the only owner within the proposed wellbore spacing unit, therefore NEI hereby attests that no notice letters are required under COGCC Rule 318Ae.(5).

Enclosed are copies of the following documents to assist you in your review and approval of NEI's proposed APD for the captioned well:

- Map & plat illustrating proposed wellbore spacing unit.

Thank you for your attention to the enclosed. NEI respectfully requests that the COGCC review the enclosed information and approve the Application for Permit to Drill the captioned well.

Sincerely,

*Susan Miller*

Susan Miller  
Regulatory Analyst  
Noble Energy Inc.

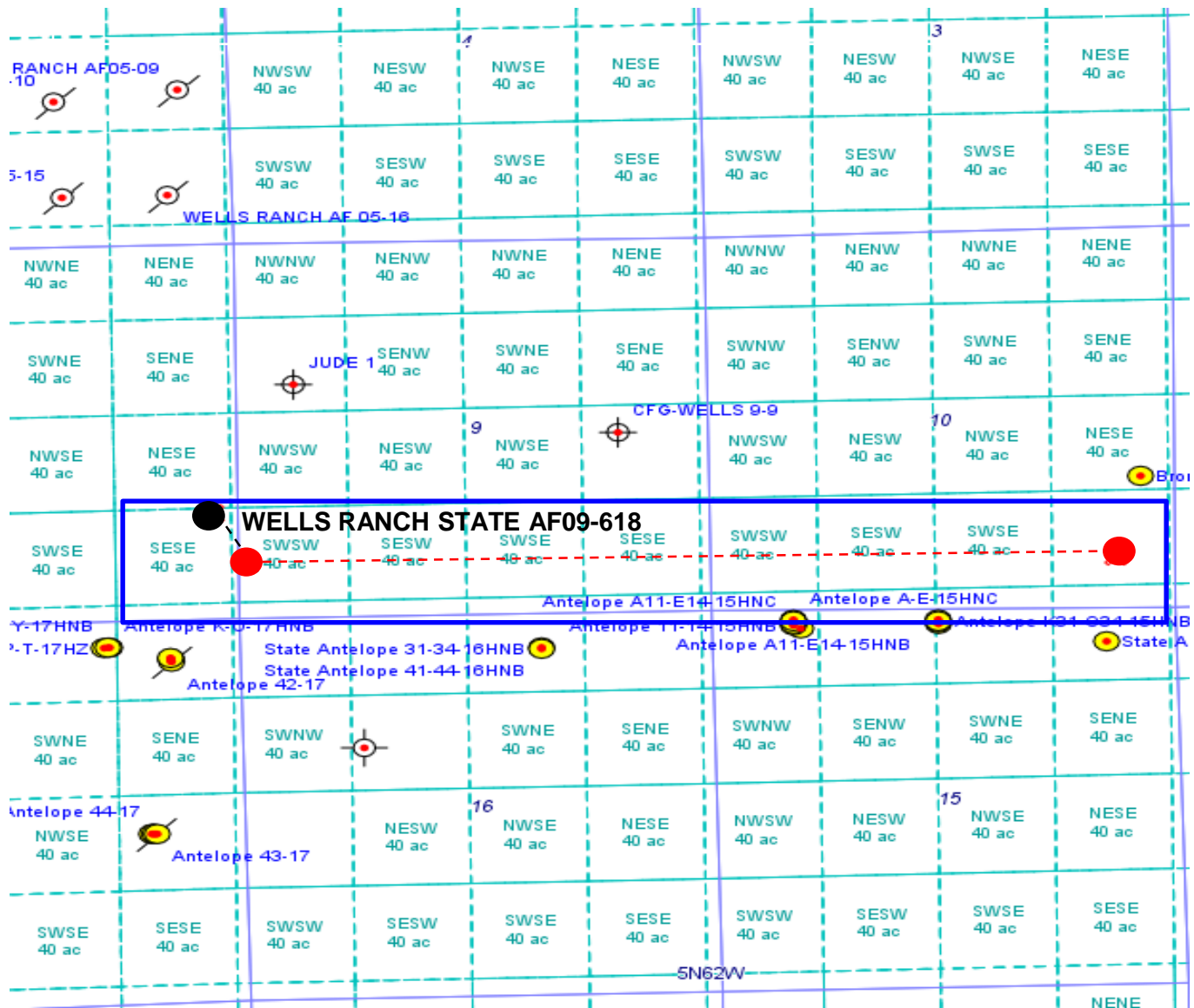
# Wells Ranch State AF09-618

Proposed Spacing Unit – Noble Energy, Inc

SE/4SE/4 Section 8, Township 5 North, Range 62 West

S/2S/2 Section 9, Township 5 North, Range 62 West

S/2S/2 Section 10, Township 5 North, Range 62 West



Legend



Proposed 360.00± acre spacing unit



Bottom Hole Location

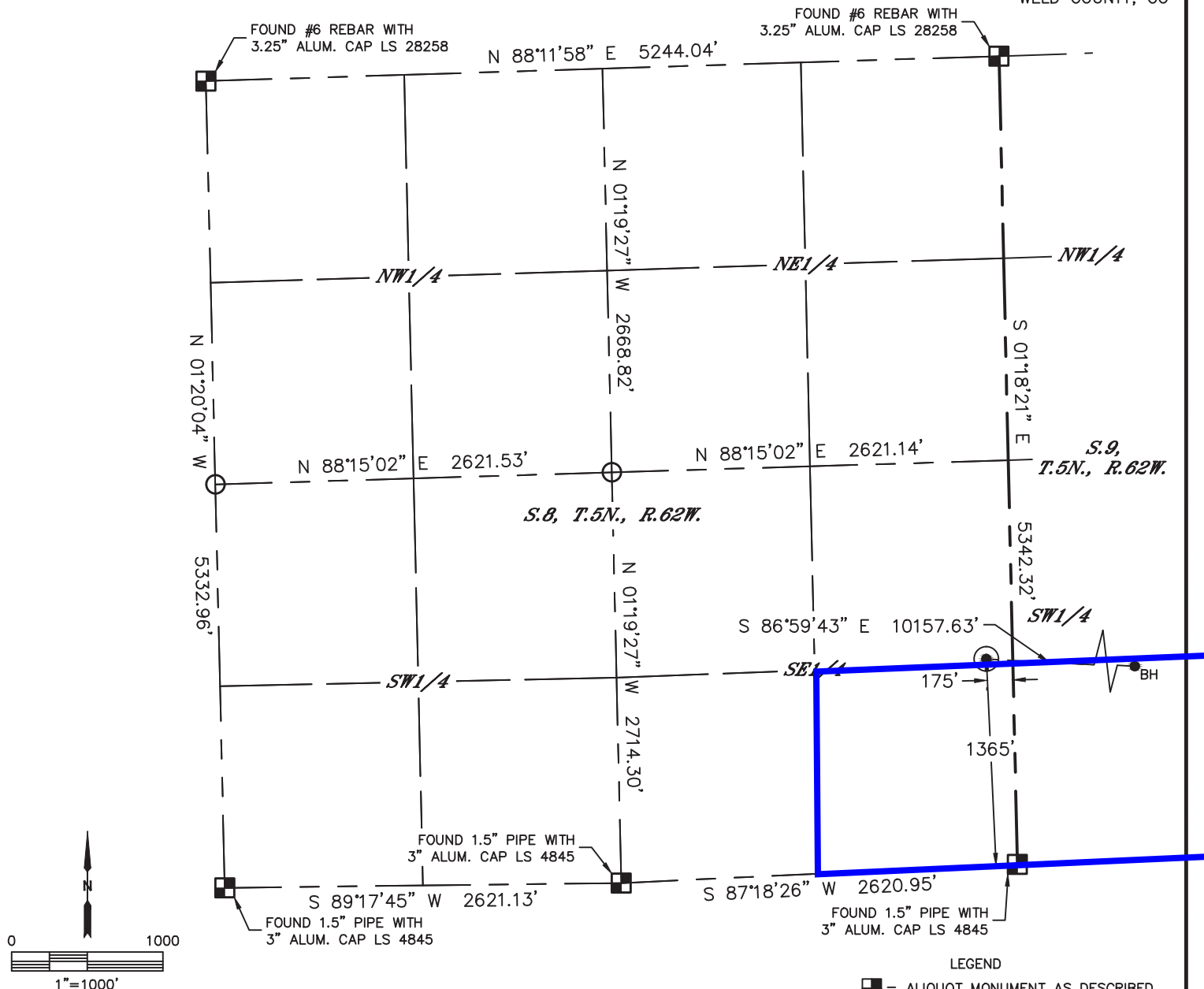


Lat40°, Inc. 6250 W. 10th Street, Unit 2, Greeley, CO 970-515-5294

# WELL LOCATION CERTIFICATE

WELLS RANCH STATE AF09-618

SECTION: 8  
TOWNSHIP: 5N  
RANGE: 62W  
6TH. P.M.  
WELD COUNTY, CO



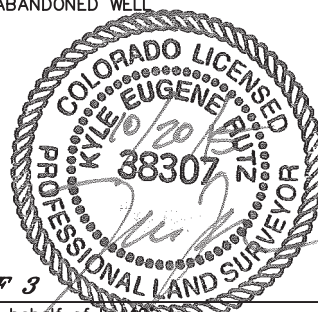
|                                   |     |     |          |          |            |                        |          |                        |           |
|-----------------------------------|-----|-----|----------|----------|------------|------------------------|----------|------------------------|-----------|
| CLIENT: NOBLE ENERGY, INC.        |     |     |          |          |            | LANDMAN: GREG WILSON   |          |                        |           |
| INSTRUMENT OPERATOR: CHASE MILLER |     |     |          |          |            | SURVEY DATE: 9/17/2015 |          | SURFACE USE: RANGELAND |           |
| SHL FOOTAGE                       |     |     | SHL LAT° |          | SHL LONG ° | SHL PDOP               | SHL ELEV | SHL 1/4/1/4            | SHL S-T-R |
| 1365                              | FSL | 175 | FEL      | 40.41060 | -104.33831 | 2.2                    | 4713     | NESE                   | 8-5-62    |

| BHL FOOTAGE |     |     |     | BHL LAT ° | BHL LONG ° | BHL S-T-R |
|-------------|-----|-----|-----|-----------|------------|-----------|
| 535         | FSL | 535 | FEL | 40.40876  | -104.30192 | 10-5-62   |

| NEAREST EXISTING WELL IN SHL 1/4/1/4 |         |
|--------------------------------------|---------|
| EX. WELL                             | N/A     |
| NEAREST CULTURAL ITEMS               |         |
| BUILDING                             | 5280'+  |
| BUILDING UNIT                        | 5280'+  |
| HIGH OCCUPANCY BUILDING UNIT         | 5280'+  |
| DESIGNATED OUTSIDE ACTIVITY AREA     | 5280'+  |
| PUBLIC ROAD                          | 5280'+  |
| ABOVE GROUND UTILITY                 | ±1414'S |
| RAILROAD                             | 5280'+  |
| PROPERTY LINE                        | ±175'E  |

NOTE:  
1) Bearings shown are Grid Bearings of the Colorado State Plane Coordinate System, North Zone, North American Datum 1983. The lineal dimensions as contained herein are based upon the "U.S. Survey Foot."  
2) Distances to section lines measured at 90 degrees from said section lines.  
3) Ground elevations are based on an observed GPS elevation (NAVD 1988 DATUM).  
4) Latitude and Longitude shown are (NAD 83 DATUM).  
5) IMPROVEMENTS: See LOCATION DRAWING for all visible improvements within 500' of oil and gas location.  
6) This map does not represent a boundary survey.

- LEGEND
- = ALIQUOT MONUMENT AS DESCRIBED
  - = CALCULATED POSITION
  - = SURFACE HOLE LOCATION (SHL)
  - ▲ = ENTRY POINT LOCATION (EP)
  - BH = BOTTOM HOLE LOCATION (BHL)
  - ⊕ = EXISTING WELL
  - ⊙ = ABANDONED WELL



SHEET 1 OF 3

Kyle E. Rutz—On behalf of Lat40, Inc.  
Colorado Licensed Professional Land Surveyor No. 38307  
DATE: 10/20/2015  
PROJECT#: 2015127

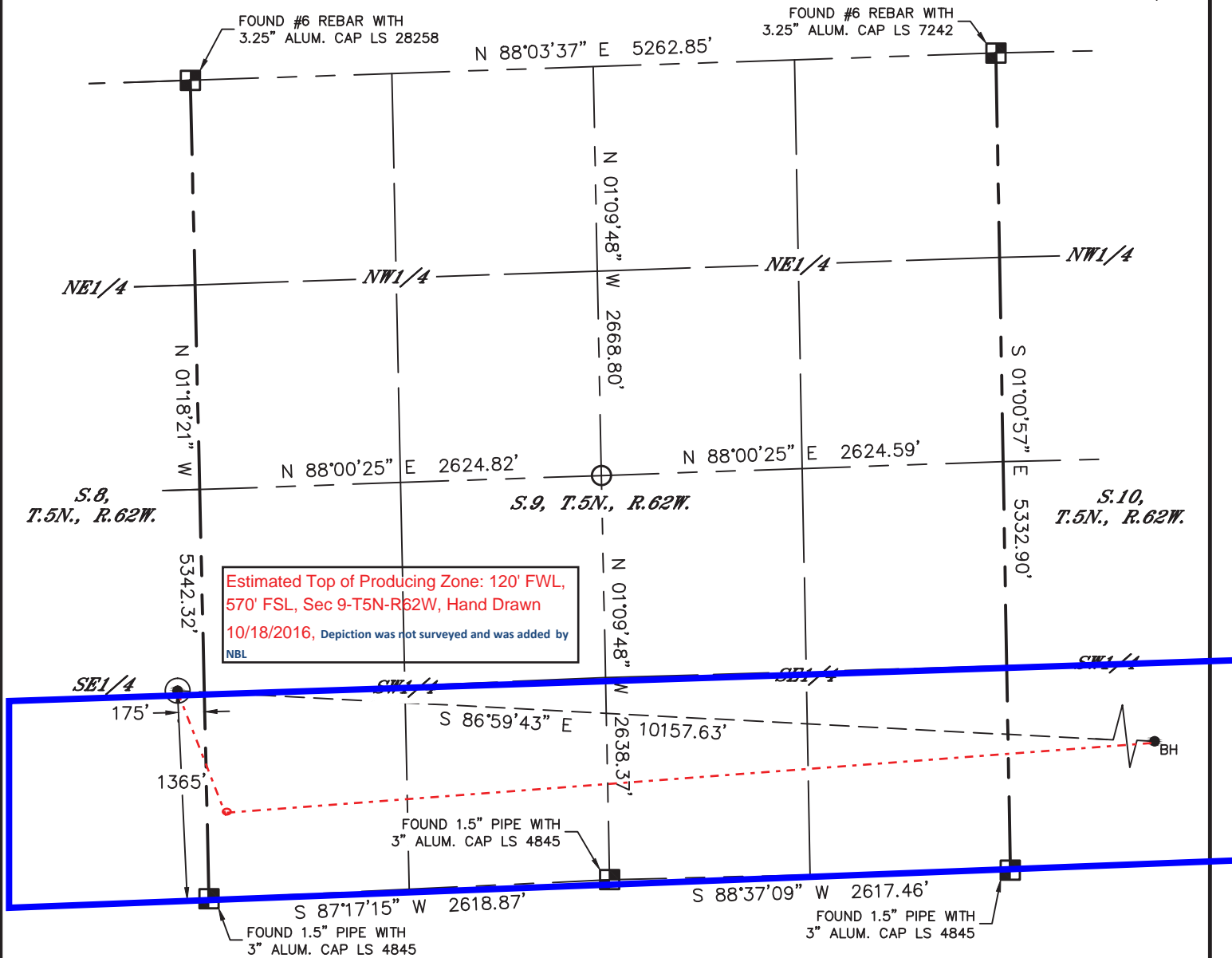


Lat40°, Inc. 6250 W. 10th Street, Unit 2, Greeley, CO 970-515-5294

# WELL LOCATION CERTIFICATE

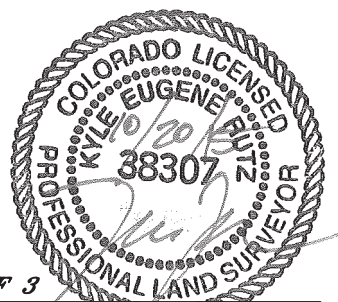
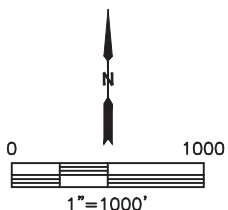
WELLS RANCH STATE AF09-618

SECTION: 8  
TOWNSHIP: 5N  
RANGE: 62W  
6TH. P.M.  
WELD COUNTY, CO



## LEGEND

- = ALIQUOT MONUMENT AS DESCRIBED
- = CALCULATED POSITION
- = SURFACE HOLE LOCATION (SHL)
- ▲ = ENTRY POINT LOCATION (EP)
- <sub>BH</sub> = BOTTOM HOLE LOCATION (BHL)
- ⊕ = EXISTING WELL
- ⊖ = ABANDONED WELL



SHEET 2 OF 3

Kyle E. Rutz—On behalf of Lat40, Inc.  
Colorado Licensed Professional Land Surveyor No. 38307  
DATE: 10/20/2015  
PROJECT#: 2015127

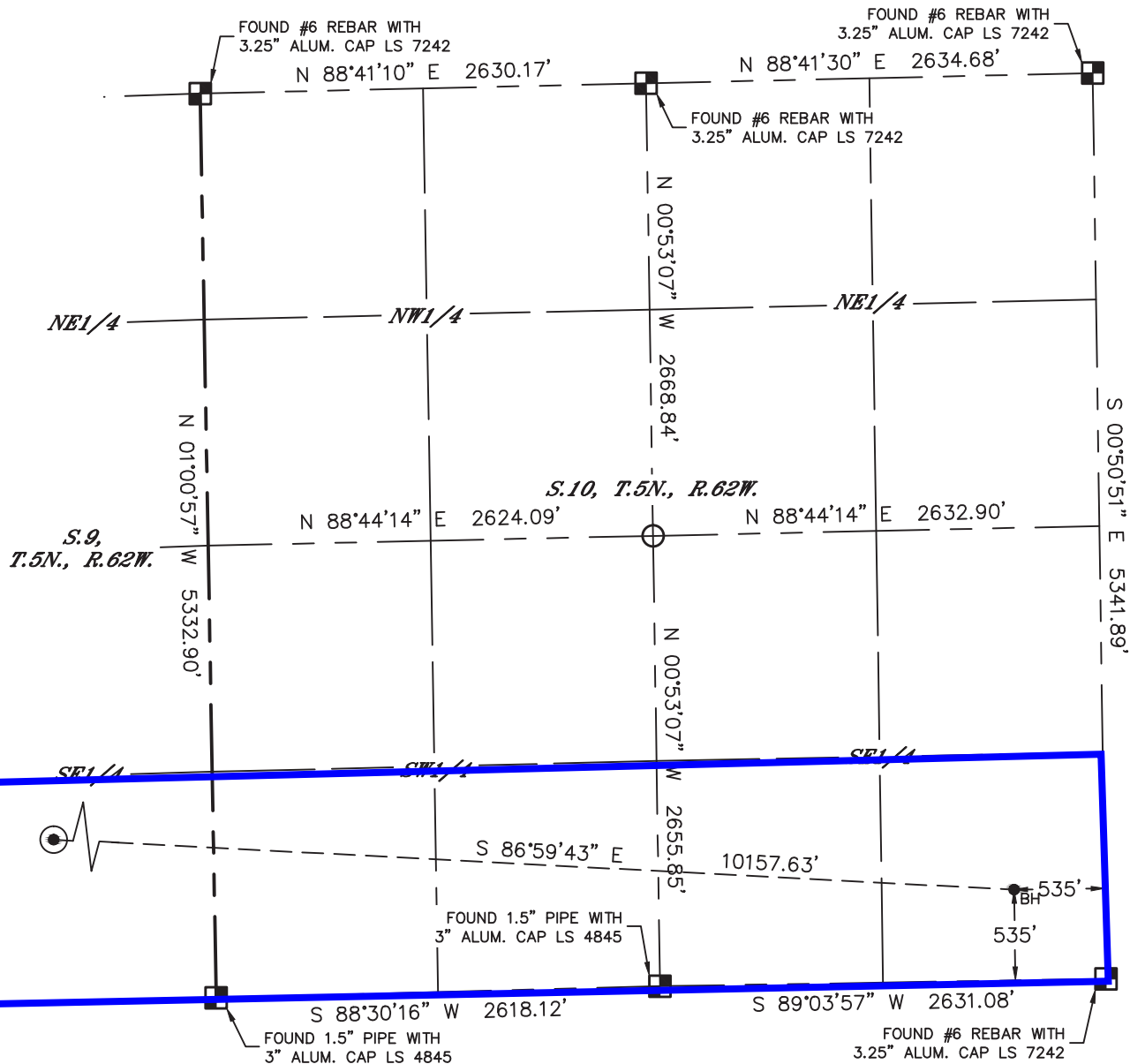


Lat40°, Inc. 6250 W. 10th Street, Unit 2, Greeley, CO 970-515-5294

# WELL LOCATION CERTIFICATE

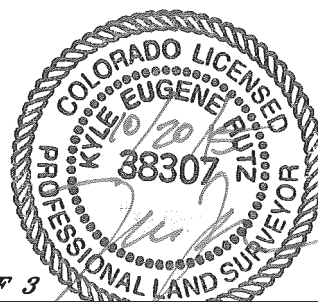
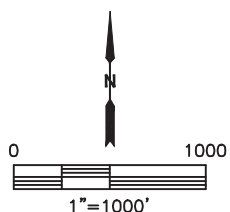
WELLS RANCH STATE AF09-618

SECTION: 8  
TOWNSHIP: 5N  
RANGE: 62W  
6TH. P.M.  
WELD COUNTY, CO



## LEGEND

- = ALIQUOT MONUMENT AS DESCRIBED
- = CALCULATED POSITION
- ⊙ = SURFACE HOLE LOCATION (SHL)
- ▲ = ENTRY POINT LOCATION (EP)
- <sub>BH</sub> = BOTTOM HOLE LOCATION (BHL)
- ⊕ = EXISTING WELL
- ⊖ = ABANDONED WELL



SHEET 3 OF 3

Kyle E. Rutz—On behalf of Lat40, Inc.  
Colorado Licensed Professional Land Surveyor No. 38307  
DATE: 10/20/2015  
PROJECT#: 2015127