

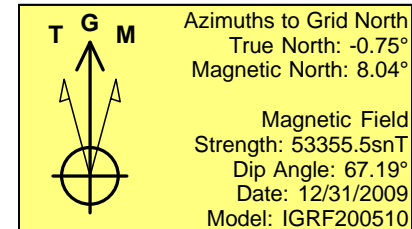
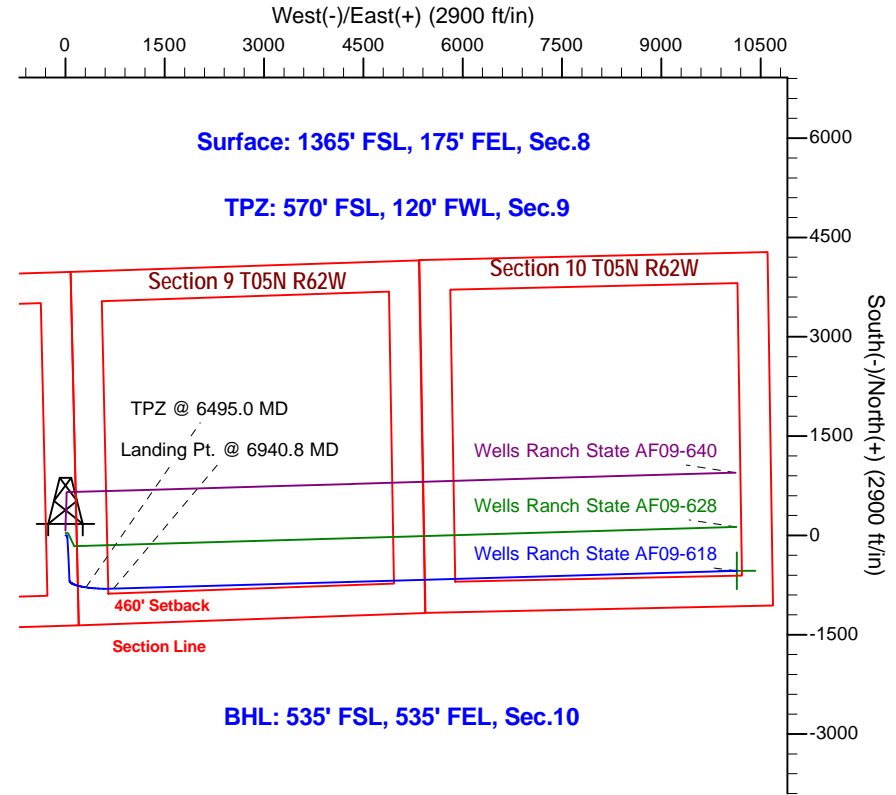
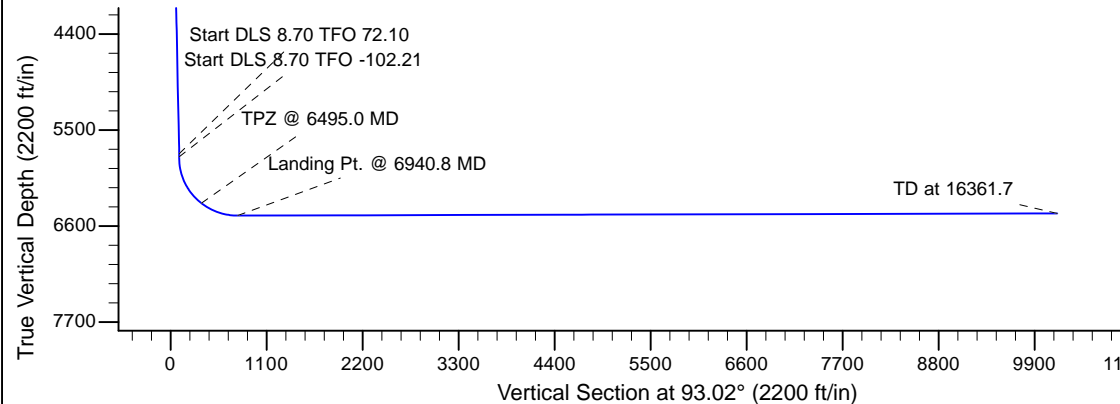
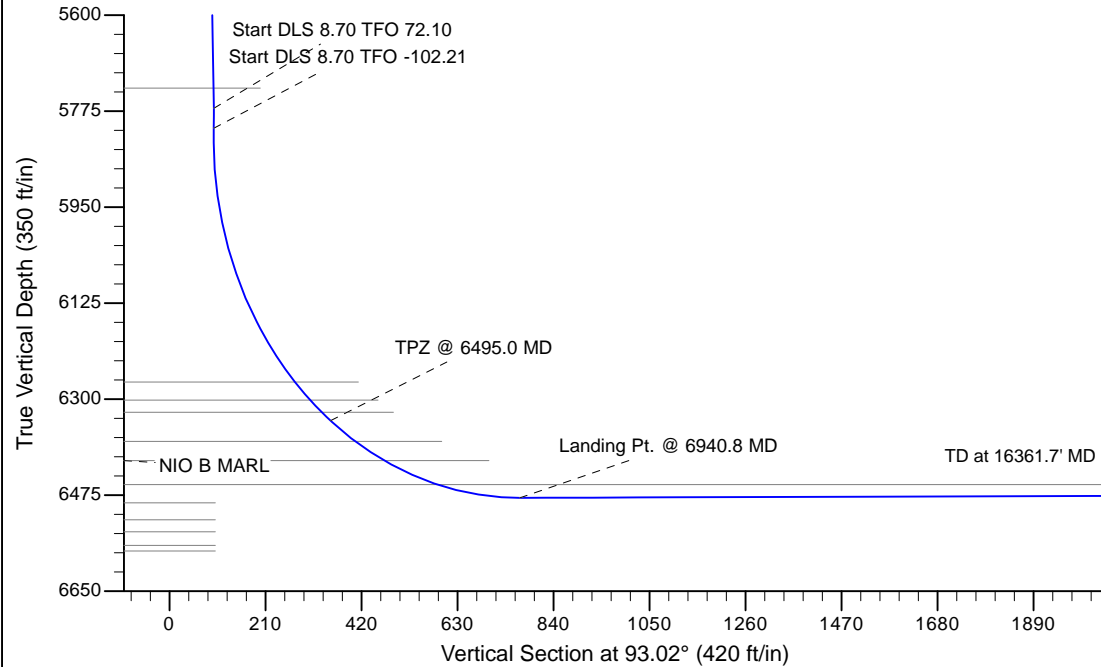
Project: Wattenberg Field  
 Site: AF (Section 8-T05N-R62W) Weld County, Co  
 Well: Wells Ranch State AF09-618  
 Wellbore: Original Drilling  
 Design: APD - Rev 1

# Northern Region Drilling - Working

Geodetic System: US State Plane 1983  
 Datum: North American Datum 1983  
 Ellipsoid: GRS 1980  
 Zone: Colorado Northern Zone  
 System Datum: Mean Sea Level

## SECTION DETAILS

Sec	MD	Inc	Azi	TVD	+N/-S	+E/-W	Dleg	TFace	VSec	Target
1	0.0	0.00	0.00	0.0	0.0	0.0	0.00	0.00	0.0	
2	1900.0	0.00	0.00	1900.0	0.0	0.0	0.00	0.00	0.0	
3	2050.0	3.00	90.00	2049.9	0.0	3.9	2.00	90.00	3.9	
4	2200.0	3.00	90.00	2199.7	0.0	11.8	0.00	0.00	11.8	
5	2786.3	11.50	177.00	2781.8	-58.6	30.2	2.00	101.60	33.3	
6	5835.7	11.50	177.00	5770.0	-665.7	62.1	0.00	0.00	97.1	
7	5872.8	12.86	190.91	5806.2	-673.4	61.5	8.70	72.10	96.9	
8	6940.8	90.15	88.36	6480.0	-805.0	725.0	8.70	-102.21	766.4	
9	16361.7	90.15	88.36	6455.4	-535.4	10142.0	0.00	0.00	10156.1	Wells Ranch State AF09-618 BHL 535'FSL, 535'FEL



WELL DETAILS: Wells Ranch State AF09-618						
Ground Level: 4713.0						
	0.0	0.0	1394540.87	3323482.85	40.410600	-104.338310
	Northing		Easting		Latitude	Longitude
0.0	0.0	1394540.87	3323482.85	40.410600	-104.338310	
Plan: APD - Rev 1 (Wells Ranch State AF09-618/Original Drilling)						
Created By: Shailey Jewell				Date: 15:45, October 17 2016		
OK to submit with 2A as per Noble Drilling						
10/17/2016 3:51						