

FINISHED GRADE ELEVATION = 8129.5'

NOTES:

- Flare stack is to be located a min. of 100' from the wellhead.
- Round corners at 50' radius or as needed.
- Contours shown at 2' intervals.
- Cut/Fill slopes 1 1/2:1 (Typ.).



UELS, LLC
Corporate Office • 85 South 200 East
Vernal, UT 84078 • (435) 789-1017

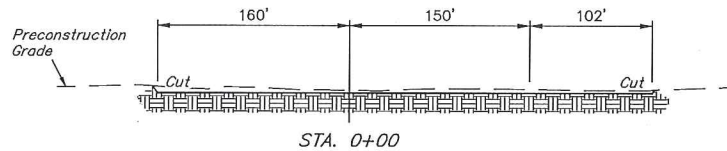
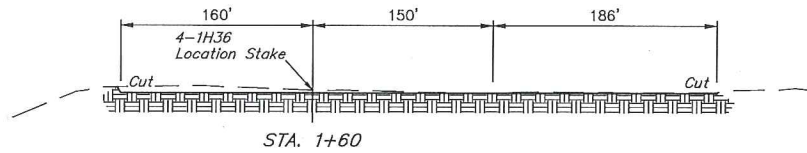
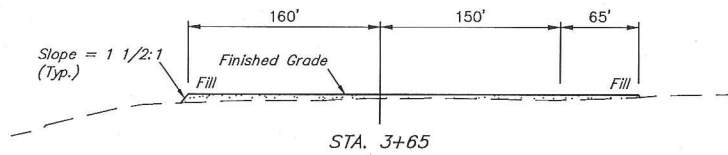
SandRidge Exploration & Production, LLC

HEBRON 12, PAD
NE 1/4 NE 1/4, SECTION 12, T7N, R81W, 6th P.M. &
NW 1/4 NW 1/4, SECTION 7, T7N, R80W, 6th P.M.
JACKSON COUNTY, COLORADO

SURVEYED BY	CHAD MEIERS, D.S.	09-01-16	SCALE
DRAWN BY	T.B.	09-08-16	1" = 60'
CONSTRUCTION LAYOUT		FIGURE #1	

X-Section
Scale
1" = 40'
1" = 100'

PRELIMINARY



APPROXIMATE EARTHWORK QUANTITIES	
(6") TOPSOIL STRIPPING	3,420 Cu. Yds.
REMAINING LOCATION	2,780 Cu. Yds.
TOTAL CUT	6,200 Cu. Yds.
FILL	2,780 Cu. Yds.
EXCESS MATERIAL	3,420 Cu. Yds.
TOPSOIL	3,420 Cu. Yds.
EXCESS UNBALANCE (After Interim Rehabilitation)	0 Cu. Yds.

APPROXIMATE SURFACE DISTURBANCE AREAS		
	DISTANCE	ACRES
WELL SITE DISTURBANCE (FENCED AREA)	NA	±4.756
TOPSOIL PILE DISTURBANCE	NA	±0.217
30' WIDE ROAD RE-ROUTE R-O-W DISTURBANCE	±441'	±0.304
TOTAL SURFACE USE AREA		±5.277

NOTES:

- Fill quantity includes 5% for compaction.
- Calculations based on 6" of topsoil stripping.
- Cut/Fill slopes 1 1/2:1 (Typ. except where noted).



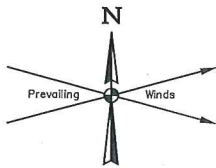
UELS, LLC
Corporate Office * 85 South 200 East
Vernal, UT 84078 * (435) 789-1017

SandRidge Exploration & Production, LLC

HEBRON 12 PAD
NE 1/4 NE 1/4, SECTION 12, T7N, R81W, 6th P.M. &
NW 1/4 NW 1/4, SECTION 7, T7N, R80W, 6th P.M.
JACKSON COUNTY, COLORADO

SURVEYED BY	CHAD MEIERS, D.S.	09-01-16	SCALE
DRAWN BY	T.B.	09-08-16	AS SHOWN

CONSTRUCTION LAYOUT CROSS SECTIONS **FIGURE #2**

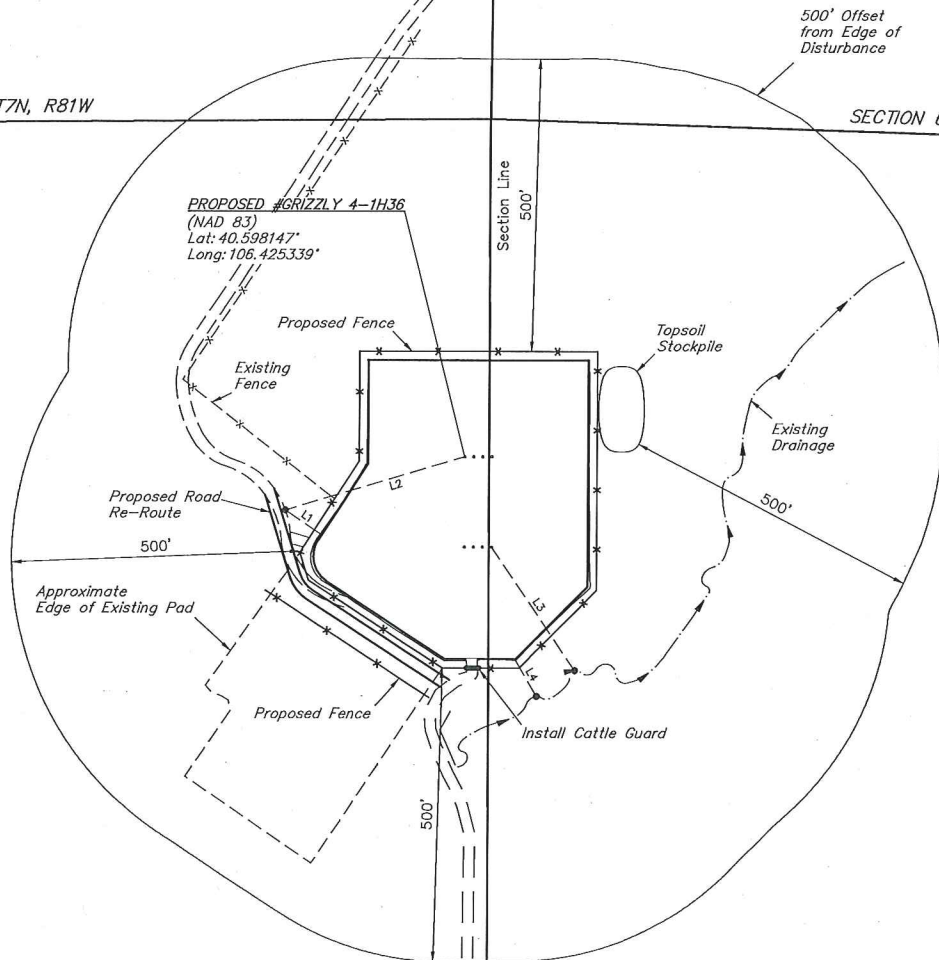


SECTION 1, T7N, R81W

SECTION 6, T7N, R80W

Section Line

PROPOSED #GRIZZLY 4-1H36
(NAD 83)
Lat: 40.598147°
Long: 106.425339°



LINE TABLE		
LINE	DIRECTION	LENGTH
L1	N55°50'03"W	70.45'
L2	S73°22'16"W	311.18'
L3	S34°08'48"E	247.65'
L4	S30°28'33"E	69.50'



SandRidge Exploration & Production, LLC

HEBRON 12 PAD
NE 1/4 NE 1/4, SECTION 12, T7N, R81W, 6th P.M. &
NW 1/4 NW 1/4, SECTION 7, T7N, R80W, 6th P.M.
JACKSON COUNTY, COLORADO

SURVEYED BY	CHAD MEIERS, D.S.	09-01-16	SCALE
DRAWN BY	T.B.	09-08-16	1" = 200'
LOCATION DRAWING		FIGURE #5	



UEL, LLC
Corporate Office * 85 South 200 East
Vernal, UT 84078 * (435) 789-1017