

Kyle E. Rutz—On behalf of LA40, Inc.  
Colorado Licensed Professional Land Surveyor No. 38307  
DATE: 10/20/2015  
PROJECT#: 2015127

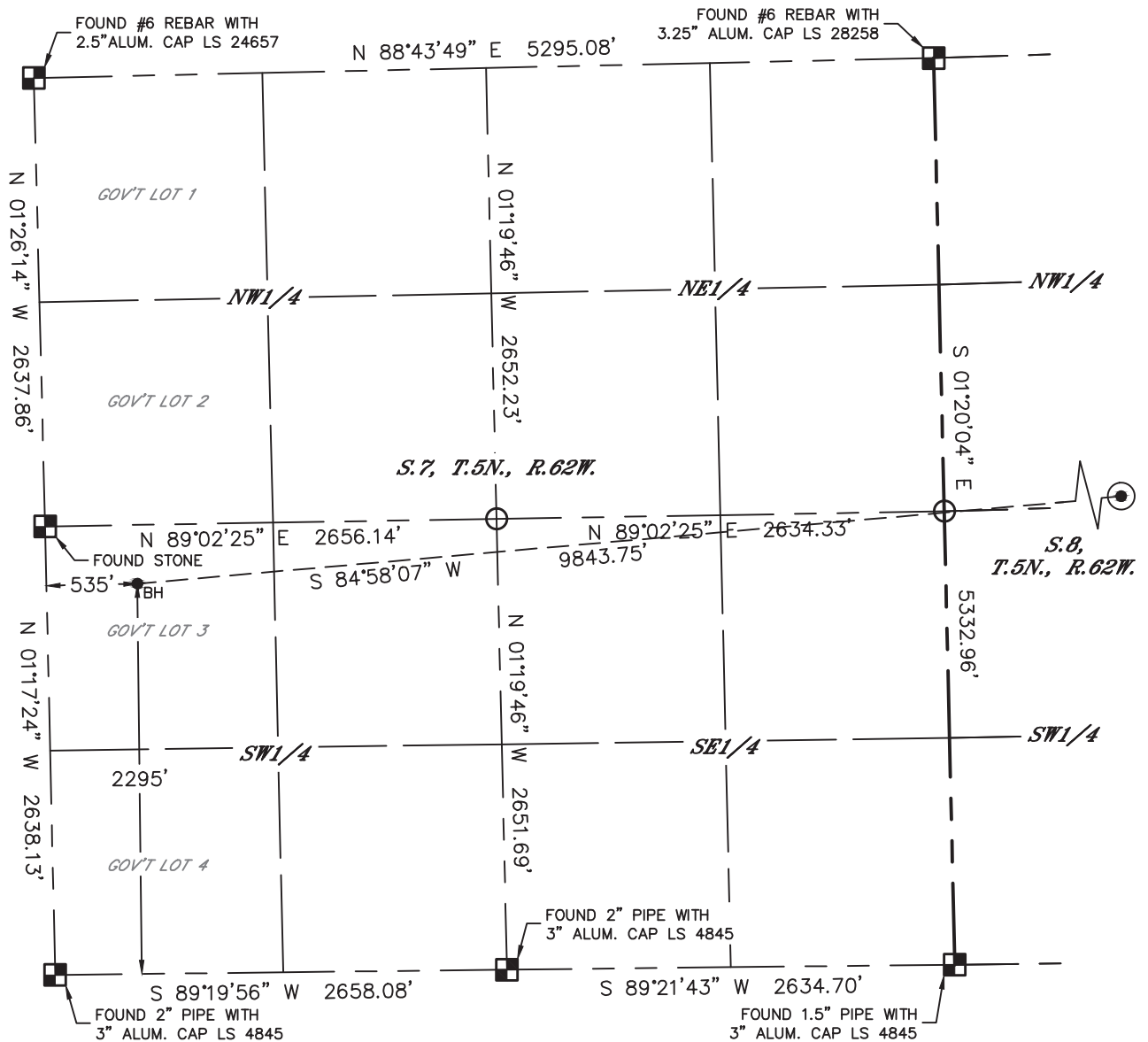


Lat40°, Inc. 6250 W. 10th Street, Unit 2, Greeley, CO 970-515-5294

# WELL LOCATION CERTIFICATE

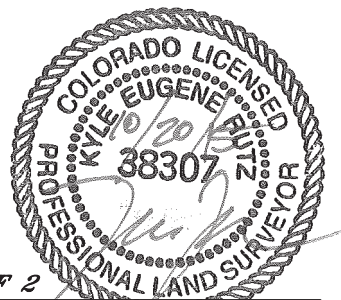
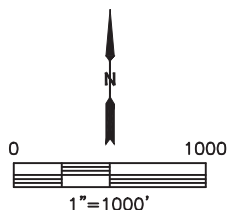
WELLS RANCH AF07-645

SECTION: 8  
TOWNSHIP: 5N  
RANGE: 62W  
6TH. P.M.  
WELD COUNTY, CO



## LEGEND

- = ALIQUOT MONUMENT AS DESCRIBED
- = CALCULATED POSITION
- ⊙ = SURFACE HOLE LOCATION (SHL)
- ▲ = ENTRY POINT LOCATION (EP)
- = BOTTOM HOLE LOCATION (BHL)
- ⊕ = EXISTING WELL
- ⊖ = ABANDONED WELL



SHEET 2 OF 2

Kyle E. Rutz—On behalf of Lat40, Inc.  
Colorado Licensed Professional Land Surveyor No. 38307  
DATE: 10/20/2015  
PROJECT#: 2015127