

# HALLIBURTON

iCem<sup>®</sup> Service

## **WPX ENERGY ROCKY MOUNTAIN LLC-EBUS**

**For: Dylan Goudie & Kinzie Beavers**

Date: Sunday, April 03, 2016

**RU 323-6 Surface**

API# 05-045-22596-00

Sincerely,

**Grand Junction Cement Engineering**

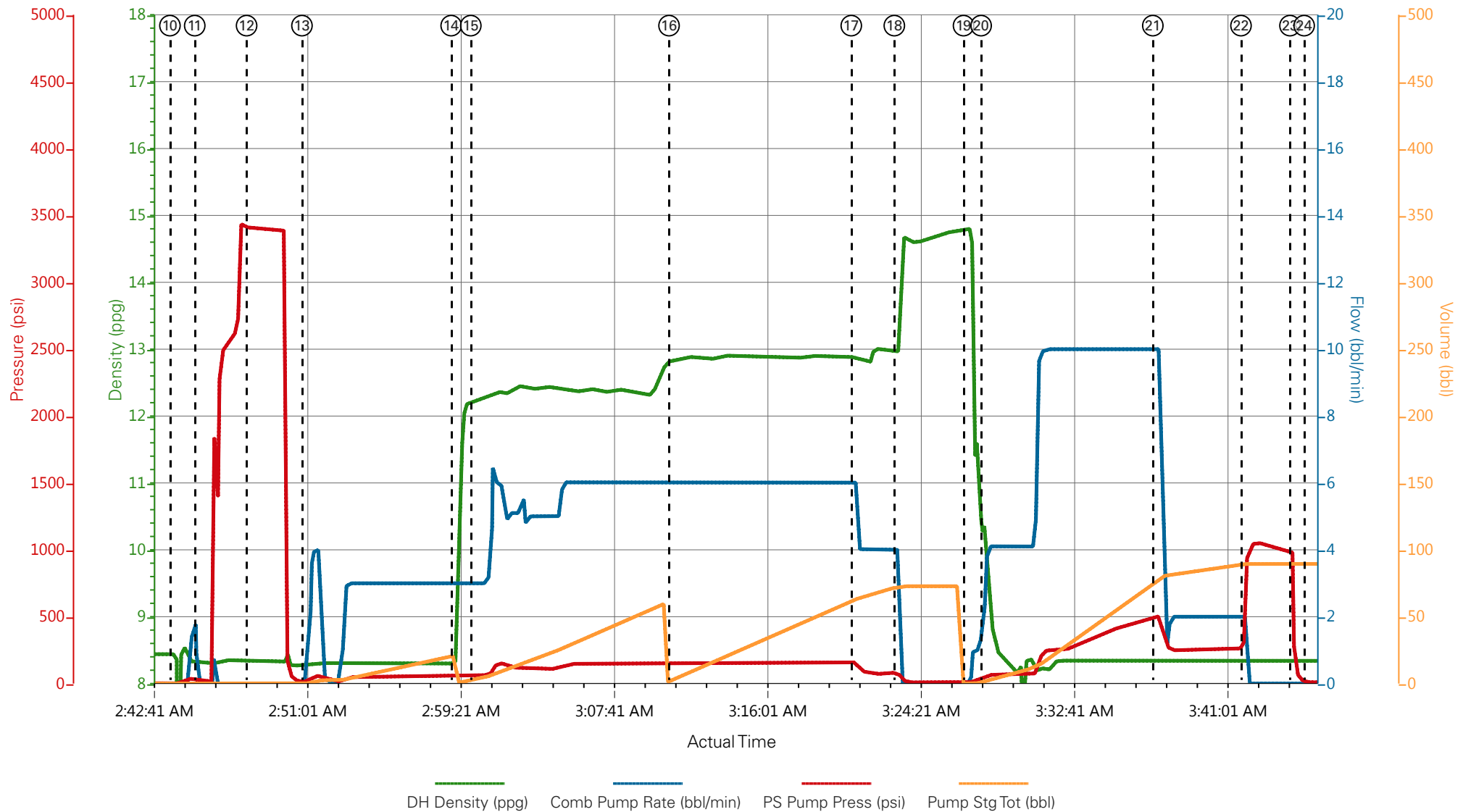
## 1.0 Real-Time Job Summary

## 1.1 Job Event Log

Type	Seq. No.	Graph Label	Date	Time	Source	DH Density (ppg)	Comb Pump Rate (bbl/min)	PS Pump Press (psi)	Pump Stg Tot (bbl)	Comments
Event	1	Call Out	4/2/2016	17:00:00	USER					REQUESTED ON LOCATION @23:00
Event	2	Pre-Convoy Safety Meeting	4/2/2016	18:45:00	USER					ALL HES PRESENT
Event	3	Crew Leave Yard	4/2/2016	19:00:00	USER					1 550 SERVICE PICKUP, 1 660 BULK TRUCK, HT 400 PUMP TRUCK E4 WAS LEFT ON LOCATION
Event	4	Arrive At Loc	4/2/2016	21:00:00	USER					RIG PULLING DP UPON HES ARRIVAL. RIGGED UP CASERS @ 23:00
Event	5	Assessment Of Location Safety Meeting	4/2/2016	22:00:00	USER					MET WITH CO. REP, AND WENT OVER NUMBERS. WALKED AROUND LOCATION AND COLLECTED WATER SAMPLE ( PH-7.5, CHLORIDES-500, TEMP-40'). CO. MAN WAS OFFERED SDS .
Event	6	Spot Equipment	4/3/2016	01:00:00	USER					1 550 SERVICE PICKUP, 1 660 BULK TRUCK, HT 400 PUMP TRUCK E4
Event	7	Pre-Rig Up Safety Meeting	4/3/2016	01:15:00	USER					ALL HES PRESENT
Event	8	Rig-Up Equipment	4/3/2016	01:25:00	USER					HES RIGGED UP EQUIPMENT TO REDZONE
Event	9	Pre-Job Safety Meeting	4/3/2016	02:25:00	USER					ALL HES AND RIG CREWS PRESENT
Event	10	Start Job	4/3/2016	02:43:44	USER					TD 1140', TP 1136', SJ 46', OH 13 1/2", CSG 9 5/8" H-40, 32.3#, MUD 9.2 PPG.
Event	11	Prime Lines	4/3/2016	02:45:04	USER	8.32	2.0	31.00	2	FRESH WATER
Event	12	Test Lines	4/3/2016	02:47:53	COM8			3407.00		PRESSURE HELD
Event	13	Pump H2O Spacer	4/3/2016	02:50:54	COM8	8.27	4.0	49	20	FRESH WATER
Event	14	Pump Lead Cement	4/3/2016	02:59:00	COM8	12.3	6.0	150	55	VARICEM GJ5 CEMENT 130 SKS, 12.3 PPG, 2.38 FT3/SK, 13.77 GAL/SK

Event	15	Check weight	4/3/2016	03:00:04	COM8					WEIGHT VERIFIED VIA PRESSUREIZED MUD SCALES
Event	16	Pump Tail Cement	4/3/2016	03:10:51	COM8	12.84	6.00	157.00	65.8	VARICEM GJ5 CEMENT 175 SKS, 12.8 PPG, 2.11 FT3/SK, 11.78 GAL/SK
Event	17	Slow Rate	4/3/2016	03:20:45	USER					SLOWED TO END CMT
Event	18	Shutdown	4/3/2016	03:23:05	USER					END OF CMT
Event	19	Pump Displacement	4/3/2016	03:26:51	COM8	8.33	10	490	75.8	FRESH WATER
Event	20	Drop Top Plug	4/3/2016	03:27:48	COM8					VERIFIED BY FLAG INDICATOR
Event	21	Slow Rate	4/3/2016	03:37:08	USER	8.35	2.0	250	10	SLOWED TO BUMP PLUG
Event	22	Bump Plug	4/3/2016	03:41:55	USER	8.35	2.00	260	85.8	LAND PLUG @ 260 PSI, BROUGHT UP TO 1050 PSI
Event	23	Check Floats	4/3/2016	03:44:35	USER			1050		FLOATS HELD
Event	24	End Job	4/3/2016	03:45:21	USER					RETURNS THROUGHOUT JOB, USED 40 LBS SUGAR, 25 BBL OF CEMENT BACK TO SURFACE
Event	25	Post-Job Safety Meeting (Pre Rig-Down)	4/3/2016	04:00:00	USER					ALL HES PRESENT
Event	26	Pre-Convoy Safety Meeting	4/3/2016	04:30:00	USER					ALL HES PRESENT
Event	27	Crew Leave Location	4/3/2016	04:45:00	USER					THANK YOU FOR CHOOSING HALLIBURTON CEMENT, DUSTIN HYDE AND CREW

# WPX - FED RU 323-6 - 9 5/8" SURFACE



- |                             |   |                          |                    |                     |                 |                               |
|-----------------------------|---|--------------------------|--------------------|---------------------|-----------------|-------------------------------|
| ① Call Out                  | ⑤ Assessment Of Location Safety Meeting | ⑨ Pre-Job Safety Meeting | ⑬ Pump H2O Spacer  | ⑰ Slow Rate         | 21 Slow Rate    | 25 Post-Job Safety Meeting (P |
| ② Pre-Convoy Safety Meeting | ⑥ Spot Equipment                        | ⑩ Start Job              | ⑭ Pump Lead Cement | ⑱ Shutdown          | 22 Bump Plug    | 26 Pre-Convoy Safety Meeting  |
| ③ Crew Leave Yard           | ⑦ Pre-Rig Up Safety Meeting             | ⑪ Prime Lines            | ⑮ Check weight     | ⑲ Pump Displacement | 23 Check Floats | 27 Crew Leave Location        |
| ④ Arrive At Loc             | ⑧ Rig-Up Equipment                      | ⑫ Test Lines             | ⑯ Pump Tail Cement | 20 Drop Top Plug    | 24 End Job      |                               |

▼ **HALLIBURTON** | iCem® Service

Created: 2016-04-02 21:36:09, Version: 4.2.393

Edit

Customer: WPX ENERGY ROCKY MOUNTAIN LLC-EBUS

Job Date: 4/3/2016

Well: FED RU 323-6

Representative: Ted Ragsdale

Sales Order #: 903217547

Elite 4: Hyde / Blossom

# WPX - FED RU 323-6 - 9 5/8" SURFACE

