

BILL BARRETT CORP

WELD COUNTY, COLORADO

CVR 5-63-32_33 Pad

CVR 5-63-32-6457C2

Wellbore #1

Plan: Design #1

Standard Planning Report

28 June, 2016



Bill Barrett Corporation

COMPANY DETAILS: BILL BARRETT CORP

Calculation Method: Minimum Curvature
Error System: ISCWSA
Scan Method: Closest Approach 3D
Error Surface: Elliptical Conic
Warning Method: Error Ratio

REFERENCE INFORMATION

Co-ordinate (N/E) Reference: Well CVR 5-63-32-6457C2, True North
Vertical (TVD) Reference: KB @ 4597.0ft (Original Well Elev)
Section (VS) Reference: Slot - (0.0N, 0.0E)
Measured Depth Reference: KB @ 4597.0ft (Original Well Elev)
Calculation Method: Minimum Curvature

WELL DETAILS: CVR 5-63-32-6457C2

+N/-S	+E/-W	Northing	Easting	Latitude	Longitude
0.0	0.0	1372957.54	3287444.73	40° 21' 9.291 N	104° 28' 7.028 W

WELLBORE TARGET DETAILS

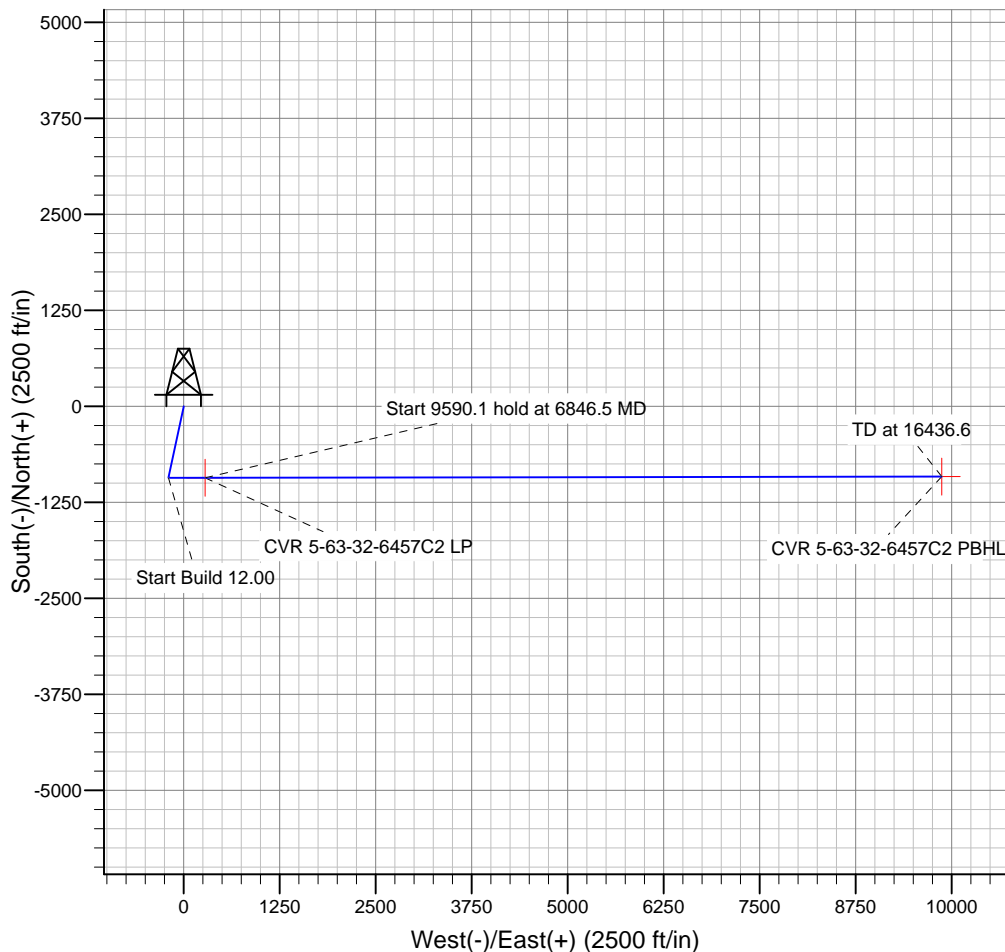
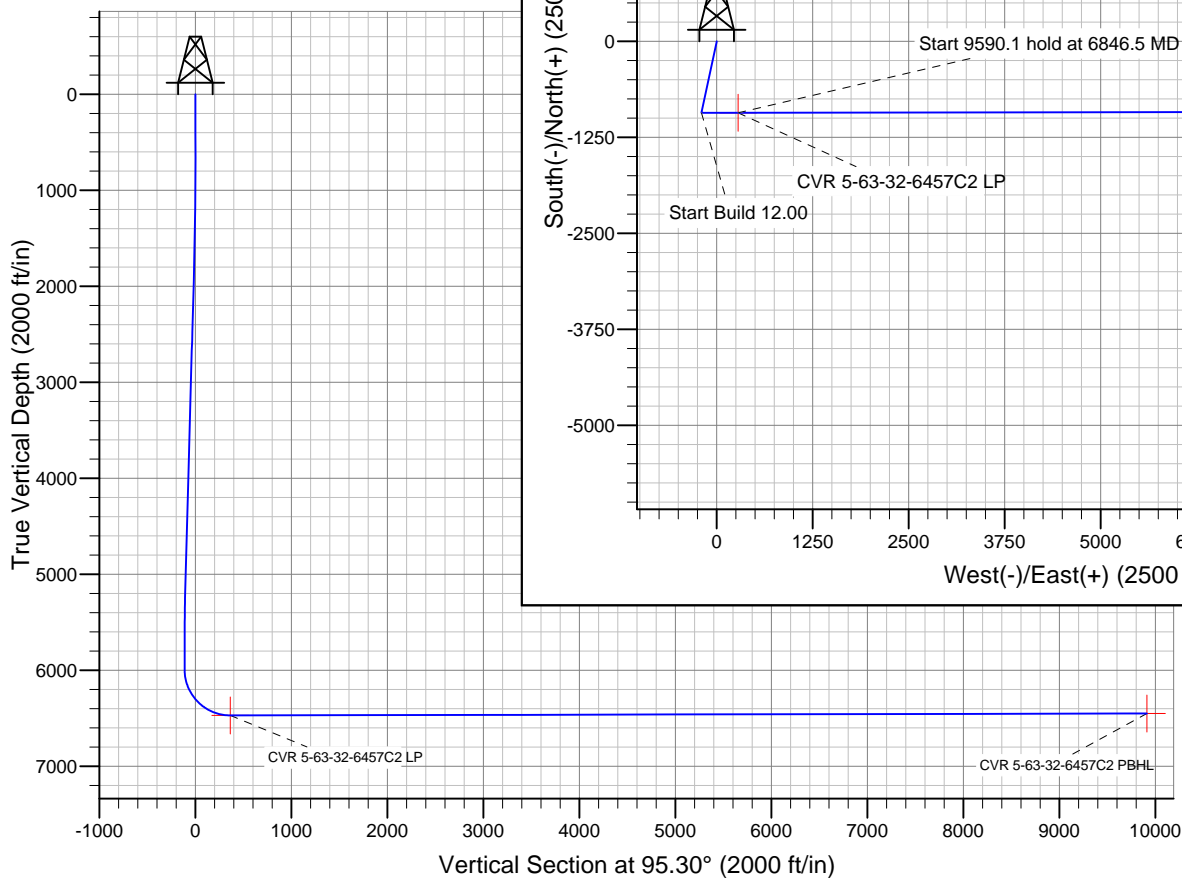
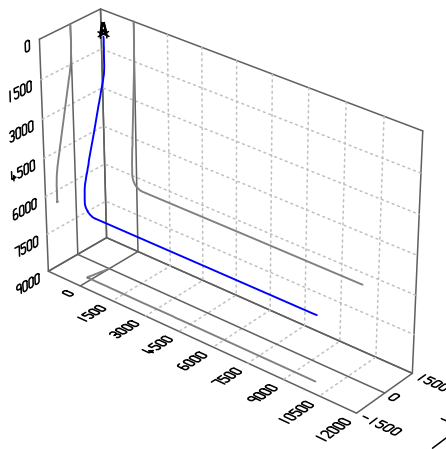
Name	TVD	+N/-S	+E/-W	Shape
CVR 5-63-32-6457C2 PBHL	6449.0	-916.0	9870.2	Point
CVR 5-63-32-6457C2 LP	6469.0	-931.1	280.1	Point

PROJECT DETAILS: WELD COUNTY, COLORADO

Geodetic System: US State Plane 1983
Datum: North American Datum 1983
Ellipsoid: GRS 1980
Zone: Colorado Northern Zone

SECTION DETAILS

Sec	MD	Inc	Azi	TVD	+N/-S	+E/-W	DLeg	TFace	VSec	Target
1	0.0	0.00	0.00	0.0	0.0	0.0	0.00	0.00	0.0	
2	1000.0	0.00	0.00	1000.0	0.0	0.0	0.00	0.00	0.0	
3	1656.9	13.14	192.02	1651.2	-73.4	-15.6	2.00	192.02	-8.8	
4	5188.5	13.14	192.02	5090.3	-858.5	-182.7	0.00	0.00	-102.6	
5	5845.5	0.00	89.91	5741.5	-931.9	-198.4	2.00	180.00	-111.4	
6	6095.5	0.00	89.91	5991.5	-931.9	-198.4	0.00	89.91	-111.4	
7	6846.5	90.12	89.91	6469.0	-931.1	280.1	12.00	89.91	365.0	CVR 5-63-32-6457C2 LP
8	16436.6	90.12	89.91	6449.0	-916.0	9870.2	0.00	0.00	9912.6	CVR 5-63-32-6457C2 PBHL



Azimuths to True North
Magnetic North: 8.22°

Magnetic Field
Strength: 52765.5snT
Dip Angle: 66.94°
Date: 12/31/2014
Model: IGRF2010

Bill Barrett Corp

Planning Report

Database:	Compass	Local Co-ordinate Reference:	Well CVR 5-63-32-6457C2
Company:	BILL BARRETT CORP	TVD Reference:	KB @ 4597.0ft (Original Well Elev)
Project:	WELD COUNTY, COLORADO	MD Reference:	KB @ 4597.0ft (Original Well Elev)
Site:	CVR 5-63-32_33 Pad	North Reference:	True
Well:	CVR 5-63-32-6457C2	Survey Calculation Method:	Minimum Curvature
Wellbore:	Wellbore #1		
Design:	Design #1		

Project	WELD COUNTY, COLORADO		
Map System:	US State Plane 1983	System Datum:	Mean Sea Level
Geo Datum:	North American Datum 1983		
Map Zone:	Colorado Northern Zone		

Site		CVR 5-63-32_33 Pad			
Site Position:		Northing:	1,373,018.00ft	Latitude:	40° 21' 9.889 N
From:	Lat/Long	Easting:	3,287,443.19ft	Longitude:	104° 28' 7.039 W
Position Uncertainty:		Slot Radius:	"	Grid Convergence:	0.67 °

Well	CVR 5-63-32-6457C2					
Well Position	+N-S	-60.5 ft	Northing:	1,372,957.54 ft	Latitude:	40° 21' 9.291 N
	+E-W	0.8 ft	Easting:	3,287,444.73 ft	Longitude:	104° 28' 7.028 W
Position Uncertainty		0.0 ft	Wellhead Elevation:	ft	Ground Level:	4,581.0 ft

Wellbore	Wellbore #1				
Magnetics	Model Name	Sample Date	Declination (°)	Dip Angle (°)	Field Strength (nT)
	IGRF2010	12/31/2014	8.22	66.94	52,766

Design	Design #1				
Audit Notes:					
Version:	Phase:	PLAN	Tie On Depth:	0.0	
Vertical Section:	Depth From (TVD) (ft)	+N/-S (ft)	+E/-W (ft)	Direction (°)	
	0.0	0.0	0.0	95.30	

Plan Sections										
Measured Depth (ft)	Inclination (°)	Azimuth (°)	Vertical Depth (ft)	+N/-S (ft)	+E/-W (ft)	Dogleg Rate (°/100ft)	Build Rate (°/100ft)	Turn Rate (°/100ft)	TFO (°)	Target
0.0	0.00	0.00	0.0	0.0	0.0	0.00	0.00	0.00	0.00	
1,000.0	0.00	0.00	1,000.0	0.0	0.0	0.00	0.00	0.00	0.00	
1,656.9	13.14	192.02	1,651.2	-73.4	-15.6	2.00	2.00	0.00	192.02	
5,188.5	13.14	192.02	5,090.3	-858.5	-182.7	0.00	0.00	0.00	0.00	
5,845.5	0.00	89.91	5,741.5	-931.9	-198.4	2.00	-2.00	0.00	180.00	
6,095.5	0.00	89.91	5,991.5	-931.9	-198.4	0.00	0.00	0.00	89.91	
6,846.5	90.12	89.91	6,469.0	-931.1	280.1	12.00	12.00	0.00	89.91	CVR 5-63-32-6457C
16,436.6	90.12	89.91	6,449.0	-916.0	9,870.2	0.00	0.00	0.00	0.00	CVR 5-63-32-6457C

Bill Barrett Corp

Planning Report

Database:	Compass	Local Co-ordinate Reference:	Well CVR 5-63-32-6457C2
Company:	BILL BARRETT CORP	TVD Reference:	KB @ 4597.0ft (Original Well Elev)
Project:	WELD COUNTY, COLORADO	MD Reference:	KB @ 4597.0ft (Original Well Elev)
Site:	CVR 5-63-32_33 Pad	North Reference:	True
Well:	CVR 5-63-32-6457C2	Survey Calculation Method:	Minimum Curvature
Wellbore:	Wellbore #1		
Design:	Design #1		

Planned Survey									
Measured Depth (ft)	Inclination (°)	Azimuth (°)	Vertical Depth (ft)	+N/-S (ft)	+E/-W (ft)	Vertical Section (ft)	Dogleg Rate (°/100ft)	Build Rate (°/100ft)	Turn Rate (°/100ft)
0.0	0.00	0.00	0.0	0.0	0.0	0.0	0.00	0.00	0.00
100.0	0.00	0.00	100.0	0.0	0.0	0.0	0.00	0.00	0.00
200.0	0.00	0.00	200.0	0.0	0.0	0.0	0.00	0.00	0.00
300.0	0.00	0.00	300.0	0.0	0.0	0.0	0.00	0.00	0.00
400.0	0.00	0.00	400.0	0.0	0.0	0.0	0.00	0.00	0.00
500.0	0.00	0.00	500.0	0.0	0.0	0.0	0.00	0.00	0.00
600.0	0.00	0.00	600.0	0.0	0.0	0.0	0.00	0.00	0.00
700.0	0.00	0.00	700.0	0.0	0.0	0.0	0.00	0.00	0.00
800.0	0.00	0.00	800.0	0.0	0.0	0.0	0.00	0.00	0.00
900.0	0.00	0.00	900.0	0.0	0.0	0.0	0.00	0.00	0.00
1,000.0	0.00	0.00	1,000.0	0.0	0.0	0.0	0.00	0.00	0.00
1,100.0	2.00	192.02	1,100.0	-1.7	-0.4	-0.2	2.00	2.00	0.00
1,200.0	4.00	192.02	1,199.8	-6.8	-1.5	-0.8	2.00	2.00	0.00
1,300.0	6.00	192.02	1,299.5	-15.3	-3.3	-1.8	2.00	2.00	0.00
1,400.0	8.00	192.02	1,398.7	-27.3	-5.8	-3.3	2.00	2.00	0.00
1,500.0	10.00	192.02	1,497.5	-42.6	-9.1	-5.1	2.00	2.00	0.00
1,600.0	12.00	192.02	1,595.6	-61.2	-13.0	-7.3	2.00	2.00	0.00
1,656.9	13.14	192.02	1,651.2	-73.4	-15.6	-8.8	2.00	2.00	0.00
1,700.0	13.14	192.02	1,693.1	-82.9	-17.7	-9.9	0.00	0.00	0.00
1,800.0	13.14	192.02	1,790.5	-105.2	-22.4	-12.6	0.00	0.00	0.00
1,900.0	13.14	192.02	1,887.9	-127.4	-27.1	-15.2	0.00	0.00	0.00
2,000.0	13.14	192.02	1,985.3	-149.6	-31.8	-17.9	0.00	0.00	0.00
2,100.0	13.14	192.02	2,082.7	-171.9	-36.6	-20.5	0.00	0.00	0.00
2,200.0	13.14	192.02	2,180.0	-194.1	-41.3	-23.2	0.00	0.00	0.00
2,300.0	13.14	192.02	2,277.4	-216.3	-46.0	-25.9	0.00	0.00	0.00
2,400.0	13.14	192.02	2,374.8	-238.6	-50.8	-28.5	0.00	0.00	0.00
2,500.0	13.14	192.02	2,472.2	-260.8	-55.5	-31.2	0.00	0.00	0.00
2,600.0	13.14	192.02	2,569.6	-283.0	-60.2	-33.8	0.00	0.00	0.00
2,700.0	13.14	192.02	2,667.0	-305.3	-65.0	-36.5	0.00	0.00	0.00
2,800.0	13.14	192.02	2,764.3	-327.5	-69.7	-39.1	0.00	0.00	0.00
2,900.0	13.14	192.02	2,861.7	-349.7	-74.4	-41.8	0.00	0.00	0.00
3,000.0	13.14	192.02	2,959.1	-372.0	-79.2	-44.5	0.00	0.00	0.00
3,100.0	13.14	192.02	3,056.5	-394.2	-83.9	-47.1	0.00	0.00	0.00
3,200.0	13.14	192.02	3,153.9	-416.4	-88.6	-49.8	0.00	0.00	0.00
3,300.0	13.14	192.02	3,251.2	-438.7	-93.4	-52.4	0.00	0.00	0.00
3,400.0	13.14	192.02	3,348.6	-460.9	-98.1	-55.1	0.00	0.00	0.00
3,500.0	13.14	192.02	3,446.0	-483.1	-102.8	-57.7	0.00	0.00	0.00
3,600.0	13.14	192.02	3,543.4	-505.4	-107.6	-60.4	0.00	0.00	0.00
3,700.0	13.14	192.02	3,640.8	-527.6	-112.3	-63.1	0.00	0.00	0.00
3,800.0	13.14	192.02	3,738.2	-549.8	-117.0	-65.7	0.00	0.00	0.00
3,900.0	13.14	192.02	3,835.5	-572.0	-121.8	-68.4	0.00	0.00	0.00
4,000.0	13.14	192.02	3,932.9	-594.3	-126.5	-71.0	0.00	0.00	0.00
4,100.0	13.14	192.02	4,030.3	-616.5	-131.2	-73.7	0.00	0.00	0.00
4,200.0	13.14	192.02	4,127.7	-638.7	-136.0	-76.3	0.00	0.00	0.00
4,300.0	13.14	192.02	4,225.1	-661.0	-140.7	-79.0	0.00	0.00	0.00
4,400.0	13.14	192.02	4,322.5	-683.2	-145.4	-81.7	0.00	0.00	0.00
4,500.0	13.14	192.02	4,419.8	-705.4	-150.2	-84.3	0.00	0.00	0.00
4,600.0	13.14	192.02	4,517.2	-727.7	-154.9	-87.0	0.00	0.00	0.00
4,700.0	13.14	192.02	4,614.6	-749.9	-159.6	-89.6	0.00	0.00	0.00
4,800.0	13.14	192.02	4,712.0	-772.1	-164.4	-92.3	0.00	0.00	0.00
4,900.0	13.14	192.02	4,809.4	-794.4	-169.1	-95.0	0.00	0.00	0.00
5,000.0	13.14	192.02	4,906.7	-816.6	-173.8	-97.6	0.00	0.00	0.00
5,100.0	13.14	192.02	5,004.1	-838.8	-178.5	-100.3	0.00	0.00	0.00
5,188.5	13.14	192.02	5,090.3	-858.5	-182.7	-102.6	0.00	0.00	0.00

Bill Barrett Corp

Planning Report

Database:	Compass	Local Co-ordinate Reference:	Well CVR 5-63-32-6457C2
Company:	BILL BARRETT CORP	TVD Reference:	KB @ 4597.0ft (Original Well Elev)
Project:	WELD COUNTY, COLORADO	MD Reference:	KB @ 4597.0ft (Original Well Elev)
Site:	CVR 5-63-32_33 Pad	North Reference:	True
Well:	CVR 5-63-32-6457C2	Survey Calculation Method:	Minimum Curvature
Wellbore:	Wellbore #1		
Design:	Design #1		

Planned Survey									
Measured Depth (ft)	Inclination (°)	Azimuth (°)	Vertical Depth (ft)	+N/-S (ft)	+E/-W (ft)	Vertical Section (ft)	Dogleg Rate (°/100ft)	Build Rate (°/100ft)	Turn Rate (°/100ft)
5,200.0	12.91	192.02	5,101.5	-861.1	-183.3	-102.9	2.00	-2.00	0.00
5,300.0	10.91	192.02	5,199.4	-881.2	-187.6	-105.3	2.00	-2.00	0.00
5,400.0	8.91	192.02	5,297.9	-898.1	-191.2	-107.3	2.00	-2.00	0.00
5,500.0	6.91	192.02	5,396.9	-911.5	-194.0	-109.0	2.00	-2.00	0.00
5,600.0	4.91	192.02	5,496.4	-921.6	-196.2	-110.2	2.00	-2.00	0.00
5,700.0	2.91	192.02	5,596.1	-928.3	-197.6	-111.0	2.00	-2.00	0.00
5,800.0	0.91	192.02	5,696.1	-931.5	-198.3	-111.3	2.00	-2.00	0.00
5,845.5	0.00	89.91	5,741.5	-931.9	-198.4	-111.4	2.00	-2.00	0.00
5,900.0	0.00	89.91	5,796.1	-931.9	-198.4	-111.4	0.00	0.00	0.00
6,000.0	0.00	89.91	5,896.1	-931.9	-198.4	-111.4	0.00	0.00	0.00
6,095.5	0.00	89.91	5,991.5	-931.9	-198.4	-111.4	0.00	0.00	0.00
6,100.0	0.54	89.91	5,996.1	-931.9	-198.3	-111.4	12.00	12.00	0.00
6,200.0	12.54	89.91	6,095.2	-931.9	-187.0	-100.0	12.00	12.00	0.00
6,300.0	24.54	89.91	6,189.9	-931.8	-155.2	-68.4	12.00	12.00	0.00
6,400.0	36.54	89.91	6,275.8	-931.7	-104.5	-17.9	12.00	12.00	0.00
6,500.0	48.54	89.91	6,349.4	-931.6	-37.0	49.3	12.00	12.00	0.00
6,600.0	60.54	89.91	6,407.3	-931.5	44.3	130.2	12.00	12.00	0.00
6,700.0	72.54	89.91	6,447.0	-931.4	135.9	221.4	12.00	12.00	0.00
6,800.0	84.54	89.91	6,466.8	-931.2	233.7	318.8	12.00	12.00	0.00
6,846.5	90.12	89.91	6,469.0	-931.1	280.1	365.0	12.00	12.00	0.00
CVR 5-63-32-6457C2 LP									
6,900.0	90.12	89.91	6,468.9	-931.0	333.6	418.3	0.00	0.00	0.00
7,000.0	90.12	89.91	6,468.7	-930.9	433.6	517.8	0.00	0.00	0.00
7,100.0	90.12	89.91	6,468.5	-930.7	533.6	617.4	0.00	0.00	0.00
7,200.0	90.12	89.91	6,468.3	-930.6	633.6	716.9	0.00	0.00	0.00
7,300.0	90.12	89.91	6,468.1	-930.4	733.6	816.5	0.00	0.00	0.00
7,400.0	90.12	89.91	6,467.8	-930.3	833.6	916.0	0.00	0.00	0.00
7,500.0	90.12	89.91	6,467.6	-930.1	933.6	1,015.6	0.00	0.00	0.00
7,600.0	90.12	89.91	6,467.4	-929.9	1,033.6	1,115.2	0.00	0.00	0.00
7,700.0	90.12	89.91	6,467.2	-929.8	1,133.6	1,214.7	0.00	0.00	0.00
7,800.0	90.12	89.91	6,467.0	-929.6	1,233.6	1,314.3	0.00	0.00	0.00
7,900.0	90.12	89.91	6,466.8	-929.5	1,333.6	1,413.8	0.00	0.00	0.00
8,000.0	90.12	89.91	6,466.6	-929.3	1,433.6	1,513.4	0.00	0.00	0.00
8,100.0	90.12	89.91	6,466.4	-929.2	1,533.6	1,612.9	0.00	0.00	0.00
8,200.0	90.12	89.91	6,466.2	-929.0	1,633.6	1,712.5	0.00	0.00	0.00
8,300.0	90.12	89.91	6,466.0	-928.8	1,733.6	1,812.1	0.00	0.00	0.00
8,400.0	90.12	89.91	6,465.8	-928.7	1,833.6	1,911.6	0.00	0.00	0.00
8,500.0	90.12	89.91	6,465.6	-928.5	1,933.6	2,011.2	0.00	0.00	0.00
8,600.0	90.12	89.91	6,465.3	-928.4	2,033.6	2,110.7	0.00	0.00	0.00
8,700.0	90.12	89.91	6,465.1	-928.2	2,133.6	2,210.3	0.00	0.00	0.00
8,800.0	90.12	89.91	6,464.9	-928.1	2,233.6	2,309.8	0.00	0.00	0.00
8,900.0	90.12	89.91	6,464.7	-927.9	2,333.6	2,409.4	0.00	0.00	0.00
9,000.0	90.12	89.91	6,464.5	-927.7	2,433.6	2,509.0	0.00	0.00	0.00
9,100.0	90.12	89.91	6,464.3	-927.6	2,533.6	2,608.5	0.00	0.00	0.00
9,200.0	90.12	89.91	6,464.1	-927.4	2,633.6	2,708.1	0.00	0.00	0.00
9,300.0	90.12	89.91	6,463.9	-927.3	2,733.6	2,807.6	0.00	0.00	0.00
9,400.0	90.12	89.91	6,463.7	-927.1	2,833.6	2,907.2	0.00	0.00	0.00
9,500.0	90.12	89.91	6,463.5	-927.0	2,933.6	3,006.7	0.00	0.00	0.00
9,600.0	90.12	89.91	6,463.3	-926.8	3,033.6	3,106.3	0.00	0.00	0.00
9,700.0	90.12	89.91	6,463.0	-926.6	3,133.6	3,205.9	0.00	0.00	0.00
9,800.0	90.12	89.91	6,462.8	-926.5	3,233.6	3,305.4	0.00	0.00	0.00
9,900.0	90.12	89.91	6,462.6	-926.3	3,333.6	3,405.0	0.00	0.00	0.00
10,000.0	90.12	89.91	6,462.4	-926.2	3,433.6	3,504.5	0.00	0.00	0.00

Bill Barrett Corp

Planning Report

Database:	Compass	Local Co-ordinate Reference:	Well CVR 5-63-32-6457C2
Company:	BILL BARRETT CORP	TVD Reference:	KB @ 4597.0ft (Original Well Elev)
Project:	WELD COUNTY, COLORADO	MD Reference:	KB @ 4597.0ft (Original Well Elev)
Site:	CVR 5-63-32_33 Pad	North Reference:	True
Well:	CVR 5-63-32-6457C2	Survey Calculation Method:	Minimum Curvature
Wellbore:	Wellbore #1		
Design:	Design #1		

Planned Survey										
Measured Depth (ft)	Inclination (°)	Azimuth (°)	Vertical Depth (ft)	+N/-S (ft)	+E/-W (ft)	Vertical Section (ft)	Dogleg Rate (°/100ft)	Build Rate (°/100ft)	Turn Rate (°/100ft)	
10,100.0	90.12	89.91	6,462.2	-926.0	3,533.6	3,604.1	0.00	0.00	0.00	
10,200.0	90.12	89.91	6,462.0	-925.9	3,633.6	3,703.6	0.00	0.00	0.00	
10,300.0	90.12	89.91	6,461.8	-925.7	3,733.6	3,803.2	0.00	0.00	0.00	
10,400.0	90.12	89.91	6,461.6	-925.5	3,833.6	3,902.8	0.00	0.00	0.00	
10,500.0	90.12	89.91	6,461.4	-925.4	3,933.6	4,002.3	0.00	0.00	0.00	
10,600.0	90.12	89.91	6,461.2	-925.2	4,033.6	4,101.9	0.00	0.00	0.00	
10,700.0	90.12	89.91	6,461.0	-925.1	4,133.6	4,201.4	0.00	0.00	0.00	
10,800.0	90.12	89.91	6,460.8	-924.9	4,233.6	4,301.0	0.00	0.00	0.00	
10,900.0	90.12	89.91	6,460.5	-924.7	4,333.6	4,400.5	0.00	0.00	0.00	
11,000.0	90.12	89.91	6,460.3	-924.6	4,433.6	4,500.1	0.00	0.00	0.00	
11,100.0	90.12	89.91	6,460.1	-924.4	4,533.6	4,599.7	0.00	0.00	0.00	
11,200.0	90.12	89.91	6,459.9	-924.3	4,633.6	4,699.2	0.00	0.00	0.00	
11,300.0	90.12	89.91	6,459.7	-924.1	4,733.6	4,798.8	0.00	0.00	0.00	
11,400.0	90.12	89.91	6,459.5	-924.0	4,833.6	4,898.3	0.00	0.00	0.00	
11,500.0	90.12	89.91	6,459.3	-923.8	4,933.6	4,997.9	0.00	0.00	0.00	
11,600.0	90.12	89.91	6,459.1	-923.6	5,033.6	5,097.4	0.00	0.00	0.00	
11,700.0	90.12	89.91	6,458.9	-923.5	5,133.6	5,197.0	0.00	0.00	0.00	
11,800.0	90.12	89.91	6,458.7	-923.3	5,233.6	5,296.6	0.00	0.00	0.00	
11,900.0	90.12	89.91	6,458.5	-923.2	5,333.6	5,396.1	0.00	0.00	0.00	
12,000.0	90.12	89.91	6,458.3	-923.0	5,433.6	5,495.7	0.00	0.00	0.00	
12,100.0	90.12	89.91	6,458.0	-922.9	5,533.6	5,595.2	0.00	0.00	0.00	
12,200.0	90.12	89.91	6,457.8	-922.7	5,633.6	5,694.8	0.00	0.00	0.00	
12,300.0	90.12	89.91	6,457.6	-922.5	5,733.6	5,794.3	0.00	0.00	0.00	
12,400.0	90.12	89.91	6,457.4	-922.4	5,833.6	5,893.9	0.00	0.00	0.00	
12,500.0	90.12	89.91	6,457.2	-922.2	5,933.6	5,993.5	0.00	0.00	0.00	
12,600.0	90.12	89.91	6,457.0	-922.1	6,033.6	6,093.0	0.00	0.00	0.00	
12,700.0	90.12	89.91	6,456.8	-921.9	6,133.6	6,192.6	0.00	0.00	0.00	
12,800.0	90.12	89.91	6,456.6	-921.8	6,233.6	6,292.1	0.00	0.00	0.00	
12,900.0	90.12	89.91	6,456.4	-921.6	6,333.6	6,391.7	0.00	0.00	0.00	
13,000.0	90.12	89.91	6,456.2	-921.4	6,433.6	6,491.2	0.00	0.00	0.00	
13,100.0	90.12	89.91	6,456.0	-921.3	6,533.6	6,590.8	0.00	0.00	0.00	
13,200.0	90.12	89.91	6,455.7	-921.1	6,633.6	6,690.4	0.00	0.00	0.00	
13,300.0	90.12	89.91	6,455.5	-921.0	6,733.6	6,789.9	0.00	0.00	0.00	
13,400.0	90.12	89.91	6,455.3	-920.8	6,833.6	6,889.5	0.00	0.00	0.00	
13,500.0	90.12	89.91	6,455.1	-920.7	6,933.6	6,989.0	0.00	0.00	0.00	
13,600.0	90.12	89.91	6,454.9	-920.5	7,033.6	7,088.6	0.00	0.00	0.00	
13,700.0	90.12	89.91	6,454.7	-920.3	7,133.6	7,188.1	0.00	0.00	0.00	
13,800.0	90.12	89.91	6,454.5	-920.2	7,233.6	7,287.7	0.00	0.00	0.00	
13,900.0	90.12	89.91	6,454.3	-920.0	7,333.6	7,387.3	0.00	0.00	0.00	
14,000.0	90.12	89.91	6,454.1	-919.9	7,433.6	7,486.8	0.00	0.00	0.00	
14,100.0	90.12	89.91	6,453.9	-919.7	7,533.6	7,586.4	0.00	0.00	0.00	
14,200.0	90.12	89.91	6,453.7	-919.6	7,633.6	7,685.9	0.00	0.00	0.00	
14,300.0	90.12	89.91	6,453.5	-919.4	7,733.6	7,785.5	0.00	0.00	0.00	
14,400.0	90.12	89.91	6,453.2	-919.2	7,833.6	7,885.0	0.00	0.00	0.00	
14,500.0	90.12	89.91	6,453.0	-919.1	7,933.6	7,984.6	0.00	0.00	0.00	
14,600.0	90.12	89.91	6,452.8	-918.9	8,033.6	8,084.2	0.00	0.00	0.00	
14,700.0	90.12	89.91	6,452.6	-918.8	8,133.6	8,183.7	0.00	0.00	0.00	
14,800.0	90.12	89.91	6,452.4	-918.6	8,233.6	8,283.3	0.00	0.00	0.00	
14,900.0	90.12	89.91	6,452.2	-918.5	8,333.6	8,382.8	0.00	0.00	0.00	
15,000.0	90.12	89.91	6,452.0	-918.3	8,433.6	8,482.4	0.00	0.00	0.00	
15,100.0	90.12	89.91	6,451.8	-918.1	8,533.6	8,581.9	0.00	0.00	0.00	
15,200.0	90.12	89.91	6,451.6	-918.0	8,633.6	8,681.5	0.00	0.00	0.00	
15,300.0	90.12	89.91	6,451.4	-917.8	8,733.6	8,781.1	0.00	0.00	0.00	
15,400.0	90.12	89.91	6,451.2	-917.7	8,833.6	8,880.6	0.00	0.00	0.00	

Bill Barrett Corp

Planning Report

Database:	Compass	Local Co-ordinate Reference:	Well CVR 5-63-32-6457C2
Company:	BILL BARRETT CORP	TVD Reference:	KB @ 4597.0ft (Original Well Elev)
Project:	WELD COUNTY, COLORADO	MD Reference:	KB @ 4597.0ft (Original Well Elev)
Site:	CVR 5-63-32_33 Pad	North Reference:	True
Well:	CVR 5-63-32-6457C2	Survey Calculation Method:	Minimum Curvature
Wellbore:	Wellbore #1		
Design:	Design #1		

Planned Survey										
Measured Depth (ft)	Inclination (°)	Azimuth (°)	Vertical Depth (ft)	+N/-S (ft)	+E/-W (ft)	Vertical Section (ft)	Dogleg Rate (°/100ft)	Build Rate (°/100ft)	Turn Rate (°/100ft)	
15,500.0	90.12	89.91	6,451.0	-917.5	8,933.6	8,980.2	0.00	0.00	0.00	
15,600.0	90.12	89.91	6,450.7	-917.4	9,033.6	9,079.7	0.00	0.00	0.00	
15,700.0	90.12	89.91	6,450.5	-917.2	9,133.6	9,179.3	0.00	0.00	0.00	
15,800.0	90.12	89.91	6,450.3	-917.0	9,233.6	9,278.8	0.00	0.00	0.00	
15,900.0	90.12	89.91	6,450.1	-916.9	9,333.6	9,378.4	0.00	0.00	0.00	
16,000.0	90.12	89.91	6,449.9	-916.7	9,433.6	9,478.0	0.00	0.00	0.00	
16,100.0	90.12	89.91	6,449.7	-916.6	9,533.6	9,577.5	0.00	0.00	0.00	
16,200.0	90.12	89.91	6,449.5	-916.4	9,633.6	9,677.1	0.00	0.00	0.00	
16,300.0	90.12	89.91	6,449.3	-916.3	9,733.6	9,776.6	0.00	0.00	0.00	
16,400.0	90.12	89.91	6,449.1	-916.1	9,833.6	9,876.2	0.00	0.00	0.00	
16,436.6	90.12	89.91	6,449.0	-916.0	9,870.2	9,912.6	0.00	0.00	0.00	
CVR 5-63-32-6457C2 PBHL										