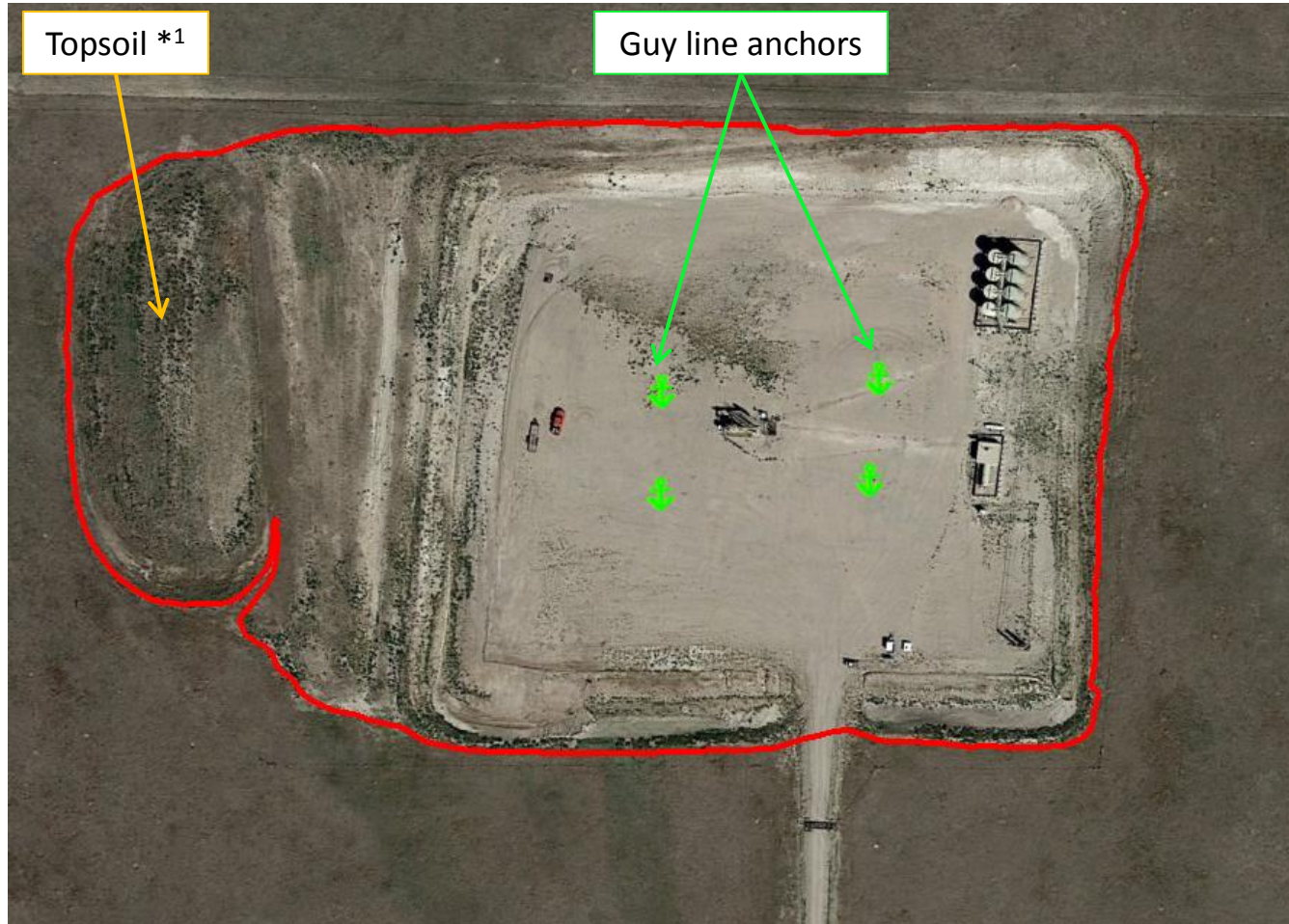


Reclamation Inspection- Overview



Google Earth aerial photo taken 9/7/16 illustrating total disturbance of the Railay #28-3-1 well location. Total area of 10.2 acres (Position dilution of precision (PDOP) = 2.6) was mapped using a Trimble Juno 3B handheld device indicates the location was overbuilt by approximately 3.5 acres.

*1 = Possible topsoil stockpile. Stockpile not marked or documented.

Reclamation Inspection



Photo 1. Photo taken of debris on topsoil stockpile. Need to remove debris per Rule 603.f.

Reclamation Inspection



Photo 2. Photo taken from the approximate center (i.e., top) of the topsoil stockpile, facing South. Topsoil stockpile has undesirable plant species established throughout the stockpile (i.e., cheatgrass and Russian thistle) which is not protective of soils to prevent weed establishment under Rule 1002.c.

Reclamation Inspection



Photo 3. Photo taken from entrance of location, facing West. Need to stabilize unconsolidated soil material and implement BMPs in accordance with good engineering practices along the southern location in a manner that minimizes erosion, transport of sediment offsite, and site degradation per Rule 1002.f.

Reclamation Inspection



Photo 4. Photo taken from entrance of location, facing East. Need to stabilize unconsolidated soil material and implement BMPs in accordance with good engineering practices along the southern location in a manner that minimizes erosion, transport of sediment offsite, and site degradation per Rule 1002.f.

Reclamation Inspection



Photo 5. Photo taken from the northeast location, facing North. Rill erosion occurring throughout entire north cut slope. Need to stabilize and implement erosion controls designed to minimize erosion along the entire north cut slope per Rule 1002.f.

Reclamation Inspection

Photo taken from the southeast location, facing South



Photo taken from the southeast location, facing North



Photo 6. Accumulations of Russian thistle were observed along the east fence line. This constitutes as waste material and needs to be removed per Rule 603.f., using the Rule 603.f. guidance document for further details..