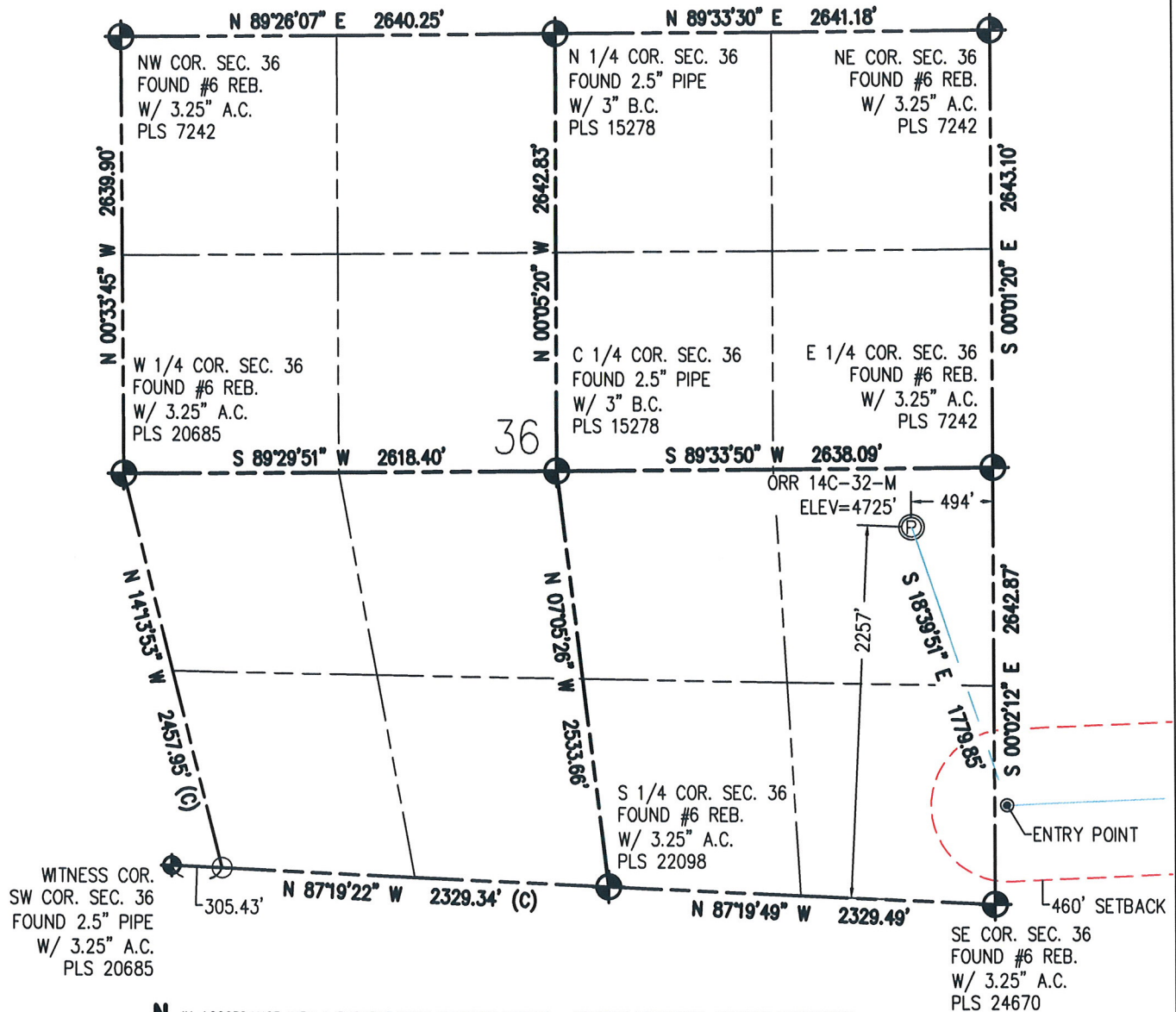


WELL LOCATION CERTIFICATE

THIS MAP DOES NOT REPRESENT A BOUNDARY SURVEY



0 1000
Scale 1" = 1000 ft

NOTES:

- 1) NEAREST CULTURAL ITEMS:
BUILDING: 1609' SW
BUILDING UNIT: 1797' SW
HIGH OCCUPANCY BUILDING UNIT: 5280'+
DESIGNATED OUTSIDE ACTIVITY AREA: 5280'+
PUBLIC ROAD: WELD COUNTY ROAD 25 482' E
ABOVE GROUND UTILITY: 469' E
RAILROAD: 5280'+
PROPERTY LINE: 494' E
- 2) SURFACE USE: GRASSLAND.
- 3) OPERATOR NAME: DARIN ZICAFOOSE.
- 4) THE NEAREST EXISTING WELL IS: STATE M36-9 302' N.
- 5) Bearings shown are grid bearings of the Colorado State Plane Coordinate System, North Zone, North American Datum 1983/2007. The lineal dimensions as contained herein are based upon the "U.S. Survey Foot."
- 6) Ground elevations are based on an observed GPS elevation (NAVD 88 DATUM).
- 7) IMPROVEMENTS: See LOCATION DRAWING for all visible improvements within 500' of disturbed area.

IN ACCORDANCE WITH A REQUEST FROM BRANDON LORENZ - SYNERGY RESOURCES, BASELINE ENGINEERING CORP. HAS DETERMINED THE LOCATION OF THE ORR 14C-32-M TO BE 2257' FSL AND 494' FEL, AS MEASURED AT NINETY (90) DEGREES FROM THE SECTION LINE OF SECTION 36, TOWNSHIP 6 NORTH, RANGE 67 WEST AND THE BOTTOM HOLE LOCATION TO BE 568' FSL AND 2581' FWL OF SECTION 32, TOWNSHIP 6 NORTH, RANGE 66 WEST, 6TH PRINCIPAL MERIDIAN, WELD COUNTY, COLORADO.

I HEREBY CERTIFY THAT THIS WELL LOCATION CERTIFICATE WAS PREPARED BY ME, OR UNDER MY DIRECT SUPERVISION, THAT THE FIELD WORK WAS COMPLETED ON 7/22/2016, THAT IT IS NOT A LAND SURVEY PLAT OR AN IMPROVEMENT SURVEY PLAT, AND THAT IT IS NOT TO BE RELIED UPON FOR ESTABLISHMENT OF FENCE, BUILDING, OR OTHER FUTURE IMPROVEMENT LINES.

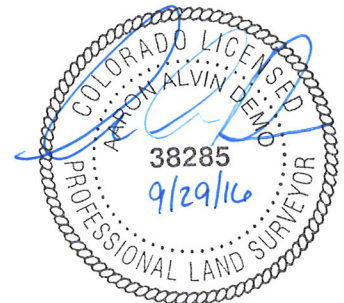
SURFACE HOLE:
LATITUDE: 40.442472° N
LONGITUDE: 104.834315° W
PDOP: 1.4
1/4, 1/4: NE1/4SE1/4

BOTTOM HOLE:
LATITUDE: 40.438731° N
LONGITUDE: 104.802218° W

ENTRY POINT:
LATITUDE: 40.437833° N
LONGITUDE: 104.832315° W

LEGEND

- - FOUND/SET SURVEY MONUMENT PER MONUMENT RECORD EXCEPTIONS NOTED.
- - CALCULATED SURVEY MONUMENT POSITION
- (C) - CALCULATED DIMENSION



AARON A. DEMO
Professional Land Surveyor Registration No. 38285
State of Colorado
FOR AND ON BEHALF OF BASELINE ENGINEERING CORP.

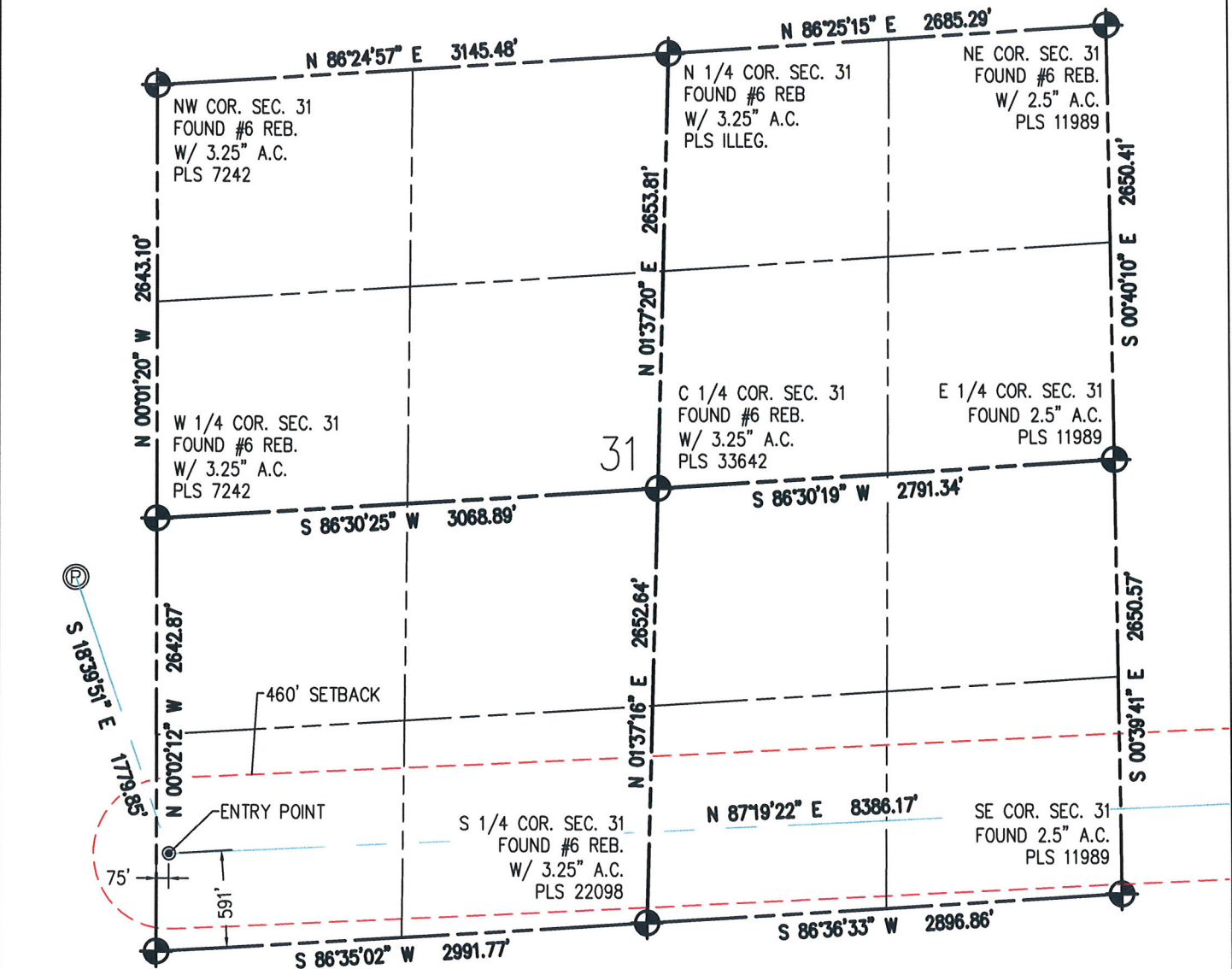
Completed
9/29/2016

PROJECT #: SYN6N66W31-01 (ORR)

WELL LOCATION CERTIFICATE

THIS MAP DOES NOT REPRESENT A BOUNDARY SURVEY

SECTION 36
TOWNSHIP 6 NORTH
RANGE 67 WEST



SW COR. SEC. 31
FOUND #6 REB.
W/ 3.25\" A.C.
PLS 24670

0 1000
Scale 1\" = 1000 ft

NOTES:

- 1) NEAREST CULTURAL ITEMS:
BUILDING: 1609' SW
BUILDING UNIT: 1797' SW
HIGH OCCUPANCY BUILDING UNIT: 5280'+
DESIGNATED OUTSIDE ACTIVITY AREA: 5280'+
PUBLIC ROAD: WELD COUNTY ROAD 25 482' E
ABOVE GROUND UTILITY: 469' E
RAILROAD: 5280'+
PROPERTY LINE: 494' E
- 2) SURFACE USE: GRASSLAND.
- 3) OPERATOR NAME: DARIN ZICAFOOSE.
- 4) THE NEAREST EXISTING WELL IS: STATE M36-9 302' N.
- 5) Bearings shown are grid bearings of the Colorado State Plane Coordinate System, North Zone, North American Datum 1983/2007. The lineal dimensions as contained herein are based upon the "U.S. Survey Foot."
- 6) Ground elevations are based on an observed GPS elevation (NAVD 88 DATUM).
- 7) IMPROVEMENTS: See LOCATION DRAWING for all visible improvements within 500' of disturbed area.



IN ACCORDANCE WITH A REQUEST FROM BRANDON LORENZ - SYNERGY RESOURCES, BASELINE ENGINEERING CORP. HAS DETERMINED THE LOCATION OF THE ORR 14C-32-M TO BE 2257' FSL AND 494' FEL, AS MEASURED AT NINETY (90) DEGREES FROM THE SECTION LINE OF SECTION 36, TOWNSHIP 6 NORTH, RANGE 67 WEST AND THE BOTTOM HOLE LOCATION TO BE 568' FSL AND 2581' FWL OF SECTION 32, TOWNSHIP 6 NORTH, RANGE 66 WEST, 6TH PRINCIPAL MERIDIAN, WELD COUNTY, COLORADO.

I HEREBY CERTIFY THAT THIS WELL LOCATION CERTIFICATE WAS PREPARED BY ME, OR UNDER MY DIRECT SUPERVISION, THAT THE FIELD WORK WAS COMPLETED ON 7/22/2016, THAT IT IS NOT A LAND SURVEY PLAT OR AN IMPROVEMENT SURVEY PLAT, AND THAT IT IS NOT TO BE RELIED UPON FOR ESTABLISHMENT OF FENCE, BUILDING, OR OTHER FUTURE IMPROVEMENT LINES.

SURFACE HOLE:
LATITUDE: 40.442472° N
LONGITUDE: 104.834315° W
PDOP: 1.4
1/4, 1/4: NE1/4SE1/4

BOTTOM HOLE:
LATITUDE: 40.438731° N
LONGITUDE: 104.802218° W

ENTRY POINT:
LATITUDE: 40.437833° N
LONGITUDE: 104.832315° W

LEGEND

- - FOUND/SET SURVEY MONUMENT PER MONUMENT RECORD EXCEPTIONS NOTED.
- - CALCULATED SURVEY MONUMENT POSITION
- (C) - CALCULATED DIMENSION



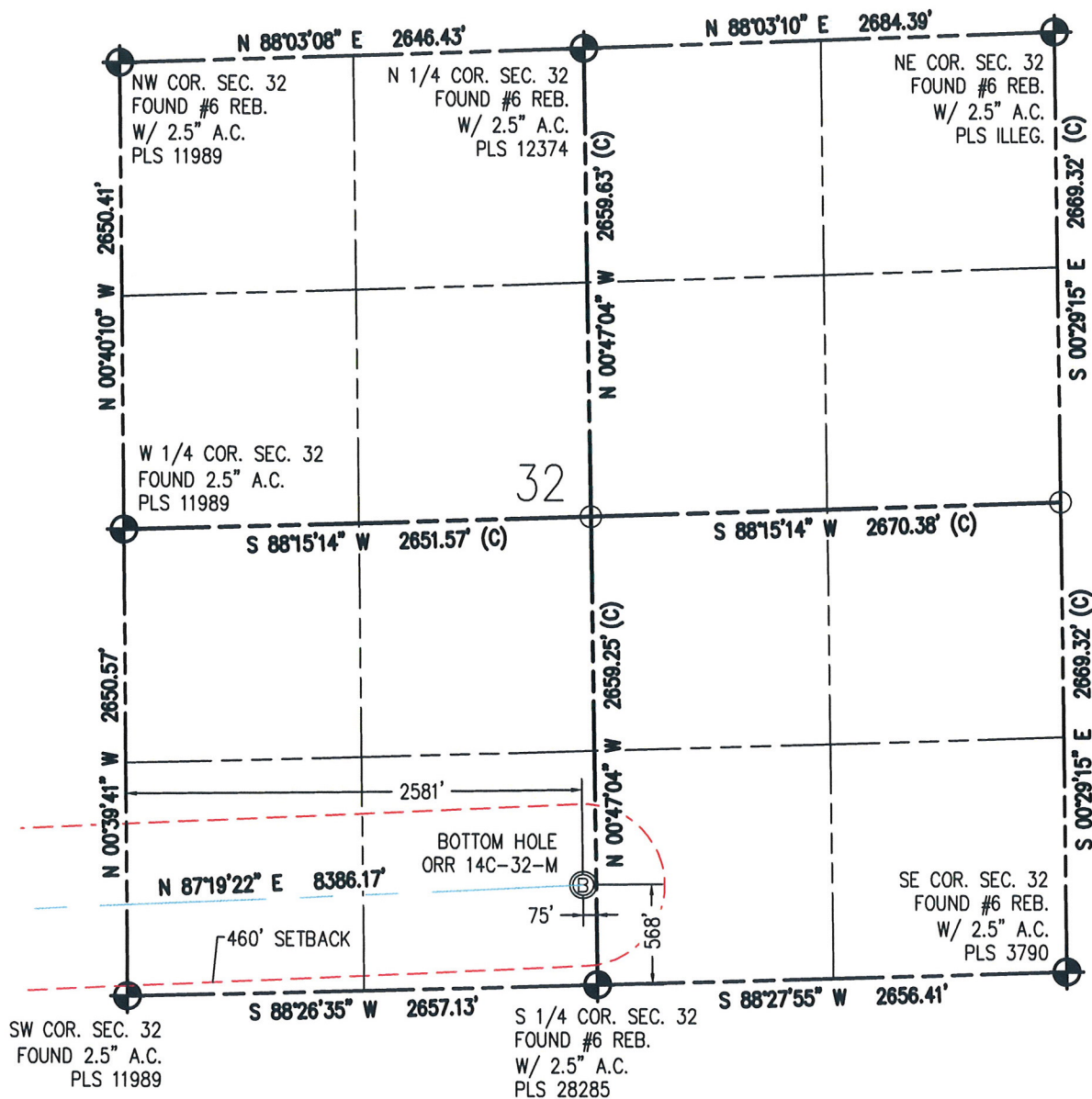
AARON A. DEMO
Professional Land Surveyor Registration No. 38285
State of Colorado
FOR AND ON BEHALF OF BASELINE ENGINEERING CORP.

Completed
9/29/2016

PROJECT #: SYN6N66W31-01 (ORR)

WELL LOCATION CERTIFICATE

THIS MAP DOES NOT REPRESENT A BOUNDARY SURVEY



0 1000
Scale 1" = 1000 ft



IN ACCORDANCE WITH A REQUEST FROM BRANDON LORENZ - SYNERGY RESOURCES, BASELINE ENGINEERING CORP. HAS DETERMINED THE LOCATION OF THE ORR 14C-32-M TO BE 2257' FSL AND 494' FEL, AS MEASURED AT NINETY (90) DEGREES FROM THE SECTION LINE OF SECTION 36, TOWNSHIP 6 NORTH, RANGE 67 WEST AND THE BOTTOM HOLE LOCATION TO BE 568' FSL AND 2581' FWL OF SECTION 32, TOWNSHIP 6 NORTH, RANGE 66 WEST, 6TH PRINCIPAL MERIDIAN, WELD COUNTY, COLORADO.

I HEREBY CERTIFY THAT THIS WELL LOCATION CERTIFICATE WAS PREPARED BY ME, OR UNDER MY DIRECT SUPERVISION, THAT THE FIELD WORK WAS COMPLETED ON 7/22/2016, THAT IT IS NOT A LAND SURVEY PLAT OR AN IMPROVEMENT SURVEY PLAT, AND THAT IT IS NOT TO BE RELIED UPON FOR ESTABLISHMENT OF FENCE, BUILDING, OR OTHER FUTURE IMPROVEMENT LINES.

NOTES:

- 1) NEAREST CULTURAL ITEMS:
BUILDING: 1609' SW
BUILDING UNIT: 1797' SW
HIGH OCCUPANCY BUILDING UNIT: 5280'+
DESIGNATED OUTSIDE ACTIVITY AREA: 5280'+
PUBLIC ROAD: WELD COUNTY ROAD 25 482' E
ABOVE GROUND UTILITY: 469' E
RAILROAD: 5280'+
PROPERTY LINE: 494' E
- 2) SURFACE USE: GRASSLAND.
- 3) OPERATOR NAME: DARIN ZICAFOOSE.
- 4) THE NEAREST EXISTING WELL IS: STATE M36-9 302' N.
- 5) Bearings shown are grid bearings of the Colorado State Plane Coordinate System, North Zone, North American Datum 1983/2007. The lineal dimensions as contained herein are based upon the "U.S. Survey Foot."
- 6) Ground elevations are based on an observed GPS elevation (NAVD 88 DATUM).
- 7) IMPROVEMENTS: See LOCATION DRAWING for all visible improvements within 500' of disturbed area.

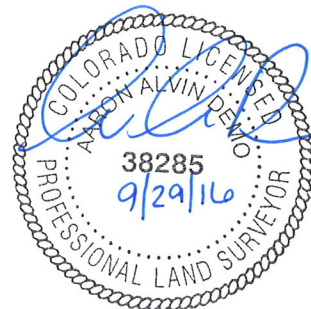
SURFACE HOLE:
LATITUDE: 40.442472' N
LONGITUDE: 104.834315' W
PDOP: 1.4
1/4, 1/4: NE1/4SE1/4

BOTTOM HOLE:
LATITUDE: 40.438731' N
LONGITUDE: 104.802218' W

ENTRY POINT:
LATITUDE: 40.437833' N
LONGITUDE: 104.832315' W

LEGEND

- - FOUND/SET SURVEY MONUMENT PER MONUMENT RECORD EXCEPTIONS NOTED.
- - CALCULATED SURVEY MONUMENT POSITION
- (C) - CALCULATED DIMENSION



AARON A. DEMO
Professional Land Surveyor Registration No. 38285
State of Colorado
FOR AND ON BEHALF OF BASELINE ENGINEERING CORP.

Completed
9/29/2016

PROJECT #: SYN6N66W31-01 (ORR)