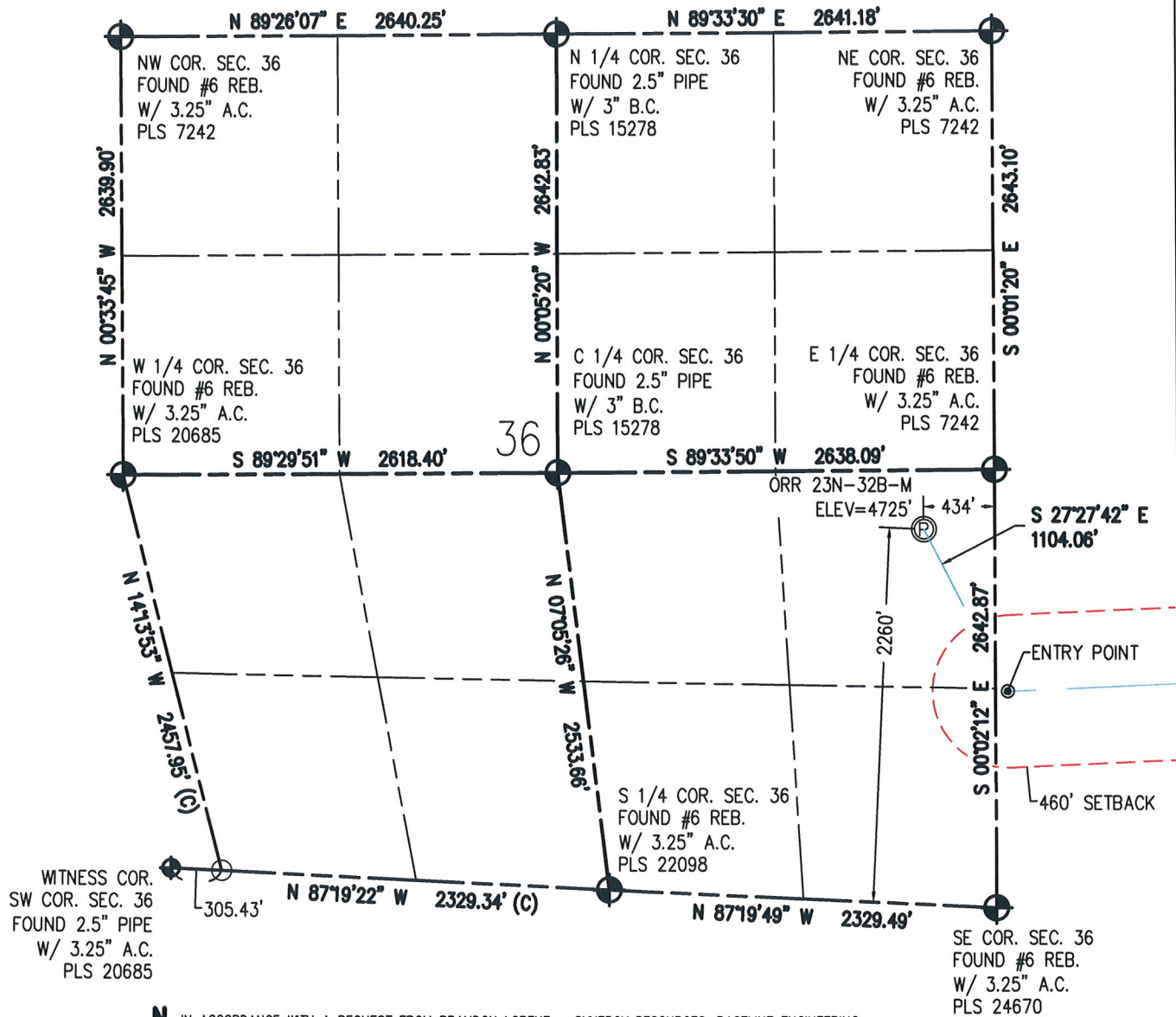


# WELL LOCATION CERTIFICATE

THIS MAP DOES NOT REPRESENT A BOUNDARY SURVEY



IN ACCORDANCE WITH A REQUEST FROM BRANDON LORENZ - SYNERGY RESOURCES, BASELINE ENGINEERING CORP. HAS DETERMINED THE LOCATION OF THE ORR 23N-32B-M TO BE 2260' FSL AND 434' FEL, AS MEASURED AT NINETY (90) DEGREES FROM THE SECTION LINE OF SECTION 36, TOWNSHIP 6 NORTH, RANGE 67 WEST AND THE BOTTOM HOLE LOCATION TO BE 1279' FSL AND 2579' FWL OF SECTION 32, TOWNSHIP 6 NORTH, RANGE 66 WEST, 6TH PRINCIPAL MERIDIAN, WELD COUNTY, COLORADO.

I HEREBY CERTIFY THAT THIS WELL LOCATION CERTIFICATE WAS PREPARED BY ME, OR UNDER MY DIRECT SUPERVISION, THAT THE FIELD WORK WAS COMPLETED ON 7/22/2016, THAT IT IS NOT A LAND SURVEY PLAT OR AN IMPROVEMENT SURVEY PLAT, AND THAT IT IS NOT TO BE RELIED UPON FOR ESTABLISHMENT OF FENCE, BUILDING, OR OTHER FUTURE IMPROVEMENT LINES.

## NOTES:

- 1) NEAREST CULTURAL ITEMS:  
BUILDING: 1647' SW  
BUILDING UNIT: 1839' SW  
HIGH OCCUPANCY BUILDING UNIT: 5280'+  
DESIGNATED OUTSIDE ACTIVITY AREA: 5280'+  
PUBLIC ROAD: WELD COUNTY ROAD 25 422' E  
ABOVE GROUND UTILITY: 409' E  
RAILROAD: 5280'+  
PROPERTY LINE: 434' E
- 2) SURFACE USE: GRASSLAND.
- 3) OPERATOR NAME: DARIN ZICAFOOSE.
- 4) THE NEAREST EXISTING WELL IS: STATE M36-9 247' N.
- 5) Bearings shown are grid bearings of the Colorado State Plane Coordinate System, North Zone, North American Datum 1983/2007. The lineal dimensions as contained herein are based upon the "U.S. Survey Foot."
- 6) Ground elevations are based on an observed GPS elevation (NAVD 88 DATUM).
- 7) IMPROVEMENTS: See LOCATION DRAWING for all visible improvements within 500' of disturbed area.

SURFACE HOLE:  
LATITUDE: 40.442471° N  
LONGITUDE: 104.834099° W  
PDOP: 1.4  
1/4, 1/4: NE1/4SE1/4

BOTTOM HOLE:  
LATITUDE: 40.440681° N  
LONGITUDE: 104.802232° W

ENTRY POINT:  
LATITUDE: 40.439772° N  
LONGITUDE: 104.832297° W

## LEGEND

- - FOUND/SET SURVEY MONUMENT PER MONUMENT RECORD EXCEPTIONS NOTED.
- - CALCULATED SURVEY MONUMENT POSITION
- (C) - CALCULATED DIMENSION



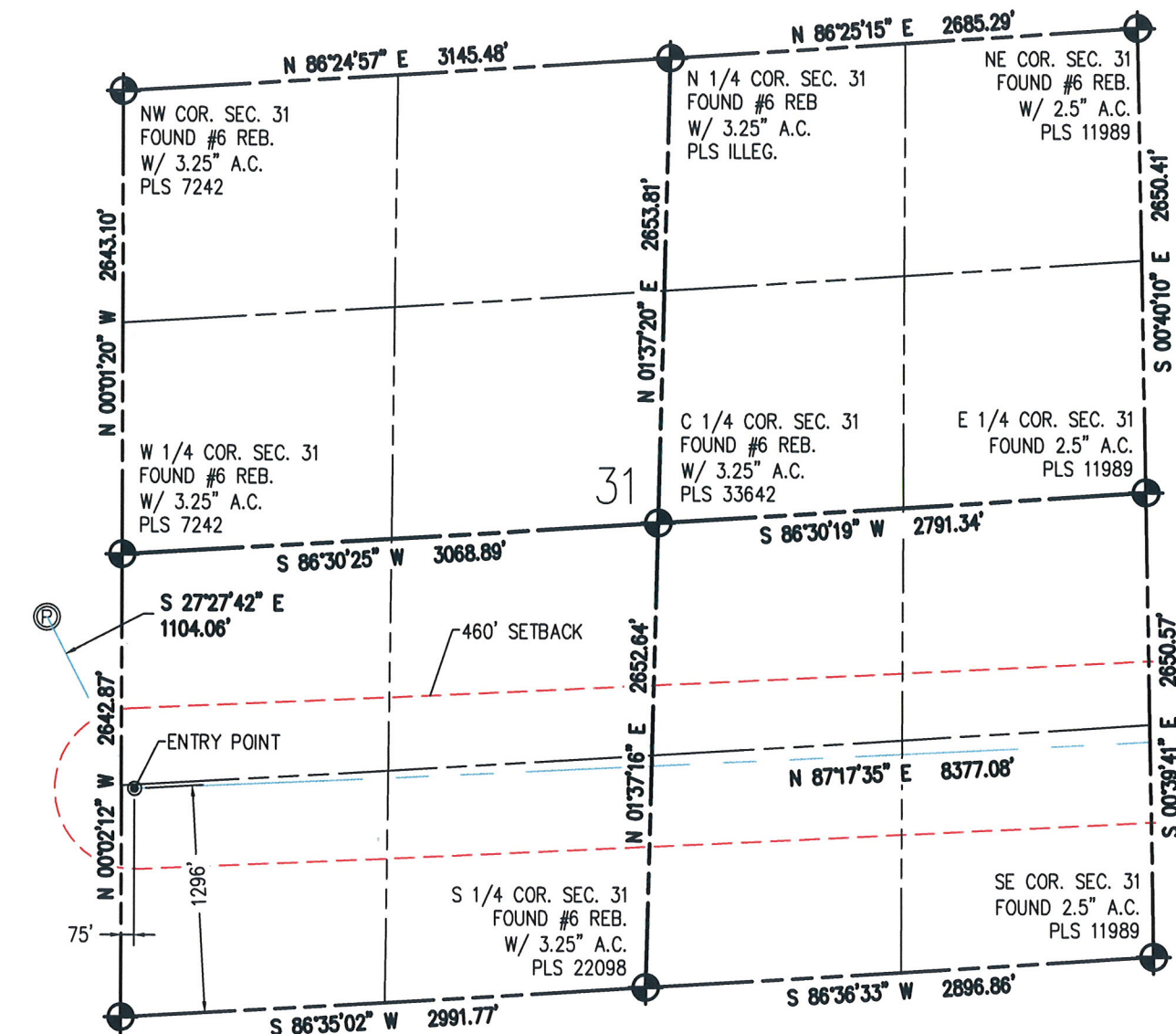
AARON A. DEMO  
Professional Land Surveyor Registration No. 38285  
State of Colorado  
FOR AND ON BEHALF OF BASELINE ENGINEERING CORP.

Completed  
9/29/2016

PROJECT #: SYN6N66W31-01 (ORR)

# WELL LOCATION CERTIFICATE

THIS MAP DOES NOT REPRESENT A BOUNDARY SURVEY



SW COR. SEC. 31  
FOUND #6 REB.  
W/ 3.25\" A.C.  
PLS 24670

0 1000  
Scale 1\" = 1000 ft

## NOTES:

- 1) NEAREST CULTURAL ITEMS:  
BUILDING: 1647' SW  
BUILDING UNIT: 1839' SW  
HIGH OCCUPANCY BUILDING UNIT: 5280'+  
DESIGNATED OUTSIDE ACTIVITY AREA: 5280'+  
PUBLIC ROAD: WELD COUNTY ROAD 25 422' E  
ABOVE GROUND UTILITY: 409' E  
RAILROAD: 5280'+  
PROPERTY LINE: 434' E
- 2) SURFACE USE: GRASSLAND.
- 3) OPERATOR NAME: DARIN ZICAFOOSE.
- 4) THE NEAREST EXISTING WELL IS: STATE M36-9 247' N.
- 5) Bearings shown are grid bearings of the Colorado State Plane Coordinate System, North Zone, North American Datum 1983/2007. The lineal dimensions as contained herein are based upon the "U.S. Survey Foot."
- 6) Ground elevations are based on an observed GPS elevation (NAVD 88 DATUM).
- 7) IMPROVEMENTS: See LOCATION DRAWING for all visible improvements within 500' of disturbed area.



IN ACCORDANCE WITH A REQUEST FROM BRANDON LORENZ - SYNERGY RESOURCES, BASELINE ENGINEERING CORP. HAS DETERMINED THE LOCATION OF THE ORR 23N-32B-M TO BE 2260' FSL AND 434' FEL, AS MEASURED AT NINETY (90) DEGREES FROM THE SECTION LINE OF SECTION 36, TOWNSHIP 6 NORTH, RANGE 67 WEST AND THE BOTTOM HOLE LOCATION TO BE 1279' FSL AND 2579' FWL OF SECTION 32, TOWNSHIP 6 NORTH, RANGE 66 WEST, 6TH PRINCIPAL MERIDIAN, WELD COUNTY, COLORADO.

I HEREBY CERTIFY THAT THIS WELL LOCATION CERTIFICATE WAS PREPARED BY ME, OR UNDER MY DIRECT SUPERVISION, THAT THE FIELD WORK WAS COMPLETED ON 7/22/2016, THAT IT IS NOT A LAND SURVEY PLAT OR AN IMPROVEMENT SURVEY PLAT, AND THAT IT IS NOT TO BE RELIED UPON FOR ESTABLISHMENT OF FENCE, BUILDING, OR OTHER FUTURE IMPROVEMENT LINES.

SURFACE HOLE:  
LATITUDE: 40.442471' N  
LONGITUDE: 104.834099' W  
PDOP: 1.4  
1/4, 1/4: NE1/4SE1/4

BOTTOM HOLE:  
LATITUDE: 40.440681' N  
LONGITUDE: 104.802232' W

ENTRY POINT:  
LATITUDE: 40.439772' N  
LONGITUDE: 104.832297' W

## LEGEND

- - FOUND/SET SURVEY MONUMENT PER MONUMENT RECORD EXCEPTIONS NOTED.
- - CALCULATED SURVEY MONUMENT POSITION
- (C) - CALCULATED DIMENSION



AARON A. DEMO  
Professional Land Surveyor Registration No. 38285  
State of Colorado  
FOR AND ON BEHALF OF BASELINE ENGINEERING CORP.

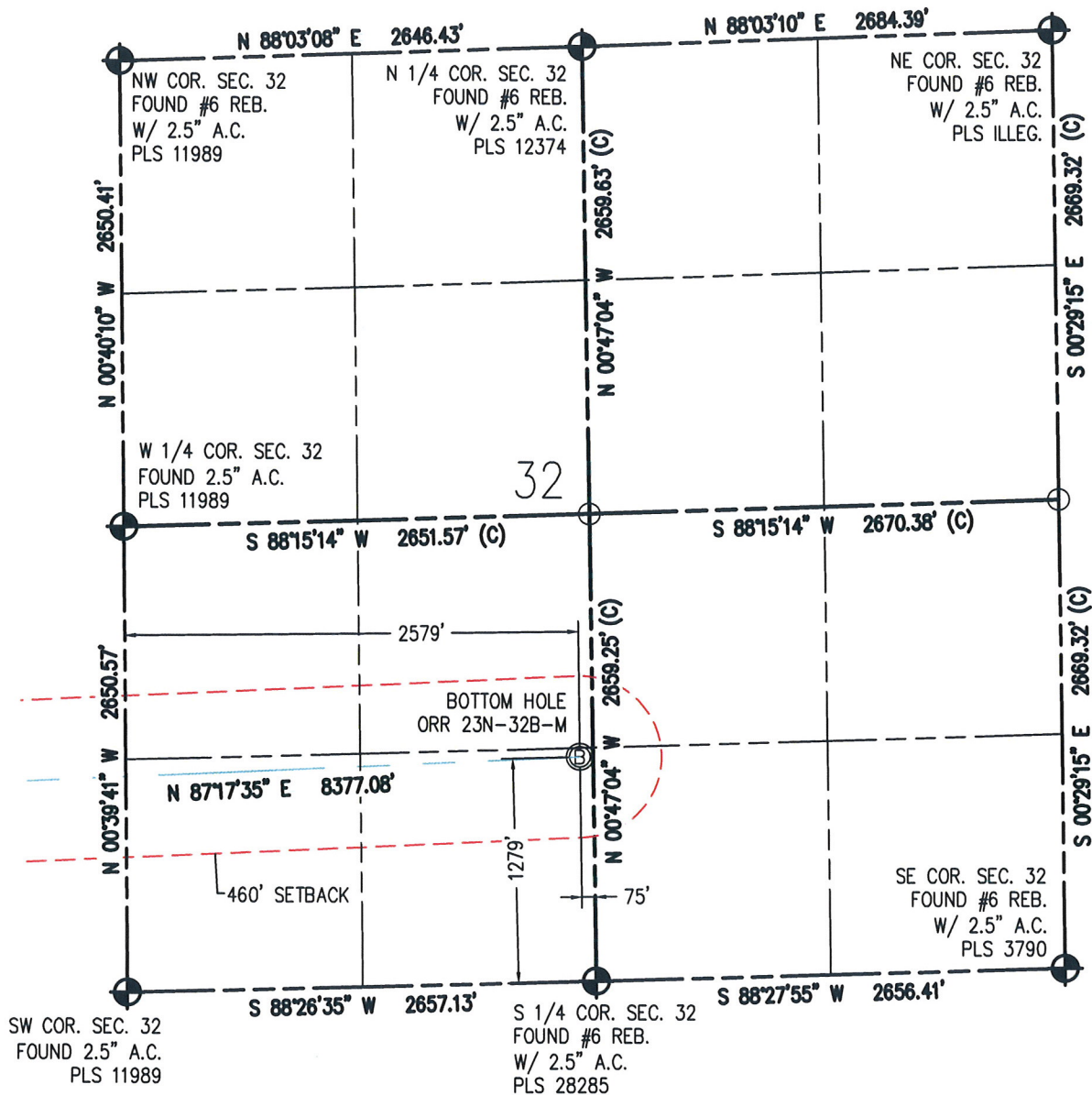
Completed  
9/29/2016

PROJECT #: SYN6N66W31-01 (ORR)



**WELL LOCATION CERTIFICATE**

THIS MAP DOES NOT REPRESENT A BOUNDARY SURVEY



0 1000  
Scale 1" = 1000 ft

**NOTES:**

- 1) NEAREST CULTURAL ITEMS:  
BUILDING: 1647' SW  
BUILDING UNIT: 1839' SW  
HIGH OCCUPANCY BUILDING UNIT: 5280'+  
DESIGNATED OUTSIDE ACTIVITY AREA: 5280'+  
PUBLIC ROAD: WELD COUNTY ROAD 25 422' E  
ABOVE GROUND UTILITY: 409' E  
RAILROAD: 5280'+  
PROPERTY LINE: 434' E
- 2) SURFACE USE: GRASSLAND.
- 3) OPERATOR NAME: DARIN ZICAFOOSE.
- 4) THE NEAREST EXISTING WELL IS: STATE M36-9 247' N.
- 5) Bearings shown are grid bearings of the Colorado State Plane Coordinate System, North Zone, North American Datum 1983/2007. The lineal dimensions as contained herein are based upon the "U.S. Survey Foot."
- 6) Ground elevations are based on an observed GPS elevation (NAVD 88 DATUM).
- 7) IMPROVEMENTS: See LOCATION DRAWING for all visible improvements within 500' of disturbed area.

IN ACCORDANCE WITH A REQUEST FROM BRANDON LORENZ - SYNERGY RESOURCES, BASELINE ENGINEERING CORP. HAS DETERMINED THE LOCATION OF THE ORR 23N-32B-M TO BE 2260' FSL AND 434' FEL, AS MEASURED AT NINETY (90) DEGREES FROM THE SECTION LINE OF SECTION 36, TOWNSHIP 6 NORTH, RANGE 67 WEST AND THE BOTTOM HOLE LOCATION TO BE 1279' FSL AND 2579' FWL OF SECTION 32, TOWNSHIP 6 NORTH, RANGE 66 WEST, 6TH PRINCIPAL MERIDIAN, WELD COUNTY, COLORADO.

I HEREBY CERTIFY THAT THIS WELL LOCATION CERTIFICATE WAS PREPARED BY ME, OR UNDER MY DIRECT SUPERVISION, THAT THE FIELD WORK WAS COMPLETED ON 7/22/2016, THAT IT IS NOT A LAND SURVEY PLAT OR AN IMPROVEMENT SURVEY PLAT, AND THAT IT IS NOT TO BE RELIED UPON FOR ESTABLISHMENT OF FENCE, BUILDING, OR OTHER FUTURE IMPROVEMENT LINES.

SURFACE HOLE:  
LATITUDE: 40.442471° N  
LONGITUDE: 104.834099° W  
PDOP: 1.4  
1/4, 1/4: NE1/4SE1/4

ENTRY POINT:  
LATITUDE: 40.439772° N  
LONGITUDE: 104.832297° W

BOTTOM HOLE:  
LATITUDE: 40.440681° N  
LONGITUDE: 104.802232° W

**LEGEND**

- - FOUND/SET SURVEY MONUMENT PER MONUMENT RECORD EXCEPTIONS NOTED.
- - CALCULATED SURVEY MONUMENT POSITION
- (C) - CALCULATED DIMENSION



AARON A. DEMO  
Professional Land Surveyor Registration No. 38285  
State of Colorado  
FOR AND ON BEHALF OF BASELINE ENGINEERING CORP.

Completed  
9/29/2016

PROJECT #: SYN6N66W31-01 (ORR)