



Photo#1: View of Location from Entry Road to NE

November 16, 2016

Inspection Photos: TEP Crystal Creek API#045-06476



Photo#2: Overview of Location to SE

November 16, 2016

Inspection Photos: TEP Crystal Creek API#045-06476

Photos# 3&4:

Noxious Weeds on Location; Houndstongue & Thistle.



November 16, 2016

Inspection Photos: TEP Crystal Creek
API#045-06476

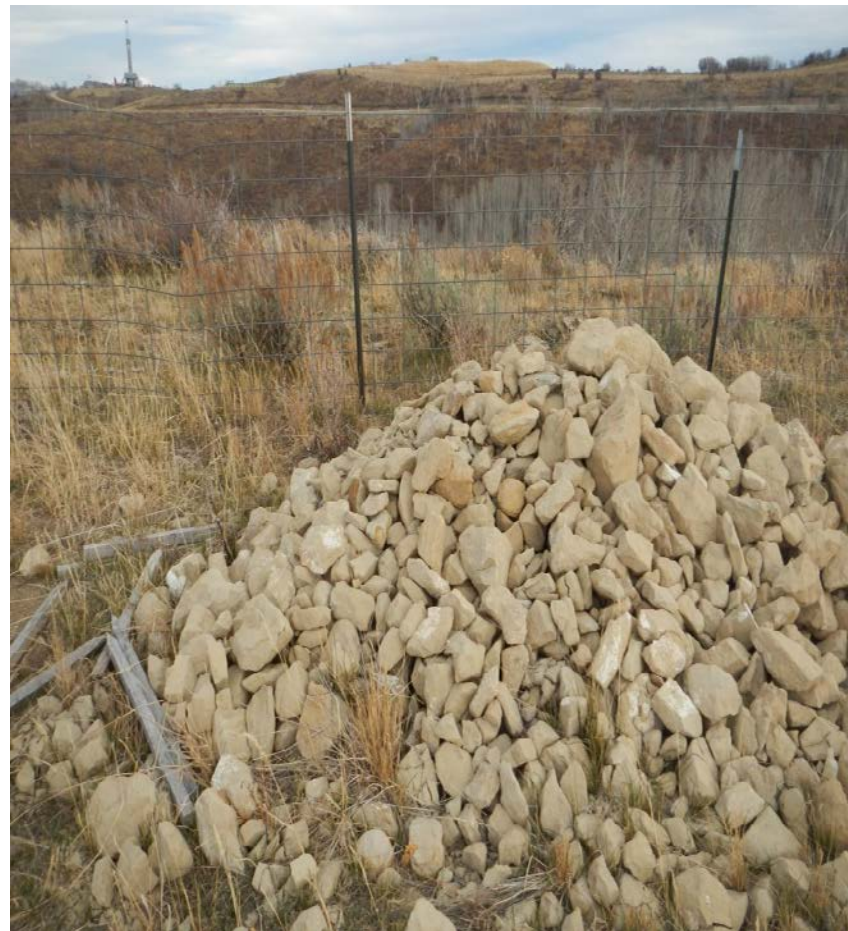
Photos#5&6:
Culverts Housing Lines/Valves are open



November 16, 2016

Inspection Photos: TEP Crystal Creek
API#045-06476

Photos#7&8:
Debris & Materials on Location



November 16, 2016

Inspection Photos: TEP Crystal Creek
API#045-06476



Photo#9: Facilities /Equipment on Location.

November 16, 2016

Inspection Photos: TEP Crystal Creek API#045-06476



Photo#10: Large Pit Located to North of Well.

November 16, 2016

Inspection Photos: TEP Crystal Creek API#045-06476