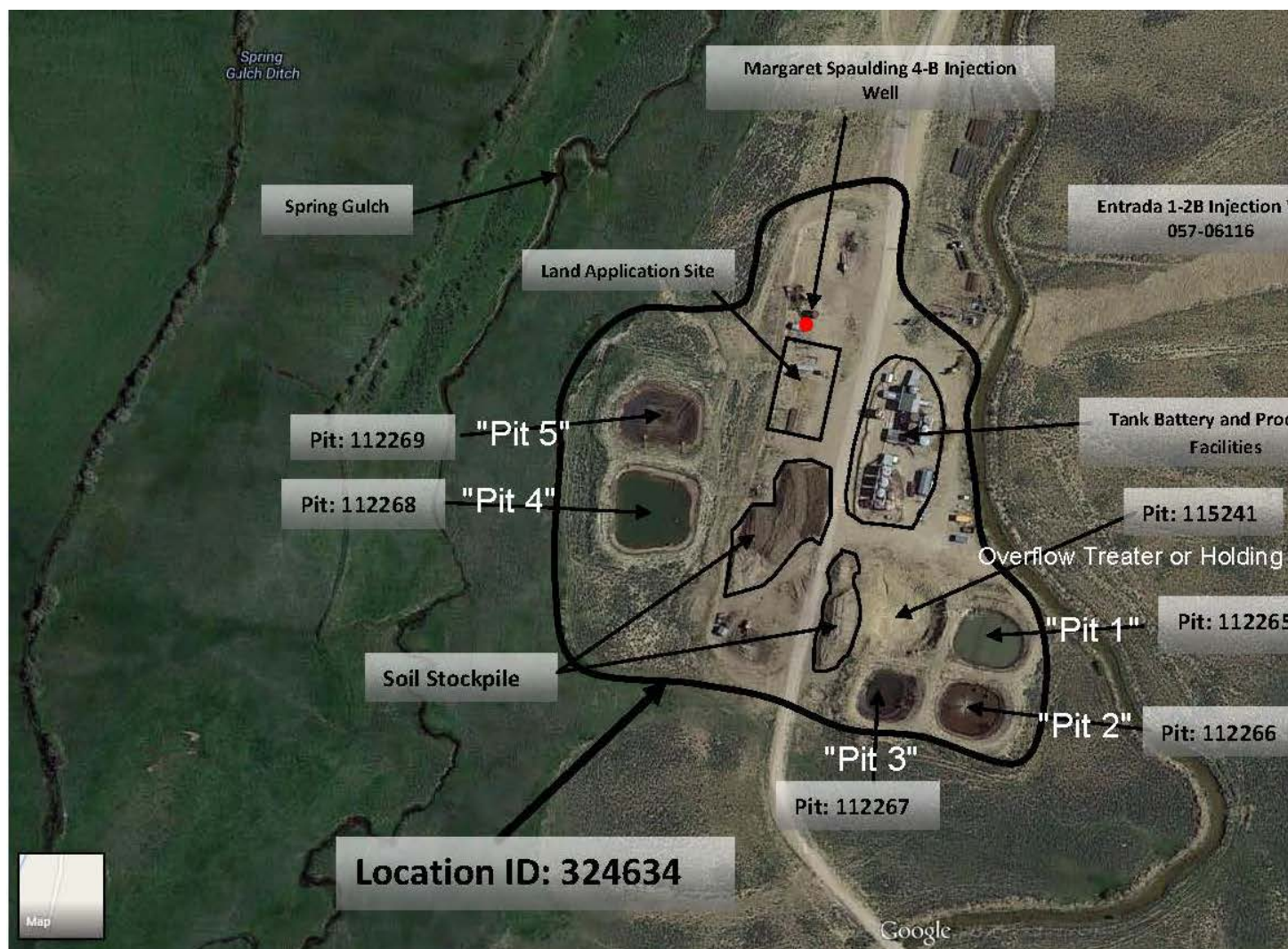


October 17, 2016 COGCC Environmental Field Inspection of CM Productions LLC Margaret Spaulding 2  
(Location ID: 324599, API 057-06273, 057-06062, 057-06080)



Facility Overview.

October 17, 2016 COGCC Environmental Field Inspection of CM Productions LLC Margaret Spaulding 2  
(Location ID: 324599, API 057-06273, 057-06062, 057-06080)



Overflow Treater Pit, Facility 115241.



Overflow Treater Pit, Facility 115241.



Pit 1, Facility 112265.



October 17, 2016 COGCC Environmental Field Inspection of CM Productions LLC Margaret Spaulding 2  
(Location ID: 324599, API 057-06273, 057-06062, 057-06080)



Pit 1, Facility 112265.



Pit 2, Facility 112266.



Pit 2, Facility 112266.

October 17, 2016 COGCC Environmental Field Inspection of CM Productions LLC Margaret Spaulding 2  
(Location ID: 324599, API 057-06273, 057-06062, 057-06080)



Pit 2, Facility 112267.



Pit 2, Facility 112267.



Pit 4, Facility 112267.



October 17, 2016 COGCC Environmental Field Inspection of CM Productions LLC Margaret Spaulding 2  
(Location ID: 324599, API 057-06273, 057-06062, 057-06080)



Pit 4, Facility 112268.



Pit 4, Facility 112268.



Pit 5, Facility 112269.

October 17, 2016 COGCC Environmental Field Inspection of CM Productions LLC Margaret Spaulding 2  
(Location ID: 324599, API 057-06273, 057-06062, 057-06080)



Pit 5, Facility 112269.



NW Corner of Land Treatment area.



Land Treatment area looking east

October 17, 2016 COGCC Environmental Field Inspection of CM Productions LLC Margaret Spaulding 2  
(Location ID: 324599, API 057-06273, 057-06062, 057-06080)



Land Treatment Area.



Former treater pit liner stockpiled.



October 17, 2016 COGCC Environmental Field Inspection of CM Productions LLC Margaret Spaulding 2  
(Location ID: 324599, API 057-06273, 057-06062, 057-06080)



E&P waste stockpile.



E&P waste stockpile.



Looking North along west berm and E&P waste stockpile.



October 17, 2016 COGCC Environmental Field Inspection of CM Productions LLC Margaret Spaulding 2  
(Location ID: 324599, API 057-06273, 057-06062, 057-06080)



Electrical transformer. Note meter removed.



Electrical transformer.

October 17, 2016 COGCC Environmental Field Inspection of CM Productions LLC Margaret Spaulding 2  
(Location ID: 324599, API 057-06273, 057-06062, 057-06080)



Platform for UIC pump. Note: pipe risers.



Electrical panels.



057-06062 possible bull plug leak.



October 17, 2016 COGCC Environmental Field Inspection of CM Productions LLC Margaret Spaulding 2  
(Location ID: 324599, API 057-06273, 057-06062, 057-06080)



057-06080 Oil with sump and absorbent boom wrapped around well head.



057-06021 Noffsinger 1-C.



057-06021 Noffinger 1-C tank battery.

Tank # 4, #3, and #2. Tank #5 right side of photo.

October 17, 2016 COGCC Environmental Field Inspection of CM Productions LLC Margaret Spaulding 2  
(Location ID: 324599, API 057-06273, 057-06062, 057-06080)



Electrical panels.



Office with "CM" and "Proven" and emergency contact number removed from signs on the office door. Note: Lock removed by others.



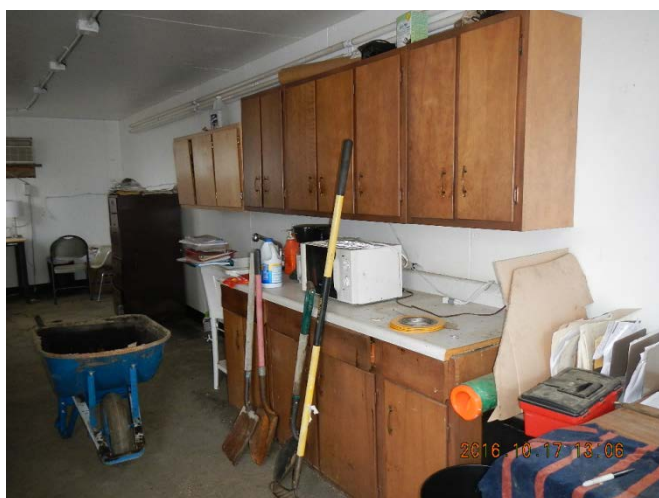
October 17, 2016 COGCC Environmental Field Inspection of CM Productions LLC Margaret Spaulding 2  
(Location ID: 324599, API 057-06273, 057-06062, 057-06080)



Interior of office.



Interior of office.



Interior of office.

October 17, 2016 COGCC Environmental Field Inspection of CM Productions LLC Margaret Spaulding 2  
(Location ID: 324599, API 057-06273, 057-06062, 057-06080)



Equipment storage near barn/garage



Equipment storage near barn/garage.



Equipment storage near barn/garage.



October 17, 2016 COGCC Environmental Field Inspection of CM Productions LLC Margaret Spaulding 2  
(Location ID: 324599, API 057-06273, 057-06062, 057-06080)



Interior of barn/garage.



Interior of barn/garage.