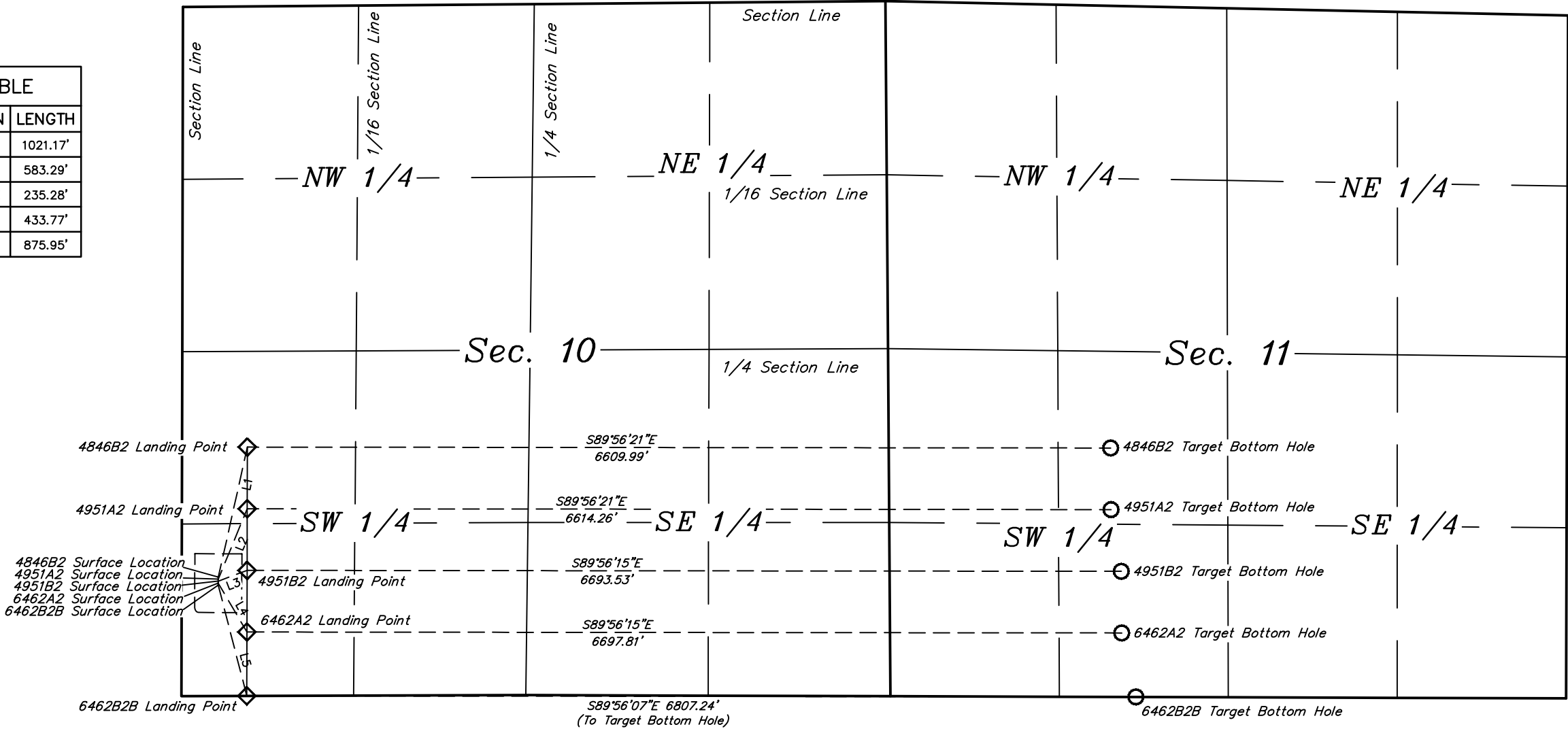




LEGEND:
◊ = LANDING POINT.
○ = TARGET BOTTOM HOLE.



LINE TABLE		
LINE	DIRECTION	LENGTH
L1	N12°34'13"E	1021.17'
L2	N22°17'18"E	583.29'
L3	N69°24'40"E	235.28'
L4	S30°21'29"E	433.77'
L5	S14°25'23"E	875.95'



REV: 2 11-02-16 K.B. (SL, LP, TBH & PAD CHANGE)



UELS, LLC
Corporate Office * 85 South 200 East
Vernal, UT 84078 * (435) 789-1017

BILL BARRETT CORPORATION

WILL TRUST 6-62-10 11 SWSW PAD
SW 1/4 SW 1/4, SECTION 10, T6N, R62W, 6th P.M.
WELD COUNTY, COLORADO

SURVEYED BY	DARREN SHANKS	10-17-16	SCALE
DRAWN BY	T.B.	03-17-16	1" = 1000'
MULTI-WELL PLAN			FIGURE #5