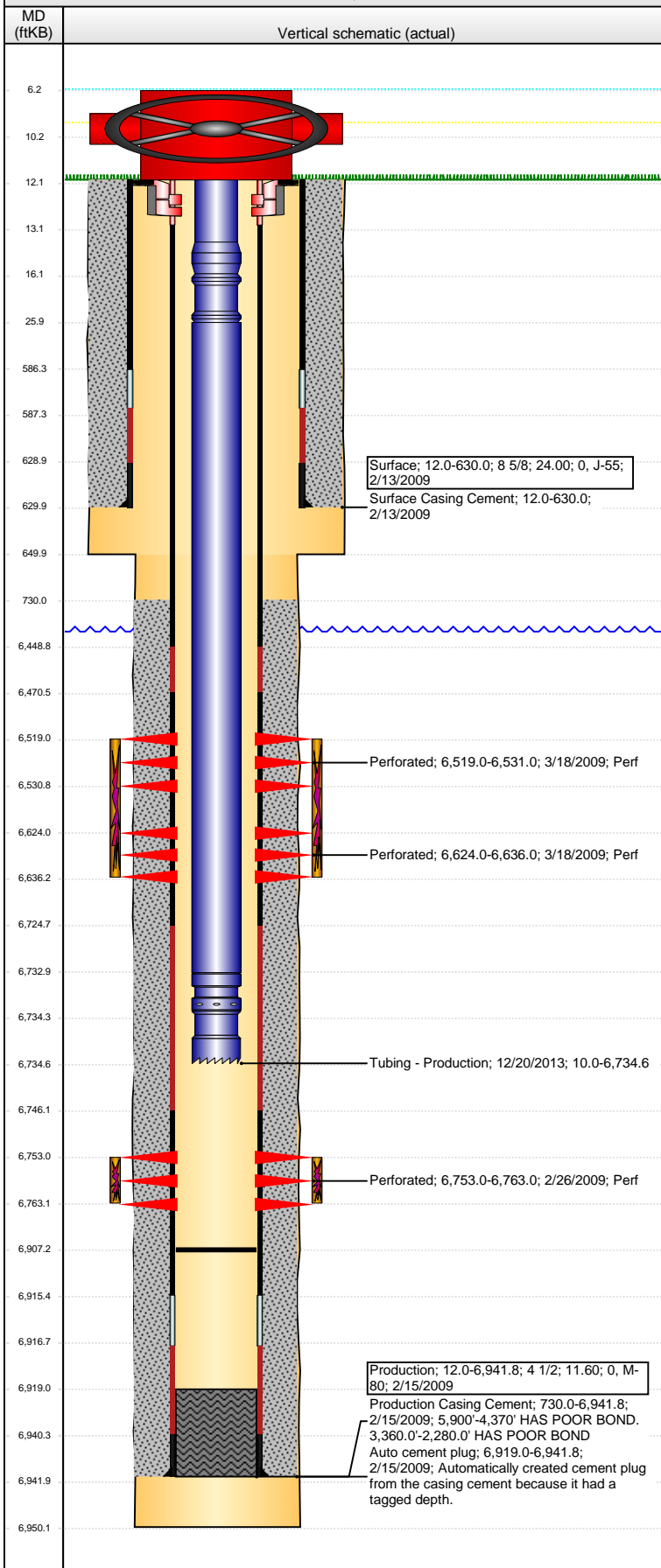


Well Name: BASHOR STATE AA16-04

VERTICAL - ORIGINAL HOLE, 11/17/2016 11:29:36 AM



Well Header

API 05-123-29253	Business Unit DJ BASIN	District 15	Well Config VERTICAL
Original KB Elevation (ft) 4,696	KB - GL / MSL (ftKB) 12.00	Spud Date 2/12/2009	P & A Date

Comment

Directions To Well
BASHOR STATE AA16-04: WCR 67 & HWY 392, SOUTHWEST 7/10ths, SOUTHWEST AROUND FIELD, EAST INTO LOCATION.

Congressional Location

Quarter 3 NW	Quarter 4 NW	Section 16	Township 6 N	Twship N/S Dir 63 W	Range 63 W
-----------------	-----------------	---------------	-----------------	------------------------	---------------

Bottom Hole Location

North-South Distance (ft)	From N or S Line	East-West Distance (ft)	From E or W Line
---------------------------	------------------	-------------------------	------------------

Plug Back Total Depths

Date	Depth (ftKB)	Method	Com
2/15/2009	6,919.0	CASING TALLY	TOP OF FLOAT COLLAR
2/20/2009	6,907.0	CASED HOLE LOG	DEPTH LOGGER ON CBL
3/28/2009	6,919.0	TAG	DRILL PLUG AND CLEAN OUT TO 6919'
2/12/2013	6,907.0	TAG	

Wellbore Sections

Section Des	Size (in)	Act Top, MD (ftKB)	Act Btm, MD (ftKB)
SURFACE	12 1/4	12	650
PRODUCTION	7 7/8	650	6,950

Zone Statuses

Zone Name	Status Date	Status	Fluid Type	Job	Prod Method
NIOBRARA	3/20/2009	PR		DRILLING/CO...	
CODELL	3/20/2009	PR		DRILLING/CO...	

Casing Strings

Surface, 630.0ftKB

Casing Description	Run Date	OD (in)	Wt/Len (l...)	Grade	Top, MD (ft...)	MD (ftKB)
Surface	2/13/2009	8 5/8	24.00	J-55	12.0	630.0

Production, 6,941.8ftKB

Casing Description	Run Date	OD (in)	Wt/Len (l...)	Grade	Top, MD (ft...)	MD (ftKB)
Production	2/15/2009	4 1/2	11.60	M-80	12.0	6,941.8

Cement

Description	Top Depth (ftKB)	Bottom Depth (ftKB)
Surface Casing Cement	12.0	630.0
Description	Top Depth (ftKB)	Bottom Depth (ftKB)
Production Casing Cement	730.0	6,941.8

Tubing Strings

Tubing Description	Run Date	String...	ID (in)	Wt (lb/ft)	Grade	Len (ft)	Set De...
Tubing - Production	3/28/2009	2 3/8	1.995	4.70	J-55	6,726.63	6,732.2
Tubing - Production	2/13/2013	2 3/8	1.995	4.70	J-55	5,823.76	5,834.7
Tubing - Production	12/20/2013	2 3/8	1.995	4.70	J-55	6,724.55	6,732.2

Tubing Components

Item Des	OD (in)	Wt (lb/ft)	Grade	Jts	Len (ft)	Btm (ftKB)	Btm (TVD) (ftKB)
Pup Joint	2 3/8	4.70	J-55	1	6.00	16.1	
Pup Joint	2 3/8	4.70	L-80	1	10.00	26.1	
Tubing	2 3/8	4.70	J-55	216	6,706.95	6,733.0	
Pump Seating Nipple	2 3/8	1.10	N-80	1	1.10	6,734.1	6,731.7
Notched collar	2 3/8	1.10	N-80	1	0.50	6,734.6	6,732.2

Perforation Data

Zone	Bnch/St g	Entered Shot Total	Top (ftKB)	Btm (ftKB)	Date
NIOBRARA, ORIGINAL HOLE	A	24	6,519.00	6,531.00	3/18/2009
NIOBRARA, ORIGINAL HOLE	B	24	6,624.00	6,636.00	3/18/2009
CODELL, ORIGINAL HOLE		40	6,753.00	6,763.00	2/26/2009

Well Name: BASHOR STATE AA16-04

VERTICAL - ORIGINAL HOLE, 11/17/2016 11:29:39 AM

Stimulations & Treatments

Date	Zone	Primary Job Type
3/18/2009	CODELL, ORIGINAL HOLE	DRILLING/COMPLETION - ORIGINAL

Technical Result	Tech Result Details	Tech Result Note
Success	According to Plan	

Comment
(CODELL): REVERSE STEP RATE RESULTS PO 9 NWB 332 PSI WB 200 PSI PPF 520 PSI FOR A TOTAL OF 1052 PSI OF FRICTION STARTED BACK UP AND RAN ONE WB OF X-LINKED PAD ONE WB OF 0.5 PSA 20/40 AND BACK TO X-LINKED PAD TO TRY AND CLEAN UP PERFS TREATMENT WELL AVG VISC 28.2 CPS AVG TEMP 65.5F AVG PH 10.1 POST JOB 5 MINUTE OF 3276 PSI

Date	Zone	Primary Job Type
3/18/2009	NIOBRARA, ORIGINAL HOLE	DRILLING/COMPLETION - ORIGINAL

Technical Result	Tech Result Details	Tech Result Note
Success	According to Plan	

Comment
(NIOBRARA): TREATMENT WENT WELL NO ISSUES TO REPORT AVG VISC 23.4 CPS AVG TEMP 66F AVG PH 10.19 POST JOB 5 MINUTE O 3173 PSI

Other In Hole

Run Date	Des	OD (in)	Top (ftKB)	Btm (ftKB)

Logs

Date	Type	Top, MD (ftKB)	Btm, MD (ftKB)
2/15/2009	Caliper/comp. Density/Neutron/GR/SP/ML	2,650.0	6,957.0
2/15/2009	DIL/GR/SP/Caliper	630.0	6,957.0
2/20/2009	CBL/CCL/GR	730.0	6,942.0
11/4/2010	GYRO	12.0	7,000.0

