

WHITING OIL & GAS CORP.

WELL LOCATION, RAZOR FED 29L-3204,
LOCATED AS SHOWN IN THE NE 1/4
SW 1/4 OF SECTION 29, T10N, R58W,
6th P.M. WELD COUNTY, COLORADO.



◆ = SECTION CORNERS LOCATED

NOTES:

1. Bearings are based on Global Positioning Satellite Observations.
2. G.P.S. Operator: C.D. Slauch, (PDOP) = 1.6
3. Monument Coordinates are Reported in NAD 83.

BASIS OF ELEV; Elevations are based
on an N.G.S. OPUS Correction. LOCATION:
LAT. 40°46'03.41" LONG. 103°46'26.97" (Tristate
Aluminum Cap) NAVD 88 Elev. 4750.22'

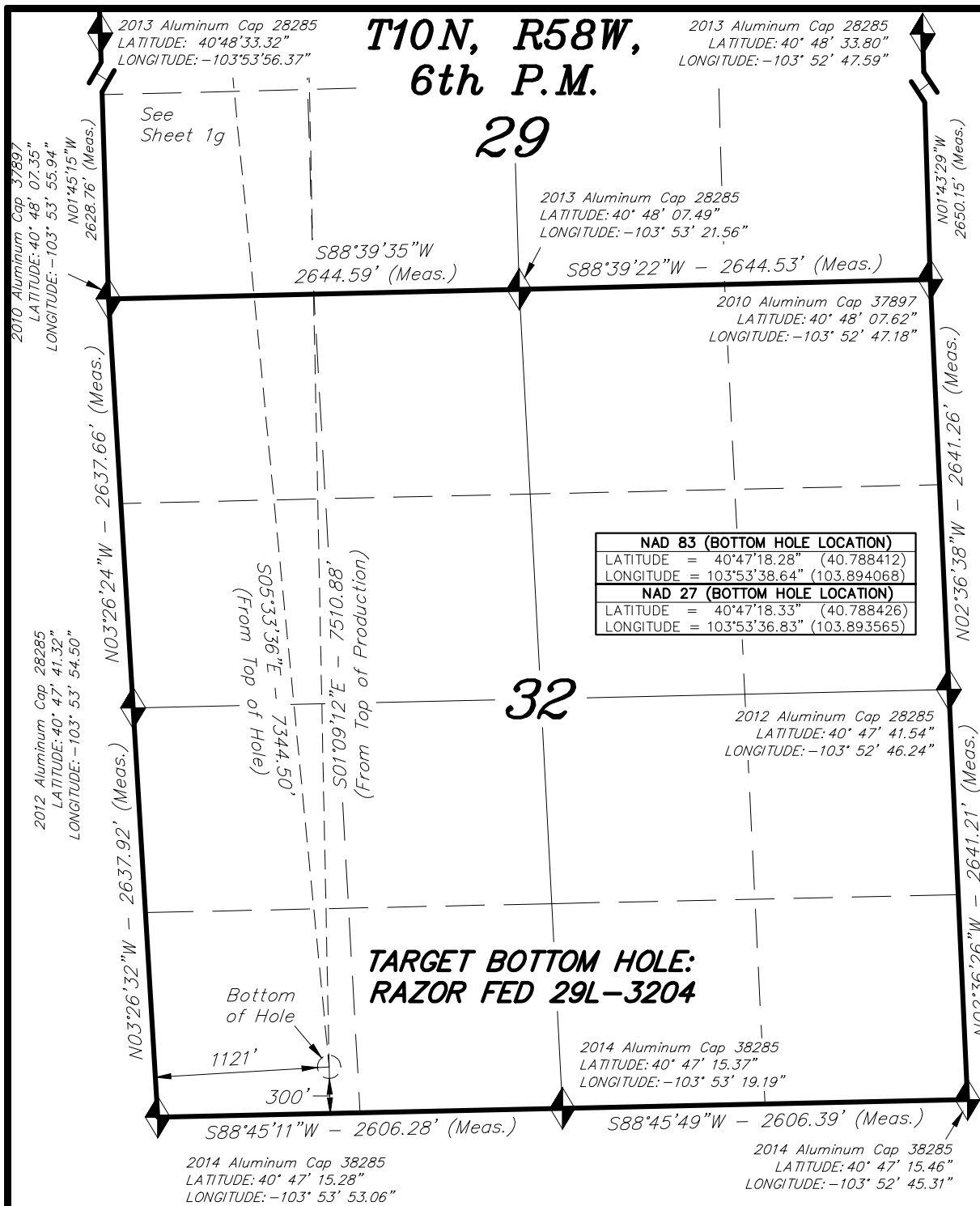
THIS IS TO CERTIFY THAT THE ABOVE PLAT WAS
PREPARED FROM FIELD NOTES OF REAL SURVEYS
MADE BY ME OR UNDER MY SUPERVISION. THE
LOCATION HAS BEEN STAKED ON THE GROUND AS
SHOWN ON THE PLAT, AND THAT THE SAME ARE
TRUE AND CORRECT TO THE BEST OF MY
KNOWLEDGE AND BELIEF. 07-12-16
30125

REGISTERED LAND SURVEYOR
REGISTRATION # 30125
STATE OF COLORADO

TRI STATE LAND SURVEYING & CONSULTING

180 NORTH VERNAL AVE. - VERNAL, UTAH 84078
(435) 781-2501

DATE SURVEYED: 06-09-16	SURVEYED BY: C.D.S.	SHEET 1g
DATE DRAWN: 07-12-16	DRAWN BY: F.T.M.	
REVISED:	SCALE: 1" = 1000'	



WHITING OIL & GAS CORP.

TARGET BOTTOM HOLE,
RAZOR FED 29L-3204, LOCATED
AS SHOWN IN THE SW 1/4 SW 1/4
OF SECTION 32, T10N, R58W, 6th
P.M. WELD COUNTY, COLORADO.



◆ = SECTION CORNERS LOCATED

NOTES:

1. Bearings are based on Global Positioning Satellite Observations.
2. Monument Coordinates are Reported in NAD 83.

THIS IS TO CERTIFY THAT THE ABOVE PLAT WAS PREPARED FROM FIELD NOTES OF REAL SURVEYS MADE BY ME OR UNDER MY SUPERVISION. THE LOCATION HAS BEEN STAKED ON THE GROUND AS SHOWN ON THE PLAT, AND THAT THE SAME ARE TRUE AND CORRECT TO THE BEST OF MY KNOWLEDGE AND BELIEF.

07-12-16
30125
REGISTERED LAND SURVEYOR
REGISTRATION NO. 30125
STATE OF COLORADO

TRI STATE LAND SURVEYING & CONSULTING

180 NORTH VERNAL AVE. - VERNAL, UTAH 84078
(435) 781-2501

DATE SURVEYED: 06-09-16	SURVEYED BY: C.D.S.	SHEET 1gg
DATE DRAWN: 07-12-16	DRAWN BY: F.T.M.	
REVISED:	SCALE: 1" = 1000'	