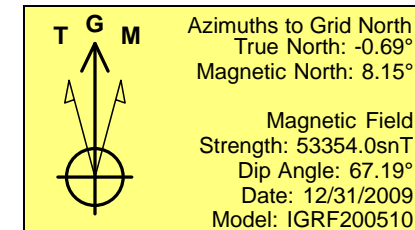
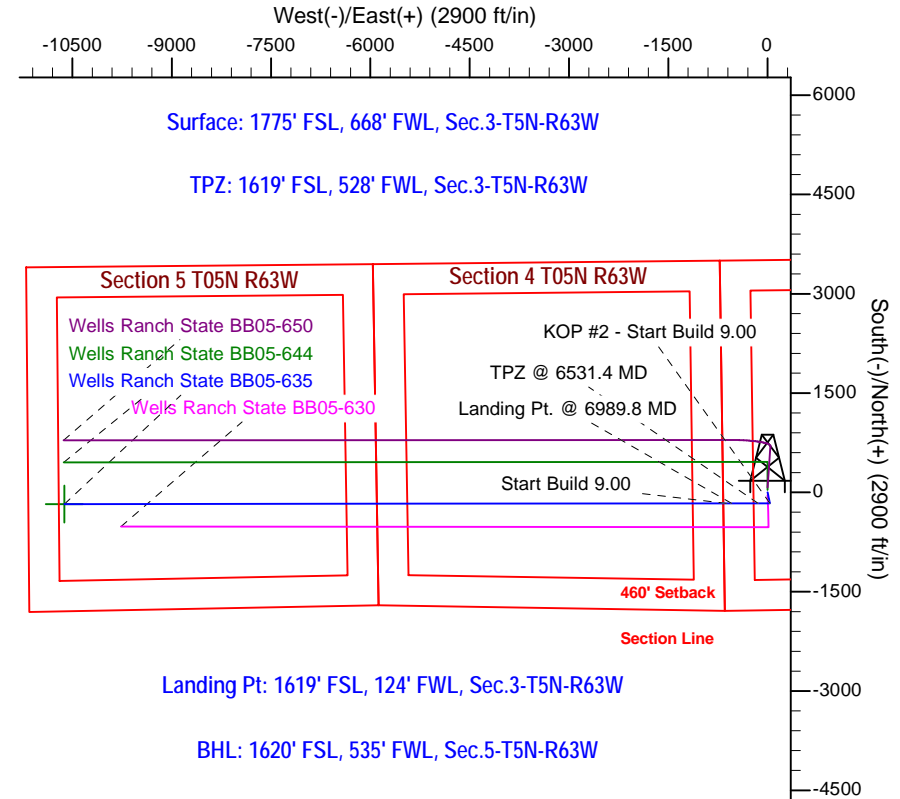
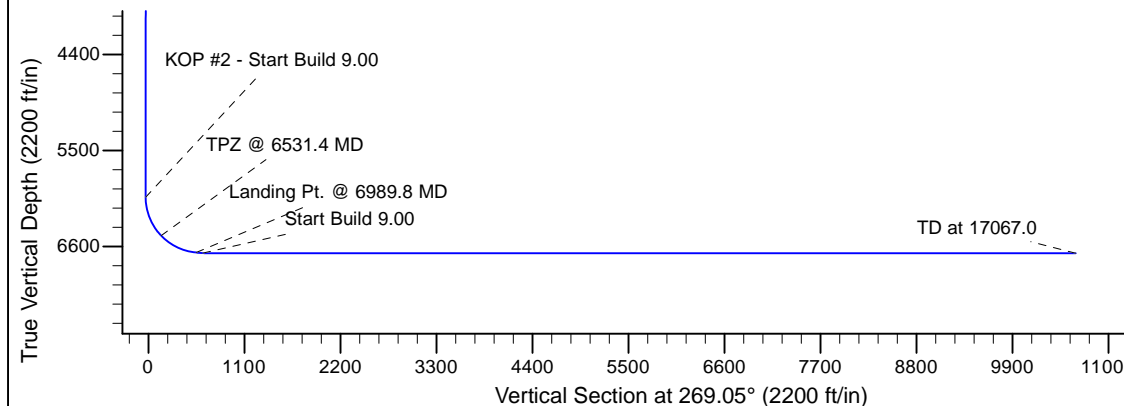
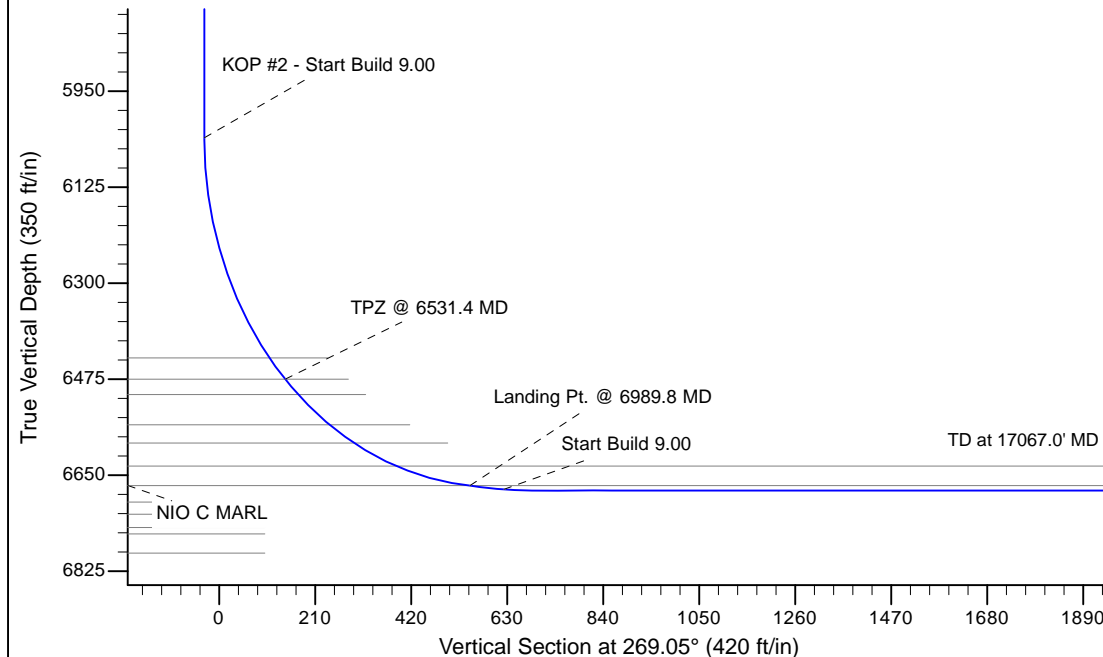


Project: Wattenberg Field  
 Site: BB (Sec.3-T05N-R63W) Weld County, CO  
 Well: Wells Ranch State BB05-635  
 Wellbore: Original Drilling  
 Design: APD - Rev 1

# Northern Region Drilling - Working

Geodetic System: US State Plane 1983  
 Datum: North American Datum 1983  
 Ellipsoid: GRS 1980  
 Zone: Colorado Northern Zone  
 System Datum: Mean Sea Level

SECTION DETAILS										
Sec	MD	Inc	Azi	TVD	+N/-S	+E/-W	Dleg	TFace	VSec	Target
1	0.0	0.00	0.00	0.0	0.0	0.0	0.00	0.00	0.0	
2	2500.0	0.00	0.00	2500.0	0.0	0.0	0.00	0.00	0.0	
3	2900.4	8.01	168.02	2899.1	-27.3	5.8	2.00	168.02	-5.3	
4	3710.1	8.01	168.02	3700.9	-137.7	29.2	0.00	0.00	-26.9	
5	4110.5	0.00	0.00	4100.0	-165.0	35.0	2.00	180.00	-32.2	
6	6045.3	0.00	0.00	6034.8	-165.0	35.0	0.00	0.00	-32.2	
7	6989.8	85.00	269.94	6669.0	-165.6	-546.1	9.00	269.94	548.8	
8	7064.8	85.00	269.94	6675.6	-165.7	-620.9	0.00	0.00	623.5	
9	7120.3	90.00	269.94	6678.0	-165.8	-676.3	9.00	0.00	679.0	
10	17067.0	90.00	269.94	6678.0	-176.9	-10623.0	0.00	0.00	10624.4	Wells Ranch State BB05-635 BHL 1620'FSL, 535'FWL



WELL DETAILS: Wells Ranch State BB05-635					
		Ground Level: 4724.0			
0.0	0.0	Northing	Easting	Latitude	Longitude
		1399836.19	3297845.50	40.426020	-104.430140
Plan: APD - Rev 1 (Wells Ranch State BB05-635/Original Drilling)					
Created By: Shailey Jewell			Date: 8:50, July 15 2016		

OK to submit with 2A as per Noble Drilling  
 7/15/2016 8:53