

**NOBLE ENERGY INC.**  
**GUNTHER 18-02**  
**SENE 18-5N-64W**  
**1986 FNL & 660 FEL**  
**WELD COUNTY, CO**  
**Wattenberg**  
**CURRENT WELLBORE SCHEMATIC**  
**with PROPOSED P&A**  
**11/8/2016**

API: 05-123-12263

GL Elev: 4620'  
 KB Elev: 4630'

Spud Date: 2/13/1985

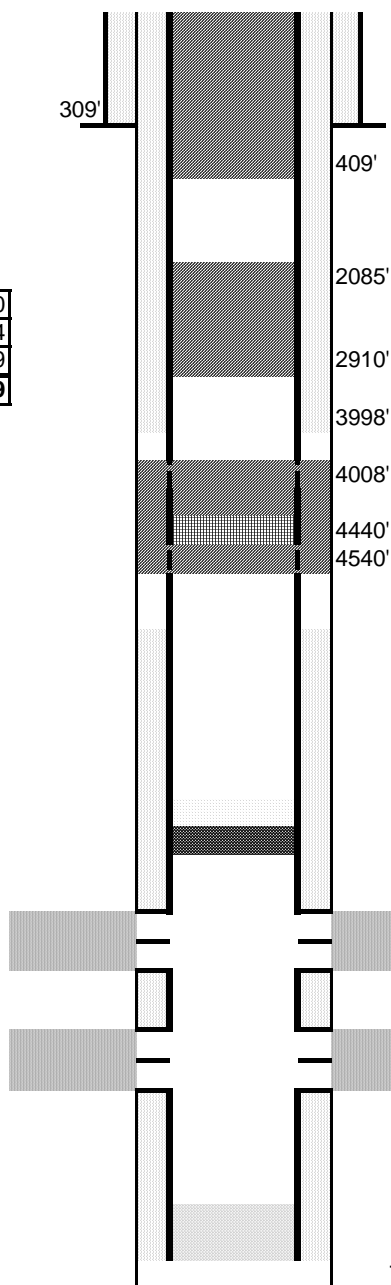
**Surface Casing:**  
 8.625" 24# @ 309' KB  
 Cement: 310 sx  
 TOC: Surface

Water Well	100	250
FH:	254	404
Sfc Casing	309	409
Min. shoe plug depth:		<b>409</b>

TOC @ 6252'

Nio Log Top: 6572'

**Production Casing:**  
 4.5" 11.6# N-80 @ 6938' KB  
 Cement: 697 sx  
 TD: 2/19/1985



Cut surface casing off 6'-8' below surface.

Pump approx 35 sx shoe plug @ 409'  
 Will bring cement to surface.

Pump 65 balance plug at 2910'

Perforate 4 1/2" casing @ 4000'  
 Pump 210 sx through and 35 sx on top  
 Set CICR @ 4450'  
 Perforate 4 1/2" casing @ 4550'

Set CIBP @ 6529' w/ 2 sx cement on top

Niobrara Perforations: 6579-6770' KB

Codell Perforations: 6862-6874' KB

TD: 6970' KB