

NOBLE COGCC SHL

- Producing
- Shut In
- Drilling
- Abandoned Location
- Drilled/Abandoned
- Plugged/Abandoned
- Temporarily Abandoned
- Permit Location
- Injection
- Workover

Assets (Large Scale)

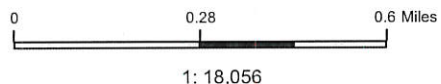
- 70 RANCH
- BALL RANCH
- CERVI RANCH
- EAST PONY
- GROVER
- GUTTERSEN RANCH
- LILLI
- WELLS RANCH
- WEST PONY

Integrated Development Plan

- Well Pad
- Drilled/Final Well**
 - Drilled Well
 - Completed Well
- Planned Well**
 - Planned Burkett Well
 - Planned Marcellus Well
 - Planned Utica Well
- Proposed Well**
 - Proposed Burkett Well

Notes

4N-66W-6: SWNE, W2 of Lot 2 of the NE, Parcel in NWNE, NENW of Section 7 and the W2SE and SW of Section 6



Source: iNAV
Map Date: 10/31/2016

Disclaimer: All data is licensed for Noble Energy, Inc. use only. Noble Energy, Inc. makes every effort to ensure this map is free of errors, but does not warrant the map or its features are either spatially or temporally accurate or fit for a particular use. Noble Energy, Inc. provides this map without any warranty of any kind whatsoever, either express or implied.