

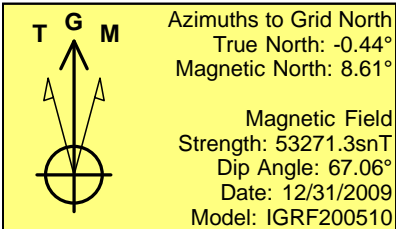
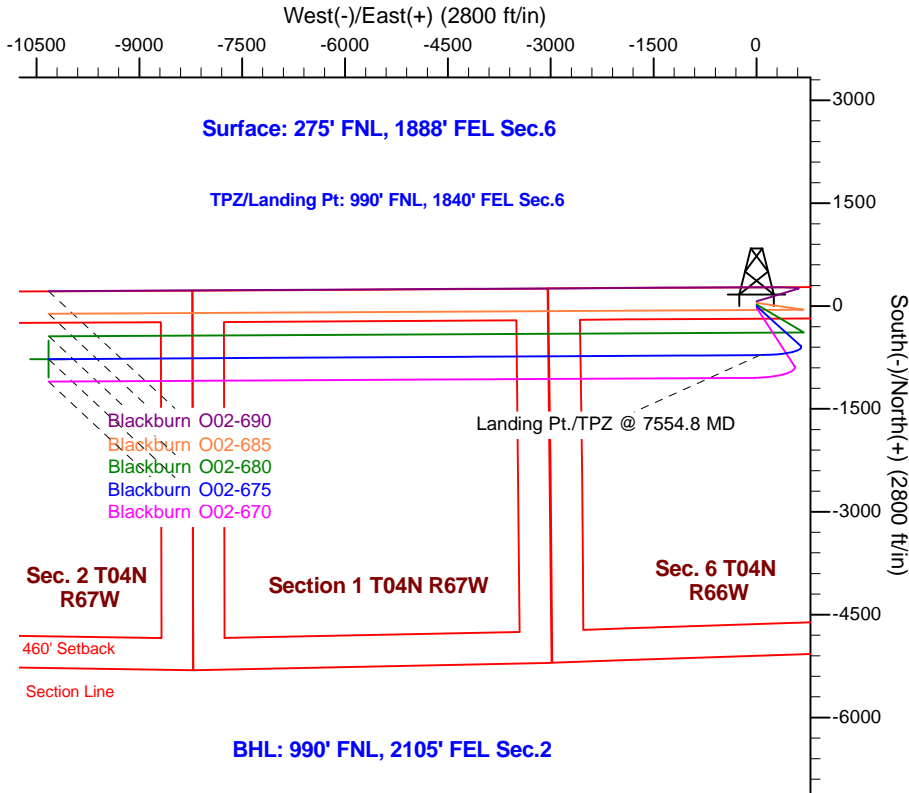
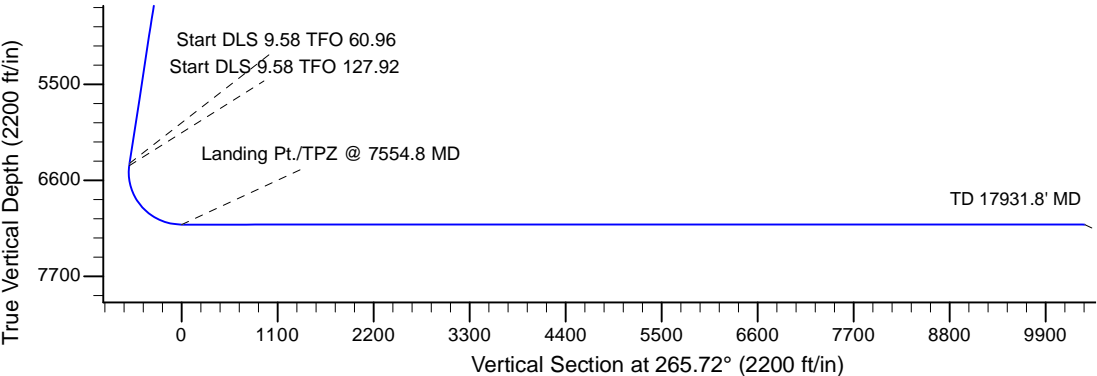
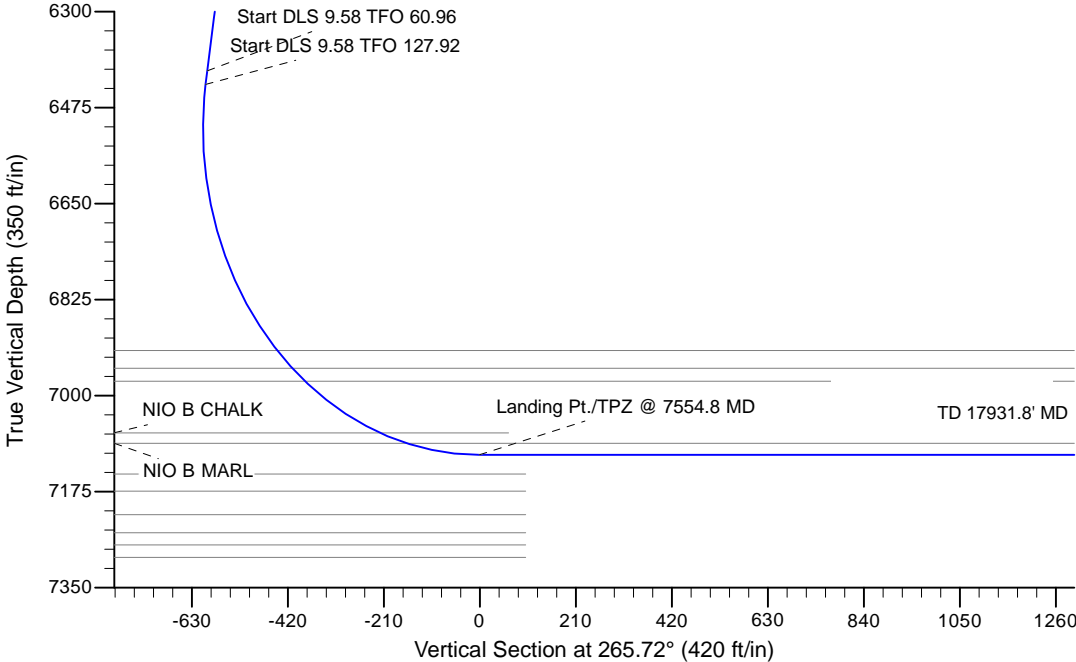
Project: Wattenberg Field
Site: K (Section 6-T04N-R66W) Weld County, CO
Well: Blackburn O02-675
Wellbore: Original Drilling
Design: APD - Rev 0

Northern Region Drilling - Working

Geodetic System: US State Plane 1983
Datum: North American Datum 1983
Ellipsoid: GRS 1980
Zone: Colorado Northern Zone
System Datum: Mean Sea Level

SECTION DETAILS

Sec	MD	Inc	Azi	TVD	+N/-S	+E/-W	Dleg	TFace	VSec	Target
1	0.0	0.00	0.00	0.0	0.0	0.0	0.00	0.00	0.0	
2	2200.0	0.00	0.00	2200.0	0.0	0.0	0.00	0.00	0.0	
3	2825.0	12.50	132.00	2820.1	-45.4	50.5	2.00	132.00	-46.9	
4	6500.1	12.50	132.00	6408.0	-577.7	641.6	0.00	0.00	-596.7	
5	6525.5	13.85	140.94	6432.8	-581.9	645.5	9.58	60.96	-600.3	
6	7554.8	90.00	269.68	7108.0	-715.0	55.0	9.58	127.92	-1.5	
7	17931.8	90.00	269.68	7108.0	-773.0	-10321.8	0.00	0.00	10350.7	Blackburn O02-675 BHL 990'FNL, 2105'FEL



WELL DETAILS: Blackburn O02-675				
Ground Level: 4778.0				
0.0	0.0	1370356.94	3189823.02	-104.818950
Plan: APD - Rev 0 (Blackburn O02-675/Original Drilling)				
Created By: Shailey Jewell Date: 13:01, August 04 2016				
OK to submit with 2A as per Noble Drilling 8/4/2016 1:03				