

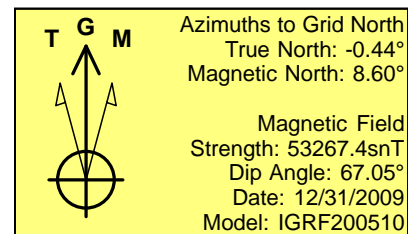
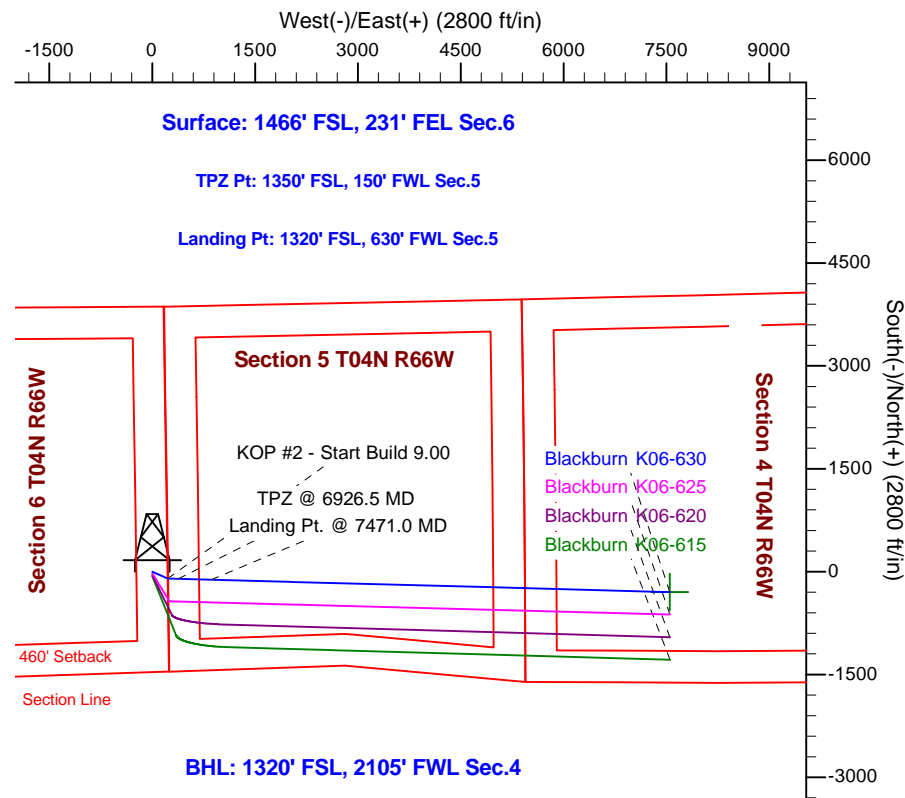
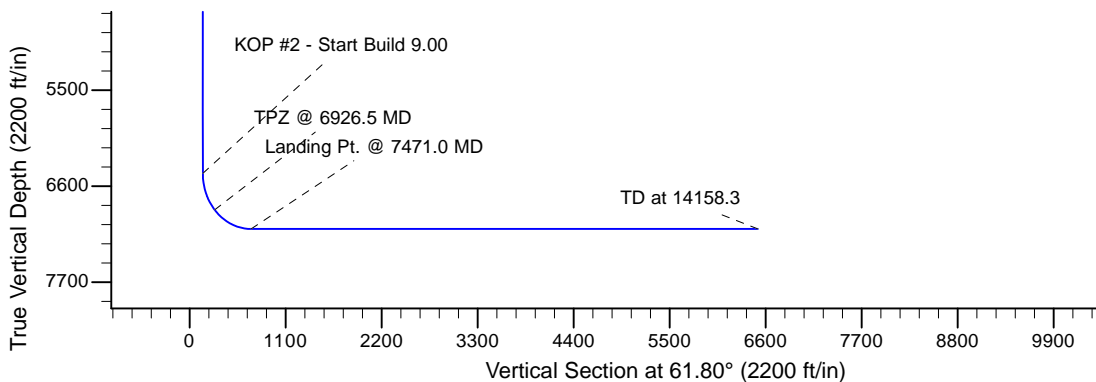
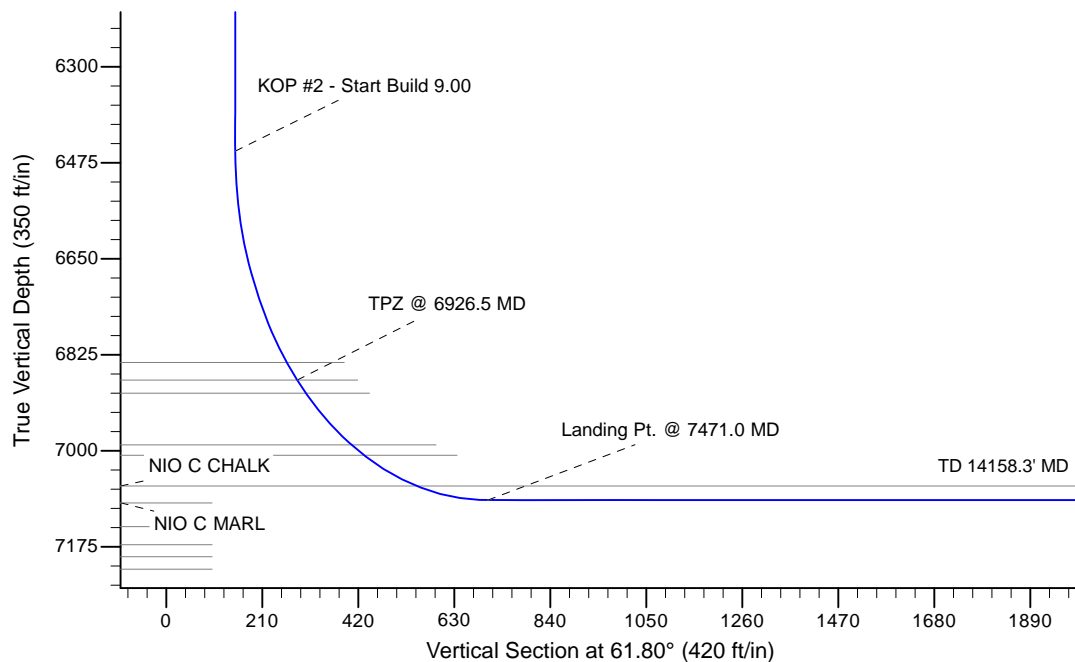
Project: Wattenberg Field  
 Site: K (Section 6-T04N-R66W) Weld County, CO  
 Well: Blackburn K06-630  
 Wellbore: Original Drilling  
 Design: APD - Rev 0

# Northern Region Drilling - Working

Geodetic System: US State Plane 1983  
 Datum: North American Datum 1983  
 Ellipsoid: GRS 1980  
 Zone: Colorado Northern Zone  
 System Datum: Mean Sea Level

## SECTION DETAILS

Sec	MD	Inc	Azi	TVD	+N/-S	+E/-W	Dleg	TFace	VSec	Target
1	0.0	0.00	0.00	0.0	0.0	0.0	0.00	0.00	0.0	
2	2500.0	0.00	0.00	2500.0	0.0	0.0	0.00	0.00	0.0	
3	2952.2	9.04	113.96	2950.3	-14.5	32.5	2.00	113.96	21.9	
4	4065.4	9.04	113.96	4049.7	-85.5	192.5	0.00	0.00	129.2	
5	4517.6	0.00	0.00	4500.0	-100.0	225.0	2.00	180.00	151.1	
6	6471.0	0.00	0.00	6453.4	-100.0	225.0	0.00	0.00	151.1	
7	7471.0	90.00	91.54	7090.0	-117.2	861.4	9.00	91.54	703.8	
8	14158.3	90.00	91.54	7090.0	-297.4	7546.3	0.00	0.00	6510.4	Blackburn K06-630 BHL 1320'FSL, 2105'FWL



## WELL DETAILS: Blackburn K06-630

Ground Level: 4705.0		Latitude		Longitude	
Northing	Easting				
0.0	0.0	1366778.08	3191531.50	40.338170	-104.812920

Plan: APD - Rev 0 (Blackburn K06-630/Original Drilling)

Created By: Shailey Jewell

Date: 15:31, August 05 2016

**OK to submit with 2A as per Noble Drilling**  
**8/5/2016 3:38**