

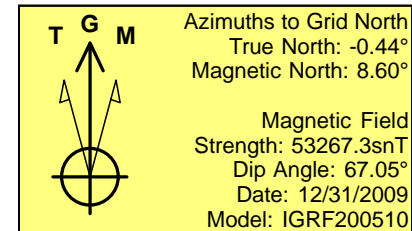
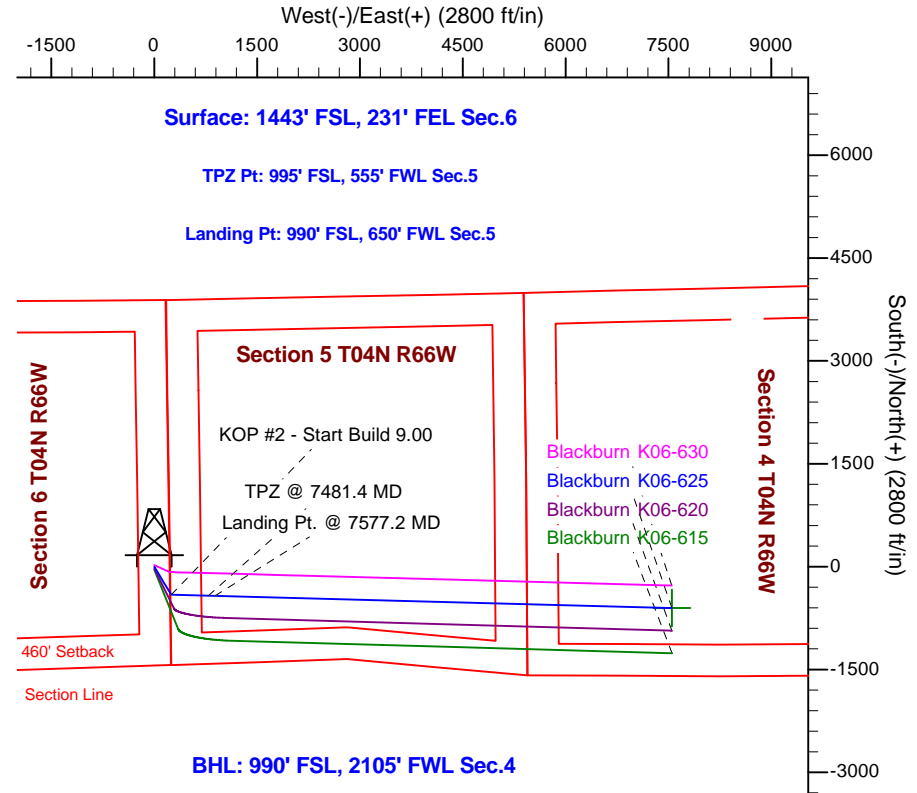
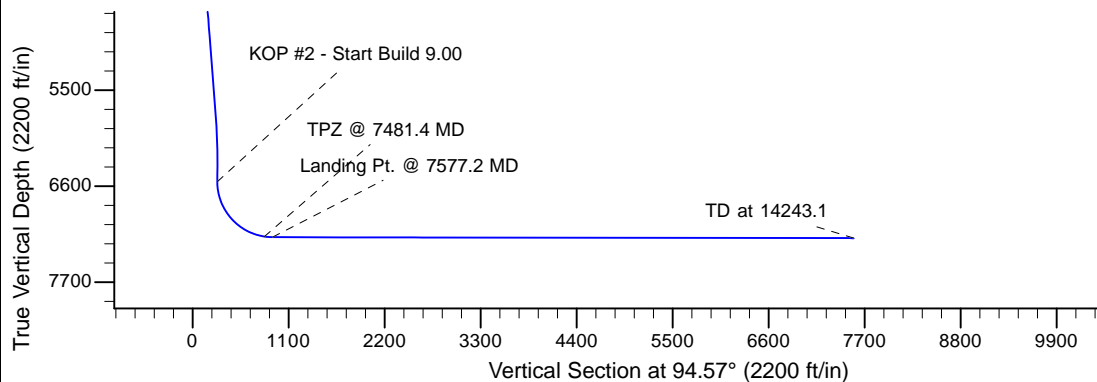
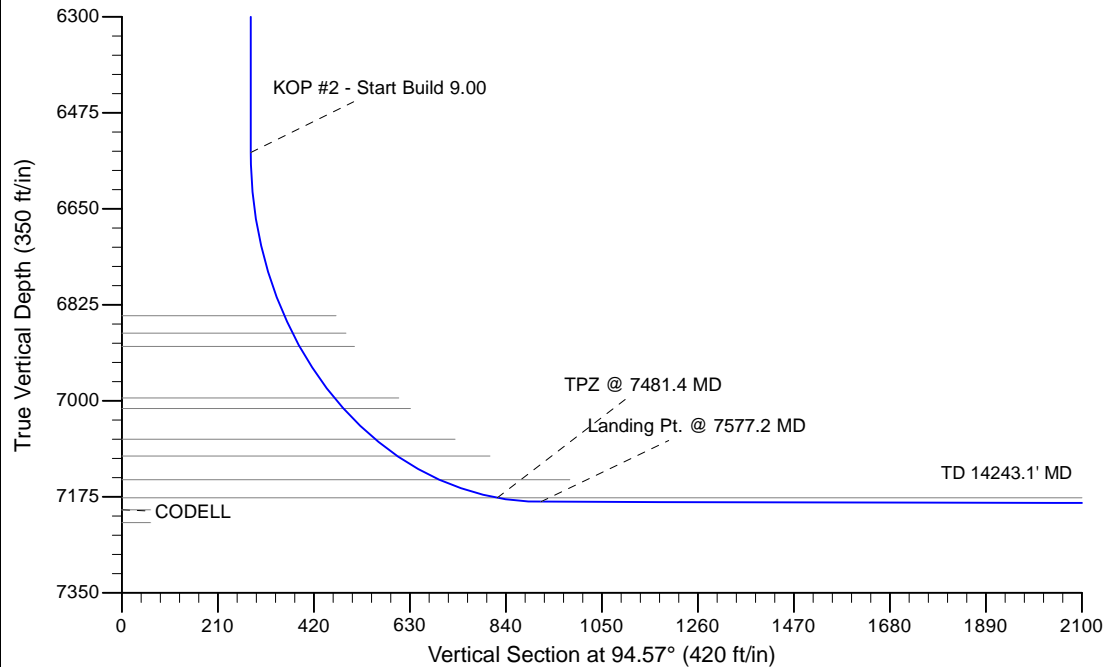
Project: Wattenberg Field  
 Site: K (Section 6-T04N-R66W) Weld County, CO  
 Well: Blackburn K06-625  
 Wellbore: Original Drilling  
 Design: APD - Rev 0

# Northern Region Drilling - Working

Geodetic System: US State Plane 1983  
 Datum: North American Datum 1983  
 Ellipsoid: GRS 1980  
 Zone: Colorado Northern Zone  
 System Datum: Mean Sea Level

## SECTION DETAILS

Sec	MD	Inc	Azi	TVD	+N/-S	+E/-W	Dleg	TFace	VSec	Target
1	0.0	0.00	0.00	0.0	0.0	0.0	0.00	0.00	0.0	
2	2200.0	0.00	0.00	2200.0	0.0	0.0	0.00	0.00	0.0	
3	2577.6	7.55	148.63	2576.5	-21.2	12.9	2.00	148.63	14.6	
4	5853.0	7.55	148.63	5823.5	-388.8	237.1	0.00	0.00	267.3	
5	6230.6	0.00	0.00	6200.0	-410.0	250.0	2.00	180.00	281.9	
6	6578.3	0.00	0.00	6547.7	-410.0	250.0	0.00	0.00	281.9	
7	7577.2	89.90	91.52	7184.4	-426.8	885.3	9.00	91.52	916.5	
8	14243.1	89.90	91.52	7196.0	-603.4	7548.8	0.00	0.00	7572.9	Blackburn K06-625 BHL 990'FSL, 2105'FWL



## WELL DETAILS: Blackburn K06-625

		Ground Level: 4705.0	
Northing	Easting	Latitude	Longitude
0.0	0.0	1366756.22	3191531.67
		40.338110	-104.812920

Plan: APD - Rev 0 (Blackburn K06-625/Original Drilling)

Created By: Shailey Jewell

Date: 15:41, August 05 2016

OK to submit with 2A as per Noble Drilling  
 8/5/2016 3:44