

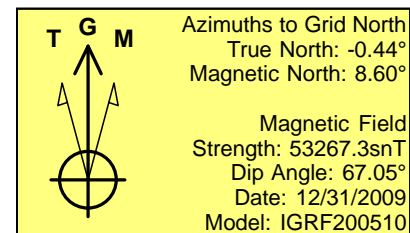
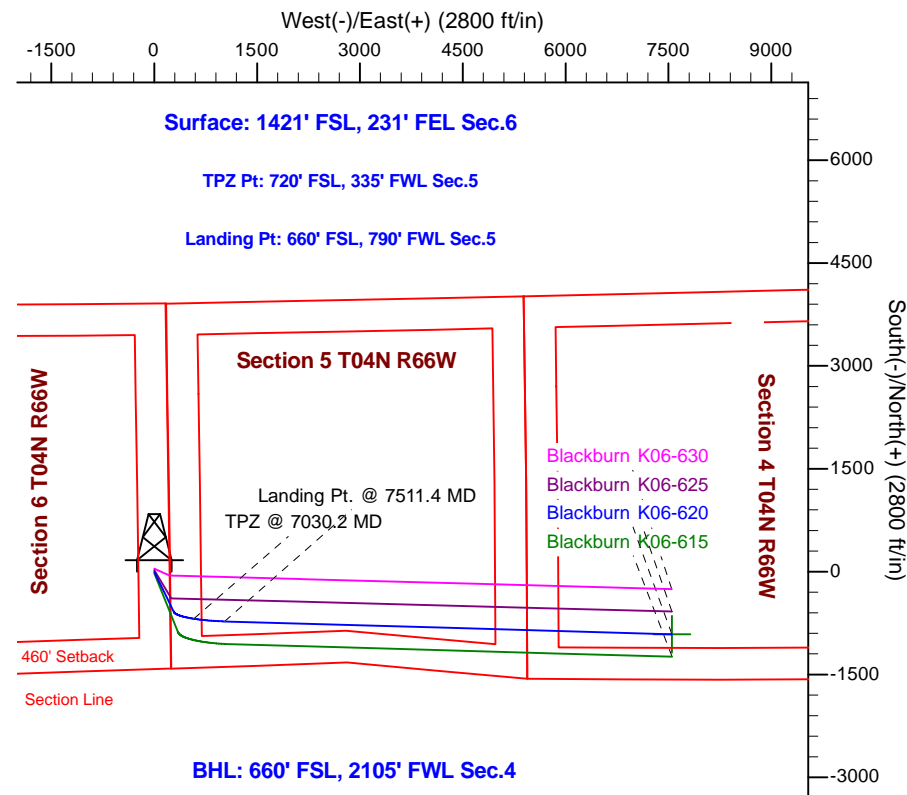
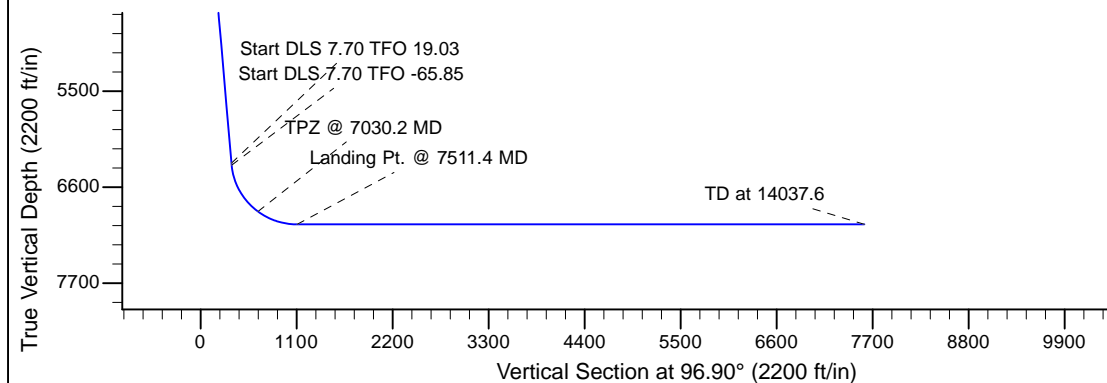
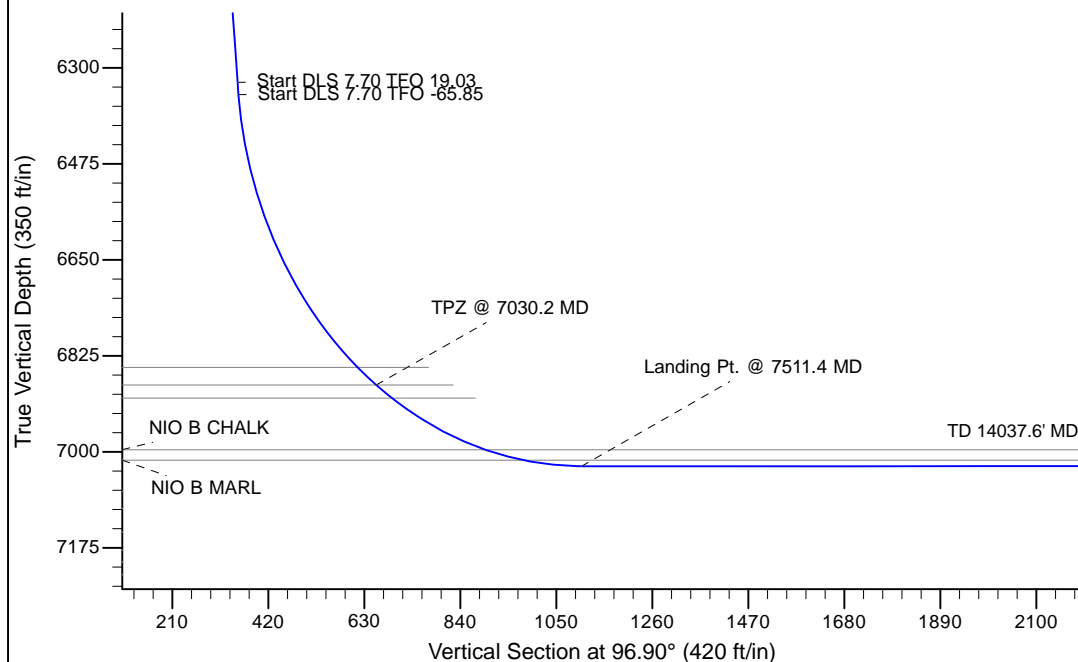
Project: Wattenberg Field
 Site: K (Section 6-T04N-R66W) Weld County, CO
 Well: Blackburn K06-620
 Wellbore: Original Drilling
 Design: APD - Rev 0

Northern Region Drilling - Working

Geodetic System: US State Plane 1983
 Datum: North American Datum 1983
 Ellipsoid: GRS 1980
 Zone: Colorado Northern Zone
 System Datum: Mean Sea Level

SECTION DETAILS

Sec	MD	Inc	Azi	TVD	+N/-S	+E/-W	Dleg	TFace	VSec	Target
1	0.0	0.00	0.00	0.0	0.0	0.0	0.00	0.00	0.0	
2	2000.0	0.00	0.00	2000.0	0.0	0.0	0.00	0.00	0.0	
3	2450.0	9.00	154.00	2448.2	-31.7	15.5	2.00	154.00	19.2	
4	6376.2	9.00	154.00	6326.0	-583.7	284.7	0.00	0.00	352.7	
5	6399.2	10.69	157.12	6348.7	-587.3	286.3	7.70	19.03	354.8	
6	7511.4	90.00	91.65	7026.0	-725.0	1025.0	7.70	-65.85	1104.6	
7	14037.6	90.00	91.65	7026.0	-913.1	7548.5	0.00	90.00	7603.5	Blackburn K06-620 BHL 660' FSL, 2105' FWL



WELL DETAILS: Blackburn K06-620

Ground Level: 4706.0		Latitude		Longitude	
North	East	Lat	Long	Lat	Long
0.0	0.0	1366734.37	3191531.84	40.338050	-104.812920

Plan: APD - Rev 0 (Blackburn K06-620/Original Drilling)

Created By: Shailey Jewell

Date: 15:46, August 05 2016

OK to submit with 2A as per Noble Drilling
 8/5/2016 3:49