

NOBLE ENERGY INC.
GUNTHER 18-01
NWNE 18-5N-64W
660 FNL & 1980 FEL
WELD COUNTY, CO
Wattenberg
CURRENT WELLBORE SCHEMATIC
with PROPOSED P&A
11/8/2016

API: 05-123-12245

GL Elev: 4621'
 KB Elev: 4631'

Spud Date: 2/6/1985

Surface Casing:

8.625" 24# @ 308' KB
 Cement: 300 sx
 TOC: Surface

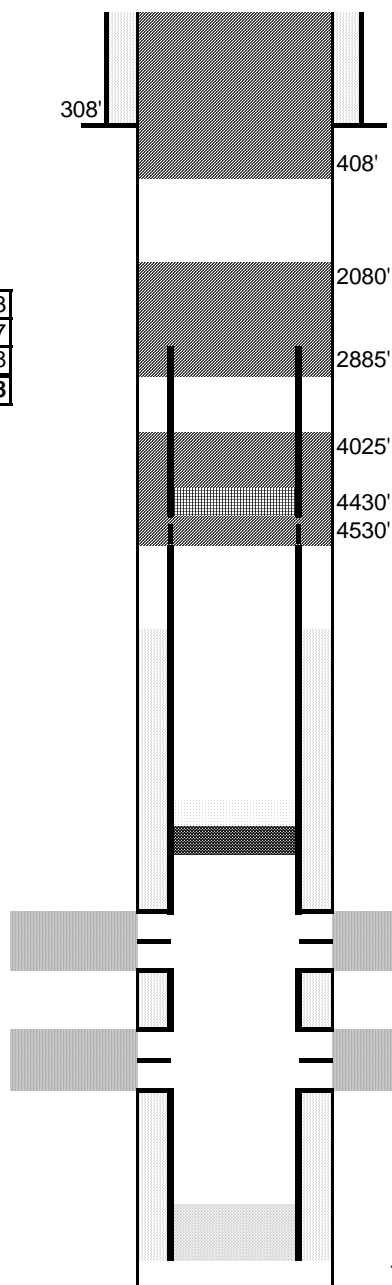
Water Well	103	253
FH:	257	407
Sfc Casing	308	408
Min. shoe plug depth:		408

TOC @ 6250'

Nio Log Top: 6572'

Production Casing:

4.5" 11.6# N-80 @ 6935' KB
 Cement: 135 sx
 TD: 2/13/1985



Cut surface casing off 6'-8' below surface.

Pump approx 145 sx shoe plug @ 408'
 Will bring cement to surface.

Pump 385 sx stub plug where csg was pulled
 Cut and pull csg @ 2885'

Pump 200 sx through and 35 sx on top
 Set CIGR @ 4430'
 Perforate 4 1/2" casing @ 4530'

Set CIBP @ 6529' w/ 2 sx cement on top

Niobrara Perforations: 6579-6780' KB

Codell Perforations: 6871-6882' KB

TD: 6970' KB