

BONANZA CREEK ENERGY INC.

WELD COUNTY, COLORADO (NAD 83)

NW NE SEC. 11 T5N R62W 6th P.M.

STATE ANTELOPE K-11-14XRLNB

ORIGINAL WELLBORE

27 August, 2016

Plan: PROPOSAL #1





Project: WELD COUNTY, COLORADO (NAD 83)
Site: NW NE SEC. 11 T5N R62W 6th P.M.
Well: STATE ANTELOPE K-11-14XRLNB
Wellbore: ORIGINAL WELLBORE
Design: PROPOSAL #1

ANNOTATIONS

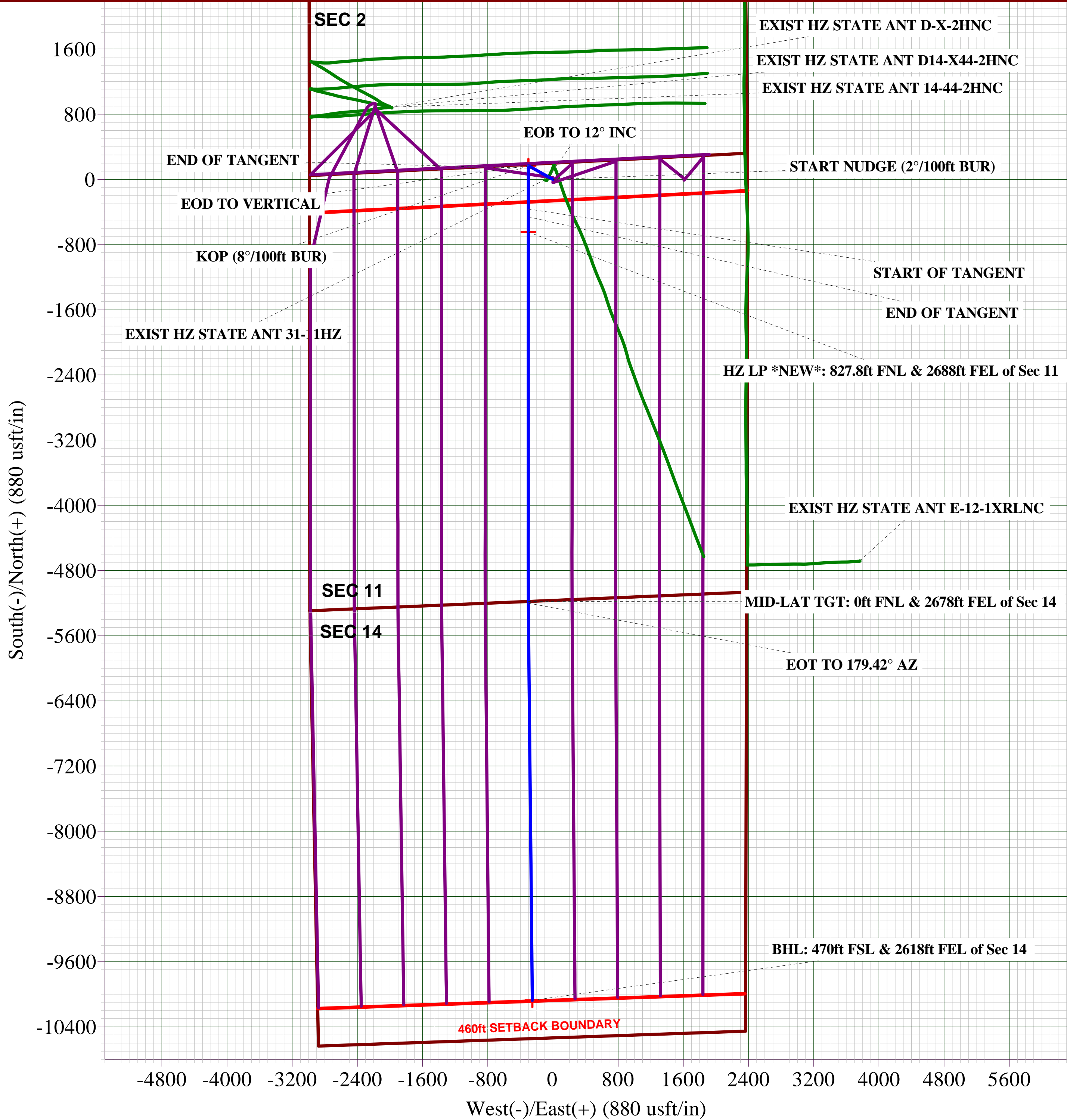
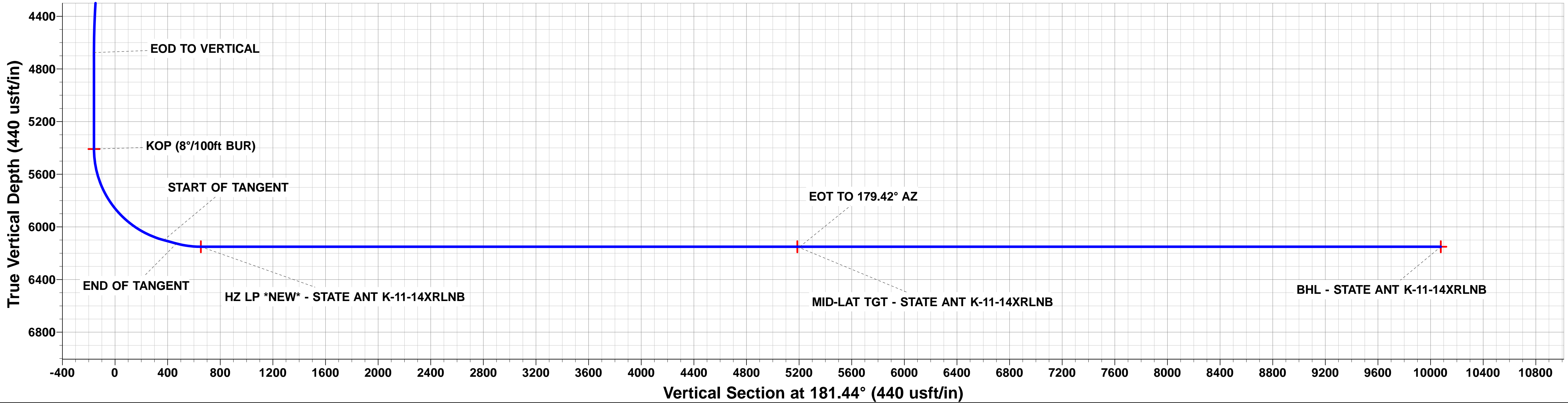
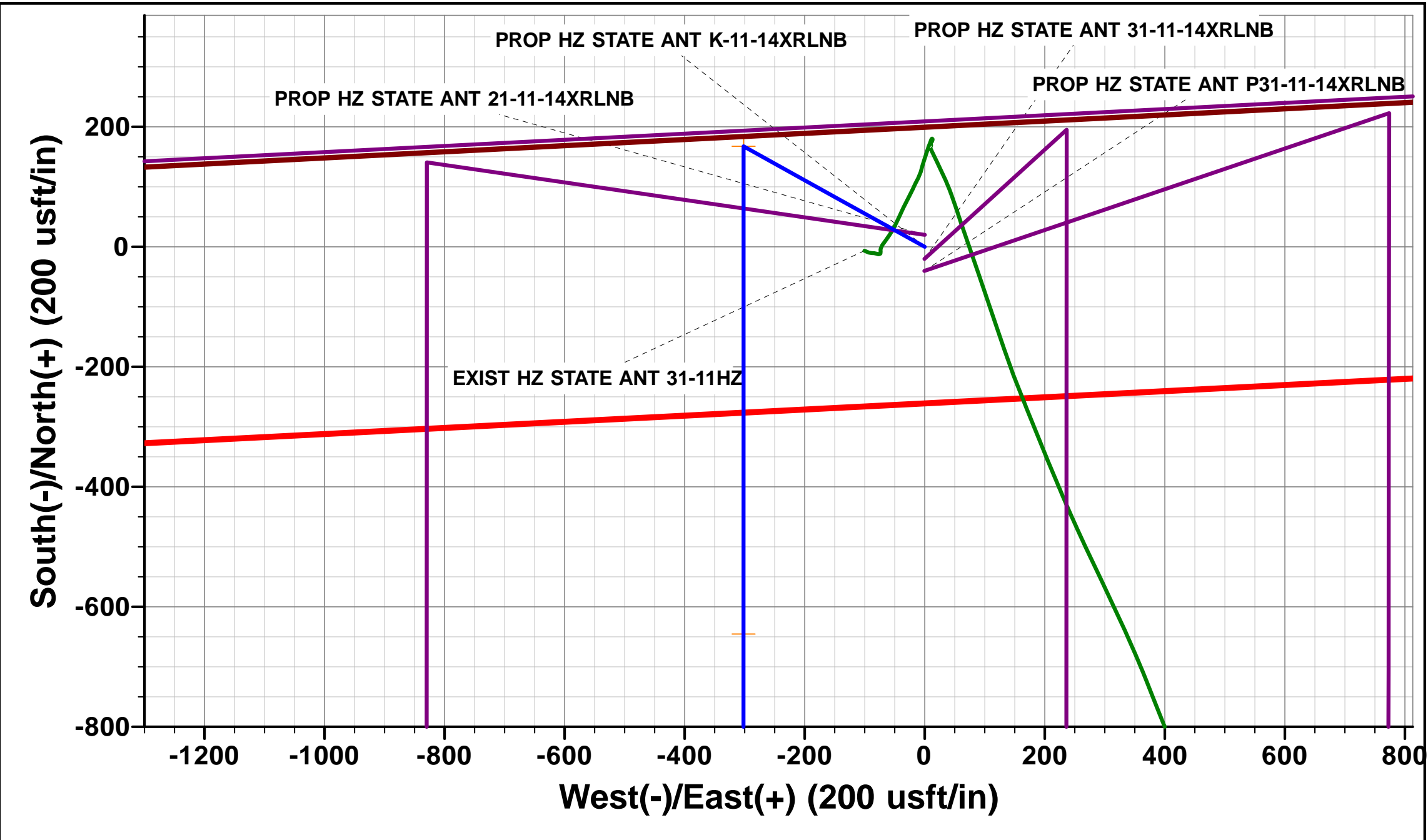
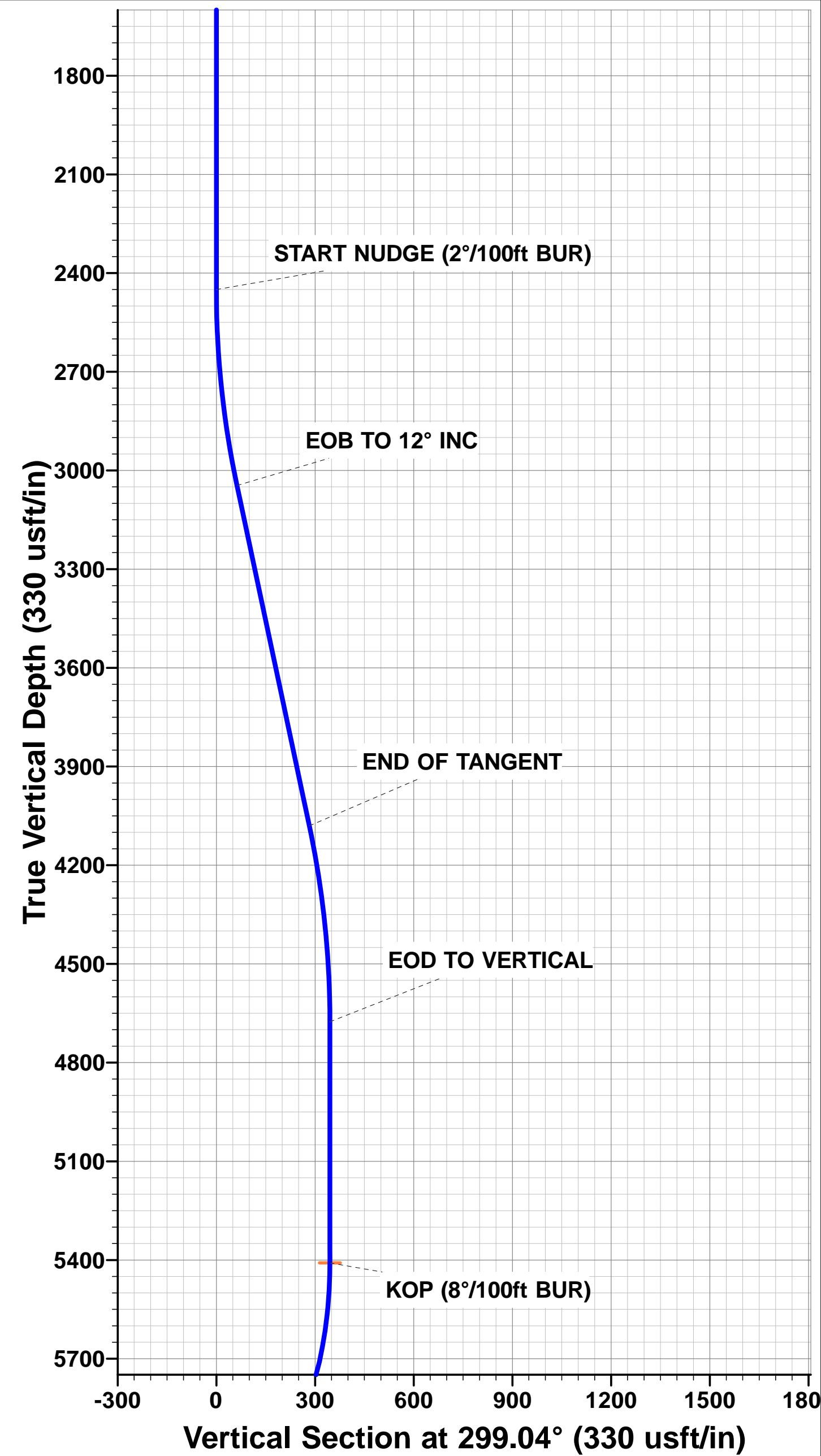
TVD	MD	Inc	Azi	+N/-S	+E/-W	Vsect	Dep	Annotation
0.0	0.0	0.00	0.00	0.0	0.0	0.0	0.0	SHL: 198ft FNL & 2387ft FEL of Sec 11
1550.0	1550.0	0.00	0.00	0.0	0.0	0.0	0.0	SURFACE CASING
2450.0	2450.0	0.00	0.00	0.0	0.0	0.0	0.0	START NUDGE (2°/100ft BUR)
3045.7	3050.0	12.00	299.04	30.4	-54.7	-29.0	62.6	EOB TO 12° INC
4080.1	4107.6	12.00	299.04	137.1	-247.0	-130.9	282.5	END OF TANGENT
4675.7	4707.6	0.00	0.00	167.5	-301.7	-159.9	345.1	EOD TO VERTICAL
5408.7	5440.6	0.00	0.00	167.5	-301.7	-159.9	345.1	KOP (8°/100ft BUR)
6100.5	6378.1	75.00	180.01	-363.4	-301.8	370.8	875.9	START OF TANGENT
6126.4	6478.1	75.00	180.01	-460.0	-301.8	467.4	972.5	END OF TANGENT
6150.8	6665.6	90.00	180.01	-645.3	-301.8	652.7	1157.9	HZ LP *NEW*: 827.8ft FNL & 2688ft FEL of Sec 11
6150.8	11200.6	90.00	180.01	-5180.3	-302.6	5186.3	5692.9	MID-LAT TGT: 0ft FNL & 2678ft FEL of Sec 14
6150.8	11220.2	90.00	179.42	-5199.9	-302.5	5205.9	5712.5	EOT TO 179.42° AZ
6150.8	16095.4	90.00	179.42	-10074.8	-253.3	10078.0	10587.7	BHL: 470ft FSL & 2618ft FEL of Sec 14

PROPOSED LOCAL COORDINATES:

SHL: 198ft FNL & 2387ft FEL Sec 11
HZ LP: 827.8ft FNL & 2688ft FEL Sec 11
MID-LAT: 0ft FNL & 2678ft FEL Sec 14
BHL: 470ft FSL & 2618ft FEL Sec 14

WELLBORE TARGET DETAILS (LAT/LONG)

Name	TVD	+N/-S	+E/-W	Latitude	Longitude
KOP - STATE ANT K-11-14XRLNB	5408.7	167.5	-301.7	40.422293	-104.290362
BHL - STATE ANT K-11-14XRLNB	6150.8	-10074.8	-253.3	40.394179	-104.290188
HZ LP *NEW* - STATE ANT K-11-14XRLNB	6150.8	-645.3	-301.8	40.420062	-104.290363
MID-LAT TGT - STATE ANT K-11-14XRLNB	6150.8	-5180.4	-302.6	40.407614	-104.290365



Database:	EDM 5000.1 Single User Db	Local Co-ordinate Reference:	Well STATE ANTELOPE K-11-14XRLNB
Company:	BONANZA CREEK ENERGY INC.	TVD Reference:	KB-EST @ 4620.8usft (Original Well Elev)
Project:	WELD COUNTY, COLORADO (NAD 83)	MD Reference:	KB-EST @ 4620.8usft (Original Well Elev)
Site:	NW NE SEC. 11 T5N R62W 6th P.M.	North Reference:	True
Well:	STATE ANTELOPE K-11-14XRLNB	Survey Calculation Method:	Minimum Curvature
Wellbore:	ORIGINAL WELLBORE		
Design:	PROPOSAL #1		

Project	WELD COUNTY, COLORADO (NAD 83)		
Map System:	US State Plane 1983	System Datum:	Mean Sea Level
Geo Datum:	North American Datum 1983		
Map Zone:	Colorado Northern Zone		Using geodetic scale factor

Site	NW NE SEC. 11 T5N R62W 6th P.M.				
Site Position:		Northing:	1,398,835.52 usft	Latitude:	40.421889
From:	Lat/Long	Easting:	3,337,079.30 usft	Longitude:	-104.289278
Position Uncertainty:	0.0 usft	Slot Radius:	1.10000 ft	Grid Convergence:	0.78 °

Well	STATE ANTELOPE K-11-14XRLNB					
Well Position	+N/-S	-20.0 usft	Northing:	1,398,815.51 usft	Latitude:	40.421834
	+E/-W	-0.3 usft	Easting:	3,337,079.29 usft	Longitude:	-104.289279
Position Uncertainty		0.0 usft	Wellhead Elevation:	usft	Ground Level:	4,603.8 usft

Wellbore	ORIGINAL WELLBORE				
Magnetics	Model Name	Sample Date	Declination (°)	Dip Angle (°)	Field Strength (nT)
	IGRF2015	27/08/2016	8.04	66.97	52,547

Design	PROPOSAL #1			
Audit Notes:				
Version:	Phase:	PROTOTYPE	Tie On Depth:	0.0
Vertical Section:	Depth From (TVD) (usft)	+N/-S (usft)	+E/-W (usft)	Direction (°)
	0.0	0.0	0.0	181.44

Plan Sections											
MD (usft)	Inc (°)	Azi (°)	Vertical Depth	SS (usft)	+N/-S (usft)	+E/-W (usft)	Dogleg Rate (°/100usf)	Build Rate (°/100usf)	Turn Rate (°/100usf)	TFO (°)	Target
0.0	0.00	0.00	0.0	-4,620.8	0.0	0.0	0.00	0.00	0.00	0.00	
2,450.0	0.00	0.00	2,450.0	-2,170.8	0.0	0.0	0.00	0.00	0.00	0.00	
3,050.0	12.00	299.04	3,045.6	-1,575.2	30.4	-54.7	2.00	2.00	0.00	299.04	
4,107.6	12.00	299.04	4,080.1	-540.7	137.1	-247.0	0.00	0.00	0.00	0.00	
4,707.6	0.00	0.00	4,675.7	54.9	167.5	-301.7	2.00	-2.00	0.00	180.00	
5,440.6	0.00	0.00	5,408.7	787.9	167.5	-301.7	0.00	0.00	0.00	0.00	KOP - STATE ANT
6,378.1	75.00	180.01	6,100.5	1,479.7	-363.3	-301.8	8.00	8.00	0.00	180.01	
6,478.1	75.00	180.01	6,126.4	1,505.6	-459.9	-301.8	0.00	0.00	0.00	0.00	
6,665.6	90.00	180.01	6,150.8	1,530.0	-645.3	-301.8	8.00	8.00	0.00	0.00	
11,200.6	90.00	180.01	6,150.8	1,530.0	-5,180.4	-302.6	0.00	0.00	0.00	-104.27	MID-LAT TGT - ST/
11,220.2	90.00	179.42	6,150.8	1,530.0	-5,199.9	-302.5	3.00	0.00	-3.00	-89.95	
16,095.4	90.00	179.42	6,150.8	1,530.0	-10,074.8	-253.3	0.00	0.00	0.00	0.00	BHL - STATE ANT

Database:	EDM 5000.1 Single User Db	Local Co-ordinate Reference:	Well STATE ANTELOPE K-11-14XRLNB
Company:	BONANZA CREEK ENERGY INC.	TVD Reference:	KB-EST @ 4620.8usft (Original Well Elev)
Project:	WELD COUNTY, COLORADO (NAD 83)	MD Reference:	KB-EST @ 4620.8usft (Original Well Elev)
Site:	NW NE SEC. 11 T5N R62W 6th P.M.	North Reference:	True
Well:	STATE ANTELOPE K-11-14XRLNB	Survey Calculation Method:	Minimum Curvature
Wellbore:	ORIGINAL WELLBORE		
Design:	PROPOSAL #1		

Planned Survey

MD (usft)	Inc (°)	Azi (°)	TVD (usft)	SS (usft)	+N/-S (usft)	+E/-W (usft)	Vertical Section (usft)	Dogleg Rate (°/100usft)	Build Rate (°/100usft)	Turn Rate (°/100usft)
SHL: 198ft FNL & 2387ft FEL of Sec 11										
0.0	0.00	0.00	0.0	4,620.80	0.0	0.0	0.0	0.00	0.00	0.00
100.0	0.00	0.00	100.0	4,520.80	0.0	0.0	0.0	0.00	0.00	0.00
200.0	0.00	0.00	200.0	4,420.80	0.0	0.0	0.0	0.00	0.00	0.00
300.0	0.00	0.00	300.0	4,320.80	0.0	0.0	0.0	0.00	0.00	0.00
400.0	0.00	0.00	400.0	4,220.80	0.0	0.0	0.0	0.00	0.00	0.00
500.0	0.00	0.00	500.0	4,120.80	0.0	0.0	0.0	0.00	0.00	0.00
600.0	0.00	0.00	600.0	4,020.80	0.0	0.0	0.0	0.00	0.00	0.00
700.0	0.00	0.00	700.0	3,920.80	0.0	0.0	0.0	0.00	0.00	0.00
800.0	0.00	0.00	800.0	3,820.80	0.0	0.0	0.0	0.00	0.00	0.00
900.0	0.00	0.00	900.0	3,720.80	0.0	0.0	0.0	0.00	0.00	0.00
1,000.0	0.00	0.00	1,000.0	3,620.80	0.0	0.0	0.0	0.00	0.00	0.00
1,100.0	0.00	0.00	1,100.0	3,520.80	0.0	0.0	0.0	0.00	0.00	0.00
1,200.0	0.00	0.00	1,200.0	3,420.80	0.0	0.0	0.0	0.00	0.00	0.00
1,300.0	0.00	0.00	1,300.0	3,320.80	0.0	0.0	0.0	0.00	0.00	0.00
1,400.0	0.00	0.00	1,400.0	3,220.80	0.0	0.0	0.0	0.00	0.00	0.00
1,500.0	0.00	0.00	1,500.0	3,120.80	0.0	0.0	0.0	0.00	0.00	0.00
SURFACE CASING										
1,550.0	0.00	0.00	1,550.0	3,070.80	0.0	0.0	0.0	0.00	0.00	0.00
1,600.0	0.00	0.00	1,600.0	3,020.80	0.0	0.0	0.0	0.00	0.00	0.00
1,700.0	0.00	0.00	1,700.0	2,920.80	0.0	0.0	0.0	0.00	0.00	0.00
1,800.0	0.00	0.00	1,800.0	2,820.80	0.0	0.0	0.0	0.00	0.00	0.00
1,900.0	0.00	0.00	1,900.0	2,720.80	0.0	0.0	0.0	0.00	0.00	0.00
2,000.0	0.00	0.00	2,000.0	2,620.80	0.0	0.0	0.0	0.00	0.00	0.00
2,100.0	0.00	0.00	2,100.0	2,520.80	0.0	0.0	0.0	0.00	0.00	0.00
2,200.0	0.00	0.00	2,200.0	2,420.80	0.0	0.0	0.0	0.00	0.00	0.00
2,300.0	0.00	0.00	2,300.0	2,320.80	0.0	0.0	0.0	0.00	0.00	0.00
2,400.0	0.00	0.00	2,400.0	2,220.80	0.0	0.0	0.0	0.00	0.00	0.00
START NUDGE (2°/100ft BUR)										
2,450.0	0.00	0.00	2,450.0	2,170.80	0.0	0.0	0.0	0.00	0.00	0.00
2,500.0	1.00	299.04	2,500.0	2,120.80	0.2	-0.4	-0.2	2.00	2.00	0.00
2,600.0	3.00	299.04	2,599.9	2,020.87	1.9	-3.4	-1.8	2.00	2.00	0.00
2,700.0	5.00	299.04	2,699.7	1,921.12	5.3	-9.5	-5.1	2.00	2.00	0.00
2,800.0	7.00	299.04	2,799.1	1,821.67	10.4	-18.7	-9.9	2.00	2.00	0.00
2,900.0	9.00	299.04	2,898.2	1,722.65	17.1	-30.8	-16.3	2.00	2.00	0.00
3,000.0	11.00	299.04	2,996.6	1,624.17	25.5	-46.0	-24.4	2.00	2.00	0.00
3,050.0	12.00	299.04	3,045.6	1,575.19	30.4	-54.7	-29.0	2.00	2.00	0.00
EOB TO 12° INC										
3,050.0	12.00	299.04	3,045.7	1,575.14	30.4	-54.7	-29.0	0.00	0.00	0.00
3,100.0	12.00	299.04	3,094.5	1,526.27	35.4	-63.8	-33.8	0.00	0.00	0.00
3,200.0	12.00	299.04	3,192.3	1,428.45	45.5	-82.0	-43.4	0.00	0.00	0.00
3,300.0	12.00	299.04	3,290.2	1,330.64	55.6	-100.2	-53.1	0.00	0.00	0.00
3,400.0	12.00	299.04	3,388.0	1,232.82	65.7	-118.4	-62.7	0.00	0.00	0.00
3,500.0	12.00	299.04	3,485.8	1,135.01	75.8	-136.5	-72.3	0.00	0.00	0.00
3,600.0	12.00	299.04	3,583.6	1,037.20	85.9	-154.7	-82.0	0.00	0.00	0.00
3,700.0	12.00	299.04	3,681.4	939.38	96.0	-172.9	-91.6	0.00	0.00	0.00
3,800.0	12.00	299.04	3,779.2	841.57	106.1	-191.1	-101.2	0.00	0.00	0.00
3,900.0	12.00	299.04	3,877.0	743.75	116.2	-209.2	-110.9	0.00	0.00	0.00
4,000.0	12.00	299.04	3,974.9	645.94	126.3	-227.4	-120.5	0.00	0.00	0.00
4,100.0	12.00	299.04	4,072.7	548.12	136.3	-245.6	-130.1	0.00	0.00	0.00
END OF TANGENT										
4,107.6	12.00	299.04	4,080.1	540.69	137.1	-247.0	-130.9	0.00	0.00	0.00
4,200.0	10.15	299.04	4,170.8	450.01	145.7	-262.5	-139.1	2.00	-2.00	0.00
4,300.0	8.15	299.04	4,269.5	351.29	153.5	-276.4	-146.5	2.00	-2.00	0.00

Database:	EDM 5000.1 Single User Db	Local Co-ordinate Reference:	Well STATE ANTELOPE K-11-14XRLNB
Company:	BONANZA CREEK ENERGY INC.	TVD Reference:	KB-EST @ 4620.8usft (Original Well Elev)
Project:	WELD COUNTY, COLORADO (NAD 83)	MD Reference:	KB-EST @ 4620.8usft (Original Well Elev)
Site:	NW NE SEC. 11 T5N R62W 6th P.M.	North Reference:	True
Well:	STATE ANTELOPE K-11-14XRLNB	Survey Calculation Method:	Minimum Curvature
Wellbore:	ORIGINAL WELLBORE		
Design:	PROPOSAL #1		

Planned Survey

MD (usft)	Inc (°)	Azi (°)	TVD (usft)	SS (usft)	+N/-S (usft)	+E/-W (usft)	Vertical Section (usft)	Dogleg Rate (°/100usft)	Build Rate (°/100usft)	Turn Rate (°/100usft)
4,400.0	6.15	299.04	4,368.7	252.07	159.5	-287.3	-152.2	2.00	-2.00	0.00
4,500.0	4.15	299.04	4,468.3	152.48	163.9	-295.1	-156.4	2.00	-2.00	0.00
4,600.0	2.15	299.04	4,568.2	52.64	166.5	-299.9	-158.9	2.00	-2.00	0.00
4,700.0	0.15	299.04	4,668.1	-47.34	167.5	-301.7	-159.9	2.00	-2.00	0.00
EOD TO VERTICAL										
4,707.6	0.00	0.00	4,675.7	-54.94	167.5	-301.7	-159.9	1.99	-1.99	0.00
4,800.0	0.00	0.00	4,768.1	-147.34	167.5	-301.7	-159.9	0.00	0.00	0.00
4,900.0	0.00	0.00	4,868.1	-247.34	167.5	-301.7	-159.9	0.00	0.00	0.00
5,000.0	0.00	0.00	4,968.1	-347.34	167.5	-301.7	-159.9	0.00	0.00	0.00
5,100.0	0.00	0.00	5,068.1	-447.34	167.5	-301.7	-159.9	0.00	0.00	0.00
5,200.0	0.00	0.00	5,168.1	-547.34	167.5	-301.7	-159.9	0.00	0.00	0.00
5,300.0	0.00	0.00	5,268.1	-647.34	167.5	-301.7	-159.9	0.00	0.00	0.00
5,400.0	0.00	0.00	5,368.1	-747.34	167.5	-301.7	-159.9	0.00	0.00	0.00
KOP (8°/100ft BUR)										
5,440.6	0.00	0.00	5,408.7	-787.94	167.5	-301.7	-159.9	0.00	0.00	0.00
5,500.0	4.75	180.01	5,468.1	-847.27	165.0	-301.7	-157.4	8.01	8.01	0.00
5,600.0	12.75	180.01	5,566.8	-946.02	149.8	-301.7	-142.2	8.00	8.00	0.00
5,700.0	20.75	180.01	5,662.5	-1,041.70	121.0	-301.7	-113.4	8.00	8.00	0.00
5,800.0	28.75	180.01	5,753.2	-1,132.44	79.2	-301.7	-71.6	8.00	8.00	0.00
5,900.0	36.75	180.01	5,837.3	-1,216.47	25.1	-301.7	-17.5	8.00	8.00	0.00
6,000.0	44.75	180.01	5,913.0	-1,292.16	-40.1	-301.7	47.7	8.00	8.00	0.00
6,100.0	52.75	180.01	5,978.8	-1,358.03	-115.2	-301.7	122.8	8.00	8.00	0.00
6,200.0	60.75	180.01	6,033.6	-1,412.81	-198.8	-301.8	206.3	8.00	8.00	0.00
6,300.0	68.75	180.01	6,076.2	-1,455.42	-289.2	-301.8	296.7	8.00	8.00	0.00
START OF TANGENT										
6,378.1	75.00	180.01	6,100.5	-1,479.70	-363.4	-301.8	370.8	8.00	8.00	0.00
6,400.0	75.00	180.01	6,106.2	-1,485.37	-384.5	-301.8	392.0	0.00	0.00	0.00
END OF TANGENT										
6,478.1	75.00	180.01	6,126.4	-1,505.58	-460.0	-301.8	467.4	0.00	0.00	0.00
6,500.0	76.75	180.01	6,131.7	-1,510.93	-481.2	-301.8	488.6	8.01	8.01	0.00
6,600.0	84.75	180.01	6,147.8	-1,526.98	-579.8	-301.8	587.2	8.00	8.00	0.00
HZ LP *NEW*: 827.8ft FNL & 2688ft FEL of Sec 11										
6,665.6	90.00	180.01	6,150.8	-1,529.98	-645.3	-301.8	652.7	8.00	8.00	0.00
6,700.0	90.00	180.01	6,150.8	-1,529.98	-679.7	-301.8	687.1	0.00	0.00	0.00
6,800.0	90.00	180.01	6,150.8	-1,529.98	-779.7	-301.9	787.1	0.00	0.00	0.00
6,900.0	90.00	180.01	6,150.8	-1,529.98	-879.7	-301.9	887.0	0.00	0.00	0.00
7,000.0	90.00	180.01	6,150.8	-1,529.98	-979.7	-301.9	987.0	0.00	0.00	0.00
7,100.0	90.00	180.01	6,150.8	-1,529.98	-1,079.7	-301.9	1,087.0	0.00	0.00	0.00
7,200.0	90.00	180.01	6,150.8	-1,529.98	-1,179.7	-301.9	1,186.9	0.00	0.00	0.00
7,300.0	90.00	180.01	6,150.8	-1,529.98	-1,279.7	-302.0	1,286.9	0.00	0.00	0.00
7,400.0	90.00	180.01	6,150.8	-1,529.98	-1,379.7	-302.0	1,386.9	0.00	0.00	0.00
7,500.0	90.00	180.01	6,150.8	-1,529.98	-1,479.7	-302.0	1,486.8	0.00	0.00	0.00
7,600.0	90.00	180.01	6,150.8	-1,529.98	-1,579.7	-302.0	1,586.8	0.00	0.00	0.00
7,700.0	90.00	180.01	6,150.8	-1,529.98	-1,679.7	-302.0	1,686.8	0.00	0.00	0.00
7,800.0	90.00	180.01	6,150.8	-1,529.98	-1,779.7	-302.0	1,786.8	0.00	0.00	0.00
7,900.0	90.00	180.01	6,150.8	-1,529.98	-1,879.7	-302.1	1,886.7	0.00	0.00	0.00
8,000.0	90.00	180.01	6,150.8	-1,529.98	-1,979.7	-302.1	1,986.7	0.00	0.00	0.00
8,100.0	90.00	180.01	6,150.8	-1,529.98	-2,079.7	-302.1	2,086.7	0.00	0.00	0.00
8,200.0	90.00	180.01	6,150.8	-1,529.98	-2,179.7	-302.1	2,186.6	0.00	0.00	0.00
8,300.0	90.00	180.01	6,150.8	-1,529.98	-2,279.7	-302.1	2,286.6	0.00	0.00	0.00
8,400.0	90.00	180.01	6,150.8	-1,529.98	-2,379.7	-302.1	2,386.6	0.00	0.00	0.00
8,500.0	90.00	180.01	6,150.8	-1,529.98	-2,479.7	-302.1	2,486.5	0.00	0.00	0.00
8,600.0	90.00	180.01	6,150.8	-1,529.98	-2,579.7	-302.2	2,586.5	0.00	0.00	0.00

Database:	EDM 5000.1 Single User Db	Local Co-ordinate Reference:	Well STATE ANTELOPE K-11-14XRLNB
Company:	BONANZA CREEK ENERGY INC.	TVD Reference:	KB-EST @ 4620.8usft (Original Well Elev)
Project:	WELD COUNTY, COLORADO (NAD 83)	MD Reference:	KB-EST @ 4620.8usft (Original Well Elev)
Site:	NW NE SEC. 11 T5N R62W 6th P.M.	North Reference:	True
Well:	STATE ANTELOPE K-11-14XRLNB	Survey Calculation Method:	Minimum Curvature
Wellbore:	ORIGINAL WELLBORE		
Design:	PROPOSAL #1		

Planned Survey										
MD (usft)	Inc (°)	Azi (°)	TVD (usft)	SS (usft)	+N/-S (usft)	+E/-W (usft)	Vertical Section (usft)	Dogleg Rate (°/100usft)	Build Rate (°/100usft)	Turn Rate (°/100usft)
8,700.0	90.00	180.01	6,150.8	-1,529.98	-2,679.7	-302.2	2,686.5	0.00	0.00	0.00
8,800.0	90.00	180.01	6,150.8	-1,529.98	-2,779.7	-302.2	2,786.4	0.00	0.00	0.00
8,900.0	90.00	180.01	6,150.8	-1,529.98	-2,879.7	-302.2	2,886.4	0.00	0.00	0.00
9,000.0	90.00	180.01	6,150.8	-1,529.98	-2,979.7	-302.2	2,986.4	0.00	0.00	0.00
9,100.0	90.00	180.01	6,150.8	-1,529.99	-3,079.7	-302.2	3,086.4	0.00	0.00	0.00
9,200.0	90.00	180.01	6,150.8	-1,529.99	-3,179.7	-302.3	3,186.3	0.00	0.00	0.00
9,300.0	90.00	180.01	6,150.8	-1,529.99	-3,279.7	-302.3	3,286.3	0.00	0.00	0.00
9,400.0	90.00	180.01	6,150.8	-1,529.99	-3,379.7	-302.3	3,386.3	0.00	0.00	0.00
9,500.0	90.00	180.01	6,150.8	-1,529.99	-3,479.7	-302.3	3,486.2	0.00	0.00	0.00
9,600.0	90.00	180.01	6,150.8	-1,529.99	-3,579.7	-302.3	3,586.2	0.00	0.00	0.00
9,700.0	90.00	180.01	6,150.8	-1,529.99	-3,679.7	-302.3	3,686.2	0.00	0.00	0.00
9,800.0	90.00	180.01	6,150.8	-1,529.99	-3,779.7	-302.3	3,786.1	0.00	0.00	0.00
9,900.0	90.00	180.01	6,150.8	-1,529.99	-3,879.7	-302.4	3,886.1	0.00	0.00	0.00
10,000.0	90.00	180.01	6,150.8	-1,529.99	-3,979.7	-302.4	3,986.1	0.00	0.00	0.00
10,100.0	90.00	180.01	6,150.8	-1,529.99	-4,079.7	-302.4	4,086.0	0.00	0.00	0.00
10,200.0	90.00	180.01	6,150.8	-1,529.99	-4,179.7	-302.4	4,186.0	0.00	0.00	0.00
10,300.0	90.00	180.01	6,150.8	-1,529.99	-4,279.7	-302.4	4,286.0	0.00	0.00	0.00
10,400.0	90.00	180.01	6,150.8	-1,529.99	-4,379.7	-302.4	4,385.9	0.00	0.00	0.00
10,500.0	90.00	180.01	6,150.8	-1,529.99	-4,479.7	-302.5	4,485.9	0.00	0.00	0.00
10,600.0	90.00	180.01	6,150.8	-1,529.99	-4,579.7	-302.5	4,585.9	0.00	0.00	0.00
10,700.0	90.00	180.01	6,150.8	-1,530.00	-4,679.7	-302.5	4,685.9	0.00	0.00	0.00
10,800.0	90.00	180.01	6,150.8	-1,530.00	-4,779.7	-302.5	4,785.8	0.00	0.00	0.00
10,900.0	90.00	180.01	6,150.8	-1,530.00	-4,879.7	-302.5	4,885.8	0.00	0.00	0.00
11,000.0	90.00	180.01	6,150.8	-1,530.00	-4,979.7	-302.5	4,985.8	0.00	0.00	0.00
11,100.0	90.00	180.01	6,150.8	-1,530.00	-5,079.7	-302.5	5,085.7	0.00	0.00	0.00
11,200.0	90.00	180.01	6,150.8	-1,530.00	-5,179.7	-302.6	5,185.7	0.00	0.00	0.00
MID-LAT TGT: 0ft FNL & 2678ft FEL of Sec 14										
11,200.6	90.00	180.01	6,150.8	-1,530.00	-5,180.3	-302.6	5,186.3	0.00	0.00	0.00
EOT TO 179.42° AZ										
11,220.2	90.00	179.42	6,150.8	-1,530.00	-5,199.9	-302.5	5,205.9	2.99	0.00	-2.99
11,300.0	90.00	179.42	6,150.8	-1,530.00	-5,279.7	-301.6	5,285.6	0.00	0.00	0.00
11,400.0	90.00	179.42	6,150.8	-1,530.00	-5,379.7	-300.6	5,385.6	0.00	0.00	0.00
11,500.0	90.00	179.42	6,150.8	-1,530.00	-5,479.7	-299.6	5,485.5	0.00	0.00	0.00
11,600.0	90.00	179.42	6,150.8	-1,530.00	-5,579.7	-298.6	5,585.4	0.00	0.00	0.00
11,700.0	90.00	179.42	6,150.8	-1,530.00	-5,679.7	-297.6	5,685.4	0.00	0.00	0.00
11,800.0	90.00	179.42	6,150.8	-1,530.00	-5,779.7	-296.6	5,785.3	0.00	0.00	0.00
11,900.0	90.00	179.42	6,150.8	-1,530.00	-5,879.7	-295.6	5,885.3	0.00	0.00	0.00
12,000.0	90.00	179.42	6,150.8	-1,530.00	-5,979.7	-294.6	5,985.2	0.00	0.00	0.00
12,100.0	90.00	179.42	6,150.8	-1,530.00	-6,079.7	-293.6	6,085.1	0.00	0.00	0.00
12,200.0	90.00	179.42	6,150.8	-1,530.00	-6,179.7	-292.6	6,185.1	0.00	0.00	0.00
12,300.0	90.00	179.42	6,150.8	-1,530.00	-6,279.7	-291.6	6,285.0	0.00	0.00	0.00
12,400.0	90.00	179.42	6,150.8	-1,530.00	-6,379.7	-290.6	6,385.0	0.00	0.00	0.00
12,500.0	90.00	179.42	6,150.8	-1,530.00	-6,479.7	-289.5	6,484.9	0.00	0.00	0.00
12,600.0	90.00	179.42	6,150.8	-1,530.00	-6,579.7	-288.5	6,584.8	0.00	0.00	0.00
12,700.0	90.00	179.42	6,150.8	-1,530.00	-6,679.7	-287.5	6,684.8	0.00	0.00	0.00
12,800.0	90.00	179.42	6,150.8	-1,530.00	-6,779.6	-286.5	6,784.7	0.00	0.00	0.00
12,900.0	90.00	179.42	6,150.8	-1,530.00	-6,879.6	-285.5	6,884.6	0.00	0.00	0.00
13,000.0	90.00	179.42	6,150.8	-1,530.00	-6,979.6	-284.5	6,984.6	0.00	0.00	0.00
13,100.0	90.00	179.42	6,150.8	-1,530.00	-7,079.6	-283.5	7,084.5	0.00	0.00	0.00
13,200.0	90.00	179.42	6,150.8	-1,530.00	-7,179.6	-282.5	7,184.5	0.00	0.00	0.00
13,300.0	90.00	179.42	6,150.8	-1,530.00	-7,279.6	-281.5	7,284.4	0.00	0.00	0.00
13,400.0	90.00	179.42	6,150.8	-1,530.00	-7,379.6	-280.5	7,384.3	0.00	0.00	0.00
13,500.0	90.00	179.42	6,150.8	-1,530.00	-7,479.6	-279.5	7,484.3	0.00	0.00	0.00
13,600.0	90.00	179.42	6,150.8	-1,530.00	-7,579.6	-278.5	7,584.2	0.00	0.00	0.00

Database:	EDM 5000.1 Single User Db	Local Co-ordinate Reference:	Well STATE ANTELOPE K-11-14XRLNB
Company:	BONANZA CREEK ENERGY INC.	TVD Reference:	KB-EST @ 4620.8usft (Original Well Elev)
Project:	WELD COUNTY, COLORADO (NAD 83)	MD Reference:	KB-EST @ 4620.8usft (Original Well Elev)
Site:	NW NE SEC. 11 T5N R62W 6th P.M.	North Reference:	True
Well:	STATE ANTELOPE K-11-14XRLNB	Survey Calculation Method:	Minimum Curvature
Wellbore:	ORIGINAL WELLBORE		
Design:	PROPOSAL #1		

Planned Survey

MD (usft)	Inc (°)	Azi (°)	TVD (usft)	SS (usft)	+N/-S (usft)	+E/-W (usft)	Vertical Section (usft)	Dogleg Rate (°/100usft)	Build Rate (°/100usft)	Turn Rate (°/100usft)
13,700.0	90.00	179.42	6,150.8	-1,530.00	-7,679.6	-277.4	7,684.1	0.00	0.00	0.00
13,800.0	90.00	179.42	6,150.8	-1,530.00	-7,779.6	-276.4	7,784.1	0.00	0.00	0.00
13,900.0	90.00	179.42	6,150.8	-1,530.00	-7,879.6	-275.4	7,884.0	0.00	0.00	0.00
14,000.0	90.00	179.42	6,150.8	-1,530.00	-7,979.6	-274.4	7,984.0	0.00	0.00	0.00
14,100.0	90.00	179.42	6,150.8	-1,530.00	-8,079.6	-273.4	8,083.9	0.00	0.00	0.00
14,200.0	90.00	179.42	6,150.8	-1,530.00	-8,179.6	-272.4	8,183.8	0.00	0.00	0.00
14,300.0	90.00	179.42	6,150.8	-1,530.00	-8,279.6	-271.4	8,283.8	0.00	0.00	0.00
14,400.0	90.00	179.42	6,150.8	-1,530.00	-8,379.6	-270.4	8,383.7	0.00	0.00	0.00
14,500.0	90.00	179.42	6,150.8	-1,530.00	-8,479.6	-269.4	8,483.7	0.00	0.00	0.00
14,600.0	90.00	179.42	6,150.8	-1,530.00	-8,579.6	-268.4	8,583.6	0.00	0.00	0.00
14,700.0	90.00	179.42	6,150.8	-1,530.00	-8,679.5	-267.4	8,683.5	0.00	0.00	0.00
14,800.0	90.00	179.42	6,150.8	-1,530.00	-8,779.5	-266.3	8,783.5	0.00	0.00	0.00
14,900.0	90.00	179.42	6,150.8	-1,530.00	-8,879.5	-265.3	8,883.4	0.00	0.00	0.00
15,000.0	90.00	179.42	6,150.8	-1,530.00	-8,979.5	-264.3	8,983.3	0.00	0.00	0.00
15,100.0	90.00	179.42	6,150.8	-1,530.00	-9,079.5	-263.3	9,083.3	0.00	0.00	0.00
15,200.0	90.00	179.42	6,150.8	-1,530.00	-9,179.5	-262.3	9,183.2	0.00	0.00	0.00
15,300.0	90.00	179.42	6,150.8	-1,530.00	-9,279.5	-261.3	9,283.2	0.00	0.00	0.00
15,400.0	90.00	179.42	6,150.8	-1,530.00	-9,379.5	-260.3	9,383.1	0.00	0.00	0.00
15,500.0	90.00	179.42	6,150.8	-1,530.00	-9,479.5	-259.3	9,483.0	0.00	0.00	0.00
15,600.0	90.00	179.42	6,150.8	-1,530.00	-9,579.5	-258.3	9,583.0	0.00	0.00	0.00
15,700.0	90.00	179.42	6,150.8	-1,530.00	-9,679.5	-257.3	9,682.9	0.00	0.00	0.00
15,800.0	90.00	179.42	6,150.8	-1,530.00	-9,779.5	-256.3	9,782.8	0.00	0.00	0.00
15,900.0	90.00	179.42	6,150.8	-1,530.00	-9,879.5	-255.3	9,882.8	0.00	0.00	0.00
16,000.0	90.00	179.42	6,150.8	-1,530.00	-9,979.5	-254.2	9,982.7	0.00	0.00	0.00
BHL: 470ft FSL & 2618ft FEL of Sec 14										
16,095.4	90.00	179.42	6,150.8	-1,530.00	-10,074.8	-253.3	10,078.0	0.00	0.00	0.00

Plan Annotations

MD (usft)	TVD (usft)	Local Coordinates		Comment
		+N/-S (usft)	+E/-W (usft)	
0.0	0.0	0.0	0.0	SHL: 198ft FNL & 2387ft FEL of Sec 11
1,550.0	1,550.0	0.0	0.0	SURFACE CASING
2,450.0	2,450.0	0.0	0.0	START NUDGE (2°/100ft BUR)
3,050.0	3,045.7	30.4	-54.7	EOB TO 12° INC
4,107.6	4,080.1	137.1	-247.0	END OF TANGENT
4,707.6	4,675.7	167.5	-301.7	EOD TO VERTICAL
5,440.6	5,408.7	167.5	-301.7	KOP (8°/100ft BUR)
6,378.1	6,100.5	-363.4	-301.8	START OF TANGENT
6,478.1	6,126.4	-460.0	-301.8	END OF TANGENT
6,665.6	6,150.8	-645.3	-301.8	HZ LP *NEW*: 827.8ft FNL & 2688ft FEL of Sec 11
11,200.6	6,150.8	-5,180.3	-302.6	MID-LAT TGT: 0ft FNL & 2678ft FEL of Sec 14
11,220.2	6,150.8	-5,199.9	-302.5	EOT TO 179.42° AZ
16,095.4	6,150.8	-10,074.8	-253.3	BHL: 470ft FSL & 2618ft FEL of Sec 14