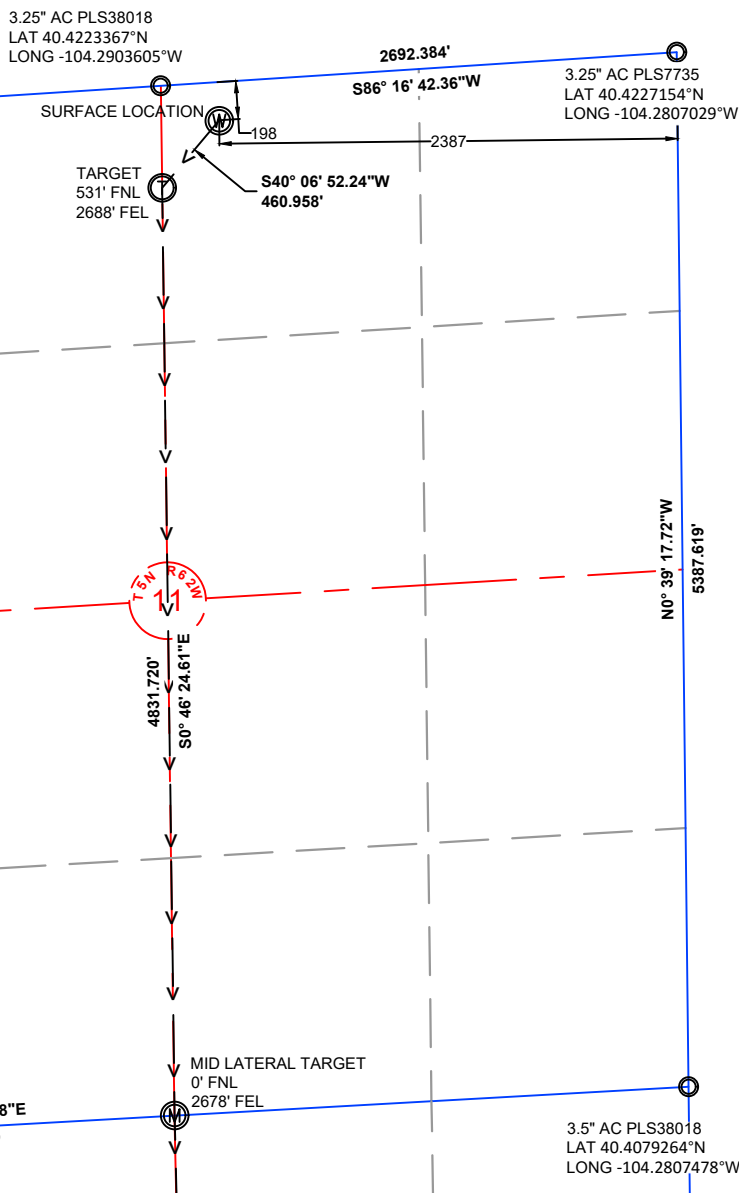


NOTE: UNDER COLORADO LAW, YOU MUST COMMENCE ANY LEGAL ACTION BASED ON ANY DEFECT IN THIS CERTIFICATE WITHIN THREE YEARS AFTER DEFECT IS DISCOVERED. IN NO EVENT MAY ANY ACTION BASED UPON ANY DEFECT IN THIS SURVEY BE COMMENCED MORE THAN TEN YEARS AFTER DATE OF THIS CERTIFICATE SHOWN HEREON. (13-80105 C.R.S.)

NOTES:

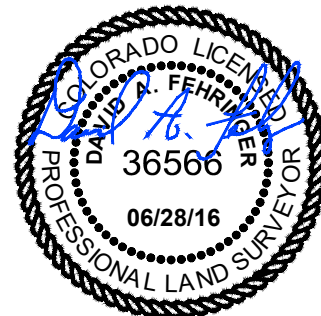
- ALL BEARINGS ARE GRID BASED UPON THE COLORADO STATE PLANE COORDINATE SYSTEM, NORTH ZONE, NAD83(2011) DERIVED FROM POST-PROCESSED STATIC GPS OBSERVATIONS.
- DISTANCES ARE ON GRID
- VERTICAL DATUM IS NAVD88 BASED UPON GPS OBSERVATIONS
- PDOP VALUE EQUALS 1.6.
- GPS OPERATOR: MARC MAYER.
- GROUND ELEVATION AT WELLHEAD = 4603.8'
- ALL SECTION LENGTHS ARE MEASURED DISTANCES UNLESS NOTED BY (R), RECORD BEARING AND DISTANCE.
- NEAREST CULTURAL DISTANCES
BUILDINGS: 5280' +/-
BUILDING UNIT: 5280' +/-
HIGH OCCUPANCY BUILDING UNIT: 5280'+
DESIGNATED OUTSIDE ACTIVITY AREA: 5280'+
PUBLIC ROAD: 5280'+
ABOVE GROUND UTILITY: 844' +/-
RAILROAD: 5280'+
PROPERTY LINE: 198' +/-

2		STATE PLANE COORDINATES		
K-11-14XRLNB	LATITUDE	LONGITUDE	NORTHING	EASTING
SURFACE	40.4218336	-104.2892789	1398815.50	3337079.29
TARGET 1	40.4208771	-104.2903628	1398462.98	3336782.29
MID LATERAL	40.4076140	-104.2903653	1393631.70	3336847.51
BOTTOM HOLE	40.3941791	-104.2901882	1388738.53	3336963.60



CERTIFICATE OF SURVEYOR:

I, DAVID A. FEHRINGER OF LANDER, WYOMING HEREBY CERTIFY THAT THIS WELL LOCATION CERTIFICATE WAS PREPARED FROM NOTES TAKEN DURING AN ACTUAL SURVEY ON JUNE 03, 2016; AND THAT IT CORRECTLY SHOWS THE DRILLING LOCATION OF BONANZA CREEK ENERGY, INC. STATE ANTELOPE K-11-14XRLNB AS STAKED DURING SAID SURVEY. THIS MAP DOES NOT REPRESENT A BOUNDARY SURVEY OR AN IMPROVEMENT LOCATION PLAT AND SHOULD NOT BE USED FOR THE ESTABLISHMENT OF BOUNDARY LINES.

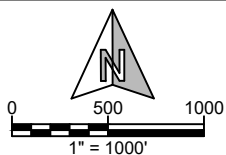


PAD CORNERS		NAD 83	
SA 31-11 PAD	LATITUDE	LONGITUDE	
NW	40.4223216	-104.2903657	
NE	40.4223313	-104.2886724	
SE	40.4213608	-104.2886011	
SW	40.421281	-104.2903308	



**WILLIAM H. SMITH &
ASSOCIATES, Inc.**
155 N. 1st Street
Lander, WY 82520
Phone: 307-335-5646

Drawn By: MAM
Job No.: 15043
Checked By: DAF
Date: 06/28/16
Revision:



IF BAR LENGTH DOES NOT EQUAL 1"(ONE INCH), THIS PAGE WAS NOT PLOTTED TO THE INTENDED SCALE.

LOCATION CERTIFICATE
STATE ANTELOPE
K-11-14XRLNB
SURFACE

NW $\frac{1}{4}$ NE $\frac{1}{4}$, SECTION 11,
T.5N., R.62W., 6th PM
WELD COUNTY, COLORADO



410 17th Street
Denver, CO 80202
(720) 440-6100

SHEET
1
OF
2

NOTE: UNDER COLORADO LAW, YOU MUST COMMENCE ANY LEGAL ACTION BASED ON ANY DEFECT IN THIS CERTIFICATE WITHIN THREE YEARS AFTER DEFECT IS DISCOVERED. IN NO EVENT MAY ANY ACTION BASED UPON ANY DEFECT IN THIS SURVEY BE COMMENCED MORE THAN TEN YEARS AFTER DATE OF THIS CERTIFICATE SHOWN HEREON. (13-80105 C.R.S)

3.5" AC PLS7242
 LAT 40.4073005°N
 LONG -104.299994°W

N86° 46' 57.48"E
 5364.503'

MID LATERAL TARGET
 0' FNL
 2678' FEL

3.5" AC PLS38018
 LAT 40.4079264°N
 LONG -104.2807478°W

N1° 55' 13.66"W
 5342.880'

4894.552'
 S1° 21' 32.38"E
 14

5387.486'
 S0° 39' 23.67"E

3.5" AC PLS22098
 LAT 40.3926372°N
 LONG -104.2996106°W

5244.878'
 S87° 13' 33.95°W

BOTTOM HOLE LOCATION

470

2618

3" AC PLS17492
 LAT 40.3931377°N
 LONG -104.2807921°W

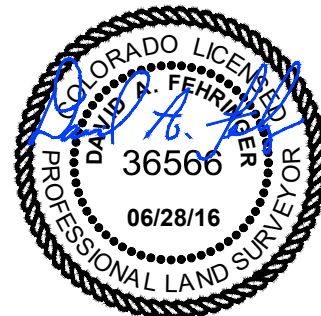
NOTES:

- ALL BEARINGS ARE GRID BASED UPON THE COLORADO STATE PLANE COORDINATE SYSTEM, NORTH ZONE, NAD83(2011) DERIVED FROM POST-PROCESSED STATIC GPS OBSERVATIONS.
- DISTANCES ARE ON GRID
- VERTICAL DATUM IS NAVD88 BASED UPON GPS OBSERVATIONS
- PDOP VALUE EQUALS 1.6.
- GPS OPERATOR: MARC MAYER.
- GROUND ELEVATION AT WELLHEAD = 4603.8'
- ALL SECTION LENGTHS ARE MEASURED DISTANCES UNLESS NOTED BY (R), RECORD BEARING AND DISTANCE.
- NEAREST CULTURAL DISTANCES
 BUILDINGS: 5280' +/-
 BUILDING UNIT: 5280' +/-
 HIGH OCCUPANCY BUILDING UNIT: 5280'+
 DESIGNATED OUTSIDE ACTIVITY AREA: 5280'+
 PUBLIC ROAD: 5280'+
 ABOVE GROUND UTILITY: 844' +/-
 RAILROAD: 5280'+
 PROPERTY LINE: 198' +/-

2	STATE PLANE COORDINATES			
K-11-14XRLNB	LATITUDE	LONGITUDE	NORTHING	EASTING
SURFACE	40.4218336	-104.2892789	1398815.50	3337079.29
TARGET 1	40.4208771	-104.2903628	1398462.98	3336782.29
MID LATERAL	40.4076140	-104.2903653	1393631.70	3336847.51
BOTTOM HOLE	40.3941791	-104.2901882	1388738.53	3336963.60

CERTIFICATE OF SURVEYOR:

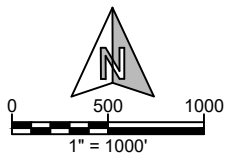
I, DAVID A. FEHRINGER OF LANDER, WYOMING HEREBY CERTIFY THAT THIS WELL LOCATION CERTIFICATE WAS PREPARED FROM NOTES TAKEN DURING AN ACTUAL SURVEY ON JUNE 03, 2016; AND THAT IT CORRECTLY SHOWS THE DRILLING LOCATION OF BONANZA CREEK ENERGY, INC. STATE ANTELOPE K-11-14XRLNB AS STAKED DURING SAID SURVEY. THIS MAP DOES NOT REPRESENT A BOUNDARY SURVEY OR AN IMPROVEMENT LOCATION PLAT AND SHOULD NOT BE USED FOR THE ESTABLISHMENT OF BOUNDARY LINES.



PAD CORNERS	NAD 83	
SA 31-11 PAD	LATITUDE	LONGITUDE
NW	40.4223216	-104.2903657
NE	40.4223313	-104.2886724
SE	40.4213608	-104.2886011
SW	40.421281	-104.2903308



**WILLIAM H. SMITH &
 ASSOCIATES, Inc.**
 155 N. 1st Street
 Lander, WY 82520
 Phone: 307-335-5646



Drawn By: MAM
 Job No.: 15043
 Checked By: DAF
 Date: 06/28/16
 Revision:

IF BAR LENGTH DOES NOT EQUAL 1"(ONE INCH), THIS PAGE WAS NOT PLOTTED TO THE INTENDED SCALE.

LOCATION CERTIFICATE

STATE ANTELOPE
K-11-14XRLNB
BOTTOM HOLE
 SW¼ SE¼, SECTION 14,
 T.5N., R.62W., 6th PM
 WELD COUNTY, COLORADO



410 17th Street
 Denver, CO 80202
 (720) 440-6100

SHEET
 2
 OF
 2