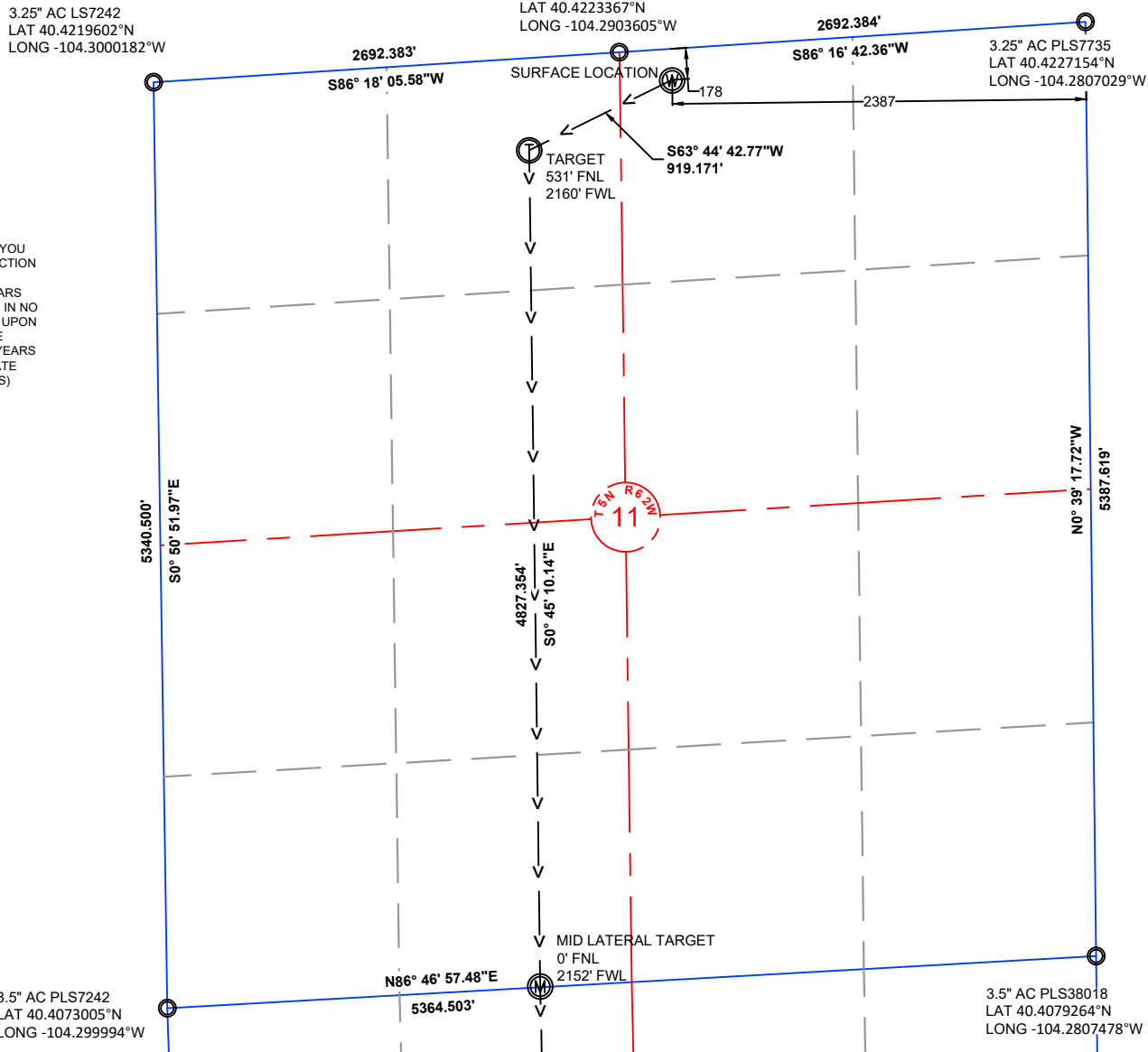


NOTE: UNDER COLORADO LAW, YOU MUST COMMENCE ANY LEGAL ACTION BASED ON ANY DEFECT IN THIS CERTIFICATE WITHIN THREE YEARS AFTER DEFECT IS DISCOVERED. IN NO EVENT MAY ANY ACTION BASED UPON ANY DEFECT IN THIS SURVEY BE COMMENCED MORE THAN TEN YEARS AFTER DATE OF THIS CERTIFICATE SHOWN HEREON. (13-80105 C.R.S.)



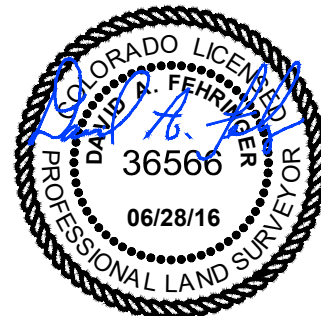
## NOTES:

- ALL BEARINGS ARE GRID BASED UPON THE COLORADO STATE PLANE COORDINATE SYSTEM, NORTH ZONE, NAD83(2011) DERIVED FROM POST-PROCESSED STATIC GPS OBSERVATIONS.
- DISTANCES ARE ON GRID
- VERTICAL DATUM IS NAVD88 BASED UPON GPS OBSERVATIONS
- PDOP VALUE EQUALS 1.6
- GPS OPERATOR: MARC MAYER.
- GROUND ELEVATION AT WELLHEAD = 4603.8'
- ALL SECTION LENGTHS ARE MEASURED DISTANCES UNLESS NOTED BY (R), RECORD BEARING AND DISTANCE.
- NEAREST CULTURAL DISTANCES  
BUILDINGS: 5280' +/-  
BUILDING UNIT: 5280' +/-  
HIGH OCCUPANCY BUILDING UNIT: 5280'+  
DESIGNATED OUTSIDE ACTIVITY AREA: 5280'+  
PUBLIC ROAD: 5280'+  
ABOVE GROUND UTILITY: 824' +/-  
RAILROAD: 5280'+  
PROPERTY LINE: 178' +/-

1	NAD 83		STATE PLANE COORDINATES	
21-11-14XRLNB	LATITUDE	LONGITUDE	NORTHING	EASTING
SURFACE	40.4218885	-104.2892779	1398835.50	3337079.29
TARGET 1	40.4208033	-104.2922583	1398428.89	3336254.94
MID LATERAL	40.4075522	-104.2922667	1393601.96	3336318.37
BOTTOM HOLE	40.3941284	-104.2920943	1388712.82	3336432.99

## CERTIFICATE OF SURVEYOR:

I, DAVID A. FEHRINGER OF LANDER, WYOMING HEREBY CERTIFY THAT THIS WELL LOCATION CERTIFICATE WAS PREPARED FROM NOTES TAKEN DURING AN ACTUAL SURVEY ON JUNE 03, 2016; AND THAT IT CORRECTLY SHOWS THE DRILLING LOCATION OF BONANZA CREEK ENERGY, INC. STATE ANTELOPE 21-11-14XRLNB AS STAKED DURING SAID SURVEY. THIS MAP DOES NOT REPRESENT A BOUNDARY SURVEY OR AN IMPROVEMENT LOCATION PLAT AND SHOULD NOT BE USED FOR THE ESTABLISHMENT OF BOUNDARY LINES.

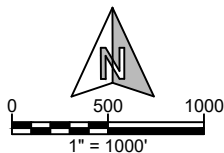


PAD CORNERS	NAD 83	
SA 31-11 PAD	LATITUDE	LONGITUDE
NW	40.4223216	-104.2903657
NE	40.4223313	-104.2886724
SE	40.4213608	-104.2886011
SW	40.421281	-104.2903308



**WILLIAM H. SMITH &  
ASSOCIATES, Inc.**  
155 N. 1st Street  
Lander, WY 82520  
Phone: 307-335-5646

Drawn By: MAM  
Job No.: 15043  
Checked By: DAF  
Date: 06/28/16  
Revision:



IF BAR LENGTH DOES NOT EQUAL 1"(ONE INCH), THIS PAGE WAS NOT PLOTTED TO THE INTENDED SCALE.

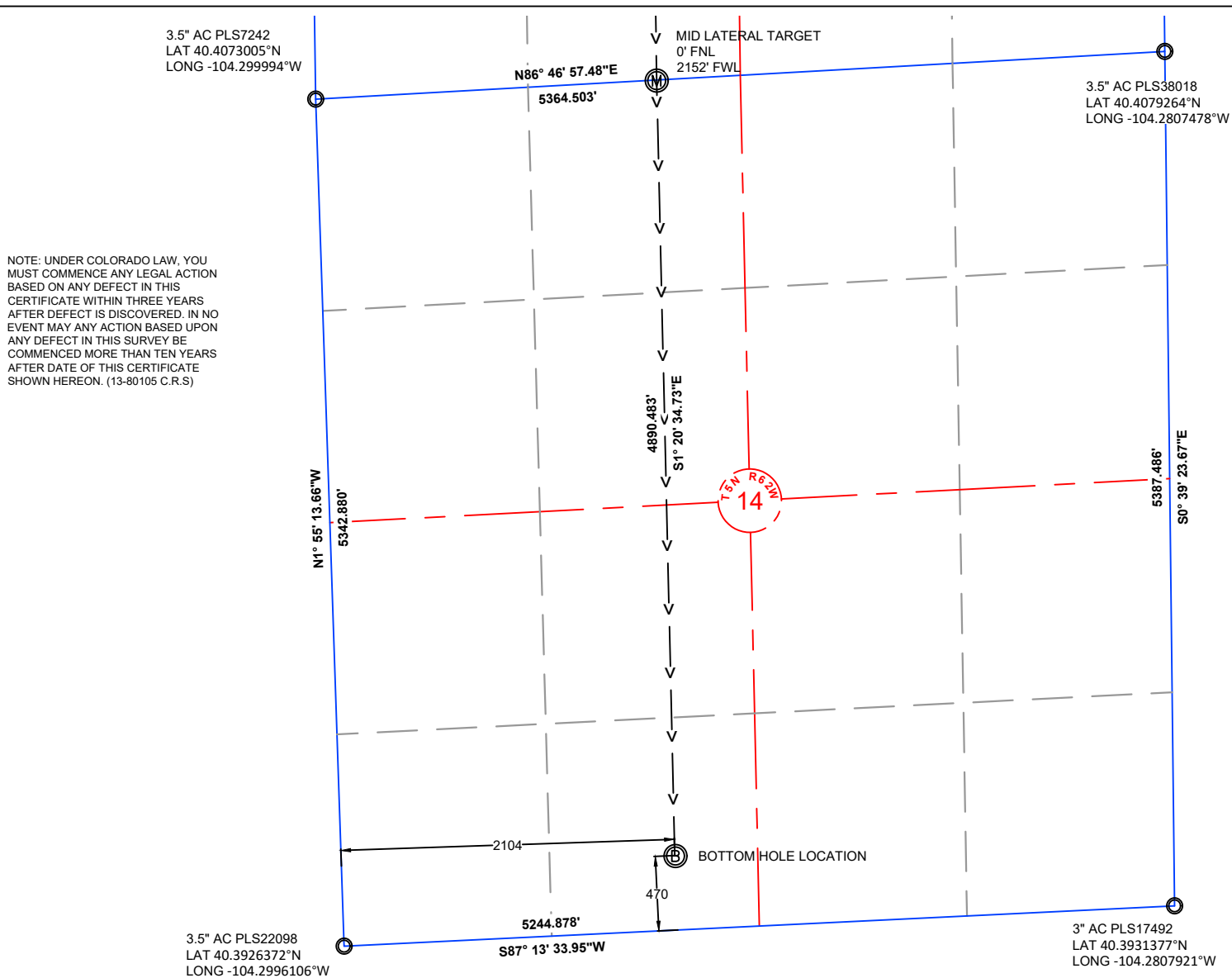
**LOCATION CERTIFICATE**  
**STATE ANTELOPE**  
**21-11-14XRLNB**  
**SURFACE**

NW $\frac{1}{4}$  NE $\frac{1}{4}$ , SECTION 11,  
T.5N., R.62W., 6th PM  
WELD COUNTY, COLORADO



410 17th Street  
Denver, CO 80202  
(720) 440-6100

SHEET  
1  
OF  
2



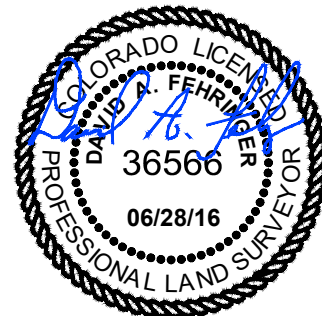
## NOTES:

- ALL BEARINGS ARE GRID BASED UPON THE COLORADO STATE PLANE COORDINATE SYSTEM, NORTH ZONE, NAD83(2011) DERIVED FROM POST-PROCESSED STATIC GPS OBSERVATIONS.
- DISTANCES ARE ON GRID
- VERTICAL DATUM IS NAVD88 BASED UPON GPS OBSERVATIONS
- PDOP VALUE EQUALS 1.6.
- GPS OPERATOR: MARC MAYER.
- GROUND ELEVATION AT WELLHEAD = 4603.8'
- ALL SECTION LENGTHS ARE MEASURED DISTANCES UNLESS NOTED BY (R), RECORD BEARING AND DISTANCE.
- NEAREST CULTURAL DISTANCES  
BUILDINGS: 5280' +/-  
BUILDING UNIT: 5280' +/-  
HIGH OCCUPANCY BUILDING UNIT: 5280'+  
DESIGNATED OUTSIDE ACTIVITY AREA: 5280'+  
PUBLIC ROAD: 5280'+  
ABOVE GROUND UTILITY: 824' +/-  
RAILROAD: 5280'+  
PROPERTY LINE: 178' +/-

1	NAD 83		STATE PLANE COORDINATES	
21-11-14XRLNB	LATITUDE	LONGITUDE	NORTHING	EASTING
SURFACE	40.4218885	-104.2892779	1398835.50	3337079.29
TARGET 1	40.4208033	-104.2922583	1398428.89	3336254.94
MID LATERAL	40.4075522	-104.2922667	1393601.96	3336318.37
BOTTOM HOLE	40.3941284	-104.2920943	1388712.82	3336432.99

## CERTIFICATE OF SURVEYOR:

I, DAVID A. FEHRINGER OF LANDER, WYOMING HEREBY CERTIFY THAT THIS WELL LOCATION CERTIFICATE WAS PREPARED FROM NOTES TAKEN DURING AN ACTUAL SURVEY ON JUNE 03, 2016; AND THAT IT CORRECTLY SHOWS THE DRILLING LOCATION OF BONANZA CREEK ENERGY, INC. STATE ANTELOPE 21-11-14XRLNB AS STAKED DURING SAID SURVEY. THIS MAP DOES NOT REPRESENT A BOUNDARY SURVEY OR AN IMPROVEMENT LOCATION PLAT AND SHOULD NOT BE USED FOR THE ESTABLISHMENT OF BOUNDARY LINES.



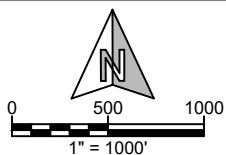
PAD CORNERS	NAD 83	
SA 31-11 PAD	LATITUDE	LONGITUDE
NW	40.4223216	-104.2903657
NE	40.4223313	-104.2886724
SE	40.4213608	-104.2886011
SW	40.421281	-104.2903308



**WILLIAM H. SMITH &  
ASSOCIATES, Inc.**  
155 N. 1st Street  
Lander, WY 82520  
Phone: 307-335-5646

Drawn By: MAM  
Job No.: 15043  
Revision:

Checked By: DAF  
Date: 06/28/16



IF BAR LENGTH DOES NOT EQUAL  
1"(ONE INCH), THIS PAGE WAS NOT  
PLOTTED TO THE INTENDED SCALE.

## LOCATION CERTIFICATE

STATE ANTELOPE  
**21-11-14XRLNB  
BOTTOM HOLE**  
SE $\frac{1}{4}$  SW $\frac{1}{4}$ , SECTION 14,  
T.5N., R.62W., 6th PM  
WELD COUNTY, COLORADO



410 17th Street  
Denver, CO 80202  
(720) 440-6100

SHEET

2

OF

2