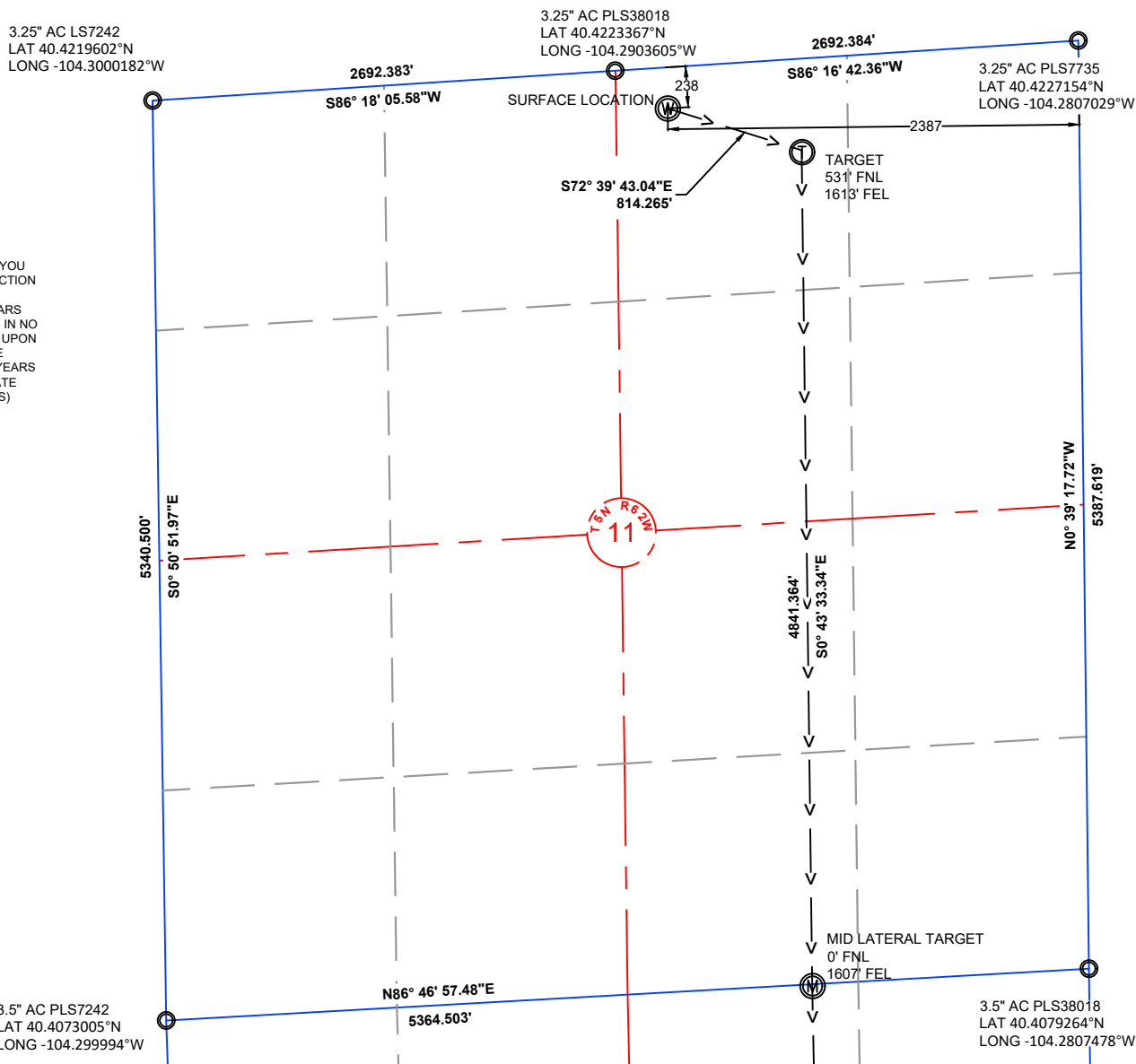


NOTE: UNDER COLORADO LAW, YOU MUST COMMENCE ANY LEGAL ACTION BASED ON ANY DEFECT IN THIS CERTIFICATE WITHIN THREE YEARS AFTER DEFECT IS DISCOVERED. IN NO EVENT MAY ANY ACTION BASED UPON ANY DEFECT IN THIS SURVEY BE COMMENCED MORE THAN TEN YEARS AFTER DATE OF THIS CERTIFICATE SHOWN HEREON. (13-80105 C.R.S.)



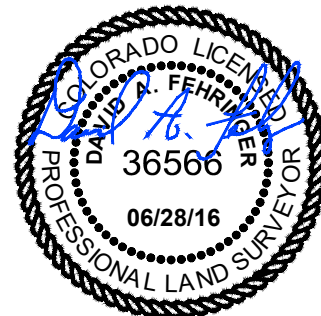
NOTES:

- ALL BEARINGS ARE GRID BASED UPON THE COLORADO STATE PLANE COORDINATE SYSTEM, NORTH ZONE, NAD83(2011) DERIVED FROM POST-PROCESSED STATIC GPS OBSERVATIONS.
- DISTANCES ARE ON GRID
- VERTICAL DATUM IS NAVD88 BASED UPON GPS OBSERVATIONS
- PDOP VALUE EQUALS 1.6.
- GPS OPERATOR: MARC MAYER.
- GROUND ELEVATION AT WELLHEAD = 4603.8'
- ALL SECTION LENGTHS ARE MEASURED DISTANCES UNLESS NOTED BY (R), RECORD BEARING AND DISTANCE.
- NEAREST CULTURAL DISTANCES
 BUILDINGS: 5280' +/-
 BUILDING UNIT: 5280' +/-
 HIGH OCCUPANCY BUILDING UNIT: 5280'+
 DESIGNATED OUTSIDE ACTIVITY AREA: 5280'+
 PUBLIC ROAD: 5280'+
 ABOVE GROUND UTILITY: 884' +/-
 RAILROAD: 5280'+
 PROPERTY LINE: 238' +/-

4	STATE PLANE COORDINATES			
P31-11-14XRLNB	LATITUDE	LONGITUDE	NORTHING	EASTING
SURFACE	40.4217238	-104.2892809	1398775.50	3337079.29
TARGET 1	40.4210286	-104.2865014	1398532.85	3337856.56
MID LATERAL	40.4077390	-104.2865190	1393691.87	3337917.90
BOTTOM HOLE	40.3942790	-104.2864289	1388789.23	3338010.08

CERTIFICATE OF SURVEYOR:

I, DAVID A. FEHRINGER OF LANDER, WYOMING HEREBY CERTIFY THAT THIS WELL LOCATION CERTIFICATE WAS PREPARED FROM NOTES TAKEN DURING AN ACTUAL SURVEY ON JUNE 03, 2016; AND THAT IT CORRECTLY SHOWS THE DRILLING LOCATION OF BONANZA CREEK ENERGY, INC. STATE ANTELOPE P31-11-14XRLNB AS STAKED DURING SAID SURVEY. THIS MAP DOES NOT REPRESENT A BOUNDARY SURVEY OR AN IMPROVEMENT LOCATION PLAT AND SHOULD NOT BE USED FOR THE ESTABLISHMENT OF BOUNDARY LINES.

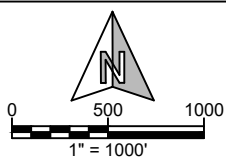


PAD CORNERS	NAD83	
SA 31-11 PAD	LATITUDE	LONGITUDE
NW	40.4223216	-104.2903657
NE	40.4223313	-104.2886724
SE	40.4213608	-104.2886011
SW	40.421281	-104.2903308



WILLIAM H. SMITH & ASSOCIATES, Inc.
 155 N. 1st Street
 Lander, WY 82520
 Phone: 307-335-5646

Drawn By: MAM
 Job No.: 15043
 Checked By: DAF
 Date: 06/28/16
 Revision:



IF BAR LENGTH DOES NOT EQUAL 1"(ONE INCH), THIS PAGE WAS NOT PLOTTED TO THE INTENDED SCALE.

LOCATION CERTIFICATE

STATE ANTELOPE
P31-11-14XRLNB
SURFACE

NW $\frac{1}{4}$ NE $\frac{1}{4}$, SECTION 11,
 T.5N., R.62W., 6th PM

WELD COUNTY, COLORADO



410 17th Street
 Denver, CO 80202
 (720) 440-6100

SHEET

1

OF

2

3.5" AC PLS7242
 LAT 40.4073005°N
 LONG -104.299994°W

N86° 46' 57.48"E
 5364.503'

MID LATERAL TARGET
 0' FNL
 1607' FEL

3.5" AC PLS38018
 LAT 40.4079264°N
 LONG -104.2807478°W

NOTE: UNDER COLORADO LAW, YOU MUST COMMENCE ANY LEGAL ACTION BASED ON ANY DEFECT IN THIS CERTIFICATE WITHIN THREE YEARS AFTER DEFECT IS DISCOVERED. IN NO EVENT MAY ANY ACTION BASED UPON ANY DEFECT IN THIS SURVEY BE COMMENCED MORE THAN TEN YEARS AFTER DATE OF THIS CERTIFICATE SHOWN HEREON. (13-80105 C.R.S.)

N1° 55' 13.66"W

5342.880'

14

4903.507'
 S1° 04' 38.10"E

5387.486'
 S0° 39' 23.67"E

3.5" AC PLS22098
 LAT 40.3926372°N
 LONG -104.2996106°W

5244.878'
 S87° 13' 33.95"W

3" AC PLS17492
 LAT 40.3931377°N
 LONG -104.2807921°W

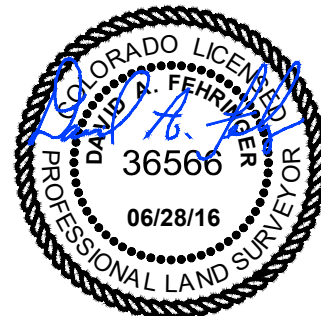
NOTES:

- ALL BEARINGS ARE GRID BASED UPON THE COLORADO STATE PLANE COORDINATE SYSTEM, NORTH ZONE, NAD83(2011) DERIVED FROM POST-PROCESSED STATIC GPS OBSERVATIONS.
- DISTANCES ARE ON GRID
- VERTICAL DATUM IS NAVD88 BASED UPON GPS OBSERVATIONS
- PDOP VALUE EQUALS 1.6.
- GPS OPERATOR: MARC MAYER.
- GROUND ELEVATION AT WELLHEAD = 4603.8'
- ALL SECTION LENGTHS ARE MEASURED DISTANCES UNLESS NOTED BY (R), RECORD BEARING AND DISTANCE.
- NEAREST CULTURAL DISTANCES
 BUILDINGS: 5280' +/-
 BUILDING UNIT: 5280' +/-
 HIGH OCCUPANCY BUILDING UNIT: 5280'+
 DESIGNATED OUTSIDE ACTIVITY AREA: 5280'+
 PUBLIC ROAD: 5280'+
 ABOVE GROUND UTILITY: 884' +/-
 RAILROAD: 5280'+
 PROPERTY LINE: 238' +/-

4	STATE PLANE COORDINATES			
P31-11-14XRLNB	LATITUDE	LONGITUDE	NORTHING	EASTING
SURFACE	40.4217238	-104.2892809	1398775.50	3337079.29
TARGET 1	40.4210286	-104.2865014	1398532.85	3337856.56
MID LATERAL	40.4077390	-104.2865190	1393691.87	3337917.90
BOTTOM HOLE	40.3942790	-104.2864289	1388789.23	3338010.08

CERTIFICATE OF SURVEYOR:

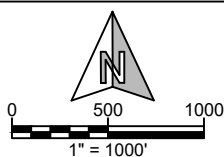
I, DAVID A. FEHRINGER OF LANDER, WYOMING HEREBY CERTIFY THAT THIS WELL LOCATION CERTIFICATE WAS PREPARED FROM NOTES TAKEN DURING AN ACTUAL SURVEY ON JUNE 03, 2016; AND THAT IT CORRECTLY SHOWS THE DRILLING LOCATION OF BONANZA CREEK ENERGY, INC. STATE ANTELOPE P31-11-14XRLNB AS STAKED DURING SAID SURVEY. THIS MAP DOES NOT REPRESENT A BOUNDARY SURVEY OR AN IMPROVEMENT LOCATION PLAT AND SHOULD NOT BE USED FOR THE ESTABLISHMENT OF BOUNDARY LINES.



PAD CORNERS	NAD83	
SA 31-11 PAD	LATITUDE	LONGITUDE
NW	40.4223216	-104.2903657
NE	40.4223313	-104.2886724
SE	40.4213608	-104.2886011
SW	40.421281	-104.2903308



**WILLIAM H. SMITH &
 ASSOCIATES, Inc.**
 155 N. 1st Street
 Lander, WY 82520
 Phone: 307-335-5646



Drawn By: MAM
 Job No.: 15043
 Checked By: DAF
 Date: 06/28/16
 Revision:

IF BAR LENGTH DOES NOT EQUAL 1"(ONE INCH), THIS PAGE WAS NOT PLOTTED TO THE INTENDED SCALE.

LOCATION CERTIFICATE

STATE ANTELOPE
P31-11-14XRLNB
BOTTOM HOLE
 SW¼ SE¼, SECTION 14,
 T.5N., R.62W., 6th PM
 WELD COUNTY, COLORADO



410 17th Street
 Denver, CO 80202
 (720) 440-6100

SHEET
 2
 OF
 2