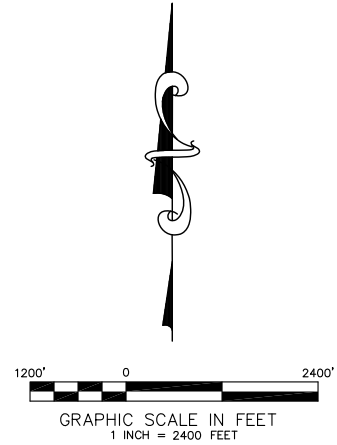
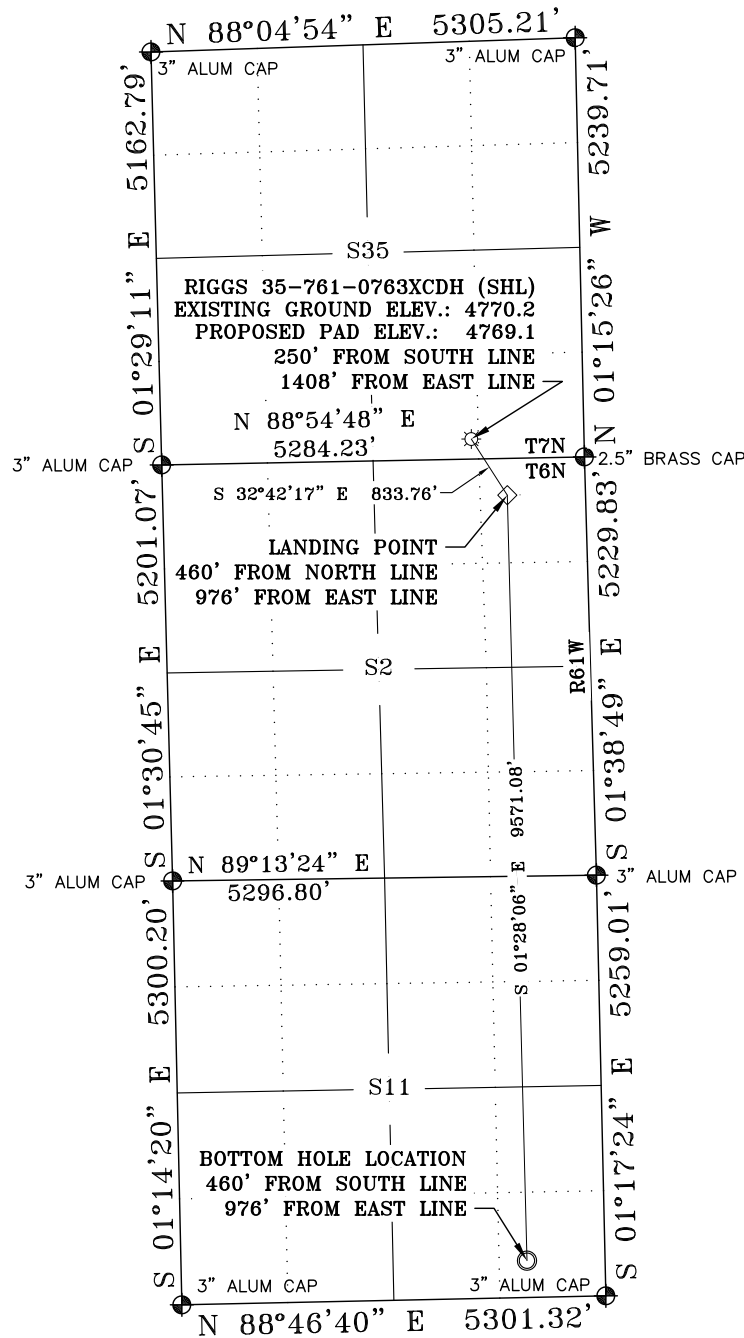


RIGGS 35-761-0763XCDH LOCATION PLAT



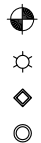
LEGEND:

FIELD LOCATED SECTION MONUMENTS AS DESCRIBED

SURFACE HOLE LOCATION (SHL)

LANDING POINT (LPL)

BOTTOM HOLE LOCATION (BHL)



NOTES:

- 1) ELEVATIONS ARE BASED ON NGS STATION "PARACHINI" WITH A PUBLISHED ELEVATION OF 1434.1 METERS.
- 2) LATITUDES AND LONGITUDES ARE BASED ON NAD 83 COLORADO NORTH ZONE.
- 3) WELL MEASURED 90° FROM SECTION LINES.
- 4) THE BASIS OF BEARING IS FROM GPS OBSERVATION RESULTING IN THE BEARING BETWEEN THE FOUND MONUMENTS AS SHOWN.
- 5) ELEVATION MASK SET TO 15°
- 6) PDOP SET TO 6
- 7) DATE OF FIELD SURVEY: 06/08/16

SURVEYORS STATEMENT:

I, JAMES A. KALMON, A REGISTERED LAND SURVEYOR IN THE STATE OF COLORADO DO HEREBY CERTIFY THAT THE SURVEY SHOWN HEREON WAS PREPARED BY ME OR UNDER MY DIRECT SUPERVISION AND THAT THIS PLAT IS A TRUE REPRESENTATION THEREOF. I FURTHER CERTIFY THAT THIS LOCATION HAS BEEN STAKED ON THE GROUND AS SHOWN ON THIS PLAT.



JAMES A. KALMON, COLORADO REGISTRATION NO. 38050
FOR AND ON BEHALF OF ECLIPSE SURVEYING, INC.

CLOSEST WELL IN SAME FORMATION

WELL NAME	DIRECTION	DISTANCE	
RIGGS 35-761-0561XCDH	S 88°55' W	1110'	PROPOSED
N/A	N/A	>1MI	EXISTING

	WELL NAME	NORTHING	EASTING	LAT NAD 83	LONG NAD 83
SHL	RIGGS 35-761-0763XCDH	1436869.4	3369173.7	N 40.525019	W 104.171972
LPL	LANDING POINT	1436167.9	3369624.2	N 40.523075	W 104.170389
BHL	BOTTOM HOLE LOCATION	1426599.9	3369869.5	N 40.496804	W 104.170023



ECLIPSE
Surveying, Inc.
1874 Six Lazy K Rd., New Castle, CO 81647
(970) 876-5939

REV. DATE: 08/02/16
SCALE: 1" = 2400'
DATE: 07/29/16
SHEET: 1 OF 1
PROJECT: S35-761
DFT: JAK

CAERUS
OIL AND GAS LLC
1001 17th Street, Suite 1600, Denver, CO 80202

RIGGS 35-761-0763XCDH
LOCATION PLAT