

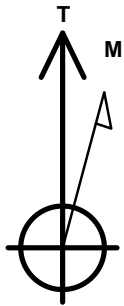
Caerus Oil and Gas LLC

Well Name: **Riggs 35-761-0561XCH**

Surface Location: Riggs OP 35-761 Pad Sec.35-T7N-R61W
 North American Datum 1983 , US State Plane 1983, Colorado Northern Zone
 Ground Elevation: 4769.0
 +N/-S +E/-W Northing Easting Latitude Longitude Slot
 0.0 0.0 1436866.59 3369023.84 40.525017 -104.172511
 RKB - 30' WELL @ 4799.0ft (RKB - 30')

WELLBORE TARGET DETAILS

Name	TVD	+N/-S	+E/-W	Shape
SHL 250'FSL, 1558'FEL, SEC.35	1.0	0.0	0.0	Point
BHL 460'FSL, 2561'FEL, SEC.11	6324.0	-10288.7	-893.1	Point
LPL 460'FNL, 2561'FEL, SEC.2	6439.0	-714.0	-995.3	Point



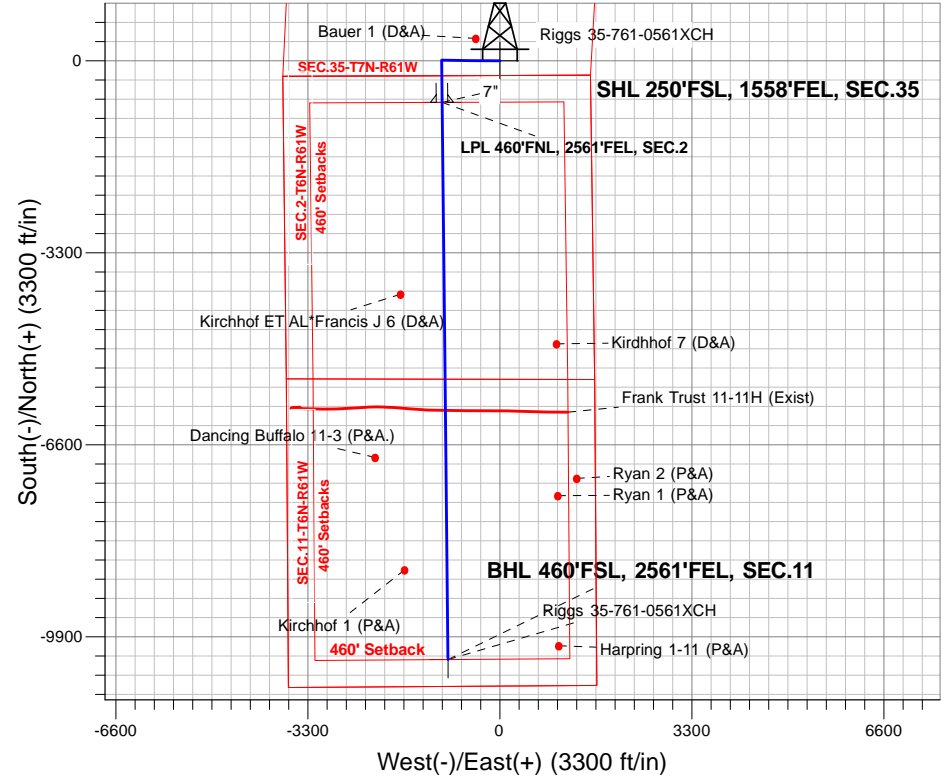
Azimuths to True North
 Magnetic North: 7.83°

Magnetic Field
 Strength: 52697.1snT
 Dip Angle: 67.06°
 Date: 10/4/2016
 Model: IGRF2010

Riggs OP 35-761 Pad Sec.35-T7N-R61W
 Riggs 35-761-0561XCH
 Plan #1 (9-29-16)
 10:14, October 04 2016

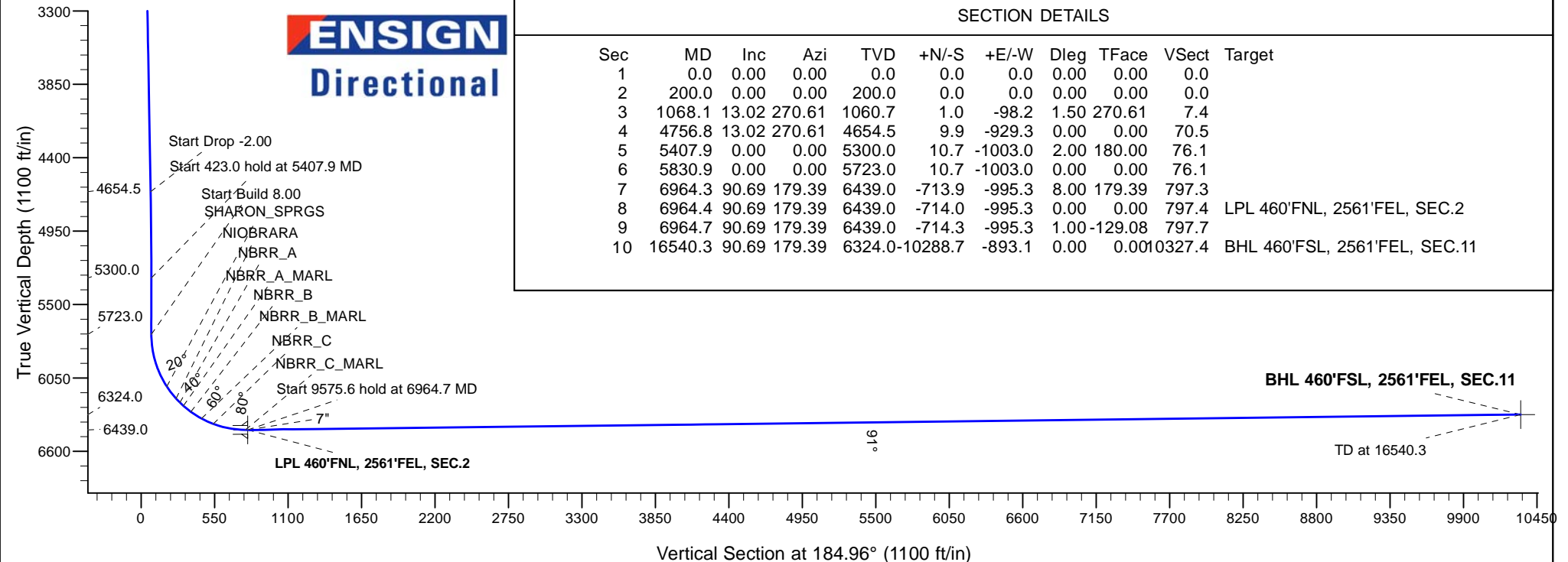
ANNOTATIONS

TVD	MD	Annotation
200.0	200.0	KOP - Start Build 1.50
4654.5	4756.8	Start Drop -2.00
5300.0	5407.9	Start 423.0 hold at 5407.9 MD
5723.0	5830.9	Start Build 8.00
6439.0	6964.7	Start 9575.6 hold at 6964.7 MD
6324.0	16540.3	TD at 16540.3



SECTION DETAILS

Sec	MD	Inc	Azi	TVD	+N/-S	+E/-W	Dleg	TFace	VSect	Target
1	0.0	0.00	0.00	0.0	0.0	0.0	0.00	0.00	0.0	
2	200.0	0.00	0.00	200.0	0.0	0.0	0.00	0.00	0.0	
3	1068.1	13.02	270.61	1060.7	1.0	-98.2	1.50	270.61	7.4	
4	4756.8	13.02	270.61	4654.5	9.9	-929.3	0.00	0.00	70.5	
5	5407.9	0.00	0.00	5300.0	10.7	-1003.0	2.00	180.00	76.1	
6	5830.9	0.00	0.00	5723.0	10.7	-1003.0	0.00	0.00	76.1	
7	6964.3	90.69	179.39	6439.0	-713.9	-995.3	8.00	179.39	797.3	
8	6964.4	90.69	179.39	6439.0	-714.0	-995.3	0.00	0.00	797.4	LPL 460'FNL, 2561'FEL, SEC.2
9	6964.7	90.69	179.39	6439.0	-714.3	-995.3	1.00	-129.08	797.7	
10	16540.3	90.69	179.39	6324.0	-10288.7	-893.1	0.00	0.00	10327.4	BHL 460'FSL, 2561'FEL, SEC.11





Caerus Oil and Gas LLC

SEC.35-T7N-R61W

Riggs OP 35-761 Pad Sec.35-T7N-R61W

Riggs 35-761-0561XCH

Wellbore #1

Plan: Plan #1 (9-29-16)

Standard Planning Report

04 October, 2016

Database:	US_EDM	Local Co-ordinate Reference:	Well Riggs 35-761-0561XCH
Company:	Caerus Oil and Gas LLC	TVD Reference:	WELL @ 4799.0ft (RKB - 30')
Project:	SEC.35-T7N-R61W	MD Reference:	WELL @ 4799.0ft (RKB - 30')
Site:	Riggs OP 35-761 Pad Sec.35-T7N-R61W	North Reference:	True
Well:	Riggs 35-761-0561XCH	Survey Calculation Method:	Minimum Curvature
Wellbore:	Wellbore #1		
Design:	Plan #1 (9-29-16)		

Project	SEC.35-T7N-R61W, Weld County, CO		
Map System:	US State Plane 1983	System Datum:	Mean Sea Level
Geo Datum:	North American Datum 1983		Using Well Reference Point
Map Zone:	Colorado Northern Zone		Using geodetic scale factor

Site		Riggs OP 35-761 Pad Sec.35-T7N-R61W			
Site Position:		Northing:	1,436,866.61 usft	Latitude:	40.525017
From:	Lat/Long	Easting:	3,369,023.84 usft	Longitude:	-104.172511
Position Uncertainty:	0.0 ft	Slot Radius:	13-3/16 "	Grid Convergence:	0.86

Well	Riggs 35-761-0561XCH					
Well Position	+N/-S	0.0 ft	Northing:	1,436,866.59 usft	Latitude:	40.525017
	+E/-W	0.0 ft	Easting:	3,369,023.84 usft	Longitude:	-104.172511
Position Uncertainty		0.0 ft	Wellhead Elevation:	0.0 ft	Ground Level:	4,769.0 ft

Wellbore	Wellbore #1				
Magnetics	Model Name	Sample Date	Declination (°)	Dip Angle (°)	Field Strength (nT)
	IGRF2010	10/4/2016	7.83	67.06	52,697

Design	Plan #1 (9-29-16)			
Audit Notes:				
Version:	Phase:	PROTOTYPE	Tie On Depth:	0.0
Vertical Section:	Depth From (TVD)	+N/-S	+E/-W	Direction
	(ft)	(ft)	(ft)	(°)
	0.0	0.0	0.0	184.96

Plan Sections										
Measured Depth (ft)	Inclination (°)	Azimuth (°)	Vertical Depth (ft)	+N/-S (ft)	+E/-W (ft)	Dogleg Rate (°/100usft)	Build Rate (°/100usft)	Turn Rate (°/100usft)	TFO (°)	Target
0.0	0.00	0.00	0.0	0.0	0.0	0.00	0.00	0.00	0.00	
200.0	0.00	0.00	200.0	0.0	0.0	0.00	0.00	0.00	0.00	
1,068.1	13.02	270.61	1,060.7	1.0	-98.2	1.50	1.50	0.00	270.61	
4,756.8	13.02	270.61	4,654.5	9.9	-929.3	0.00	0.00	0.00	0.00	
5,407.9	0.00	0.00	5,300.0	10.7	-1,003.0	2.00	-2.00	0.00	180.00	
5,830.9	0.00	0.00	5,723.0	10.7	-1,003.0	0.00	0.00	0.00	0.00	
6,964.3	90.69	179.39	6,439.0	-713.9	-995.3	8.00	8.00	0.00	179.39	
6,964.4	90.69	179.39	6,439.0	-714.0	-995.3	0.00	0.00	0.00	0.00	LPL 460'FNL, 2561'FI
6,964.7	90.69	179.39	6,439.0	-714.3	-995.3	1.00	-0.63	-0.78	-129.08	
16,540.3	90.69	179.39	6,324.0	-10,288.7	-893.1	0.00	0.00	0.00	0.00	BHL 460'FSL, 2561'FI

Database:	US_EDM	Local Co-ordinate Reference:	Well Riggs 35-761-0561XCH
Company:	Caerus Oil and Gas LLC	TVD Reference:	WELL @ 4799.0ft (RKB - 30')
Project:	SEC.35-T7N-R61W	MD Reference:	WELL @ 4799.0ft (RKB - 30')
Site:	Riggs OP 35-761 Pad Sec.35-T7N-R61W	North Reference:	True
Well:	Riggs 35-761-0561XCH	Survey Calculation Method:	Minimum Curvature
Wellbore:	Wellbore #1		
Design:	Plan #1 (9-29-16)		

Planned Survey									
Measured Depth (ft)	Inclination (°)	Azimuth (°)	Vertical Depth (ft)	+N/-S (ft)	+E/-W (ft)	Vertical Section (ft)	Dogleg Rate (°/100usft)	Build Rate (°/100usft)	Turn Rate (°/100usft)
0.0	0.00	0.00	0.0	0.0	0.0	0.0	0.00	0.00	0.00
100.0	0.00	0.00	100.0	0.0	0.0	0.0	0.00	0.00	0.00
200.0	0.00	0.00	200.0	0.0	0.0	0.0	0.00	0.00	0.00
KOP - Start Build 1.50									
300.0	1.50	270.61	300.0	0.0	-1.3	0.1	1.50	1.50	0.00
400.0	3.00	270.61	399.9	0.1	-5.2	0.4	1.50	1.50	0.00
500.0	4.50	270.61	499.7	0.1	-11.8	0.9	1.50	1.50	0.00
600.0	6.00	270.61	599.3	0.2	-20.9	1.6	1.50	1.50	0.00
700.0	7.50	270.61	698.6	0.3	-32.7	2.5	1.50	1.50	0.00
800.0	9.00	270.61	797.5	0.5	-47.0	3.6	1.50	1.50	0.00
900.0	10.50	270.61	896.1	0.7	-64.0	4.9	1.50	1.50	0.00
1,000.0	12.00	270.61	994.2	0.9	-83.5	6.3	1.50	1.50	0.00
1,068.1	13.02	270.61	1,060.7	1.0	-98.2	7.4	1.50	1.50	0.00
1,100.0	13.02	270.61	1,091.7	1.1	-105.4	8.0	0.00	0.00	0.00
1,200.0	13.02	270.61	1,189.2	1.4	-127.9	9.7	0.00	0.00	0.00
1,300.0	13.02	270.61	1,286.6	1.6	-150.5	11.4	0.00	0.00	0.00
1,400.0	13.02	270.61	1,384.0	1.8	-173.0	13.1	0.00	0.00	0.00
1,500.0	13.02	270.61	1,481.4	2.1	-195.5	14.8	0.00	0.00	0.00
1,600.0	13.02	270.61	1,578.9	2.3	-218.1	16.5	0.00	0.00	0.00
1,700.0	13.02	270.61	1,676.3	2.6	-240.6	18.2	0.00	0.00	0.00
1,800.0	13.02	270.61	1,773.7	2.8	-263.1	20.0	0.00	0.00	0.00
1,900.0	13.02	270.61	1,871.2	3.0	-285.7	21.7	0.00	0.00	0.00
2,000.0	13.02	270.61	1,968.6	3.3	-308.2	23.4	0.00	0.00	0.00
2,100.0	13.02	270.61	2,066.0	3.5	-330.7	25.1	0.00	0.00	0.00
2,200.0	13.02	270.61	2,163.4	3.8	-353.2	26.8	0.00	0.00	0.00
2,300.0	13.02	270.61	2,260.9	4.0	-375.8	28.5	0.00	0.00	0.00
2,400.0	13.02	270.61	2,358.3	4.2	-398.3	30.2	0.00	0.00	0.00
2,500.0	13.02	270.61	2,455.7	4.5	-420.8	31.9	0.00	0.00	0.00
2,600.0	13.02	270.61	2,553.2	4.7	-443.4	33.6	0.00	0.00	0.00
2,700.0	13.02	270.61	2,650.6	5.0	-465.9	35.3	0.00	0.00	0.00
2,800.0	13.02	270.61	2,748.0	5.2	-488.4	37.0	0.00	0.00	0.00
2,900.0	13.02	270.61	2,845.4	5.5	-511.0	38.8	0.00	0.00	0.00
3,000.0	13.02	270.61	2,942.9	5.7	-533.5	40.5	0.00	0.00	0.00
3,100.0	13.02	270.61	3,040.3	5.9	-556.0	42.2	0.00	0.00	0.00
3,200.0	13.02	270.61	3,137.7	6.2	-578.6	43.9	0.00	0.00	0.00
3,252.6	13.02	270.61	3,189.0	6.3	-590.4	44.8	0.00	0.00	0.00
RICHARD_SD									
3,300.0	13.02	270.61	3,235.1	6.4	-601.1	45.6	0.00	0.00	0.00
3,400.0	13.02	270.61	3,332.6	6.7	-623.6	47.3	0.00	0.00	0.00
3,500.0	13.02	270.61	3,430.0	6.9	-646.2	49.0	0.00	0.00	0.00
3,600.0	13.02	270.61	3,527.4	7.1	-668.7	50.7	0.00	0.00	0.00
3,700.0	13.02	270.61	3,624.9	7.4	-691.2	52.4	0.00	0.00	0.00
3,800.0	13.02	270.61	3,722.3	7.6	-713.8	54.1	0.00	0.00	0.00
3,900.0	13.02	270.61	3,819.7	7.9	-736.3	55.8	0.00	0.00	0.00
4,000.0	13.02	270.61	3,917.1	8.1	-758.8	57.6	0.00	0.00	0.00
4,100.0	13.02	270.61	4,014.6	8.3	-781.3	59.3	0.00	0.00	0.00
4,200.0	13.02	270.61	4,112.0	8.6	-803.9	61.0	0.00	0.00	0.00
4,300.0	13.02	270.61	4,209.4	8.8	-826.4	62.7	0.00	0.00	0.00
4,400.0	13.02	270.61	4,306.9	9.1	-848.9	64.4	0.00	0.00	0.00
4,500.0	13.02	270.61	4,404.3	9.3	-871.5	66.1	0.00	0.00	0.00
4,600.0	13.02	270.61	4,501.7	9.5	-894.0	67.8	0.00	0.00	0.00
4,700.0	13.02	270.61	4,599.1	9.8	-916.5	69.5	0.00	0.00	0.00
4,756.8	13.02	270.61	4,654.5	9.9	-929.3	70.5	0.00	0.00	0.00

Database:	US_EDM	Local Co-ordinate Reference:	Well Riggs 35-761-0561XCH
Company:	Caerus Oil and Gas LLC	TVD Reference:	WELL @ 4799.0ft (RKB - 30')
Project:	SEC.35-T7N-R61W	MD Reference:	WELL @ 4799.0ft (RKB - 30')
Site:	Riggs OP 35-761 Pad Sec.35-T7N-R61W	North Reference:	True
Well:	Riggs 35-761-0561XCH	Survey Calculation Method:	Minimum Curvature
Wellbore:	Wellbore #1		
Design:	Plan #1 (9-29-16)		

Planned Survey									
Measured Depth (ft)	Inclination (°)	Azimuth (°)	Vertical Depth (ft)	+N/-S (ft)	+E/-W (ft)	Vertical Section (ft)	Dogleg Rate (°/100usft)	Build Rate (°/100usft)	Turn Rate (°/100usft)
Start Drop -2.00									
4,800.0	12.16	270.61	4,696.6	10.0	-938.7	71.2	2.00	-2.00	0.00
4,900.0	10.16	270.61	4,794.8	10.2	-958.1	72.7	2.00	-2.00	0.00
5,000.0	8.16	270.61	4,893.5	10.4	-974.0	73.9	2.00	-2.00	0.00
5,100.0	6.16	270.61	4,992.7	10.5	-986.5	74.8	2.00	-2.00	0.00
5,200.0	4.16	270.61	5,092.3	10.6	-995.5	75.5	2.00	-2.00	0.00
5,300.0	2.16	270.61	5,192.1	10.7	-1,001.0	75.9	2.00	-2.00	0.00
5,400.0	0.16	270.61	5,292.1	10.7	-1,003.0	76.1	2.00	-2.00	0.00
5,407.9	0.00	270.61	5,300.0	10.7	-1,003.0	76.1	2.00	-2.00	0.00
Start 423.0 hold at 5407.9 MD									
5,500.0	0.00	0.00	5,392.1	10.7	-1,003.0	76.1	0.00	0.00	0.00
5,600.0	0.00	0.00	5,492.1	10.7	-1,003.0	76.1	0.00	0.00	0.00
5,700.0	0.00	0.00	5,592.1	10.7	-1,003.0	76.1	0.00	0.00	0.00
5,800.0	0.00	0.00	5,692.1	10.7	-1,003.0	76.1	0.00	0.00	0.00
5,830.9	0.00	0.00	5,723.0	10.7	-1,003.0	76.1	0.00	0.00	0.00
Start Build 8.00									
5,900.0	5.53	179.39	5,792.0	7.4	-1,003.0	79.4	8.00	8.00	0.00
6,000.0	13.53	179.39	5,890.5	-9.2	-1,002.8	95.9	8.00	8.00	0.00
6,100.0	21.53	179.39	5,985.8	-39.3	-1,002.5	125.8	8.00	8.00	0.00
6,200.0	29.53	179.39	6,076.0	-82.3	-1,002.0	168.7	8.00	8.00	0.00
6,244.5	33.10	179.39	6,114.0	-105.5	-1,001.8	191.7	8.00	8.00	0.00
SHARON_SPRGS									
6,300.0	37.54	179.39	6,159.3	-137.5	-1,001.4	223.6	8.00	8.00	0.00
6,358.3	42.20	179.39	6,204.0	-174.9	-1,001.0	260.8	8.00	8.00	0.00
NIOBRARA									
6,399.9	45.53	179.39	6,234.0	-203.7	-1,000.7	289.5	8.00	8.00	0.00
NBRR_A									
6,400.0	45.54	179.39	6,234.0	-203.8	-1,000.7	289.6	8.00	8.00	0.00
6,435.1	48.34	179.39	6,258.0	-229.4	-1,000.4	315.1	8.00	8.00	0.00
NBRR_A_MARL									
6,500.0	53.54	179.39	6,298.9	-279.8	-999.9	365.2	8.00	8.00	0.00
6,508.7	54.23	179.39	6,304.0	-286.8	-999.8	372.2	8.00	8.00	0.00
NBRR_B									
6,600.0	61.54	179.39	6,352.5	-364.1	-999.0	449.1	8.00	8.00	0.00
6,603.1	61.79	179.39	6,354.0	-366.9	-999.0	451.9	8.00	8.00	0.00
NBRR_B_MARL									
6,700.0	69.54	179.39	6,393.9	-455.0	-998.0	539.6	8.00	8.00	0.00
6,700.3	69.57	179.39	6,394.0	-455.3	-998.0	539.9	8.00	8.00	0.00
NBRR_C									
6,800.0	77.54	179.39	6,422.2	-550.9	-997.0	635.0	8.00	8.00	0.00
6,900.0	85.54	179.39	6,436.9	-649.7	-996.0	733.4	8.00	8.00	0.00
6,947.0	89.30	179.39	6,439.0	-696.6	-995.5	780.1	8.00	8.00	0.00
NBRR_C_MARL									
6,964.3	90.69	179.39	6,439.0	-713.9	-995.3	797.3	8.00	8.00	0.00
6,964.4	90.69	179.39	6,439.0	-714.0	-995.3	797.4	0.00	0.00	0.00
6,964.7	90.69	179.39	6,439.0	-714.3	-995.3	797.7	0.99	-0.63	-0.77
Start 9575.6 hold at 6964.7 MD									
7,000.0	90.69	179.39	6,438.6	-749.6	-994.9	832.9	0.00	0.00	0.00
7,100.0	90.69	179.39	6,437.4	-849.6	-993.8	932.4	0.00	0.00	0.00
7,200.0	90.69	179.39	6,436.2	-949.6	-992.8	1,031.9	0.00	0.00	0.00
7,300.0	90.69	179.39	6,435.0	-1,049.6	-991.7	1,131.4	0.00	0.00	0.00
7,400.0	90.69	179.39	6,433.8	-1,149.6	-990.6	1,230.9	0.00	0.00	0.00

Database:	US_EDM	Local Co-ordinate Reference:	Well Riggs 35-761-0561XCH
Company:	Caerus Oil and Gas LLC	TVD Reference:	WELL @ 4799.0ft (RKB - 30')
Project:	SEC.35-T7N-R61W	MD Reference:	WELL @ 4799.0ft (RKB - 30')
Site:	Riggs OP 35-761 Pad Sec.35-T7N-R61W	North Reference:	True
Well:	Riggs 35-761-0561XCH	Survey Calculation Method:	Minimum Curvature
Wellbore:	Wellbore #1		
Design:	Plan #1 (9-29-16)		

Planned Survey									
Measured Depth (ft)	Inclination (°)	Azimuth (°)	Vertical Depth (ft)	+N/-S (ft)	+E/-W (ft)	Vertical Section (ft)	Dogleg Rate (°/100usft)	Build Rate (°/100usft)	Turn Rate (°/100usft)
7,500.0	90.69	179.39	6,432.6	-1,249.6	-989.6	1,330.5	0.00	0.00	0.00
7,600.0	90.69	179.39	6,431.4	-1,349.6	-988.5	1,430.0	0.00	0.00	0.00
7,700.0	90.69	179.39	6,430.2	-1,449.5	-987.4	1,529.5	0.00	0.00	0.00
7,800.0	90.69	179.39	6,429.0	-1,549.5	-986.4	1,629.0	0.00	0.00	0.00
7,900.0	90.69	179.39	6,427.8	-1,649.5	-985.3	1,728.5	0.00	0.00	0.00
8,000.0	90.69	179.39	6,426.6	-1,749.5	-984.2	1,828.1	0.00	0.00	0.00
8,100.0	90.69	179.39	6,425.4	-1,849.5	-983.2	1,927.6	0.00	0.00	0.00
8,200.0	90.69	179.39	6,424.2	-1,949.5	-982.1	2,027.1	0.00	0.00	0.00
8,300.0	90.69	179.39	6,423.0	-2,049.5	-981.0	2,126.6	0.00	0.00	0.00
8,400.0	90.69	179.39	6,421.8	-2,149.4	-980.0	2,226.1	0.00	0.00	0.00
8,500.0	90.69	179.39	6,420.6	-2,249.4	-978.9	2,325.7	0.00	0.00	0.00
8,600.0	90.69	179.39	6,419.4	-2,349.4	-977.8	2,425.2	0.00	0.00	0.00
8,700.0	90.69	179.39	6,418.2	-2,449.4	-976.8	2,524.7	0.00	0.00	0.00
8,800.0	90.69	179.39	6,417.0	-2,549.4	-975.7	2,624.2	0.00	0.00	0.00
8,900.0	90.69	179.39	6,415.8	-2,649.4	-974.6	2,723.7	0.00	0.00	0.00
9,000.0	90.69	179.39	6,414.6	-2,749.4	-973.6	2,823.3	0.00	0.00	0.00
9,100.0	90.69	179.39	6,413.4	-2,849.4	-972.5	2,922.8	0.00	0.00	0.00
9,200.0	90.69	179.39	6,412.2	-2,949.3	-971.4	3,022.3	0.00	0.00	0.00
9,300.0	90.69	179.39	6,411.0	-3,049.3	-970.4	3,121.8	0.00	0.00	0.00
9,400.0	90.69	179.39	6,409.7	-3,149.3	-969.3	3,221.3	0.00	0.00	0.00
9,500.0	90.69	179.39	6,408.5	-3,249.3	-968.2	3,320.9	0.00	0.00	0.00
9,600.0	90.69	179.39	6,407.3	-3,349.3	-967.2	3,420.4	0.00	0.00	0.00
9,700.0	90.69	179.39	6,406.1	-3,449.3	-966.1	3,519.9	0.00	0.00	0.00
9,800.0	90.69	179.39	6,404.9	-3,549.3	-965.0	3,619.4	0.00	0.00	0.00
9,900.0	90.69	179.39	6,403.7	-3,649.3	-963.9	3,718.9	0.00	0.00	0.00
10,000.0	90.69	179.39	6,402.5	-3,749.2	-962.9	3,818.5	0.00	0.00	0.00
10,100.0	90.69	179.39	6,401.3	-3,849.2	-961.8	3,918.0	0.00	0.00	0.00
10,200.0	90.69	179.39	6,400.1	-3,949.2	-960.7	4,017.5	0.00	0.00	0.00
10,300.0	90.69	179.39	6,398.9	-4,049.2	-959.7	4,117.0	0.00	0.00	0.00
10,400.0	90.69	179.39	6,397.7	-4,149.2	-958.6	4,216.5	0.00	0.00	0.00
10,500.0	90.69	179.39	6,396.5	-4,249.2	-957.5	4,316.1	0.00	0.00	0.00
10,600.0	90.69	179.39	6,395.3	-4,349.2	-956.5	4,415.6	0.00	0.00	0.00
10,700.0	90.69	179.39	6,394.1	-4,449.2	-955.4	4,515.1	0.00	0.00	0.00
10,800.0	90.69	179.39	6,392.9	-4,549.1	-954.3	4,614.6	0.00	0.00	0.00
10,900.0	90.69	179.39	6,391.7	-4,649.1	-953.3	4,714.1	0.00	0.00	0.00
11,000.0	90.69	179.39	6,390.5	-4,749.1	-952.2	4,813.7	0.00	0.00	0.00
11,100.0	90.69	179.39	6,389.3	-4,849.1	-951.1	4,913.2	0.00	0.00	0.00
11,200.0	90.69	179.39	6,388.1	-4,949.1	-950.1	5,012.7	0.00	0.00	0.00
11,300.0	90.69	179.39	6,386.9	-5,049.1	-949.0	5,112.2	0.00	0.00	0.00
11,400.0	90.69	179.39	6,385.7	-5,149.1	-947.9	5,211.7	0.00	0.00	0.00
11,500.0	90.69	179.39	6,384.5	-5,249.0	-946.9	5,311.3	0.00	0.00	0.00
11,600.0	90.69	179.39	6,383.3	-5,349.0	-945.8	5,410.8	0.00	0.00	0.00
11,700.0	90.69	179.39	6,382.1	-5,449.0	-944.7	5,510.3	0.00	0.00	0.00
11,800.0	90.69	179.39	6,380.9	-5,549.0	-943.7	5,609.8	0.00	0.00	0.00
11,900.0	90.69	179.39	6,379.7	-5,649.0	-942.6	5,709.3	0.00	0.00	0.00
12,000.0	90.69	179.39	6,378.5	-5,749.0	-941.5	5,808.9	0.00	0.00	0.00
12,100.0	90.69	179.39	6,377.3	-5,849.0	-940.5	5,908.4	0.00	0.00	0.00
12,200.0	90.69	179.39	6,376.1	-5,949.0	-939.4	6,007.9	0.00	0.00	0.00
12,300.0	90.69	179.39	6,374.9	-6,048.9	-938.3	6,107.4	0.00	0.00	0.00
12,400.0	90.69	179.39	6,373.7	-6,148.9	-937.3	6,206.9	0.00	0.00	0.00
12,500.0	90.69	179.39	6,372.5	-6,248.9	-936.2	6,306.5	0.00	0.00	0.00
12,600.0	90.69	179.39	6,371.3	-6,348.9	-935.1	6,406.0	0.00	0.00	0.00
12,700.0	90.69	179.39	6,370.1	-6,448.9	-934.1	6,505.5	0.00	0.00	0.00
12,800.0	90.69	179.39	6,368.9	-6,548.9	-933.0	6,605.0	0.00	0.00	0.00

Database:	US_EDM	Local Co-ordinate Reference:	Well Riggs 35-761-0561XCH
Company:	Caerus Oil and Gas LLC	TVD Reference:	WELL @ 4799.0ft (RKB - 30')
Project:	SEC.35-T7N-R61W	MD Reference:	WELL @ 4799.0ft (RKB - 30')
Site:	Riggs OP 35-761 Pad Sec.35-T7N-R61W	North Reference:	True
Well:	Riggs 35-761-0561XCH	Survey Calculation Method:	Minimum Curvature
Wellbore:	Wellbore #1		
Design:	Plan #1 (9-29-16)		

Planned Survey									
Measured Depth (ft)	Inclination (°)	Azimuth (°)	Vertical Depth (ft)	+N/-S (ft)	+E/-W (ft)	Vertical Section (ft)	Dogleg Rate (°/100usft)	Build Rate (°/100usft)	Turn Rate (°/100usft)
12,900.0	90.69	179.39	6,367.7	-6,648.9	-931.9	6,704.5	0.00	0.00	0.00
13,000.0	90.69	179.39	6,366.5	-6,748.9	-930.8	6,804.1	0.00	0.00	0.00
13,100.0	90.69	179.39	6,365.3	-6,848.8	-929.8	6,903.6	0.00	0.00	0.00
13,200.0	90.69	179.39	6,364.1	-6,948.8	-928.7	7,003.1	0.00	0.00	0.00
13,300.0	90.69	179.39	6,362.9	-7,048.8	-927.6	7,102.6	0.00	0.00	0.00
13,400.0	90.69	179.39	6,361.7	-7,148.8	-926.6	7,202.1	0.00	0.00	0.00
13,500.0	90.69	179.39	6,360.5	-7,248.8	-925.5	7,301.7	0.00	0.00	0.00
13,600.0	90.69	179.39	6,359.3	-7,348.8	-924.4	7,401.2	0.00	0.00	0.00
13,700.0	90.69	179.39	6,358.1	-7,448.8	-923.4	7,500.7	0.00	0.00	0.00
13,800.0	90.69	179.39	6,356.9	-7,548.8	-922.3	7,600.2	0.00	0.00	0.00
13,900.0	90.69	179.39	6,355.7	-7,648.7	-921.2	7,699.8	0.00	0.00	0.00
14,000.0	90.69	179.39	6,354.5	-7,748.7	-920.2	7,799.3	0.00	0.00	0.00
14,100.0	90.69	179.39	6,353.3	-7,848.7	-919.1	7,898.8	0.00	0.00	0.00
14,200.0	90.69	179.39	6,352.1	-7,948.7	-918.0	7,998.3	0.00	0.00	0.00
14,300.0	90.69	179.39	6,350.9	-8,048.7	-917.0	8,097.8	0.00	0.00	0.00
14,400.0	90.69	179.39	6,349.7	-8,148.7	-915.9	8,197.4	0.00	0.00	0.00
14,500.0	90.69	179.39	6,348.5	-8,248.7	-914.8	8,296.9	0.00	0.00	0.00
14,600.0	90.69	179.39	6,347.3	-8,348.6	-913.8	8,396.4	0.00	0.00	0.00
14,700.0	90.69	179.39	6,346.1	-8,448.6	-912.7	8,495.9	0.00	0.00	0.00
14,800.0	90.69	179.39	6,344.9	-8,548.6	-911.6	8,595.4	0.00	0.00	0.00
14,900.0	90.69	179.39	6,343.7	-8,648.6	-910.6	8,695.0	0.00	0.00	0.00
15,000.0	90.69	179.39	6,342.5	-8,748.6	-909.5	8,794.5	0.00	0.00	0.00
15,100.0	90.69	179.39	6,341.3	-8,848.6	-908.4	8,894.0	0.00	0.00	0.00
15,200.0	90.69	179.39	6,340.1	-8,948.6	-907.4	8,993.5	0.00	0.00	0.00
15,300.0	90.69	179.39	6,338.9	-9,048.6	-906.3	9,093.0	0.00	0.00	0.00
15,400.0	90.69	179.39	6,337.7	-9,148.5	-905.2	9,192.6	0.00	0.00	0.00
15,500.0	90.69	179.39	6,336.5	-9,248.5	-904.2	9,292.1	0.00	0.00	0.00
15,600.0	90.69	179.39	6,335.3	-9,348.5	-903.1	9,391.6	0.00	0.00	0.00
15,700.0	90.69	179.39	6,334.1	-9,448.5	-902.0	9,491.1	0.00	0.00	0.00
15,800.0	90.69	179.39	6,332.9	-9,548.5	-901.0	9,590.6	0.00	0.00	0.00
15,900.0	90.69	179.39	6,331.7	-9,648.5	-899.9	9,690.2	0.00	0.00	0.00
16,000.0	90.69	179.39	6,330.5	-9,748.5	-898.8	9,789.7	0.00	0.00	0.00
16,100.0	90.69	179.39	6,329.3	-9,848.5	-897.8	9,889.2	0.00	0.00	0.00
16,200.0	90.69	179.39	6,328.1	-9,948.4	-896.7	9,988.7	0.00	0.00	0.00
16,300.0	90.69	179.39	6,326.9	-10,048.4	-895.6	10,088.2	0.00	0.00	0.00
16,400.0	90.69	179.39	6,325.7	-10,148.4	-894.5	10,187.8	0.00	0.00	0.00
16,500.0	90.69	179.39	6,324.5	-10,248.4	-893.5	10,287.3	0.00	0.00	0.00
16,540.3	90.69	179.39	6,324.0	-10,288.7	-893.1	10,327.4	0.00	0.00	0.00
TD at 16540.3									

Database:	US_EDM	Local Co-ordinate Reference:	Well Riggs 35-761-0561XCH
Company:	Caerus Oil and Gas LLC	TVD Reference:	WELL @ 4799.0ft (RKB - 30')
Project:	SEC.35-T7N-R61W	MD Reference:	WELL @ 4799.0ft (RKB - 30')
Site:	Riggs OP 35-761 Pad Sec.35-T7N-R61W	North Reference:	True
Well:	Riggs 35-761-0561XCH	Survey Calculation Method:	Minimum Curvature
Wellbore:	Wellbore #1		
Design:	Plan #1 (9-29-16)		

Design Targets									
Target Name - hit/miss target - Shape	Dip Angle (°)	Dip Dir. (°)	TVD (ft)	+N/-S (ft)	+E/-W (ft)	Northing (usft)	Easting (usft)	Latitude	Longitude
SHL 250'FSL, 1558'FEL - plan hits target center - Point	0.00	0.00	1.0	0.0	0.0	1,436,866.61	3,369,023.84	40.525017	-104.172511
BHL 460'FSL, 2561'FEL - plan hits target center - Point	0.00	0.00	6,324.0	-10,288.7	-893.1	1,426,566.03	3,368,284.93	40.496776	-104.175722
LPL 460'FNL, 2561'FEL, - plan hits target center - Point	0.00	0.00	6,439.0	-714.0	-995.3	1,436,137.77	3,368,039.38	40.523057	-104.176091

Casing Points				
Measured Depth (ft)	Vertical Depth (ft)	Name	Casing Diameter (")	Hole Diameter (")
6,964.4	6,439.0	7"	7	8-3/4

Formations					
Measured Depth (ft)	Vertical Depth (ft)	Name	Lithology	Dip (°)	Dip Direction (°)
3,252.6	3,189.0	RICHARD_SD		0.00	
6,244.5	6,114.0	SHARON_SPRGS		0.00	
6,358.3	6,204.0	NIOBRARA		0.00	
6,399.9	6,234.0	NBRR_A		0.00	
6,435.1	6,258.0	NBRR_A_MARL		0.00	
6,508.7	6,304.0	NBRR_B		0.00	
6,603.1	6,354.0	NBRR_B_MARL		0.00	
6,700.3	6,394.0	NBRR_C		0.00	
6,947.0	6,439.0	NBRR_C_MARL		0.00	

Plan Annotations				
Measured Depth (ft)	Vertical Depth (ft)	Local Coordinates		Comment
		+N/-S (ft)	+E/-W (ft)	
200.0	200.0	0.0	0.0	KOP - Start Build 1.50
4,756.8	4,654.5	9.9	-929.3	Start Drop -2.00
5,407.9	5,300.0	10.7	-1,003.0	Start 423.0 hold at 5407.9 MD
5,830.9	5,723.0	10.7	-1,003.0	Start Build 8.00
6,964.7	6,439.0	-714.3	-995.3	Start 9575.6 hold at 6964.7 MD
16,540.3	6,324.0	-10,288.7	-893.1	TD at 16540.3