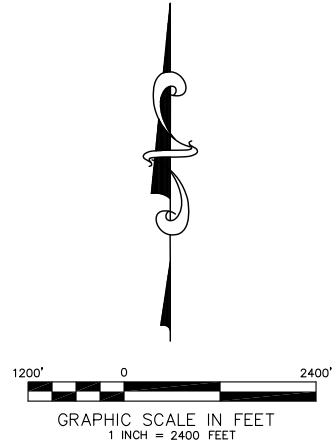
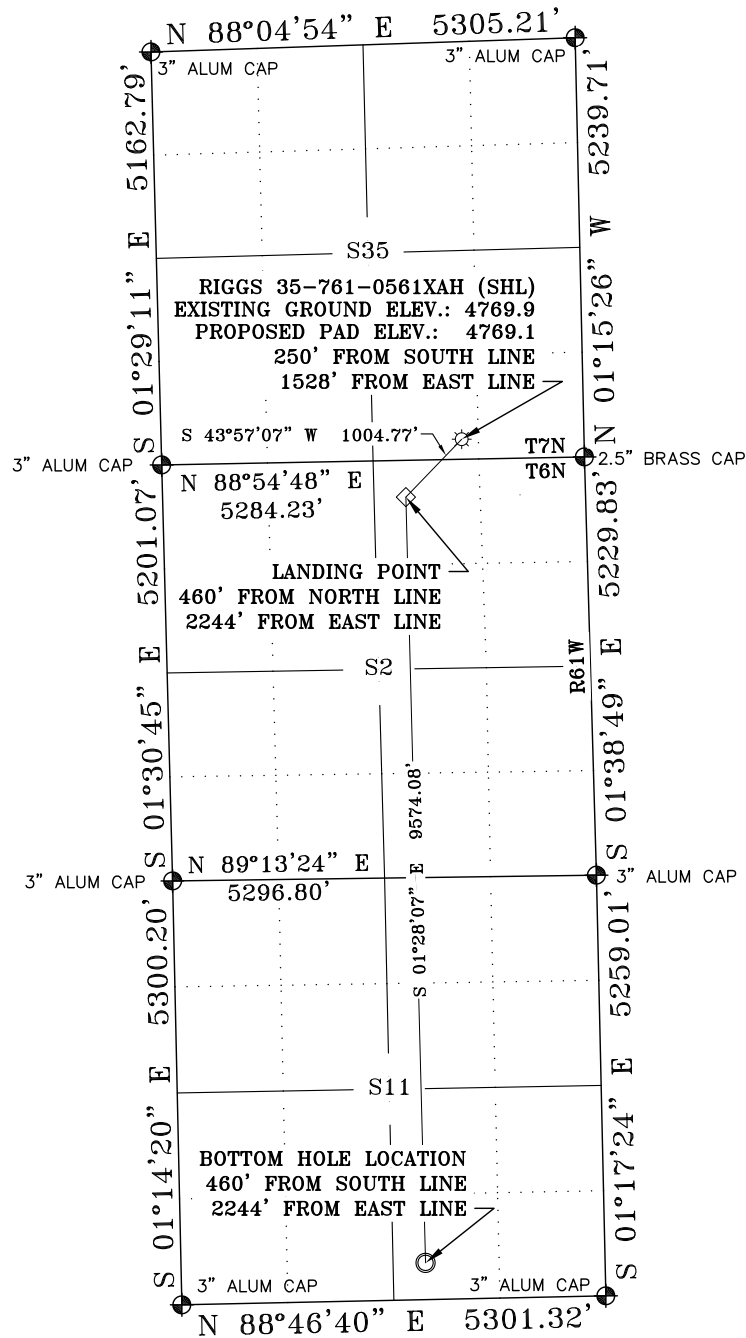


# RIGGS 35-761-0561XAH LOCATION PLAT



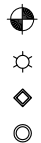
## LEGEND:

FIELD LOCATED SECTION MONUMENTS AS DESCRIBED

SURFACE HOLE LOCATION (SHL)

LANDING POINT (LPL)

BOTTOM HOLE LOCATION (BHL)



## NOTES:

- 1) ELEVATIONS ARE BASED ON NGS STATION "PARACHINI" WITH A PUBLISHED ELEVATION OF 1434.1 METERS.
- 2) LATITUDES AND LONGITUDES ARE BASED ON NAD 83 COLORADO NORTH ZONE.
- 3) WELL MEASURED 90° FROM SECTION LINES.
- 4) THE BASIS OF BEARING IS FROM GPS OBSERVATION RESULTING IN THE BEARING BETWEEN THE FOUND MONUMENTS AS SHOWN.
- 5) ELEVATION MASK SET TO 15°
- 6) PDOP SET TO 6
- 7) DATE OF FIELD SURVEY: 06/08/16

## SURVEYORS STATEMENT:

I, JAMES A. KALMON, A REGISTERED LAND SURVEYOR IN THE STATE OF COLORADO DO HEREBY CERTIFY THAT THE SURVEY SHOWN HEREON WAS PREPARED BY ME OR UNDER MY DIRECT SUPERVISION AND THAT THIS PLAT IS A TRUE REPRESENTATION THEREOF. I FURTHER CERTIFY THAT THIS LOCATION HAS BEEN STAKED ON THE GROUND AS SHOWN ON THIS PLAT.



JAMES A. KALMON, COLORADO REGISTRATION NO. 38050  
FOR AND ON BEHALF OF ECLIPSE SURVEYING, INC.

## CLOSEST WELL IN SAME FORMATION

WELL NAME	DIRECTION	DISTANCE	
RIGGS 35-761-0561XBH	S 88°55' W	158'	PROPOSED
FRANK TRUST 14-36H	N 75°03' E	2821'	EXISTING

	WELL NAME	NORTHING	EASTING	LAT NAD 83	LONG NAD 83
SHL	RIGGS 35-761-0561XAH	1436867.2	3369053.8	N 40.525017	W 104.172403
LPL	LANDING POINT	1436143.8	3368356.4	N 40.523061	W 104.174950
BHL	BOTTOM HOLE LOCATION	1426572.9	3368601.8	N 40.496782	W 104.174583



**ECLIPSE**  
Surveying, Inc.  
1874 Six Lazy K Rd., New Castle, CO 81647  
(970) 876-5939

REV. DATE: 08/02/16  
SCALE: 1" = 2400'  
DATE: 07/29/16  
SHEET: 1 OF 1  
PROJECT: S35-761  
DFT: JAK

**CAERUS**  
OIL AND GAS LLC  
1001 17th Street, Suite 1600, Denver, CO 80202

RIGGS 35-761-0561XAH  
LOCATION PLAT