



Kerr-McGee Oil & Gas Onshore LP

A subsidiary of Anadarko Petroleum Corporation

1099 18th Street
Denver, CO 80202
720-929-6000

November 4, 2016

Matt Lepore
Director, Colorado Oil and Gas Conservation Commission
Department of Natural Resources
The Chancery Building
1120 Lincoln Street, Suite 801
Denver, CO 80203

Re: **30 Day Certification Letter - 318A.e**
GABEL 2C-5HZ (Doc No. 401137996)
Township 1 North, Range 66 West
Section 8: NWNE
Unit Acreage: 240 acres
Unit Spacing: 01N66W Sec 8: NWNE
01N66W Sec 5: W2E2
02N66W Sec 32: SWSE
Weld County, Colorado

Dear Director Lepore:

Kerr McGee Oil and Gas Onshore LP ("KMG") hereby certifies that KMG owns one hundred percent (100%) of the leasehold interest in the mineral rights in the proposed spacing unit. KMG hereby respectfully requests approval of this boundary well.

If you have any questions or issues regarding this permit, please contact our office.

Sincerely,

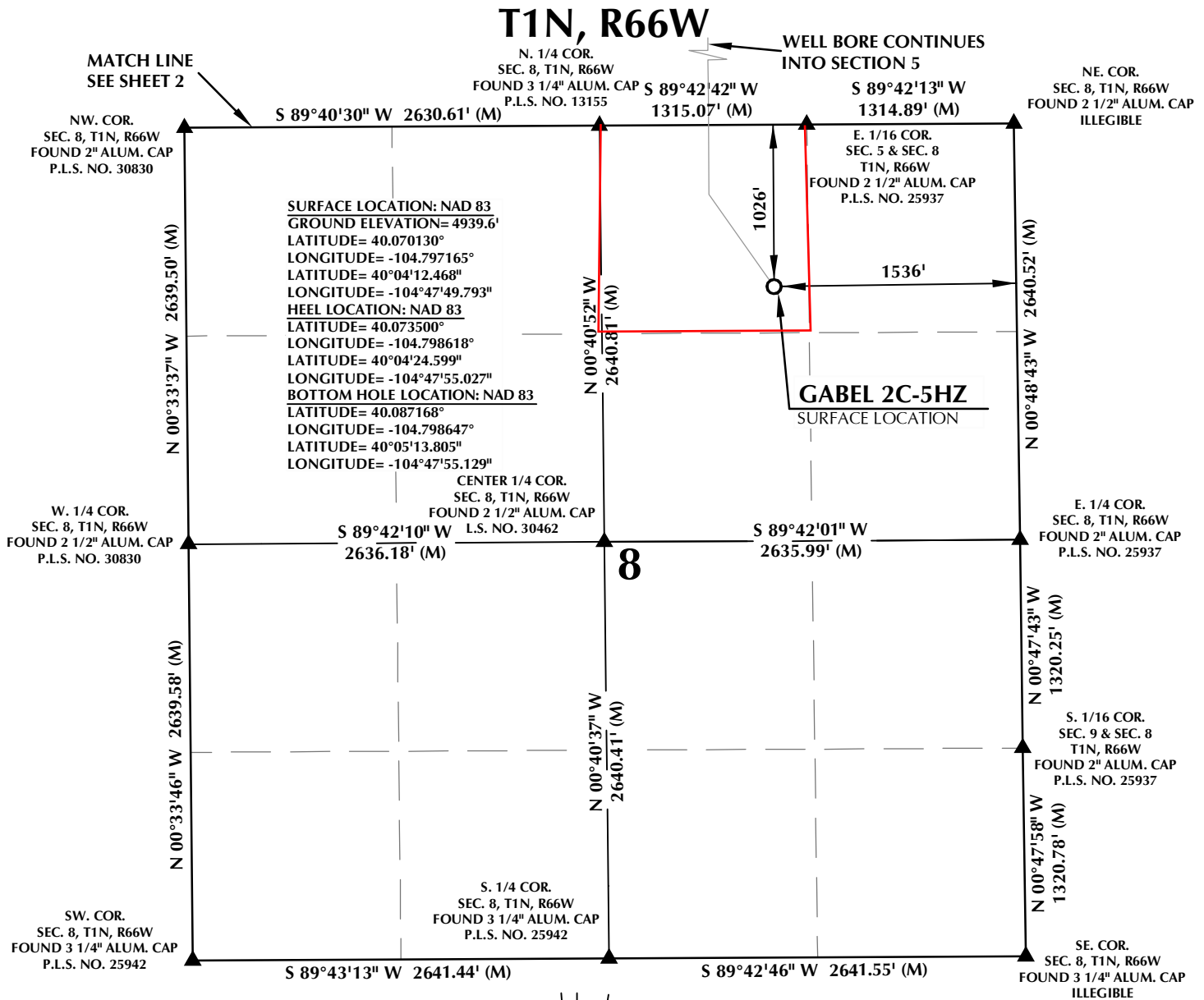
Kerr-McGee Oil and Gas Onshore LP

A handwritten signature in black ink, reading "Shayelyn Marshall".

Shayelyn Marshall
Regulatory Analyst I

Enclosure

PROPOSED SPACING UNIT

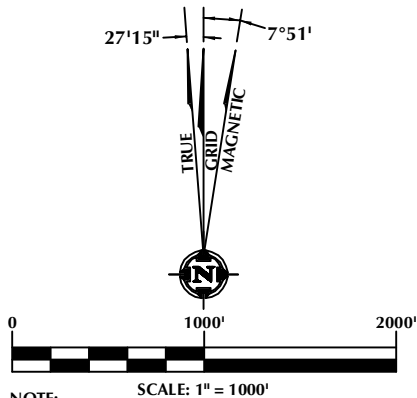


CERTIFICATE OF SURVEYOR:

THIS IS TO CERTIFY THAT THE ABOVE PLAT WAS PREPARED FROM FIELD NOTES OF ACTUAL SURVEY MADE BY ME OR UNDER MY SUPERVISION AND THAT THE SAME ARE TRUE AND CORRECT TO THE BEST OF MY KNOWLEDGE AND BELIEF. THIS CERTIFICATE DOES NOT REPRESENT A LAND SURVEY PLAT OR IMPROVEMENT SURVEY PLAT AS DEFINED BY C.R.S. 38-51-402 AND CANNOT BE RELIED UPON TO DETERMINE OWNERSHIP.



RANDALL K. FRENCH
PROFESSIONAL LAND SURVEYOR
COLORADO REGISTRATION NUMBER 38512

NOTICE: ACCORDING TO COLORADO STATE LAW YOU MUST COMMENCE ANY LEGAL ACTION BASED UPON ANY DEFECT IN THIS SURVEY WITHIN THREE YEARS AFTER YOU FIRST DISCOVER SUCH DEFECT. IN NO EVENT MAY ANY ACTION BASED UPON ANY DEFECT IN THIS SURVEY BE COMMENCED MORE THAN TEN YEARS FROM THE DATE ON THE CERTIFICATION SHOWN HEREON.



NOTE: SCALE: 1" = 1000'
MAGNETIC NORTH IS CURRENT AS OF 6/21/2016.
MAGNETIC NORTH CHANGES WEST 0°06' PER YEAR.

NOTES:

1.  INDICATES SECTION CORNER
2.  INDICATES CALCULATED CORNER
3. ELEVATION BASED ON NAVD88 (GEOID09)
4. BASIS OF BEARING DERIVED FROM COLORADO COORDINATE SYSTEM OF 1983 NORTH ZONE.
5. ALL MEASURED DISTANCES ARE GRID.
COMBINED SCALE FACTOR: .99972975 CALCULATED FROM THE S. 1/4 CORNER OF SECTION 8, T1N, R66W
6. OPERATOR: ROB WILSON / PDOP = 1.5
7. SEE ADDENDUM TO WELL LOCATION CERTIFICATE FOR EXISTING IMPROVEMENTS WITHIN 500' OF THE WELL PAD.
8. WELL FOOTAGES ARE MEASURED AT RIGHT ANGLES TO THE SECTION LINES.
9. THE BOTTOM OF HOLE BEARS N00°32'42"W, 4979' FROM THE HEEL LOCATION.

WELL PAD - GABEL 37N-8HZ

GABEL 2C-5HZ
WELL LOCATION CERTIFICATE
1026' FNL & 1536' FEL NWNE (SURFACE)
LOCATED IN SECTION 8
200' FSL & 1938' FEL SWSE (HEEL)
68' FNL & 1975' FEL LOT 2 (NWNE) (BOTTOM)
LOCATED IN SECTION 5
T1N, R66W, 6TH P.M.
WELD COUNTY, COLORADO

**Kerr-McGee Oil &
Gas Onshore L.P.**
1099 18th Street
Denver, Colorado 80202



CONSULTING, LLC

SHERIDAN OFFICE
1095 Saberton Avenue
Sheridan, Wyoming 82801
Phone 307-674-0609

LOVELAND OFFICE
1635 Foxtrail Drive, Suite 204
Loveland, Colorado 80538
Phone 970-776-4331

DRAFTED BY: LMO	CHECKED BY: RKF	SHEET NO: 1 1 OF 2
DATE DRAFTED: 7/26/16	DATE SURVEYED: 6/20/16	
REVISED:	FILE NAME: 14-133	

PROPOSED SPACING UNIT

T1N, R66W

NW. COR.
SEC. 5, T1N, R66W
FOUND 3 1/4" ALUM. CAP
P.L.S. NO. 17669

N. 1/4 COR.
SEC. 5, T1N, R66W
FOUND 3 1/4" ALUM. CAP
L.S. NO. 14823

NE. COR.
SEC. 5, T1N, R66W
FOUND 3 1/4" ALUM. CAP
P.L.S. NO. 13155

S 89°35'28" W 2656.43' (M)

S 89°32'16" W 2643.78' (M)

N 00°37'50" W 2592.56' (M)

N 00°16'00" W 2594.81' (M)

N 00°07'04" W 2600.30' (M)

SURFACE LOCATION: NAD 83
GROUND ELEVATION= 4939.6'
LATITUDE= 40.070130°
LONGITUDE= -104.797165°
LATITUDE= 40°04'12.468"
LONGITUDE= -104°47'49.793"
HEEL LOCATION: NAD 83
LATITUDE= 40.073500°
LONGITUDE= -104.798618°
LATITUDE= 40°04'24.599"
LONGITUDE= -104°47'55.027"
BOTTOM HOLE LOCATION: NAD 83
LATITUDE= 40.087168°
LONGITUDE= -104.798647°
LATITUDE= 40°05'13.805"
LONGITUDE= -104°47'55.129"

CENTER 1/4 COR.
SEC. 5, T1N, R66W
FOUND 3 1/4" ALUM. CAP
P.L.S. NO. 13155

W. 1/4 COR.
SEC. 5, T1N, R66W
FOUND 2" ALUM. CAP
P.L.S. NO. 13155

S 89°38'25" W 2639.96' (M)

S 89°39'22" W 2637.01' (M)

E. 1/4 COR.
SEC. 5, T1N, R66W
FOUND 3 1/4" ALUM. CAP
P.L.S. NO. 13155

N 00°28'28" W 2648.69' (M)

N 00°16'23" W 1325.14' (M)

N 00°07'11" W 1326.43' (M)

CS. 1/16 COR.
SEC. 5, T1N, R66W
FOUND 2" ALUM. CAP
P.L.S. NO. 25937

N 00°32'42" W 4979' GRID
N 00°05'27" W TRUE
N 08°23'42" W MAGNETIC

S. 1/16 COR.
SEC. 5 & SEC. 4
T1N, R66W
FOUND 2" ALUM. CAP
P.L.S. NO. 25937

SW. COR.
SEC. 5, T1N, R66W
FOUND 2" ALUM. CAP
P.L.S. NO. 30830

S. 1/4 COR.
SEC. 5, T1N, R66W
FOUND 3 1/4" ALUM. CAP
P.L.S. NO. 13155

E. 1/16 COR.
SEC. 5 & SEC. 8
T1N, R66W
FOUND 2 1/2" ALUM. CAP
P.L.S. NO. 25937

S 89°40'30" W 2630.61' (M)

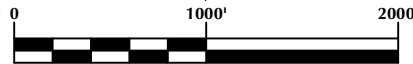
S 89°42'42" W 1315.07' (M)

S 89°42'13" W 1314.89' (M)

SE. COR.
SEC. 5, T1N, R66W
FOUND 2 1/2" ALUM. CAP
ILLEGIBLE

MATCH LINE
SEE SHEET 1

27'15" 7°51'



SCALE: 1" = 1000'

NOTE:
MAGNETIC NORTH IS CURRENT AS OF 6/21/2016.
MAGNETIC NORTH CHANGES WEST 0°06' PER YEAR.

CERTIFICATE OF SURVEYOR:

THIS IS TO CERTIFY THAT THE ABOVE PLAT WAS PREPARED FROM FIELD NOTES OF ACTUAL SURVEY MADE BY ME OR UNDER MY SUPERVISION AND THAT THE SAME ARE TRUE AND CORRECT TO THE BEST OF MY KNOWLEDGE AND BELIEF. THIS CERTIFICATE DOES NOT REPRESENT A LAND SURVEY PLAT OR IMPROVEMENT SURVEY PLAT AS DEFINED BY C.R.S. 38-51-302 AND CANNOT BE RELIED UPON TO DETERMINE OWNERSHIP.

Randall K. French
PROFESSIONAL LAND SURVEYOR
COLORADO REGISTRATION NUMBER 38512
7/26/16

NOTICE:
ACCORDING TO COLORADO STATE LAW YOU MUST COMMENCE ANY LEGAL ACTION BASED UPON ANY DEFECT IN THIS SURVEY WITHIN THREE YEARS AFTER YOU FIRST DISCOVER SUCH DEFECT. IN NO EVENT MAY ANY ACTION BASED UPON ANY DEFECT IN THIS SURVEY BE COMMENCED MORE THAN TEN YEARS FROM THE DATE ON THE CERTIFICATION SHOWN HEREON.

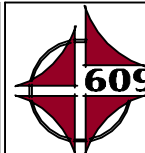
NOTES:

- ▲ INDICATES SECTION CORNER
- INDICATES CALCULATED CORNER
- ELEVATION BASED ON NAVD88 (GEOID09)
- BASIS OF BEARING DERIVED FROM COLORADO COORDINATE SYSTEM OF 1983 NORTH ZONE.
- ALL MEASURED DISTANCES ARE GRID.
COMBINED SCALE FACTOR: .99972975 CALCULATED FROM THE S. 1/4 CORNER OF SECTION 8, T1N, R66W
OPERATOR: ROB WILSON / PDOP = 1.5
- SEE ADDENDUM TO WELL LOCATION CERTIFICATE FOR EXISTING IMPROVEMENTS WITHIN 500' OF THE WELL PAD.
- WELL FOOTAGES ARE MEASURED AT RIGHT ANGLES TO THE SECTION LINES.
- THE BOTTOM OF HOLE BEARS N00°32'42"W, 4979' FROM THE HEEL LOCATION.
- NO. 1 & NO. 2 AS SHOWN HEREON ARE GOVERNMENT LOTS 1 & 2 PER THE ORIGINAL GLO SURVEY

WELL PAD - GABEL 37N-8HZ

GABEL 2C-5HZ
WELL LOCATION CERTIFICATE
1026' FNL & 1536' FEL NWNE (SURFACE)
LOCATED IN SECTION 8
200' FSL & 1938' FEL SWSE (HEEL)
68' FNL & 1975' FEL LOT 2 (NWNE) (BOTTOM)
LOCATED IN SECTION 5
T1N, R66W, 6TH P.M.
WELD COUNTY, COLORADO

**Kerr-McGee Oil &
Gas Onshore L.P.**
1099 18th Street
Denver, Colorado 80202



CONSULTING, LLC

SHERIDAN OFFICE
1095 Saberton Avenue
Sheridan, Wyoming 82801
Phone 307-674-0609

LOVELAND OFFICE
1635 Foxtrail Drive, Suite 204
Loveland, Colorado 80538
Phone 970-776-4331

DRAFTED BY:	LMO	CHECKED BY:	RKF	SHEET NO:
DATE DRAFTED:	7/26/16	DATE SURVEYED:	6/20/16	2
REVISED:		FILE NAME:	14-133	2 OF 2