

K:\WADARKO\2014\133 GABEL SEC. 8, T1N, R66W\PLAT5 GABEL 37N-8HZ.dwg, 7/26/2016 7:46:27 AM, shawn

T1N, R66W

5

N 00°16'16" W  
1325.14' (M)

CS. 1/16 COR.  
SEC. 5, T1N, R66W  
FOUND 2" ALUM. CAP  
P.L.S. NO. 25937

E. 1/16 COR.  
SEC. 5 & SEC. 8  
T1N, R66W  
FOUND 2 1/2" ALUM. CAP  
P.L.S. NO. 25937

S. 1/16 COR.  
SEC. 5 & SEC. 4  
T1N, R66W  
FOUND 2" ALUM. CAP  
P.L.S. NO. 25937

N 00°07'12" W  
1326.22' (M)

NE. COR.  
SEC. 8, T1N, R66W  
FOUND 2 1/2" ALUM. CAP  
ILLEGIBLE

NW. COR.  
SEC. 8, T1N, R66W  
FOUND 2" ALUM. CAP  
P.L.S. NO. 30830

S 89°40'30" W 2630.61' (M)

N. 1/4 COR.  
SEC. 8, T1N, R66W  
FOUND 3 1/4" ALUM. CAP  
P.L.S. NO. 13155

SURFACE LOCATION: NAD 83  
GROUND ELEVATION= 4940.1'  
LATITUDE= 40.070033°  
LONGITUDE= -104.797066°  
LATITUDE= 40°04'12.117"  
LONGITUDE= -104°47'49.437"  
HEEL LOCATION: NAD 83  
LATITUDE= 40.072405°  
LONGITUDE= -104.800169°  
LATITUDE= 40°04'20.658"  
LONGITUDE= -104°48'00.609"  
BOTTOM HOLE LOCATION: NAD 83  
LATITUDE= 40.058567°  
LONGITUDE= -104.800200°  
LATITUDE= 40°03'30.841"  
LONGITUDE= -104°48'00.720"

CENTER 1/4 COR.  
SEC. 8, T1N, R66W  
FOUND 2 1/2" ALUM. CAP  
P.L.S. NO. 30462

S 89°42'10" W 2636.18' (M)

N 00°40'52" W 2640.81' (M)  
S 00°21'16" E 5041' GRID  
S 00°05'59" W TRUE  
S 08°12'16" E MAGNETIC

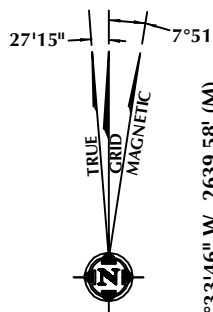
HEEL LOCATION

GABEL 36N-8HZ  
SURFACE LOCATION

S 89°42'01" W 2635.99' (M)

E. 1/4 COR.  
SEC. 8, T1N, R66W  
FOUND 2" ALUM. CAP  
P.L.S. NO. 25937

W. 1/4 COR.  
SEC. 8, T1N, R66W  
FOUND 2 1/2" ALUM. CAP  
P.L.S. NO. 30830



N 00°33'46" W 2639.58' (M)

SW. COR.  
SEC. 8, T1N, R66W  
FOUND 3 1/4" ALUM. CAP  
P.L.S. NO. 25942

S 89°43'13" W 2641.44' (M)

S. 1/4 COR.  
SEC. 8, T1N, R66W  
FOUND 3 1/4" ALUM. CAP  
P.L.S. NO. 25942

N 00°40'37" W 2640.41' (M)

2600'

1280'

1091'

2412'

N 00°47'43" W 1320.25' (M)

S. 1/16 COR.  
SEC. 9 & SEC. 8  
T1N, R66W  
FOUND 2" ALUM. CAP  
P.L.S. NO. 25937

N 00°47'58" W 1320.78' (M)

SE. COR.  
SEC. 8, T1N, R66W  
FOUND 3 1/4" ALUM. CAP  
ILLEGIBLE

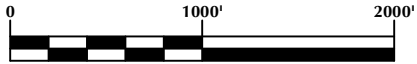
### CERTIFICATE OF SURVEYOR:

THIS IS TO CERTIFY THAT THE ABOVE PLAT WAS PREPARED FROM FIELD NOTES OF ACTUAL SURVEY MADE BY ME OR UNDER MY SUPERVISION AND THAT THE SAME ARE TRUE AND CORRECT TO THE BEST OF MY KNOWLEDGE AND BELIEF. THIS CERTIFICATE DOES NOT REPRESENT A LAND SURVEY PLAT OR IMPROVEMENT SURVEY PLAT AS DEFINED BY C.R.S. 38-51-302 AND CANNOT BE RELIED UPON TO DETERMINE OWNERSHIP.

*Randall K. French*  
PROFESSIONAL LAND SURVEYOR  
COLORADO REGISTRATION NUMBER 38512  
7/26/16

NOTE:  
ACCORDING TO COLORADO STATE LAW YOU MUST COMMENCE ANY LEGAL ACTION BASED UPON ANY DEFECT IN THIS SURVEY WITHIN THREE YEARS AFTER YOU FIRST DISCOVER SUCH DEFECT. IN NO EVENT MAY ANY ACTION BASED UPON ANY DEFECT IN THIS SURVEY BE COMMENCED MORE THAN TEN YEARS FROM THE DATE ON THE CERTIFICATION SHOWN HEREON.

BOTTOM OF HOLE:  
40' FSL & 2412' FEL



NOTE:  
MAGNETIC NORTH IS CURRENT AS OF 6/21/2016.  
MAGNETIC NORTH CHANGES WEST 0°06' PER YEAR.

### NOTES:

- ▲ INDICATES SECTION CORNER
- INDICATES CALCULATED CORNER
- ELEVATION BASED ON NAVD88 (GEOID09)
- BASIS OF BEARING DERIVED FROM COLORADO COORDINATE SYSTEM OF 1983 NORTH ZONE.
- ALL MEASURED DISTANCES ARE GRID.  
COMBINED SCALE FACTOR: .99972975 CALCULATED FROM THE S. 1/4 CORNER OF SECTION 8, T1N, R66W
- OPERATOR: ROB WILSON / PDOP = 1.3
- SEE ADDENDUM TO WELL LOCATION CERTIFICATE FOR EXISTING IMPROVEMENTS WITHIN 500' OF THE WELL PAD.
- WELL FOOTAGES ARE MEASURED AT RIGHT ANGLES TO THE SECTION LINES.
- THE BOTTOM OF HOLE BEARS S00°21'16"E, 5041' FROM THE HEEL LOCATION.

### WELL PAD - GABEL 37N-8HZ

#### GABEL 36N-8HZ

WELL LOCATION CERTIFICATE  
1062' FNL & 1509' FEL NWNE (SURFACE)  
200' FNL & 2372' FEL NWNE (HEEL)  
40' FSL & 2412' FEL SWSE (BOTTOM)  
LOCATED IN SECTION 8  
T1N, R66W, 6TH P.M.  
WELD COUNTY, COLORADO

Kerr-McGee Oil &  
Gas Onshore L.P.  
1099 18th Street  
Denver, Colorado 80202



### CONSULTING, LLC

SHERIDAN OFFICE  
1095 Saberton Avenue  
Sheridan, Wyoming 82801  
Phone 307-674-0609

LOVELAND OFFICE  
1635 Foxtrail Drive, Suite 204  
Loveland, Colorado 80538  
Phone 970-776-4331

DRAFTED BY:	LMO	CHECKED BY:	RKF
DATE DRAFTED:	7/26/16	DATE SURVEYED:	6/20/16
REVISED:		FILE NAME:	14-133