

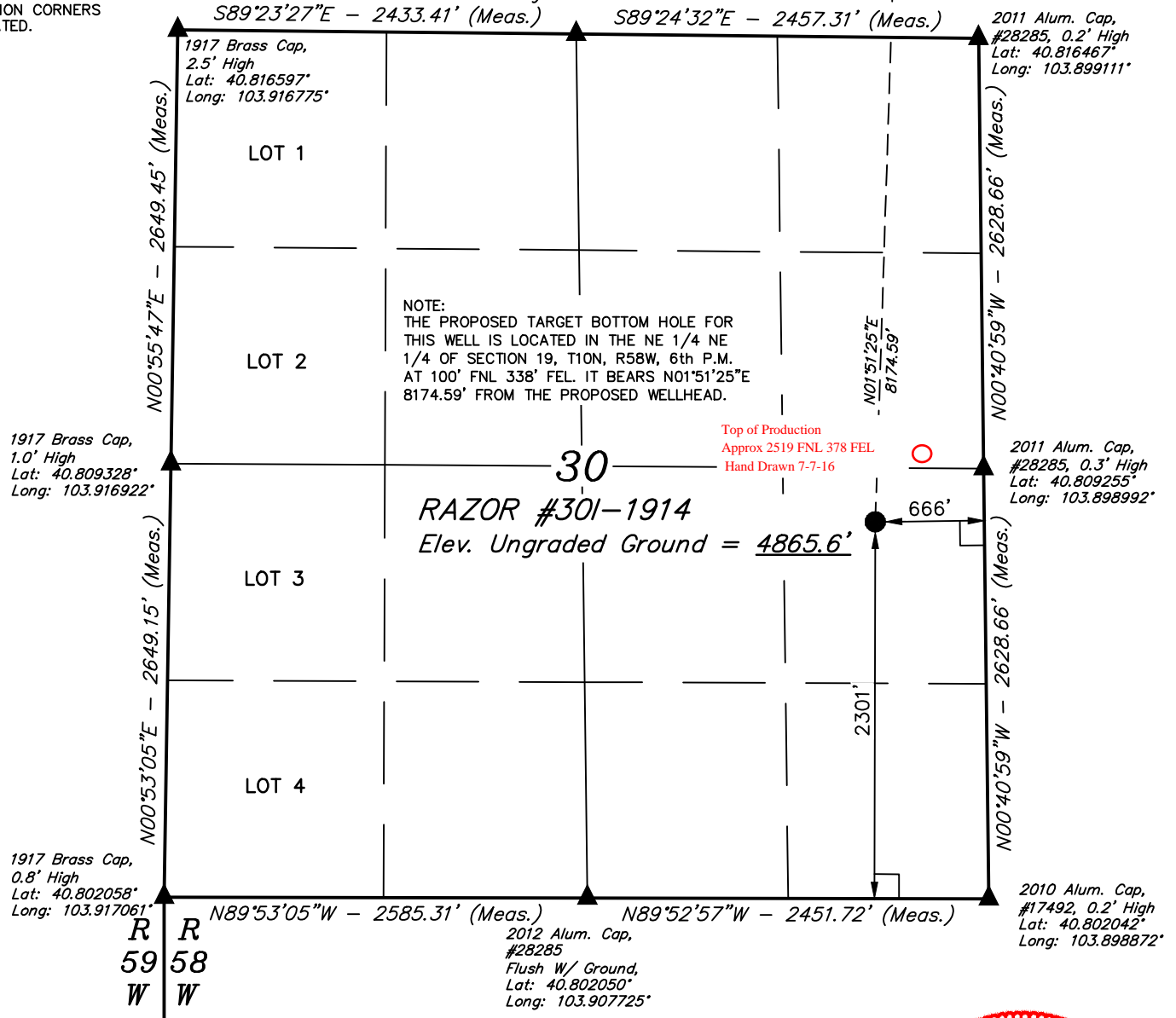
LEGEND:

- = 90° SYMBOL
 ● = PROPOSED WELLHEAD.
 ○ = TARGET BOTTOM HOLE.
 ▲ = SECTION CORNERS LOCATED.

T10N, R58W, 6th P.M.

2012 Alum. Cap,
 #28285, 0.3' High
 Lat: 40.816533°
 Long: 103.907986°

Target
Bottom Hole



PDOP = 1.3

NAD 83 (SURFACE LOCATION)

LATITUDE = 40°48'30.09" (40.808358)
 LONGITUDE = 104°54'04.98" (103.901383)

NAD 27 (SURFACE LOCATION)

LATITUDE = 40°48'30.14" (40.808372)
 LONGITUDE = 103°54'03.17" (103.900881)



BASIS OF BEARINGS

BASIS OF BEARINGS IS A G.P.S. OBSERVATION

BASIS OF ELEVATION

SPOT ELEVATION LOCATED AT THE NORTHEAST CORNER OF SECTION 15, T9N, R58W, 6th P.M. TAKEN FROM THE GATEHOOK SPRING, QUADRANGLE, COLORADO, WELD COUNTY, 7.5 MINUTE QUAD (TOPOGRAPHIC MAP) PUBLISHED BY THE UNITED STATES DEPARTMENT OF THE INTERIOR, GEOLOGICAL SURVEY. SAID ELEVATION IS MARKED AS BEING 4679 FEET.

CERTIFICATE
 THIS IS TO CERTIFY THAT THE ABOVE PLAT WAS PREPARED FROM FIELD NOTES OF ACTUAL SURVEYS MADE BY ME OR UNDER MY SUPERVISION, AND THAT THE SAME ARE TRUE AND CORRECT TO THE BEST OF MY KNOWLEDGE AND BELIEF.

REGISTERED LAND SURVEYOR
 REGISTRATION NO. 28285
 STATE OF COLORADO

11-05-15

WHITING OIL & GAS CORP.

RAZOR #30I-1914 (SURFACE LOCATION)
NE 1/4 SE 1/4, SECTION 30, T10N, R58W, 6th P.M.
WELD COUNTY, COLORADO

SURVEYED BY: DARREN SHANKS, D.S.	DATE: 04-22-14
DRAWN BY: J.P.	SCALE: 1" = 1000'
DATE DRAWN: 04-29-14	REVISION: 11-05-15

WELL LOCATION PLAT



UELS, LLC
 Corporate Office * 85 South 200 East
 Vernal, UT 84078 * (435) 789-1017



LEGEND:

└─ = 90° SYMBOL

● = PROPOSED WELLHEAD.

○ = TARGET BOTTOM HOLE.

▲ = SECTION CORNERS LOCATED.

T10N, R58W, 6th P.M

2014 Alum. Cap
#28285 0.3' High
Lat: 40.831092°
Long: 103.907669°

N89°33'24"W
2337.25' (Meas.)

2011 Alum. Cap,
#17492
Lat: 40.831047°
Long: 103.899228°

N89°33'24"W - 2448.27' (Meas.)

1917 Brass Cap
Lat: 40.831139°
Long: 103.916514°

RAZOR #30I-1914
Target Bottom Hole

LOT 1

LOT 2

NOTE:
THE PROPOSED TARGET BOTTOM HOLE
BEARS N01°51'25"E 8174.59' FROM THE
PROPOSED WELLHEAD WHICH IS LOCATED IN
THE NE 1/4 SE 1/4 OF SECTION 30, T10N,
R58W, 6th P.M. AT 2301' FSL 666' FEL.

19

LOT 3

LOT 4

1917 Brass Cap,
0.9' High
Lat: 40.823869°
Long: 103.916653°

2012 Alum. Cap,
#28285
Flush W/Ground
Lat: 40.823758°
Long: 103.899169°

1917 Brass Cap,
2.5' High
Lat: 40.816597°
Long: 103.916775°

2011 Alum. Cap,
#28285, 0.2' High
Lat: 40.816467°
Long: 103.899111°

R
59
W

S89°23'27"E - 2433.41' (Meas.)

S89°24'32"E - 2457.31' (Meas.)

Surface
Location

CERTIFICATE

THIS IS TO CERTIFY THAT THE ABOVE PLAT WAS PREPARED FROM FIELD
NOTES OF ACTUAL SURVEYS MADE BY ME OR UNDER MY SUPERVISION
AND THAT THE SAME ARE TRUE AND CORRECT TO THE BEST OF MY
KNOWLEDGE AND BELIEF.

NAD 83 (TARGET BOTTOM HOLE)

LATITUDE = 40°49'50.81" (40.830781)
LONGITUDE = 103°54'01.60" (103.900444)

NAD 27 (TARGET BOTTOM HOLE)

LATITUDE = 40°49'50.86" (40.830794)
LONGITUDE = 103°53'59.79" (103.899942)



BASIS OF BEARINGS

BASIS OF BEARINGS IS A G.P.S. OBSERVATION

BASIS OF ELEVATION

SPOT ELEVATION LOCATED AT THE NORTHEAST CORNER OF SECTION 15, T9N, R58W,
6th P.M. TAKEN FROM THE GATEHOOK SPRING, QUADRANGLE, COLORADO, WELD
COUNTY, 7.5 MINUTE QUAD (TOPOGRAPHIC MAP) PUBLISHED BY THE UNITED STATES
DEPARTMENT OF THE INTERIOR, GEOLOGICAL SURVEY. SAID ELEVATION IS MARKED
AS BEING 4679 FEET.

WHITING OIL & GAS CORP.

RAZOR #30I-1914 (TARGET BOTTOM HOLE)
NE 1/4 NE 1/4, SECTION 19, T10N, R58W, 6th P.M.
WELD COUNTY, COLORADO

SURVEYED BY: DARREN SHANKS, D.S.	DATE: 04-22-14
DRAWN BY: J.P.	SCALE: 1" = 1000'
DATE DRAWN: 04-29-14	REVISION: 11-05-15

WELL LOCATION PLAT



UELS, LLC
Corporate Office * 85 South 200 East
Vernal, UT 84078 * (435) 789-1017

