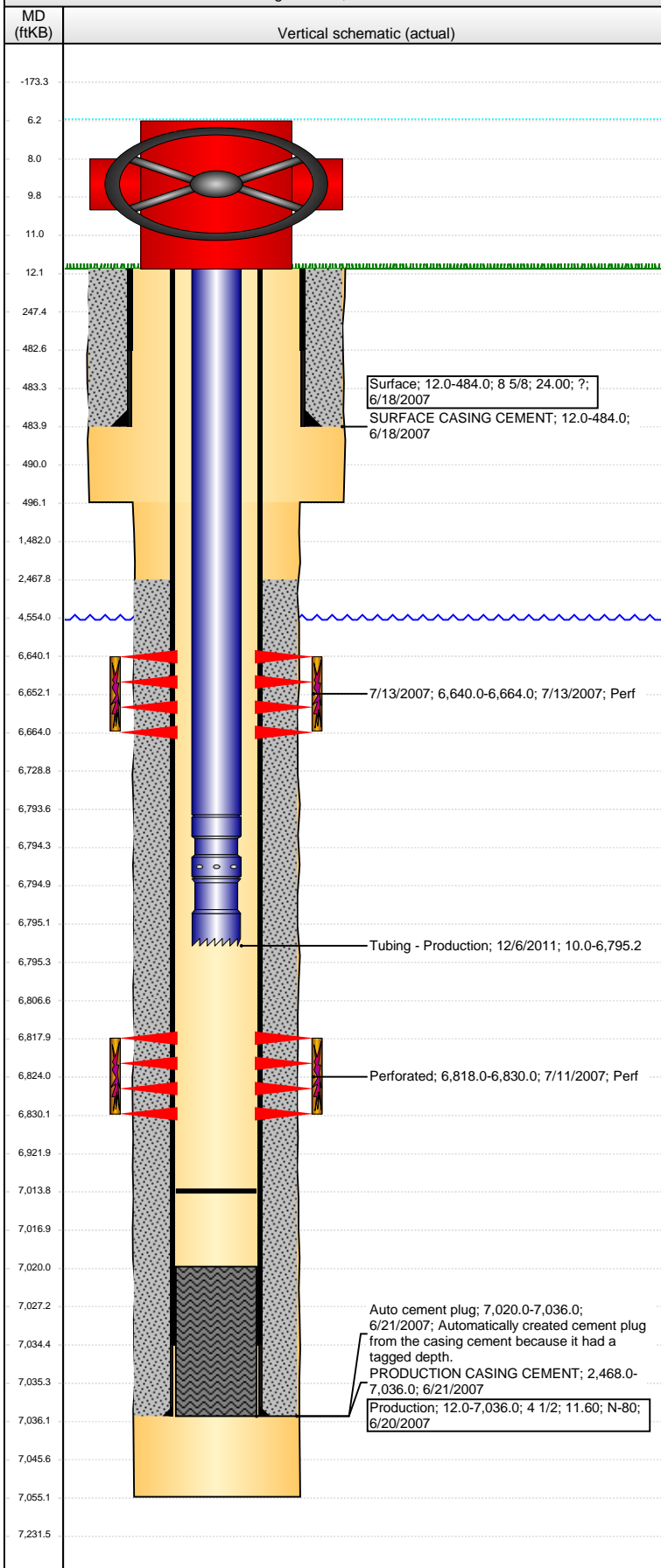


**Well Name: MCKENNEY 13-25**

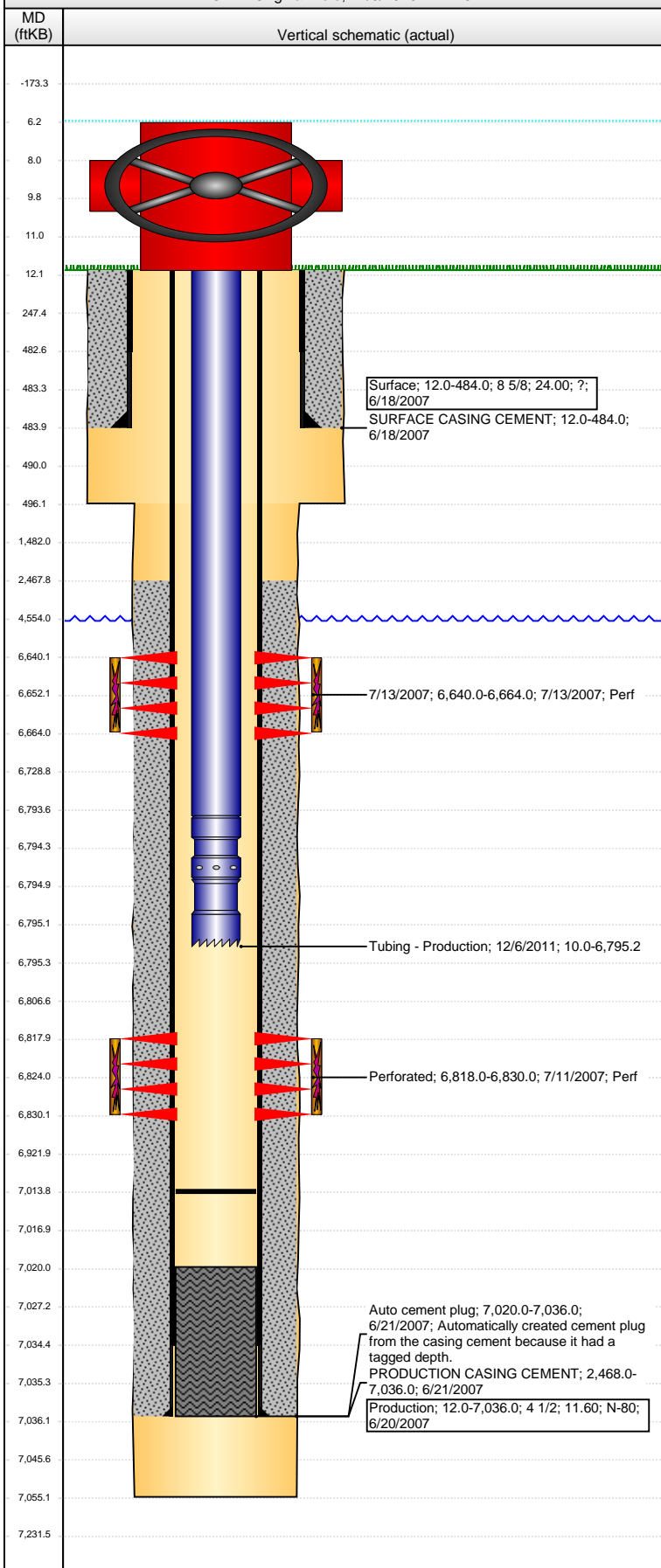
VERTICAL - Original Hole, 11/5/2016 11:27:02 AM



Well Header							
API 05-123-25291		Business Unit DJ BASIN		District 15		Well Config VERTICAL	
Original KB Elevation (ft) 4,676		KB - GL / MSL (ftKB) 12.00		Spud Date 6/16/2007		P & A Date	
Comment WELL FILE HAS LITTLE INFO. MOST INFO PULLED FROM STATE REPORTS							
Directions To Well WCRS 59 & 70, EAST 0.25 MILE, SOUTH DOWN LANE 0.2 MILE AND EAST 0.1 MILE ONTO.							
Congressional Location							
Quarter 3 NE	Quarter 4 NW	Section 13	Township 6	Twntshp N/S Dir N	Range 64	Range E/W Dir W	
Bottom Hole Location							
North-South Distance (ft)		From N or S Line		East-West Distance (ft)		From E or W Line	
Plug Back Total Depths							
Date	Depth (ftKB)	Method		Com			
6/20/2007	7,020.0	CASING TALLY		BAFFLE PLATE			
7/17/2007	6,994.0	CASED HOLE LOG		DEPTH LOGGER ON CBL			
11/17/2011	7,014.2	TUBING TALLY					
12/6/2011	7,013.8	TUBING TALLY		C/O & LAND TBG			
Wellbore Sections							
Section Des		Size (in)		Act Top, MD (ftKB)		Act Btm, MD (ftKB)	
SURFACE		12 1/4		12		496	
PRODUCTION		7 7/8		496		7,055	
Zone Statuses							
Zone Name	Status Date	Status	Fluid Type	Job	Prod Method		
CODELL	7/30/2007	PR	Water	DRILLING/CO...	Flowing		
CODELL	4/24/2010	PR					
CODELL	12/21/2011	PR		RE-FRAC, 11/1...			
NIOBRARA	7/30/2007	PR	Water	DRILLING/CO...	Flowing		
NIOBRARA	4/24/2010	PR					
NIOBRARA	3/22/2016	PR					
Casing Strings							
Surface, 484.0ftKB							
Casing Description	Run Date	OD (in)	Wt/Len (l...	Grade	Top, MD (ft...	MD (ftKB)	
Surface	6/18/2007	8 5/8	24.00	?	12.0	484.0	
Production, 7,036.0ftKB							
Casing Description	Run Date	OD (in)	Wt/Len (l...	Grade	Top, MD (ft...	MD (ftKB)	
Production	6/20/2007	4 1/2	11.60	N-80	12.0	7,036.0	
Cement							
Description				Top Depth (ftKB)		Bottom Depth (ftKB)	
SURFACE CASING CEMENT				12.0		484.0	
Description				Top Depth (ftKB)		Bottom Depth (ftKB)	
PRODUCTION CASING CEMENT				2,468.0		7,036.0	
Tubing Strings							
Tubing Description	Run Date	String...	ID (in)	Wt (lb/ft)	Grade	Len (ft)	Set De...
Tubing - Production	8/20/2007	2 3/8	1.995		?	6,783.00	
Tubing Description	Run Date	String...	ID (in)	Wt (lb/ft)	Grade	Len (ft)	Set De...
Tubing - Frac string	11/18/2011	2 7/8	2.441	6.50	N-80	6,734.62	
Tubing Description	Run Date	String...	ID (in)	Wt (lb/ft)	Grade	Len (ft)	Set De...
Tubing - Production	12/6/2011	2 3/8	1.995	4.70	J-55	6,785.21	
Tubing Components							
Item Des	OD (in)	Wt (lb/ft)	Grade	Jts	Len (ft)	Btm (ftKB)	Btm (TVD) (ftKB)
EUE 8rd Tubing	2 3/8	4.70	J-55	220	6,783.71	6,793.7	
Seating Nipple	2 3/8		N-80	1	1.10	6,794.8	
Notched collar	2 3/8	4.70	J-55	1	0.40	6,795.2	
Perforation Data							
Zone	Bnch/St g	Entered Shot Total	Top (ftKB)		Btm (ftKB)		Date
NIOBRARA, Original Hole	B	96	6,640.00		6,664.00		7/13/2007
CODELL, Original Hole		48	6,818.00		6,830.00		7/11/2007

**Well Name: MCKENNEY 13-25**

VERTICAL - Original Hole, 11/5/2016 11:27:04 AM



## Stimulations & Treatments

Date	Zone	Primary Job Type
7/13/2007	CODELL, Original Hole	DRILLING/COMPLETION - ORIGINAL
Technical Result	Tech Result Details	Tech Result Note

Comment

Date	Zone	Primary Job Type
7/13/2007	NIOBRARA, Original Hole	DRILLING/COMPLETION - ORIGINAL
Technical Result	Tech Result Details	Tech Result Note

Comment

Date	Zone	Primary Job Type
11/30/2011	CODELL, Original Hole	RE-FRAC
Technical Result	Tech Result Details	Tech Result Note

Success  
According to Plan  
Comment  
(COD REFRAC): JOB WENT AS PLANNED 5 MINUTE SIP 3260

## Other In Hole

Run Date	Des	OD (in)	Top (ftKB)	Btm (ftKB)

## Logs

Date	Type	Top, MD (ftKB)	Btm, MD (ftKB)
6/20/2007	COMPENSATED DENSITY	3,500.0	7,032.0
6/20/2007	INDUCTION	12.0	7,052.0
7/17/2007	CEMENT BOND	2,300.0	6,992.0
12/29/2013	GYRO	12.0	6,700.0