

<div><div><div>RMWS</div><div>ROCKY MOUNTAIN WIRELINE SERVICE</div></div></div>			TEMPERATURE CCL LOG ( QUICK LOOK )		
Company TEP ROCKY MOUNTAIN LLC					
Well RU 321-7					
Field RULISON					
County GARFIELD			State COLORADO		
Location:			Other Services		
API # : 05-045-23134-00					
QtrCtr: SENW					
LAT . 39.457044					
LOG . -107.819690					
SEC 7 TWP 7S RGE 93W					
Permanent Datum G.L.			Elevation 7339'		
Log Measured From K.B.			Ft Above PD 24.0'		
Drilling Measured From K.B.			D.F. G.L. 7339'		
Date 10-10-2016					
Run Number ONE					
Depth Driller 9816'					
Present Depth Driller 9777'					
Depth Logger 9783'					
Bottom Logged Interval 9783'					
Top Log Interval SURFACE					
Fluid Level FULL					
Type Fluid WATER					
Max. Recorded Temp. 172.1° F					
Estimated Cement Top 3550'					
Equipment Number 216					
Location GRAND JCT.					
Recorded By MCBROOM					
Witnessed By MR. BROWN			MR. ABBEY		
Borehole Record			Casing Record		
Run Number Bit From To			Size 4.50"		
			Weight 11.6#		
			From SURFACE		
			To 9806'		

<<< Fold Here >>>

All interpretations are opinions based on inferences from electrical or other measurements and we cannot and do not guarantee the accuracy or correctness of any interpretation, and we shall not, except in the case of gross or willful negligence on our part, be liable or responsible for any loss, costs, damages, or expenses incurred or sustained by anyone resulting from any interpretation made by any of our officers, agents or employees. These interpretations are also subject to our general terms and conditions set out in our current Price Schedule.

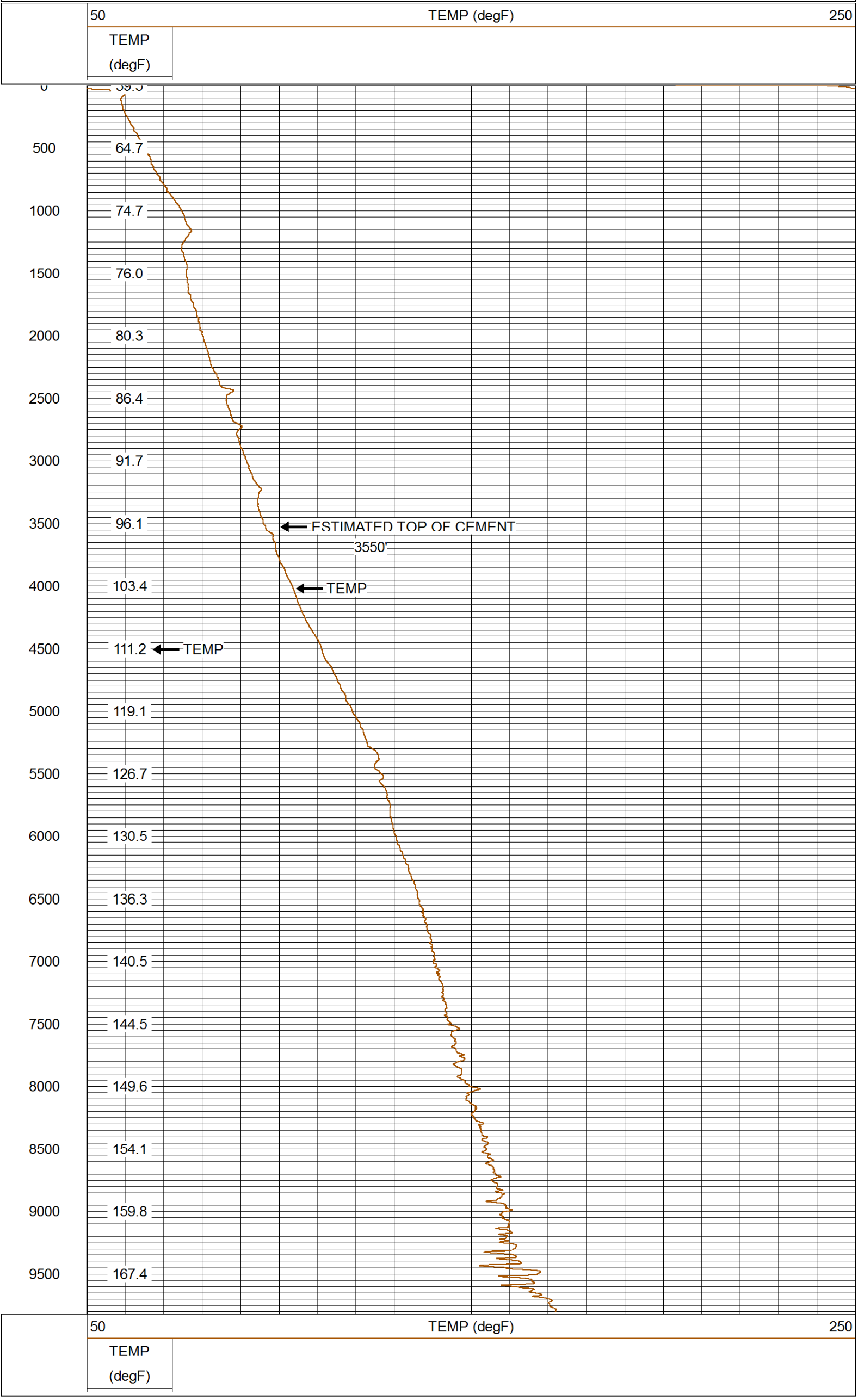
WARRIOR 7.0 SOFTWARE - Comments

NOTE; THERE WAS NO LOG FOR DEPTH CONTROL.  
SCALE MAIN PASS 5"= 100'.  
NOTE; SHORT JOINT AT 6017' TO 6039'.



## MAIN PASS ( QUICK LOOK )

Database File: 10102016\_tep\_ru 321-7.db  
Dataset Pathname: mainpass/pass1.1  
Presentation Format: rmtemp\_q  
Dataset Creation: Mon Oct 10 07:50:28 2016 by Calc SCH 120430  
Charted by: Depth in Feet scaled 1:10000



<div><div><div>RMWS</div><div>ROCKY MOUNTAIN WIRELINE SERVICE</div></div></div>	Company	TEP ROCKY MOUNTAIN LLC
	Well	RU 321-7
	Field	RULISON
	County	GARFIELD
	State	COLORADO