

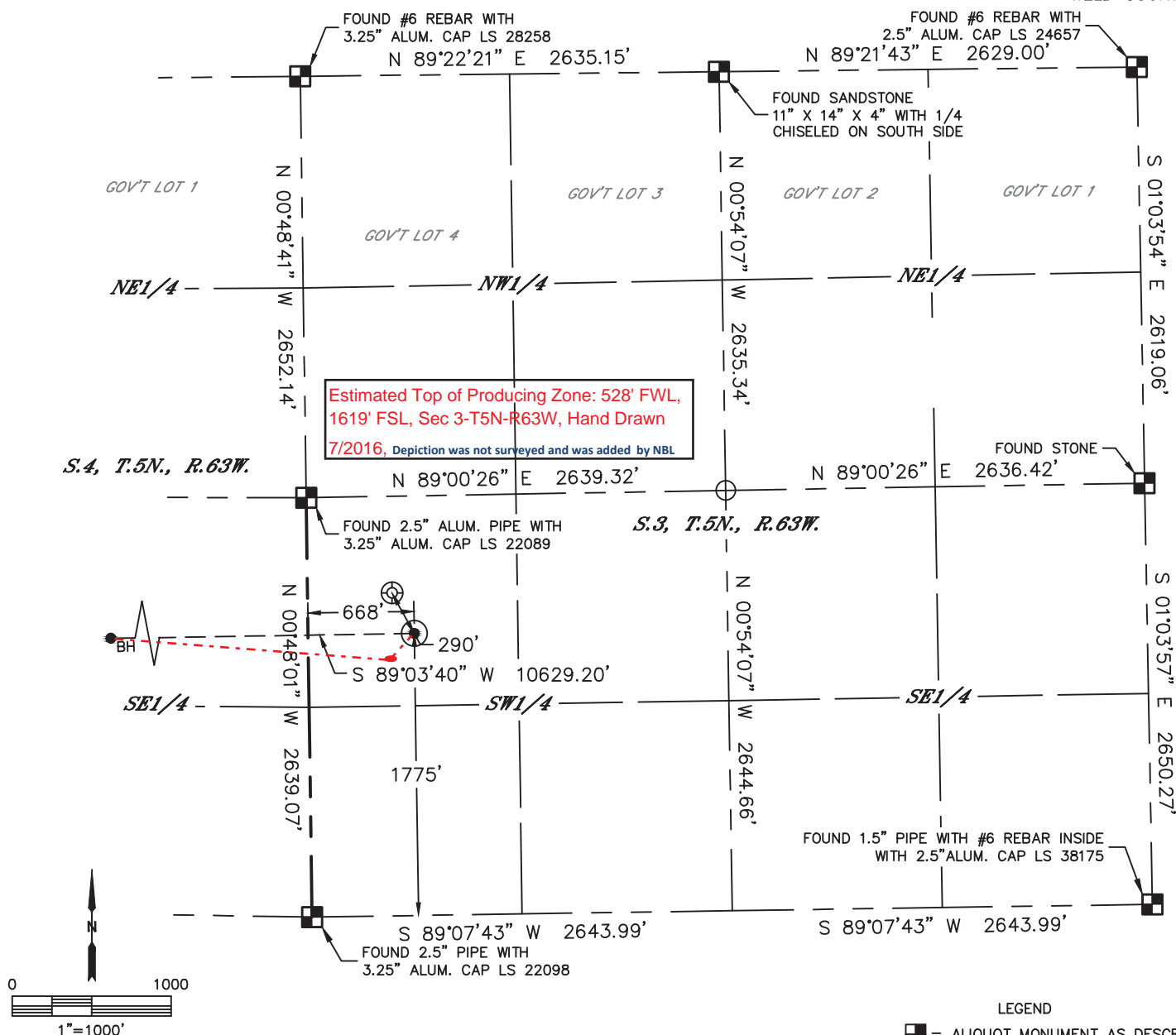


Lat40°, Inc. 6250 W. 10th Street, Unit 2, Greeley, CO 970-515-5294

WELL LOCATION CERTIFICATE

WELLS RANCH STATE BB05-635

SECTION: 3
TOWNSHIP: 5N
RANGE: 63W
6TH. P.M.
WELD COUNTY, CO



CLIENT: NOBLE ENERGY INC					LANDMAN: GREG WILSON				
INSTRUMENT OPERATOR: CASEY KOHOUT					SURVEY DATE: 8/19/2015		SURFACE USE: RANGELAND		
SHL FOOTAGE			SHL LAT °		SHL LONG °	SHL PDOP	SHL ELEV (FT.)	SHL 1/4/1/4	SHL S-T-R
1775	FSL	668	FWL	40.42602	-104.43014	2.0	4724	NWSW	3-5-63

BHL FOOTAGE				BHL LAT °	BHL LONG °	BHL S-T-R
1620	FSL	535	FWL	40.42588	-104.46830	5-5-63

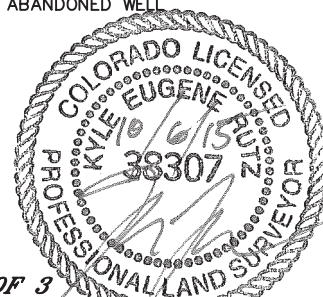
NEAREST EXISTING WELL IN SHL 1/4/1/4	
EX. WELLS RANCH USX BB03-12	±290' NW
NEAREST CULTURAL ITEMS	
BUILDING	5280'+
BUILDING UNIT	5280'+
HIGH OCCUPANCY BUILDING UNIT	5280'+
DESIGNATED OUTSIDE ACTIVITY AREA	5280'+
PUBLIC ROAD	5280'+
ABOVE GROUND UTILITY	5280'+
RAILROAD	5280'+
PROPERTY LINE	±668' W

NOTE:

- 1) Bearings shown are Grid Bearings of the Colorado State Plane Coordinate System, North Zone, North American Datum 1983. The lineal dimensions as contained herein are based upon the "U.S. Survey Foot."
- 2) Distances to section lines measured at 90 degrees from said section lines.
- 3) Ground elevations are based on an observed GPS elevation (NAVD 1988 DATUM).
- 4) Latitude and Longitude shown are (NAD 83 DATUM).
- 5) IMPROVEMENTS: See LOCATION DRAWING for all visible improvements within 500' of oil and gas location.
- 6) This map does not represent a boundary survey.

LEGEND

- = ALIQUOT MONUMENT AS DESCRIBED
- = CALCULATED POSITION
- = SURFACE HOLE LOCATION (SHL)
- ▲ = ENTRY POINT LOCATION (EP)
- BH = BOTTOM HOLE LOCATION (BHL)
- ⊕ = EXISTING WELL
- ⊙ = ABANDONED WELL



SHEET 1 OF 3

Kyle E. Rutz-On behalf of Lat40°, Inc.
Colorado Licensed Professional Land Surveyor No. 38307
DATE: 10/6/2015
PROJECT#: 2015126

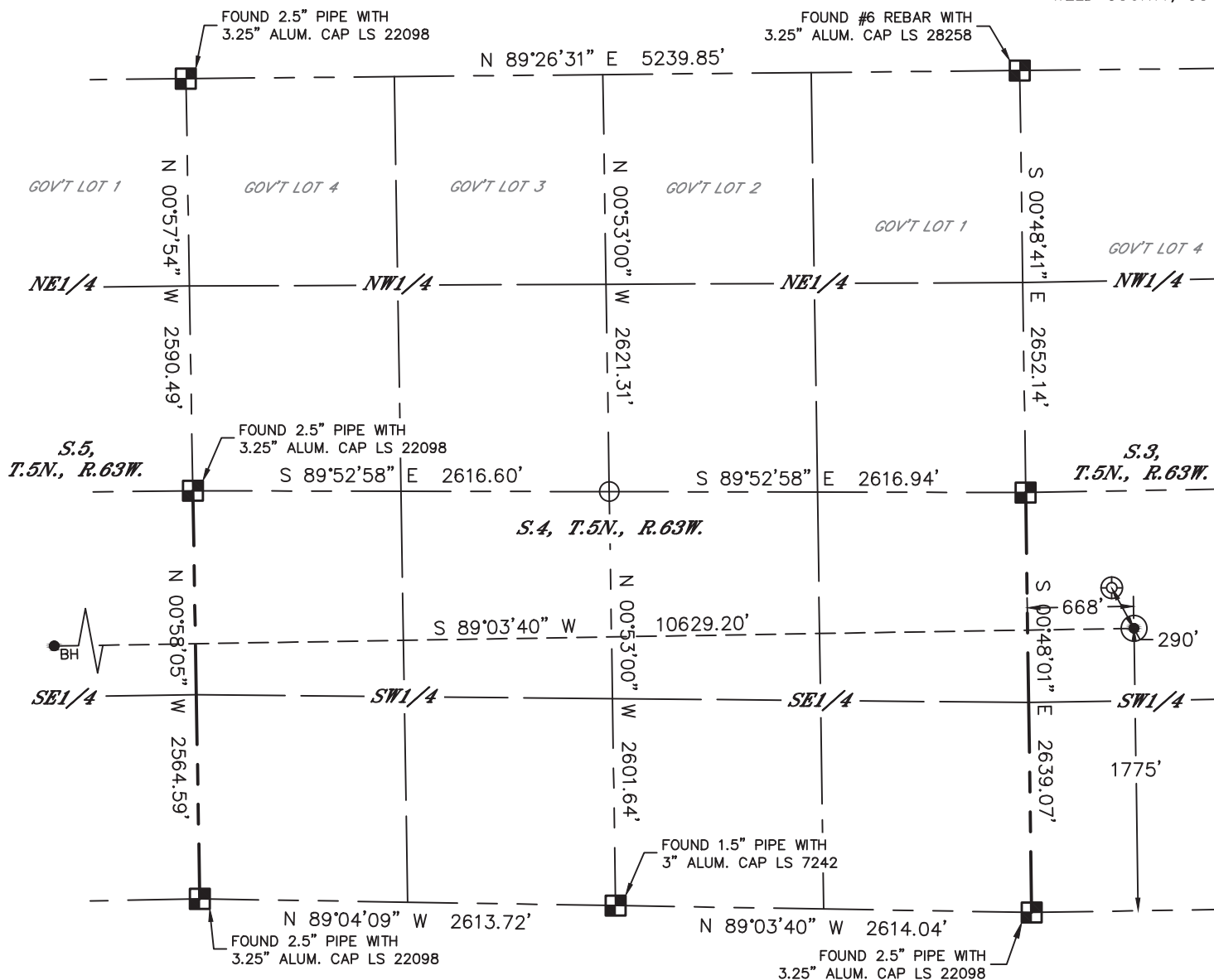


Lat40°, Inc. 6250 W. 10th Street, Unit 2, Greeley, CO 970-515-5294

WELL LOCATION CERTIFICATE

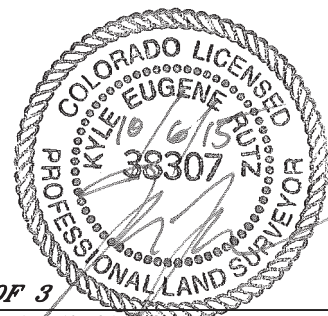
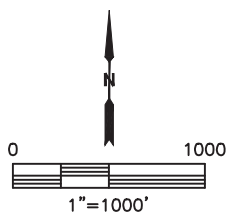
WELLS RANCH STATE BB05-635

SECTION: 3
TOWNSHIP: 5N
RANGE: 63W
6TH. P.M.
WELD COUNTY, CO



LEGEND

- = ALIQUOT MONUMENT AS DESCRIBED
- = CALCULATED POSITION
- ⊙ = SURFACE HOLE LOCATION (SHL)
- ▲ = ENTRY POINT LOCATION (EP)
- = BOTTOM HOLE LOCATION (BHL)
- ⊕ = EXISTING WELL
- ⊕ = ABANDONED WELL



SHEET 2 OF 3

Kyle E. Rutz—On behalf of Lat40°, Inc.
Colorado Licensed Professional Land Surveyor No. 38307
DATE: 10/6/2015
PROJECT#: 2015126

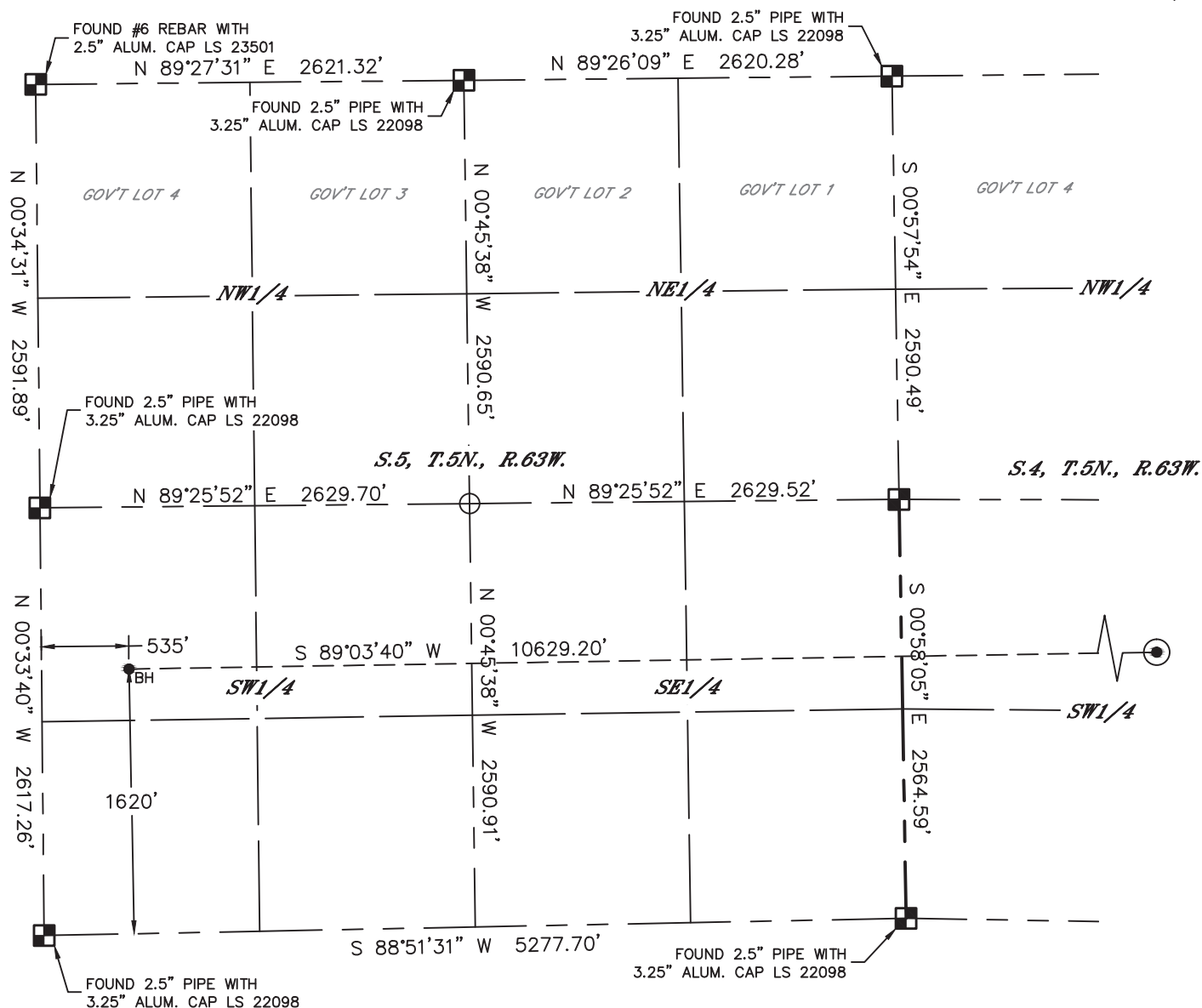


Lat40°, Inc. 6250 W. 10th Street, Unit 2, Greeley, CO 970-515-5294

WELL LOCATION CERTIFICATE

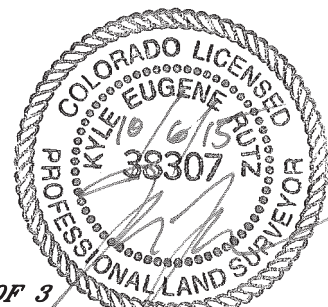
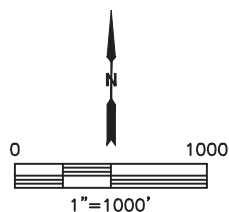
WELLS RANCH STATE BB05-635

SECTION: 3
TOWNSHIP: 5N
RANGE: 63W
6TH. P.M.
WELD COUNTY, CO



LEGEND

- = ALIQUOT MONUMENT AS DESCRIBED
- = CALCULATED POSITION
- = SURFACE HOLE LOCATION (SHL)
- ▲ = ENTRY POINT LOCATION (EP)
- BH = BOTTOM HOLE LOCATION (BHL)
- ⊙ = EXISTING WELL
- ⊙ = ABANDONED WELL



SHEET 3 OF 3

Kyle E. Rutz—On behalf of Lat40°, Inc.
Colorado Licensed Professional Land Surveyor No. 38307
DATE: 10/6/2015
PROJECT#: 2015126