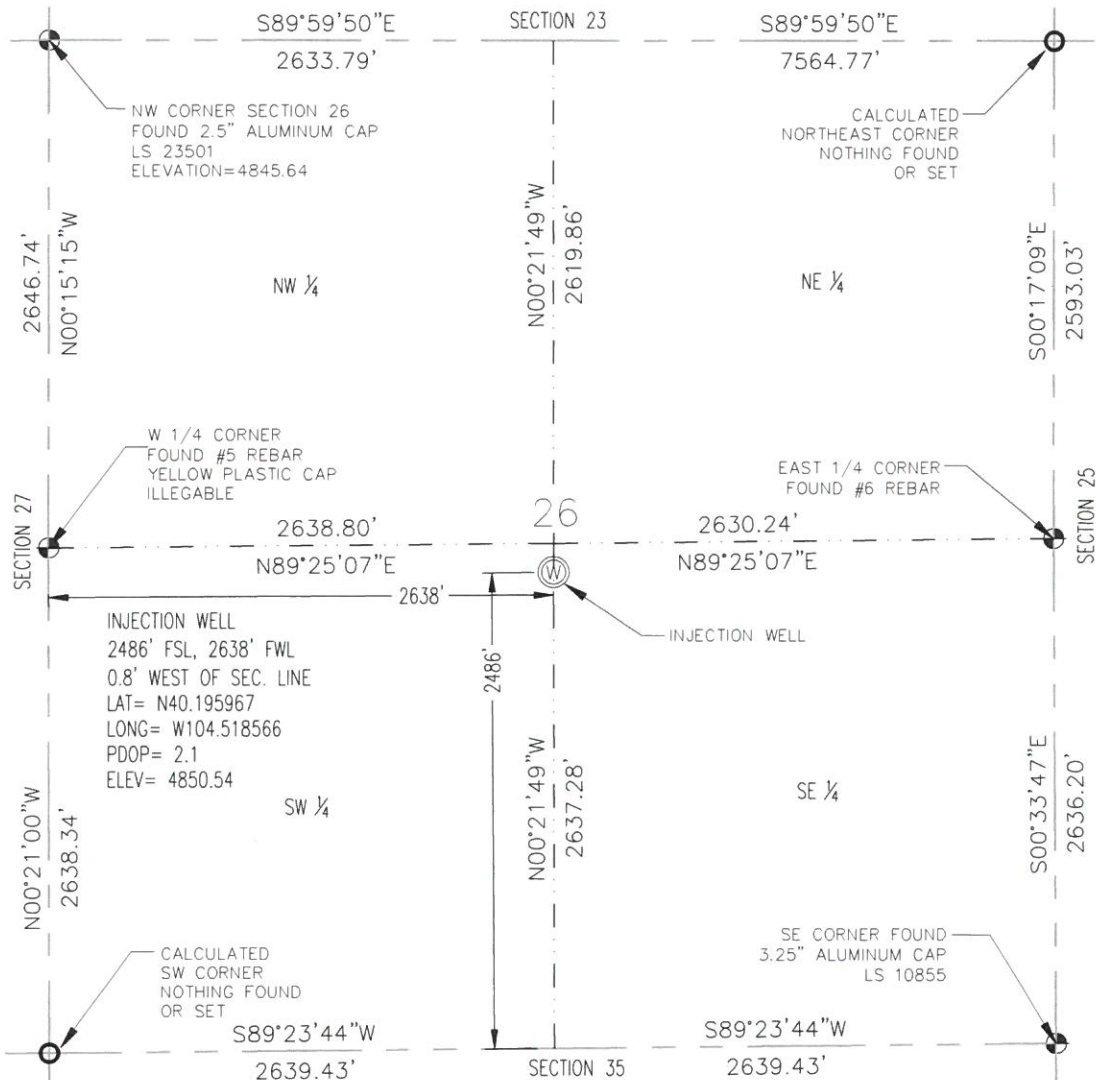


WELL LOCATION CERTIFICATE

BR-IW-1

SECTION 26
TOWNSHIP 3N
RANGE 64W



I HEREBY CERTIFY THAT THIS WELL LOCATION CERTIFICATE WAS PREPARED BY ME, OR UNDER MY DIRECT SUPERVISION, THAT THE FIELD WORK WAS COMPLETED ON 11/20/15, FOR AND ON BEHALF OF WASTE MANAGEMENT OF COLORADO INC., THAT IT IS NOT A LAND SURVEY PLAT OR AN IMPROVEMENT SURVEY PLAT, AND THAT IT IS NOT TO BE RELIED UPON FOR ESTABLISHMENT OF FENCES, BUILDINGS, OR OTHER FUTURE IMPROVEMENT LINES.

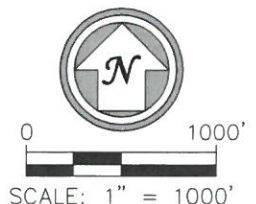
NOTES

1. BENCHMARK - BEING THE NORTHWEST CORNER OF SECTION 26 AND A 2.5" ALUMINUM CAP STAMPED LS23501. UTILIZING GPS OBSERVATIONS PER CSPZ 501.
2. BASIS OF BEARINGS - THE WEST LINE OF THE NORTHWEST ONE-QUARTER OF SECTION 26. MONUMENTED AT THE NORTH END BY A 2.5" ALUMINUM CAP STAMPED LS23501 AND AT THE SOUTH END BY A #5 REBAR WITH AN ILLEGIBLE YELLOW PLASTIC CAP WITH THE LINE ASSUMED TO BEAR N 00°15'15" E.
3. WELL WAS STAKED ON 11/20/15.



LEGEND

- ⊙ WELL BR-IW-1
- CALCULATED CORNER
- ⊕ FOUND MONUMENT



IN ACCORDANCE WITH A REQUEST FROM WASTE MANAGEMENT OF COLORADO INC., R&R ENGINEERS-SURVEYORS, INC. HAS DETERMINED THE WELL LOCATION OF THE BR-IW-1 WELL TO BE 2486' FROM THE SOUTH LINE AND 2638' FROM THE WEST LINE AS MEASURED AT RIGHT ANGLES FROM THE SECTION LINES OF SECTION 26, TOWNSHIP 3 NORTH, RANGE 64 WEST, OF THE 6TH PRINCIPAL MERIDIAN, WELD COUNTY, COLORADO.

WELL LOCATION CERTIFICATE

Date: 09/16/2016
Drawn: DF
Checked: AWS
Job No.: WM12069

Sheet
1
of
1

R&R ENGINEERS-SURVEYORS, INC.
710 WEST COLFAX AVENUE
DENVER, COLORADO 80204
PH: 303-733-6730
WWW.RRENGINEERS.COM