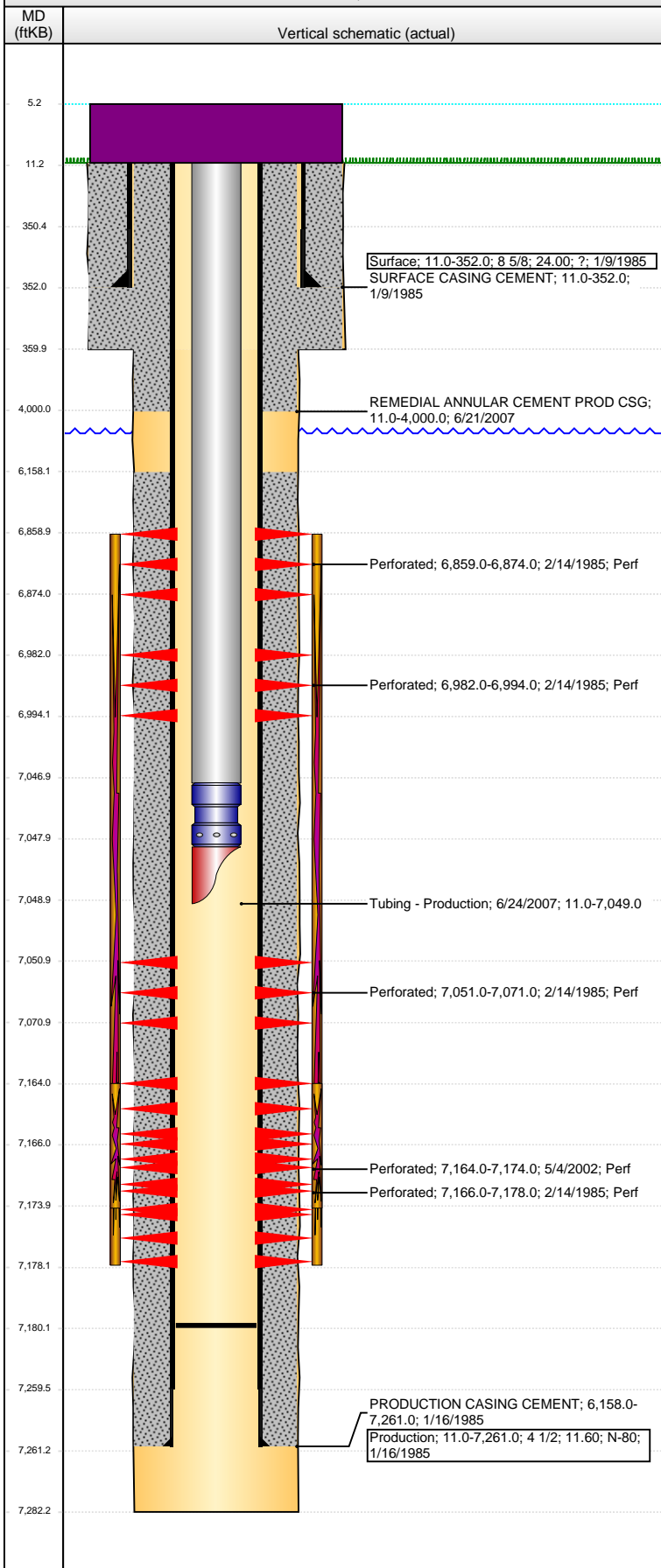


**Well Name: STATE HOPPE 16-01**

VERTICAL - ORIGINAL HOLE, 11/1/2016 12:28:56 PM



## Well Header

API	Business Unit	District	Well Config
05-123-12232	DJ BASIN	15	VERTICAL
Original KB Elevation (ft)	KB - GL / MSL (ftKB)	Spud Date	P & A Date
4,775	11.00	1/9/1985	
Comment			

## Directions To Well

## Congressional Location

Quarter 3	Quarter 4	Section	Township	Twship N/S Dir	Range	Range E/W Dir
SW	SW	16	6	N	66	W

## Bottom Hole Location

North-South Distance (ft)	From N or S Line	East-West Distance (ft)	From E or W Line

## Plug Back Total Depths

Date	Depth (ftKB)	Method	Com
2/7/1985	7,167.0	CASED HOLE LOG	DEPTH LOGGER ON CBL
6/22/2007	7,180.0	TAG	TALLY OOH W/ TBG

## Wellbore Sections

Section Des	Size (in)	Act Top, MD (ftKB)	Act Btm, MD (ftKB)
SURFACE	12 1/4	11	360
PRODUCTION	7 7/8	360	7,282

## Zone Statuses

Zone Name	Status Date	Status	Fluid Type	Job	Prod Method
NIOBRARA	3/5/1985	PR		DRILLING/CO...	
CODELL	3/5/1985	PR		DRILLING/CO...	
CODELL	5/9/2002	PR		RE-FRAC, 5/3/...	

## Casing Strings

### Surface, 352.0ftKB

Casing Description	Run Date	OD (in)	Wt/Len (l...	Grade	Top, MD (ft...	MD (ftKB)
Surface	1/9/1985	8 5/8	24.00	?	11.0	352.0

### Production, 7,261.0ftKB

Casing Description	Run Date	OD (in)	Wt/Len (l...	Grade	Top, MD (ft...	MD (ftKB)
Production	1/16/1985	4 1/2	11.60	N-80	11.0	7,261.0

## Cement

Description	Top Depth (ftKB)	Bottom Depth (ftKB)
SURFACE CASING CEMENT	11.0	352.0
Description	Top Depth (ftKB)	Bottom Depth (ftKB)
PRODUCTION CASING CEMENT	6,158.0	7,261.0
Description	Top Depth (ftKB)	Bottom Depth (ftKB)
REMEDIAL ANNULAR CEMENT PROD CSG	11.0	4,000.0

## Tubing Strings

Tubing Description	Run Date	String...	ID (in)	Wt (lb/ft)	Grade	Len (ft)	Set De...
Tubing - Production	6/24/2007	2 3/8	2.000	4.70		7,038.00	

## Tubing Components

Item Des	OD (in)	Wt (lb/ft)	Grade	Jts	Len (ft)	Btm (ftKB)	Btm (TVD) (ftKB)
Tubing	2 3/8	4.70		219	7,036.00	7,047.0	
Seat Nipple	2 3/8	4.70			1.00	7,048.0	
Mule Shoe	2 3/8	4.70			1.00	7,049.0	

## Perforation Data

Zone	Bnch/St g	Entered Shot Total	Top (ftKB)	Btm (ftKB)	Date
NIOBRARA, ORIGINAL HOLE	A	3	6,859.00	6,874.00	2/14/1985
NIOBRARA, ORIGINAL HOLE	B	3	6,982.00	6,994.00	2/14/1985
NIOBRARA, ORIGINAL HOLE	C	3	7,051.00	7,071.00	2/14/1985
CODELL, ORIGINAL HOLE		40	7,164.00	7,174.00	5/4/2002
CODELL, ORIGINAL HOLE		6	7,166.00	7,178.00	2/14/1985

## Stimulations & Treatments

Date	Zone	Primary Job Type
2/26/1985	NIOBRARA-CODELL, ORIGINAL HOLE	DRILLING/COMPLETION - ORIGINAL
Technical Result	Tech Result Details	Tech Result Note

Comment  
CDL/NIO LIMITED ENTRY FRAC; BROKE FRMTNS W/ ACID ON THE 15TH & 16TH; ACID TOTALS ADDED TO 2/26/1985 FRAC; DARK OIL FLOW ON SURFACE CSG; POSSIBLY FROM SUSSEX/SHANNON.

**Well Name: STATE HOPPE 16-01**

VERTICAL - ORIGINAL HOLE, 11/1/2016 12:28:59 PM

## Stimulations & Treatments

Date 5/7/2002	Zone CODELL, ORIGINAL HOLE	Primary Job Type RE-FRAC
Technical Result	Tech Result Details	Tech Result Note
Comment		

## Other In Hole

Run Date	Des	OD (in)	Top (ftKB)	Btm (ftKB)

## Logs

Date	Type	Top, MD (ftKB)	Btm, MD (ftKB)
1/15/1985	INDUCTION	352.0	7,276.0
1/15/1985	NEUTRON DENSITY	3,550.0	7,276.0
2/27/1985	SONIC CEMENT	6,100.0	7,164.0

