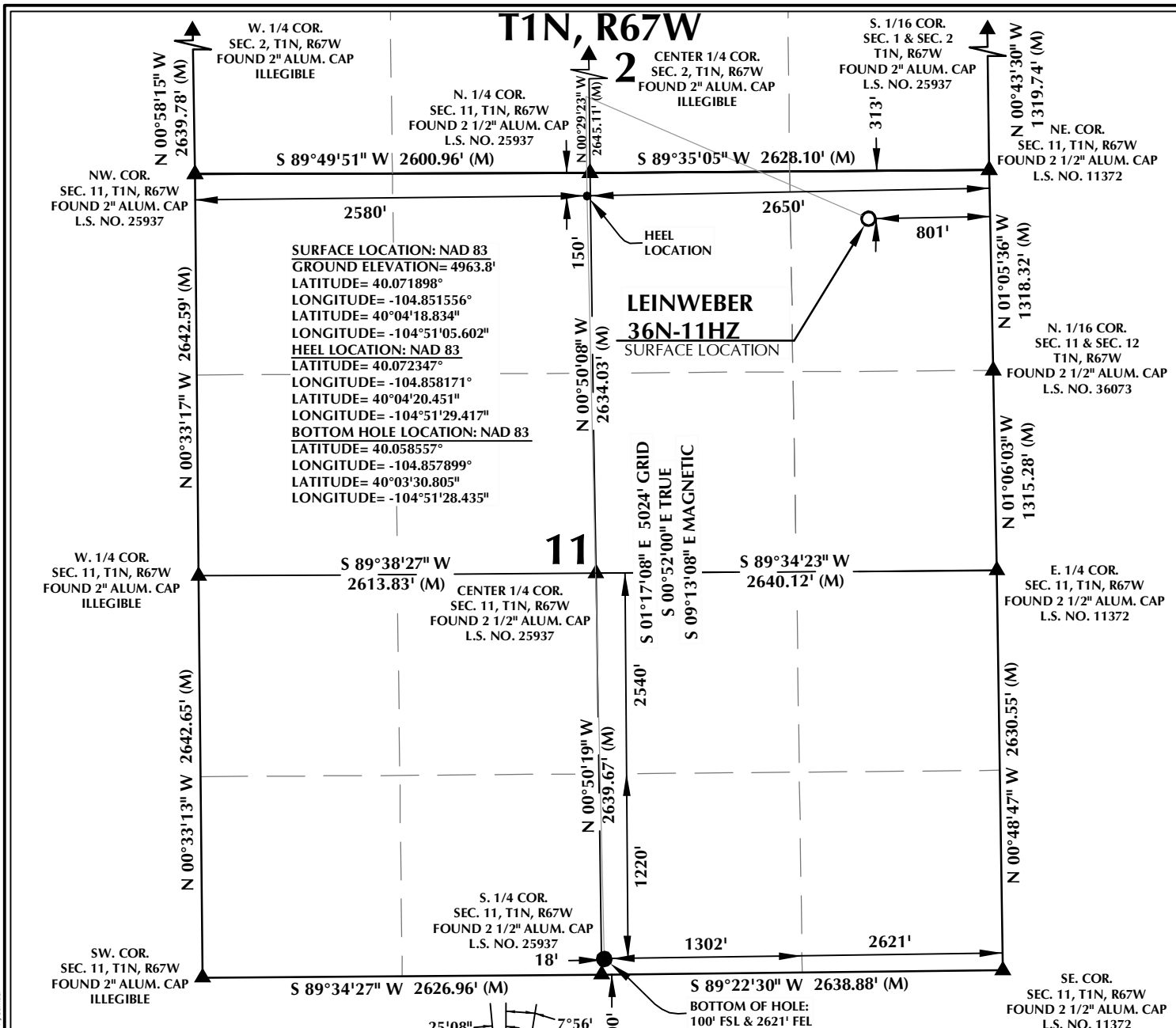


K:\AMDAR\2016\2016.33 LEINWEBER 37C-11HZ LEINWEBER 37C-11HZ RAT.dwg, 5/26/2016 4:18:41 PM, samuel

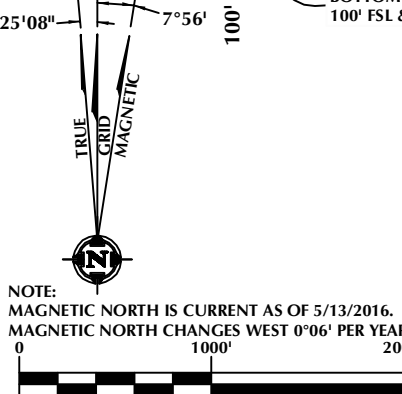


#### CERTIFICATE OF SURVEYOR:

THIS IS TO CERTIFY THAT THE ABOVE PLAT WAS PREPARED FROM FIELD NOTES OF ACTUAL SURVEY MADE BY ME OR UNDER MY SUPERVISION AND THAT THESE ARE TRUE AND CORRECT TO THE BEST OF MY KNOWLEDGE AND BELIEF. THIS CERTIFICATE DOES NOT REPRESENT A LAND SURVEY PLAT OR IMPROVEMENT SURVEY PLAT AS DEFINED BY C.R.S. 38-51-102 AND CANNOT BE RELIED UPON TO DETERMINE OWNERSHIP.

*Randall K. French*  
RANDALL K. FRENCH  
PROFESSIONAL LAND SURVEYOR  
COLORADO REGISTRATION NUMBER 18512  
5/24/16

NOTICE:  
ACCORDING TO COLORADO STATE LAW YOU MUST COMMENCE ANY LEGAL ACTION BASED UPON ANY DEFECT IN THIS SURVEY WITHIN THREE YEARS AFTER YOU FIRST DISCOVER SUCH DEFECT. IN NO EVENT MAY ANY ACTION BASED UPON ANY DEFECT IN THIS SURVEY BE COMMENCED MORE THAN TEN YEARS FROM THE DATE ON THE CERTIFICATION SHOWN HEREON.



SCALE: 1" = 1000'

#### NOTES:

1. ▲ INDICATES SECTION CORNER
2. ● INDICATES CALCULATED CORNER
3. ELEVATION BASED ON NAVD88 (GEOID12B)
4. BASIS OF BEARING DERIVED FROM COLORADO COORDINATE SYSTEM 1983 NORTH ZONE.
5. ALL MEASURED DISTANCES ARE GRID. COMBINED SCALE FACTOR: .99972422 CALCULATED FROM THE NW CORNER OF SECTION 11
6. OPERATOR: ROB WILSON / PDOP = 1.3
7. SEE ADDENDUM TO WELL LOCATION CERTIFICATE FOR EXISTING IMPROVEMENTS WITHIN 500' OF THE WELL PAD.
8. WELL FOOTAGES ARE MEASURED AT RIGHT ANGLES TO THE SECTION LINES.
9. THE BOTTOM OF HOLE BEARS S01°17'08"E, 5024' FROM THE HEEL LOCATION.

#### WELL PAD - LEINWEBER 37C-11HZ

LEINWEBER 36N-11HZ  
WELL LOCATION CERTIFICATE  
313' FNL & 801' FEL NENE (SURFACE)  
150' FNL & 2580' FWL NENW (HEEL)  
100' FSL & 2621' FEL SWSE (BOTTOM)  
LOCATED IN SECTION 11  
T1N, R67W, 6TH P.M.  
WELD COUNTY, COLORADO

Kerr-McGee Oil &  
Gas Onshore L.P.  
1099 18th Street  
Denver, Colorado 80202



#### CONSULTING, LLC

SHERIDAN OFFICE  
1095 Saberton Avenue  
Sheridan, Wyoming 82801  
Phone 307-674-0609

LOVELAND OFFICE  
1635 Foxtrail Drive, Suite 204  
Loveland, Colorado 80538  
Phone 970-776-4331

DRAFTED BY:	LMO	CHECKED BY:	RKF
DATE DRAFTED:	5/24/16	DATE SURVEYED:	4/25/16
REVISED:		FILE NAME:	16-33