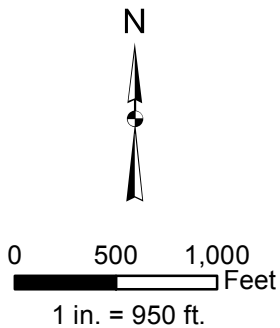
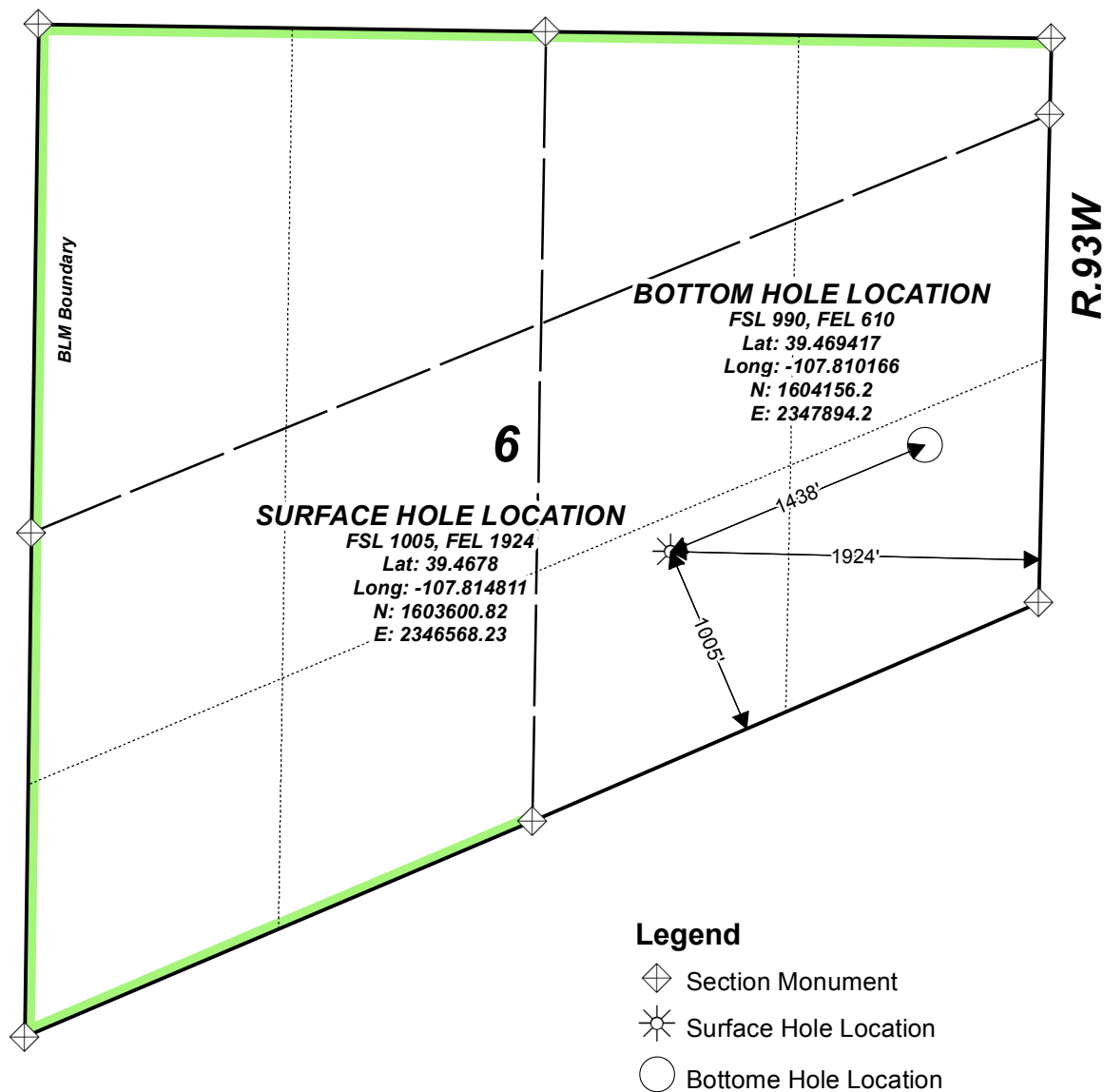


RU 444-6

T.7S.



Map Date: 10/25/2016

Scale: 1" = 950'

Page 1 of 1

Well Location Plat

TEP Rocky Mountain LLC

SW1/4 SE1/4, SECTION 6,
T.7S., R.93W, of the 6th. P.M.
GARFIELD COUNTY, COLORADO