

T6N, R81W, 6th P.M.

# SandRidge Exploration & Production, LLC

Well location, RABBIT EARS 0681 1-23H located as shown in the SW1/4NE1/4 of Section 23, T6N, R81W, 6th P.M., Jackson County, Colorado.

## BASIS OF BEARINGS:

US STATE PLANE 1983  
CO NORTH 0501 GRID

## BASIS OF ELEVATION

SPOT ELEVATION AT THE NW CORNER OF SECTION 23, T6N, R81W, 6TH PM, TAKEN FROM THE SPICER PEAK QUADRANGLE, USGS 7.5 MIN QUAD (TOPOGRAPHIC MAP) WITH SAID ELEVATION MARKED AS BEING 8313 FEET.

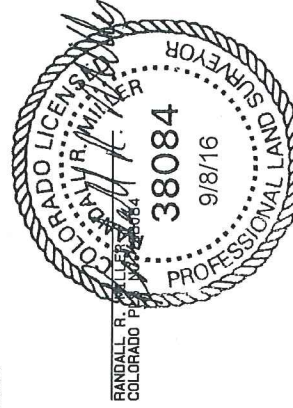
## LEGEND

90° SYMBOL  
FOUND CORNER  
PROPOSED WELL  
PROPOSED BHL/LPL

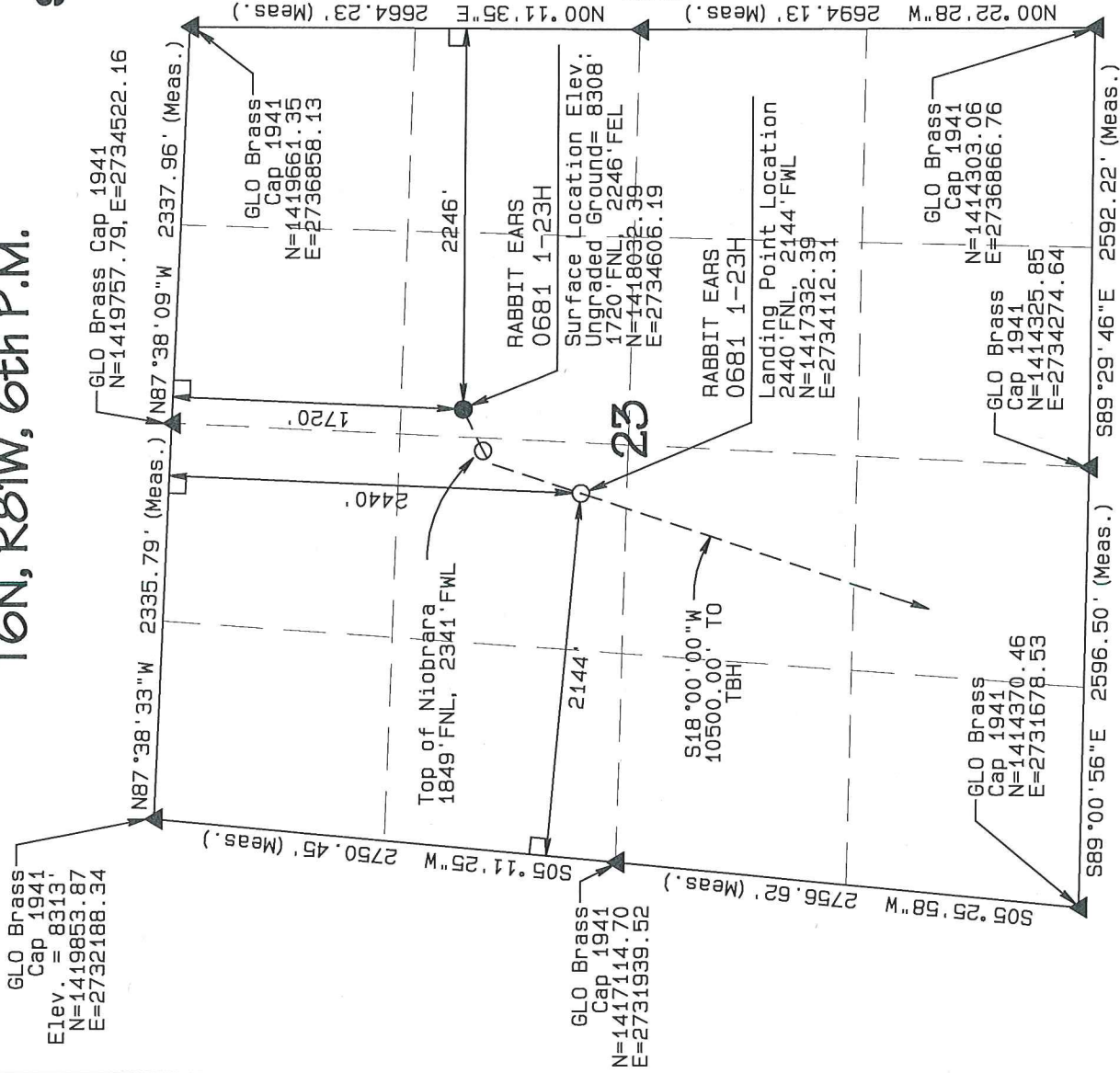
GRAPHIC SCALE 1"=1000'



THIS IS TO CERTIFY THAT THE ABOVE PLAT WAS PREPARED FROM FIELD NOTES AND THAT THE SAME ARE TRUE AND CORRECT TO THE BEST OF MY KNOWLEDGE AND BELIEF.



NORTH PARK ENGINEERING & CONSULTING, INC.  
P.O. BOX 395  
WALDEN, CO 80480  
(970) 723-3725



NAD 83 (TOP OF NIOBRARA)		NAD 83 (SURFACE LOCATION)	
LATITUDE=40.476549°N LONGITUDE=106.454877°W		LATITUDE=40.476982°N LONGITUDE=106.454006°W PDOP = 1.270	
NAD 83 (LEASE ENTRY)		NAD 83 (TARGET BOTTOM HOLE)	
LATITUDE=40.455772°N LONGITUDE=106.463653°W		LATITUDE=40.447539°N LONGITUDE=106.467025°W	
NAD 83 (LANDING POINT LOCATION)		NAD 83 (LANDING POINT LOCATION)	
LATITUDE=40.455772°N LONGITUDE=106.463653°W		LATITUDE=40.475032°N LONGITUDE=106.455755°W	

DATE OF FIELD WORK: MAR 20, 2016  
DRAWING COMPLETION: JUN 8, 2016  
SURVEYED BY: ADL  
DRAWN BY: TGH  
CHECKED BY: FRM  
REVISED: 9/7/2016

# T6N, R81W, 6th P.M.

## SandRidge Exploration & Production, LLC

Intermediate Section, RABBIT EARS 0681 1-23H located as shown in the W1/2 of Section 26, T6N, R81W, 6th P.M., Jackson County, Colorado.

### BASIS OF BEARINGS:

US STATE PLANE 1983  
CO NORTH 0501 GRID

### BASIS OF ELEVATION

SPOT ELEVATION AT THE NW CORNER OF SECTION 23, T6N, R81W, 6TH PM, TAKEN FROM THE SPIKER PEAK QUADRANGLE, USGS 7.5 MIN QUAD (TOPOGRAPHIC MAP) WITH SAID ELEVATION MARKED AS BEING 8313 FEET.

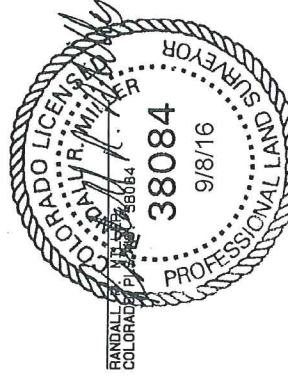
### LEGEND

- 90° SYMBOL
- FOUND CORNER
- PROPOSED WELL
- PROPOSED BHL/LPL

GRAPHIC SCALE 1"=1000'



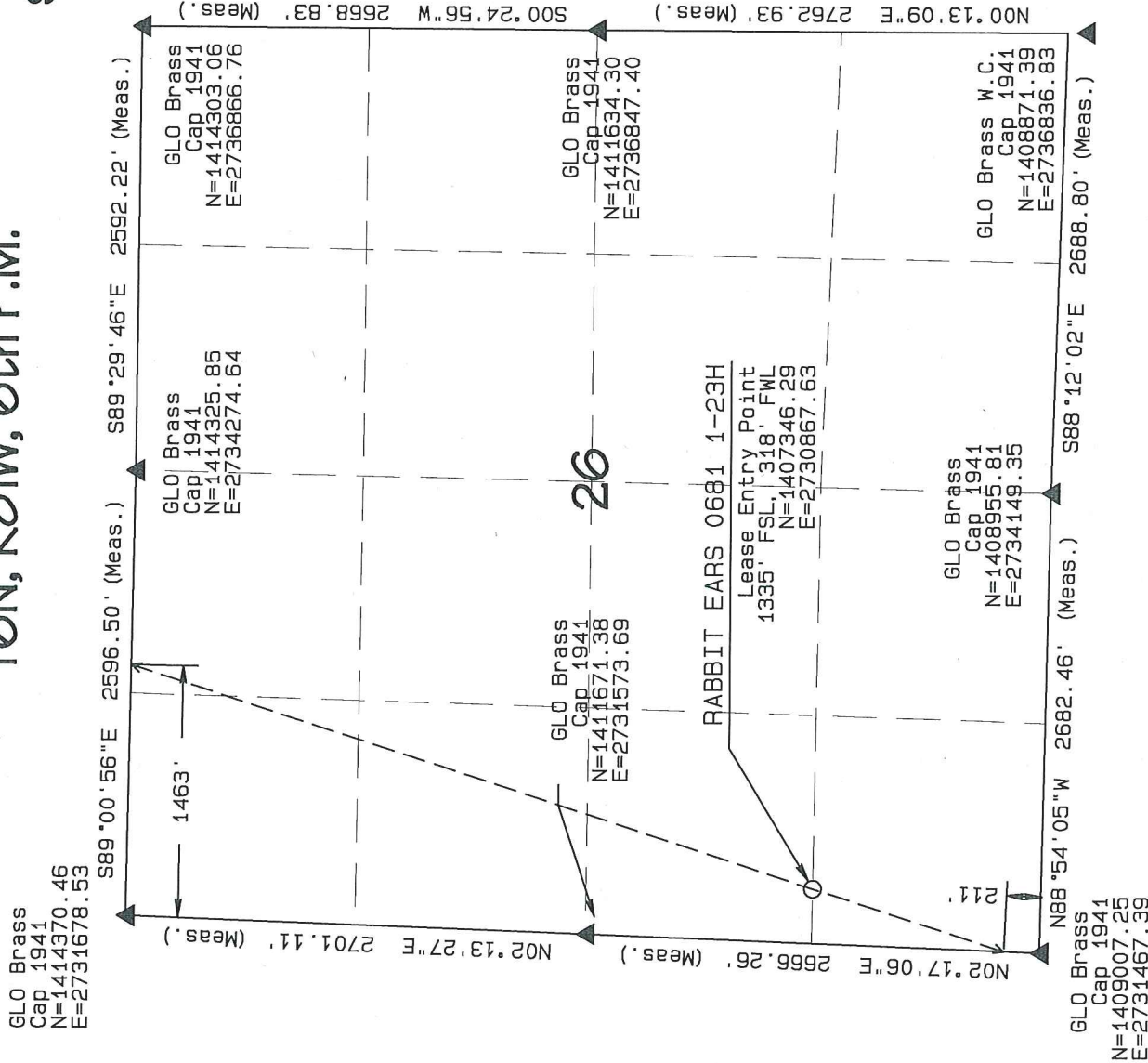
THIS IS TO CERTIFY THAT THE ABOVE PLAT WAS PREPARED FROM FIELD NOTES AND SURVEY DATA MADE BY ME OR UNDER MY SUPERVISION AND THAT THE SAME ARE TRUE AND CORRECT TO THE BEST OF MY KNOWLEDGE AND BELIEF.



NORTH PARK ENGINEERING & CONSULTING, INC.

P.O. BOX 395  
WALDEN, CO 80480  
(970) 723-3725

DATE OF FIELD WORK: MAR 20, 2016 DRAWING COMPLETION: JUN 8, 2016  
SURVEYED BY: ADL DRAWN BY: TKH CHECKED BY: RRM  
REVISED: 9/7/2016



	NAD 83 (TOP OF NIOBRARA)	NAD 83 (SURFACE LOCATION)
	LATITUDE=40.476649°N LONGITUDE=106.454877°W	LATITUDE=40.476982°N LONGITUDE=106.454006°W
		PDOP = 1.270
NAD 83 (LEASE ENTRY)	NAD 83 (TARGET BOTTOM HOLE)	NAD 83 (LANDING POINT LOCATION)
LATITUDE=40.455772°N LONGITUDE=106.463653°W	LATITUDE=40.447539°N LONGITUDE=106.4467025°W	LATITUDE=40.475046°N LONGITUDE=106.455754°W



# SandRidge Exploration & Production, LLC

Intermediate Section, RABBIT EARS 0681 1-23H located as shown in the SE1/4SE1/4 of Section 27, T6N, R81W, 6th P.M., Jackson County, Colorado.

## BASIS OF BEARINGS:

US STATE PLANE 1983  
CO NORTH 0501 GRID

## BASIS OF ELEVATION

SPOT ELEVATION AT THE NW CORNER OF SECTION 23, T6N, R81W, 6TH PM, TAKEN FROM THE SPICER PEAK QUADRANGLE, USGS 7.5 MIN QUAD (TOPOGRAPHIC MAP) WITH SAID ELEVATION MARKED AS BEING 8313 FEET.

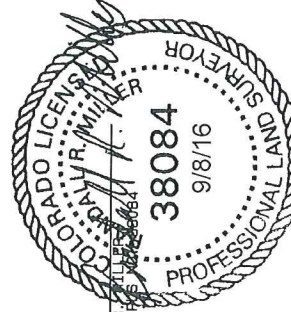
## LEGEND

- 90° SYMBOL
- FOUND CORNER
- PROPOSED WELL
- PROPOSED BHL/LPL

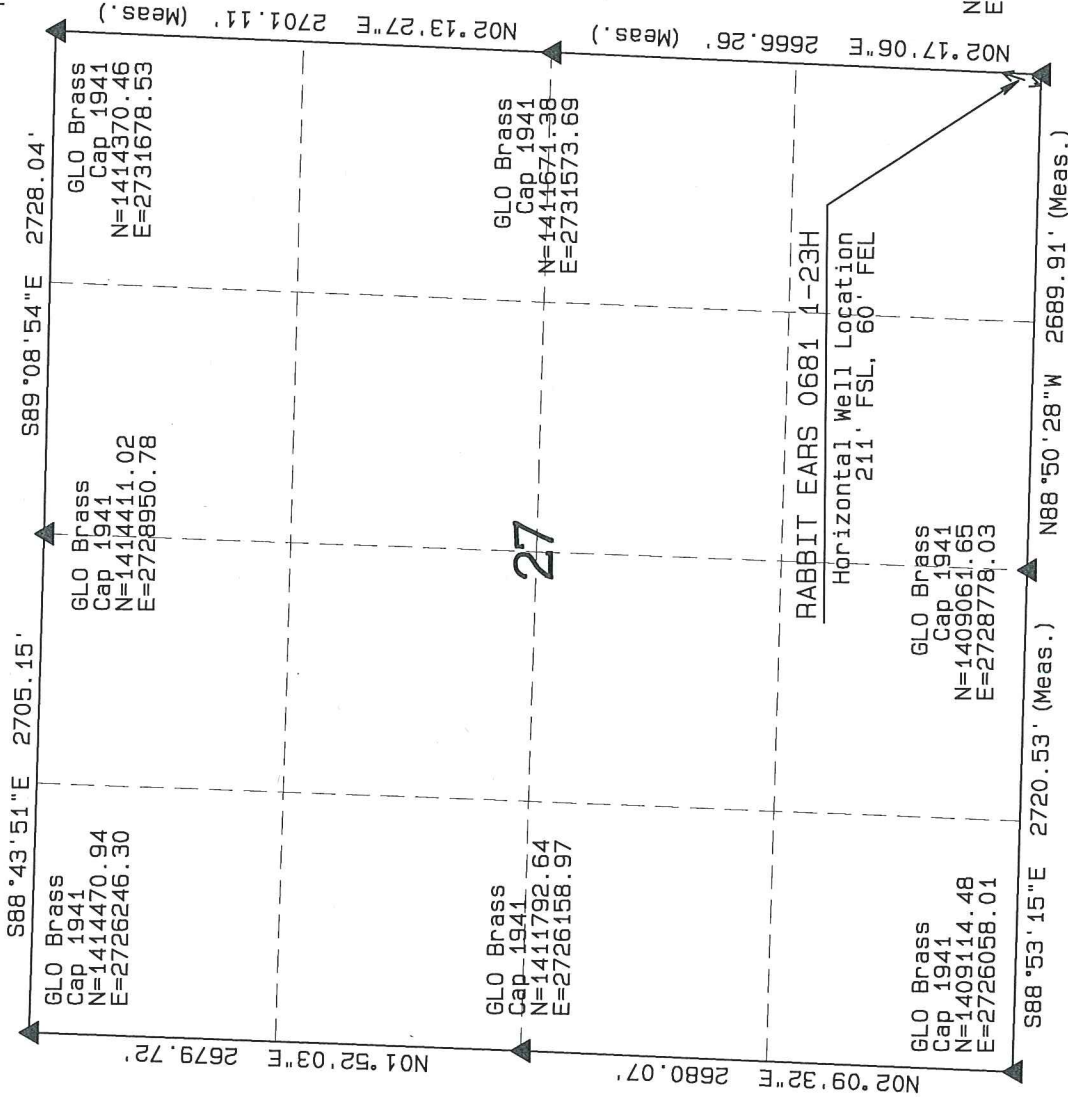
GRAPHIC SCALE 1"=1000'



THIS IS TO CERTIFY THAT THE ABOVE PLAT WAS PREPARED FROM FIELD NOTES OF ACTUAL SURVEY MADE BY ME OR UNDER MY SUPERVISION AND THAT THE SAME ARE TRUE AND CORRECT TO THE BEST OF MY KNOWLEDGE AND BELIEF.



GLO Brass  
Cap 1941  
N=1409007.25  
E=2731467.39



NORTH PARK ENGINEERING & CONSULTING, INC.			
P.O. BOX 395 WALDEN, CO 80480 (970) 723-3725			
DATE OF FIELD WORK: MAR 20, 2016		DRAWING COMPLETION: JUN 8, 2016	
SURVEYED BY: ADL		DRAWN BY: TKH	
REVISED: 9/7/2016		CHECKED BY: RRM	
NAD 83 (LEASE ENTRY)	NAD 83 (TOP OF NIOBRARA)	NAD 83 (SURFACE LOCATION)	NAD 83 (LANDING POINT LOCATION)
LATITUDE=40.455772°N LONGITUDE=106.463653°W	LATITUDE=40.476649°N LONGITUDE=106.454877°W	LATITUDE=40.476982°N LONGITUDE=106.454006°W PDOP = 1.270	LATITUDE=40.475046°N LONGITUDE=106.455754°W
	NAD 83 (TARGET BOTTOM HOLE)		
	LATITUDE=40.447539°N LONGITUDE=106.467025°W		

# T6N, R81W, 6th P.M.

## SandRidge Exploration & Production, LLC

Target Bottom Hole, RABBIT EARS 0681 1-23H  
located as shown in the SE1/4NE1/4 of Section 34,  
T6N, R81W, 6th P.M., Jackson County, Colorado.

### BASIS OF BEARINGS:

US STATE PLANE 1983  
CO NORTH 0501 GRID

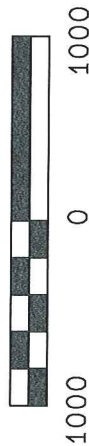
### BASIS OF ELEVATION

SPOT ELEVATION AT THE NW CORNER OF SECTION 23,  
T6N, R81W, 6TH PM, TAKEN FROM THE SPICER PEAK  
QUADRANGLE, USGS 7.5 MIN QUAD (TOPOGRAPHIC MAP)  
WITH SAID ELEVATION MARKED AS BEING 8313 FEET.

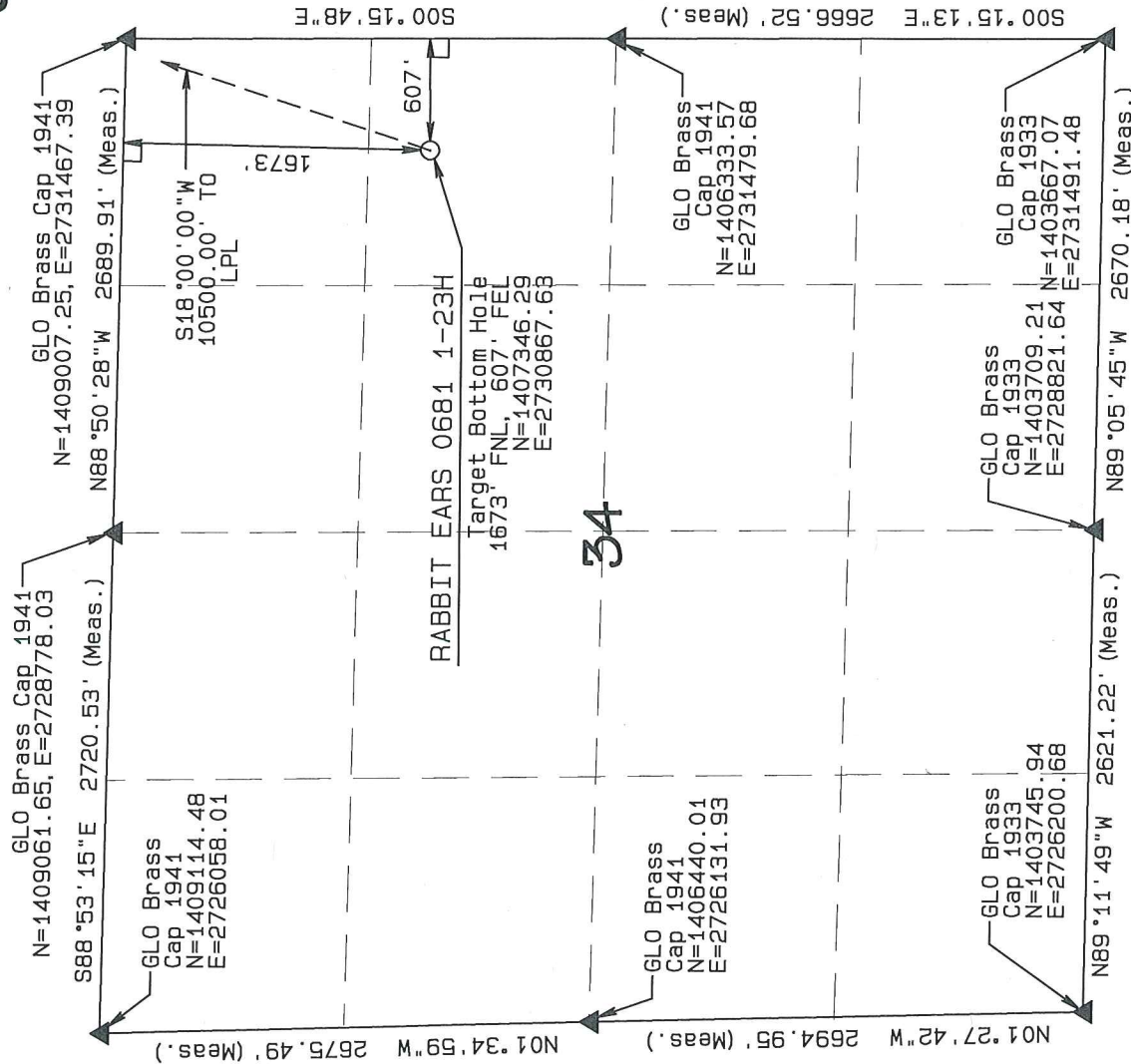
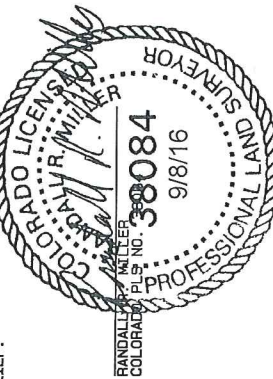
### LEGEND

- 90° SYMBOL
- FOUND CORNER
- PROPOSED WELL
- PROPOSED BHL/LPL

GRAPHIC SCALE 1"=1000'



THIS IS TO CERTIFY THAT THE ABOVE PLAT WAS PREPARED FROM  
FIELD NOTES OF ACTUAL SURVEYING MADE BY ME OR UNDER MY  
SUPERVISION AND THAT THE SAME ARE TRUE AND CORRECT TO THE  
BEST OF MY KNOWLEDGE AND BELIEF.



## NORTH PARK ENGINEERING & CONSULTING, INC.

P.O. BOX 395  
WALDEN, CO 80480  
(970) 723-3725

NAD 83 (TOP OF NIOBRARA)		NAD 83 (SURFACE LOCATION)	
LATITUDE=40.476649°N LONGITUDE=106.454877°W		LATITUDE=40.476982°N LONGITUDE=106.454006°W	
NAD 83 (LEASE ENTRY)		NAD 83 (LANDING POINT LOCATION)	
LATITUDE=40.455772°N LONGITUDE=106.463653°W		LATITUDE=40.475046°N LONGITUDE=106.455754°W	

DATE OF FIELD WORK: MAR 20, 2016 DRAWING COMPLETION: JUN 8, 2016  
SURVEYED BY: ADL DRAWN BY: TKH CHECKED BY: RRM  
REVISED: 9/7/2016