

T6N, R81W, 6th P.M.

SandRidge Exploration & Production, LLC

Well location, RABBIT EARS 0681 3-23H located as shown in the SW1/4NE1/4 of Section 23, T6N, R81W, 6th P.M., Jackson County, Colorado.

BASIS OF BEARINGS:

US STATE PLANE 1983
CO NORTH 0501 GRID

BASIS OF ELEVATION

SPOT ELEVATION AT THE NW CORNER OF SECTION 23, T6N, R81W, 6TH PM, TAKEN FROM THE SPIKER PEAK, QUADRANGLE, USGS 7.5 MIN QUAD (TOPOGRAPHIC MAP) WITH SAID ELEVATION MARKED AS BEING 8313 FEET.

LEGEND

- 90° SYMBOL
- FOUND CORNER
- PROPOSED WELL
- PROPOSED BHL/LPL

GLO Brass Cap 1941
N=1416997.13 GRAPHIC SCALE 1"=1000'
E=2736849.15



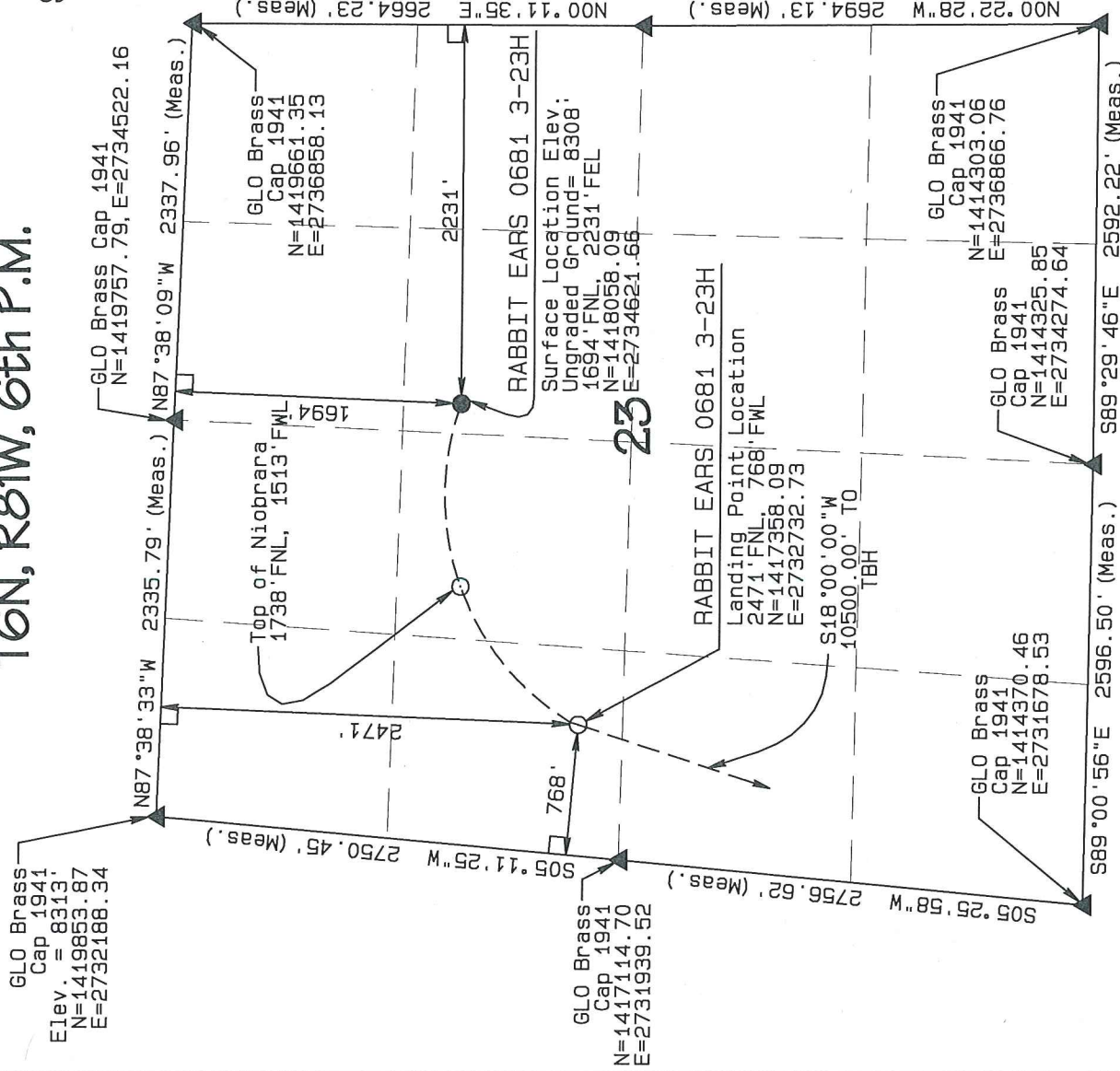
THIS IS TO CERTIFY THAT THE ABOVE PLAT WAS PREPARED FROM FIELD NOTES OF ACTUAL SURVEY MADE UNDER MY SUPERVISION AND THAT THE SAME ARE TRUE AND CORRECT TO THE BEST OF MY KNOWLEDGE AND BELIEF.



NORTH PARK ENGINEERING & CONSULTING, INC.

P.O. BOX 395
WALDEN, CO 80480
(970) 723-3725

DATE OF FIELD WORK: MAR 20, 2016 DRAWING COMPLETION: JUN 8, 2016
SURVEYED BY: ADL DRAWN BY: TKH CHECKED BY: RRM
REVISED: 9/7/2016



NAD 83 (TOP OF NIOBRARA)	NAD 83 (SURFACE LOCATION)
LATITUDE=40.477021°N LONGITUDE=106.457822°W	LATITUDE=40.477052°N LONGITUDE=106.453952°W
PDOP = 1.912	
NAD 83 (LEASE ENTRY)	NAD 83 (TARGET BOTTOM HOLE)
LATITUDE=40.463144°N LONGITUDE=106.465603°W	LATITUDE=40.447568°N LONGITUDE=106.471983°W
NAD 83 (LANDING POINT LOCATION)	NAD 83 (LANDING POINT LOCATION)
LATITUDE=40.463144°N LONGITUDE=106.465603°W	LATITUDE=40.475862°N LONGITUDE=106.460393°W

T6N, R81W, 6th P.M.

SandRidge Exploration & Production, LLC

Intermediate Section, RABBIT EARS 0681 3-23H located as shown in the NW1/4NW1/4 of Section 26, T6N, R81W, 6th P.M., Jackson County, Colorado.

BASIS OF BEARINGS:

US STATE PLANE 1983
CO NORTH 0501 GRID

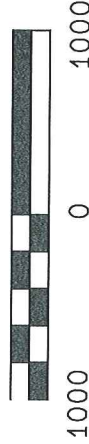
BASIS OF ELEVATION

SPOT ELEVATION AT THE NW CORNER OF SECTION 23, T6N, R81W, 6TH PM, TAKEN FROM THE SPICER PEAK QUADRANGLE, USGS 7.5 MIN QUAD (TOPOGRAPHIC MAP) WITH SAID ELEVATION MARKED AS BEING 8313 FEET.

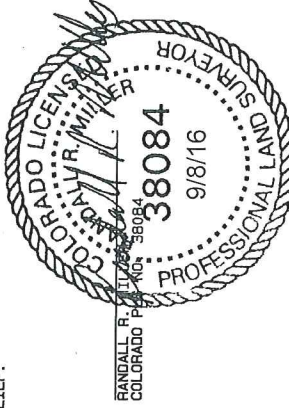
LEGEND

- 90° SYMBOL
- FOUND CORNER
- PROPOSED WELL
- PROPOSED BHL/LPL

GRAPHIC SCALE 1"=1000'

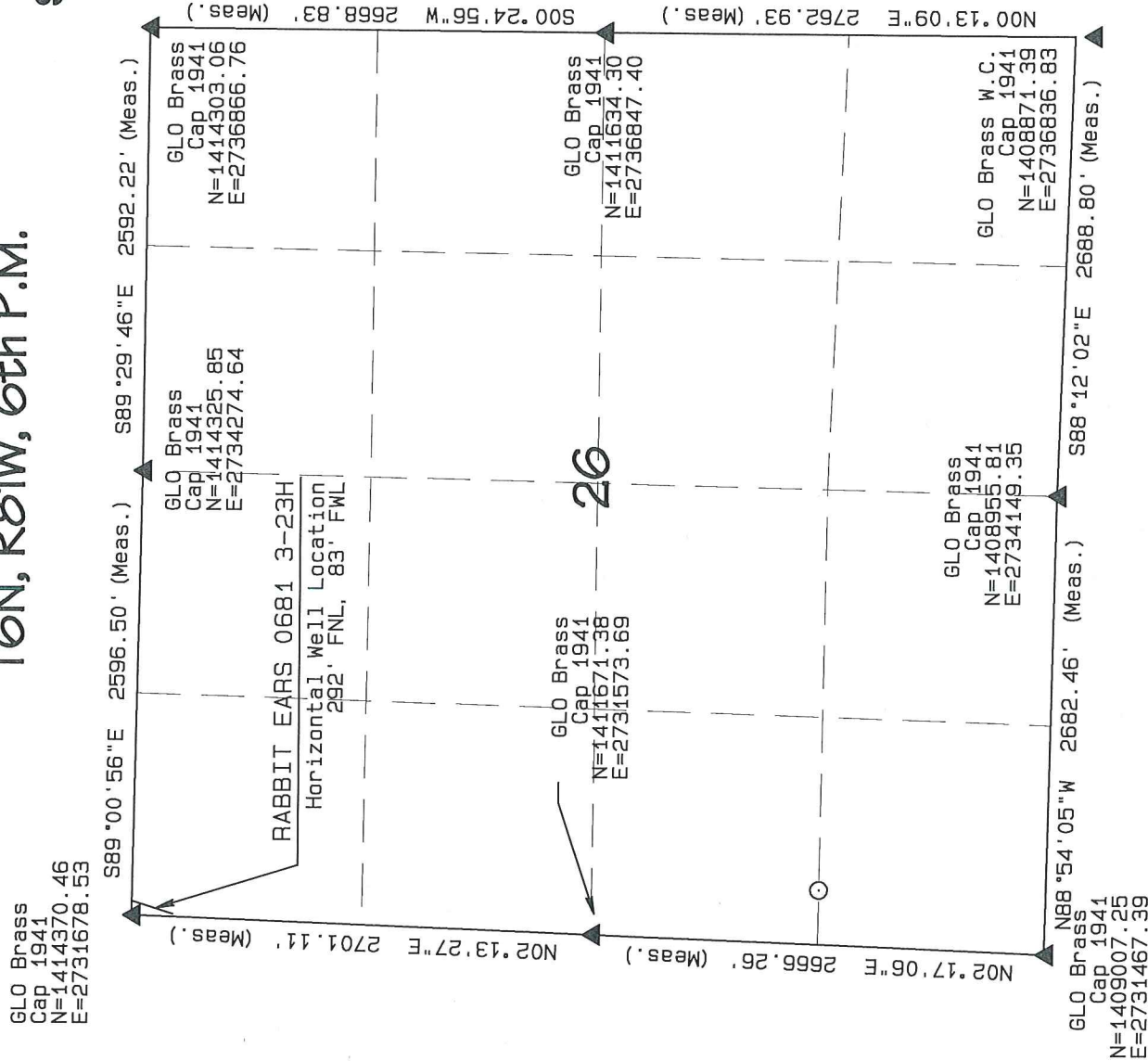


THIS IS TO CERTIFY THAT THE ABOVE PLAT WAS PREPARED FROM FIELD NOTES, A TRUE AND CORRECT COPY OF THE ORIGINAL SURVEYING AND THAT THE SAME ARE TRUE AND CORRECT TO THE BEST OF MY KNOWLEDGE AND BELIEF.



NORTH PARK ENGINEERING & CONSULTING, INC.
P.O. BOX 395
WALDEN, CO 80480
(970) 723-3725

DATE OF FIELD WORK: MAR 20, 2016 DRAWING COMPLETION: JUN 8, 2016
SURVEYED BY: ADL DRAWN BY: TKH CHECKED BY: RRM
REVISED: 9/7/2016

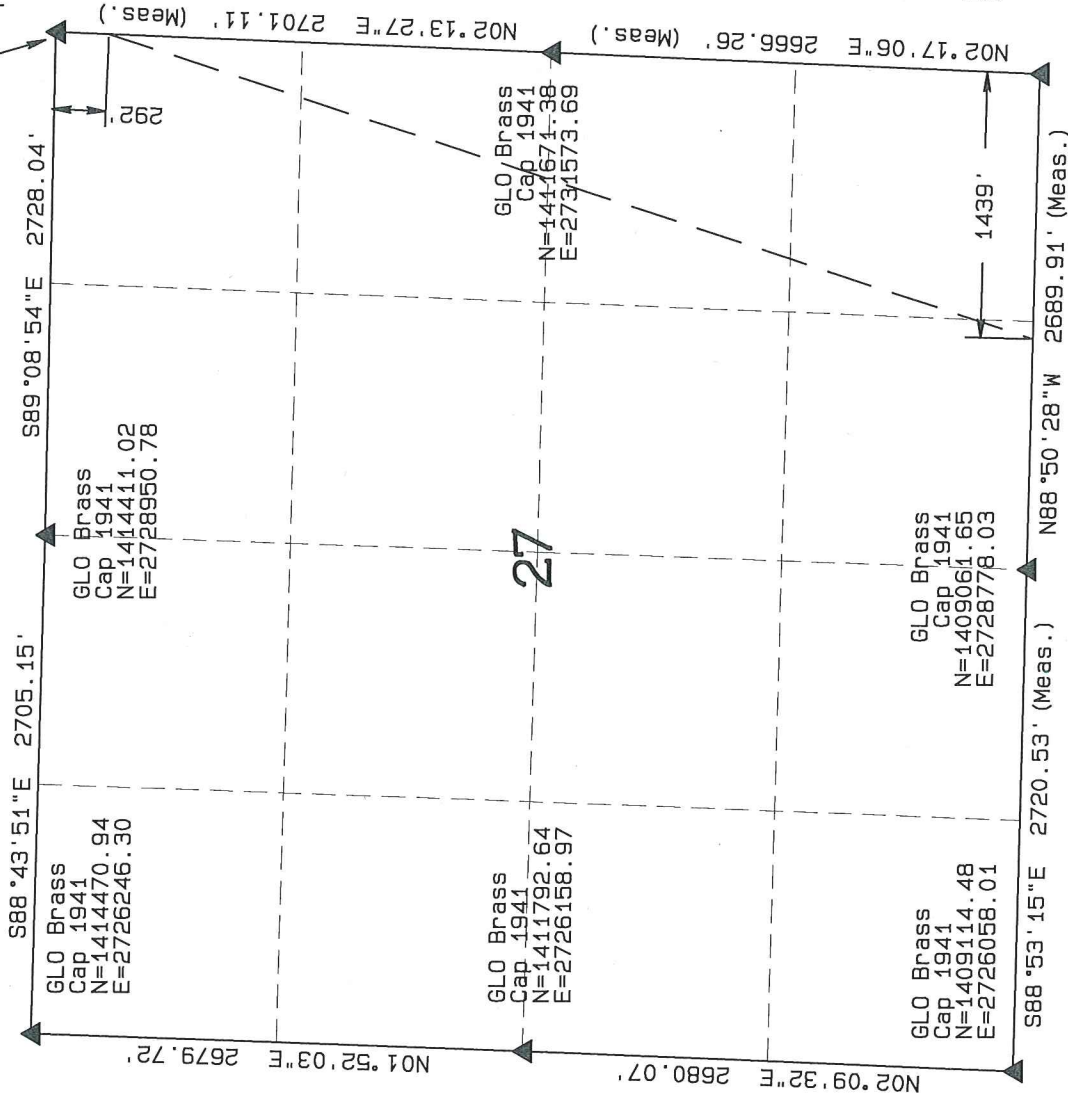


NAD 83 (TOP OF NIOBRARA)	NAD 83 (SURFACE LOCATION)
LATITUDE=40.477021°N LONGITUDE=106.457822°W	LATITUDE=40.477052°N LONGITUDE=106.453952°W
PROD = 1.912	
NAD 83 (LEASE ENTRY)	NAD 83 (TARGET BOTTOM HOLE)
LATITUDE=40.463144°N LONGITUDE=106.465603°W	LATITUDE=40.447568°N LONGITUDE=106.471983°W
NAD 83 (LANDING POINT LOCATION)	NAD 83 (LANDING POINT LOCATION)
LATITUDE=40.463144°N LONGITUDE=106.465603°W	LATITUDE=40.475075°N LONGITUDE=106.460714°W

T6N, R81W, 6th P.M.

SandRidge Exploration & Production, LLC

Intermediate Section, RABBIT EARS 0681 3-23H located as shown in the E1/2 of Section 27, T6N, R81W, 6th P.M., Jackson County, Colorado.



BASIS OF BEARINGS:

US STATE PLANE 1983
CO NORTH 0501 GRID

BASIS OF ELEVATION

SPOT ELEVATION AT THE NW CORNER OF SECTION 23, T6N, R81W, 6TH PM, TAKEN FROM THE SPICER PEAK QUADRANGLE, USGS 7.5 MIN QUAD (TOPOGRAPHIC MAP) WITH SAID ELEVATION MARKED AS BEING 8313 FEET.

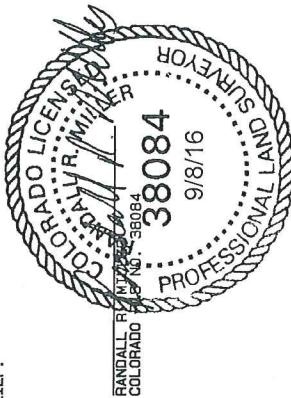
LEGEND

- 90° SYMBOL
- FOUND CORNER
- PROPOSED WELL
- PROPOSED BHL/LPL

GRAPHIC SCALE 1"=1000'



THIS IS TO CERTIFY THAT THE ABOVE PLAT WAS PREPARED FROM FIELD NOTES OF ACTUAL SURVEY AND THAT THE SAME ARE TRUE AND CORRECT TO THE BEST OF MY KNOWLEDGE AND BELIEF.



GLO Brass
Cap 1941
N=1409007.25
E=2731467.39

NORTH PARK ENGINEERING & CONSULTING, INC.

P.O. BOX 395
WALDEN, CO 80480
(970) 723-3725

NAD 83 (SURFACE LOCATION)

LATITUDE=40.477052°N
LONGITUDE=106.453952°W
PDOP = 1.912

NAD 83 (TOP OF NIOBRARA)

LATITUDE=40.477021°N
LONGITUDE=106.457822°W

NAD 83 (LEASE ENTRY)

LATITUDE=40.463144°N
LONGITUDE=106.465603°W

NAD 83 (TARGET BOTTOM HOLE)

LATITUDE=40.447568°N
LONGITUDE=106.471983°W

NAD 83 (LANDING POINT LOCATION)

LATITUDE=40.475075°N
LONGITUDE=106.460714°W

DATE OF FIELD WORK: MAR 20, 2016
DRAWN BY: TKH
SURVEYED BY: ADL
REVISOR: 9/7/2016
DRAWING COMPLETION: JUN 8, 2016
CHECKED BY: RRM

SandRidge Exploration & Production, LLC

DATE OF FIELD WORK: MAR 20, 2016	DRAWING COMPLETION: JUN 8, 2016
SURVEYED BY: ADL	DRAWN BY: TKH
REVISD: 9/7/2016	CHECKED BY: RRM

