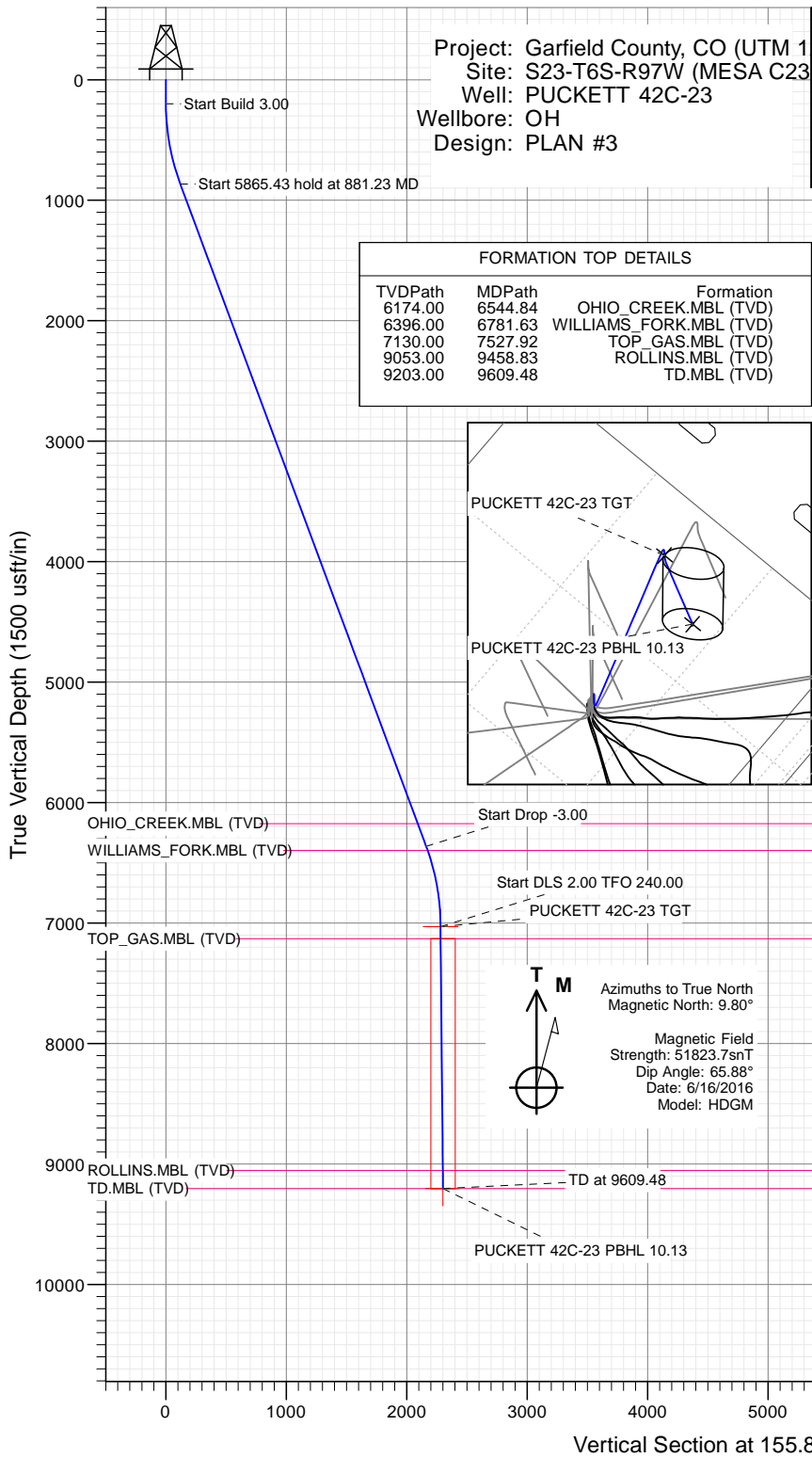




SECTION DETAILS

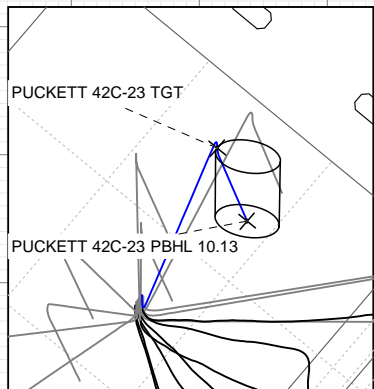
Sec	MD	Inc	Azi	TVD	+N/-S	+E/-W	Dleg	TFace	Vsect	Target
1	0.00	0.00	0.00	0.00	0.00	0.00	0.00	0.00	0.00	
2	200.00	0.00	0.00	200.00	0.00	0.00	0.00	0.00	0.00	
3	881.23	20.44	151.15	866.88	-105.30	58.00	3.00	151.15	119.80	
4	6746.66	20.44	151.15	6363.12	-1899.25	1046.10	0.00	0.00	2160.93	
5	7427.90	0.00	0.00	7030.00	-2004.54	1104.10	3.00	180.00	2280.73	PUCKETT 42C-23 TGT
6	7693.06	5.30	240.00	7294.78	-2010.68	1093.48	2.00	240.00	2281.99	
7	9609.48	5.30	240.00	9203.00	-2099.24	940.08	0.00	0.00	2300.12	PUCKETT 42C-23 PBHL 10.13

Project: Garfield County, CO (UTM 1
Site: S23-T6S-R97W (MESA C23)
Well: PUCKETT 42C-23
Wellbore: OH
Design: PLAN #3

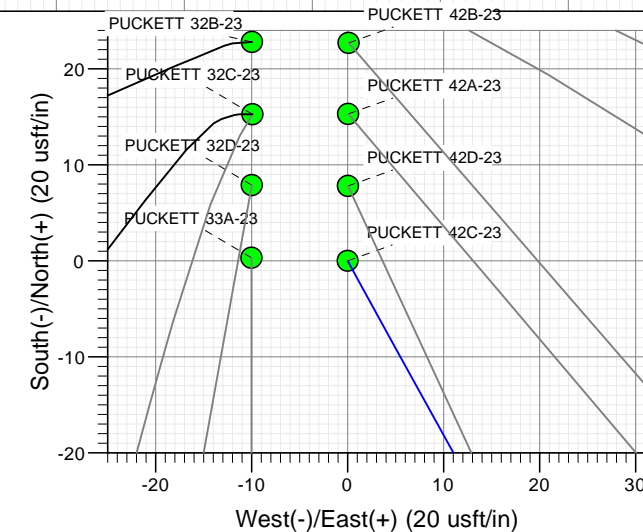
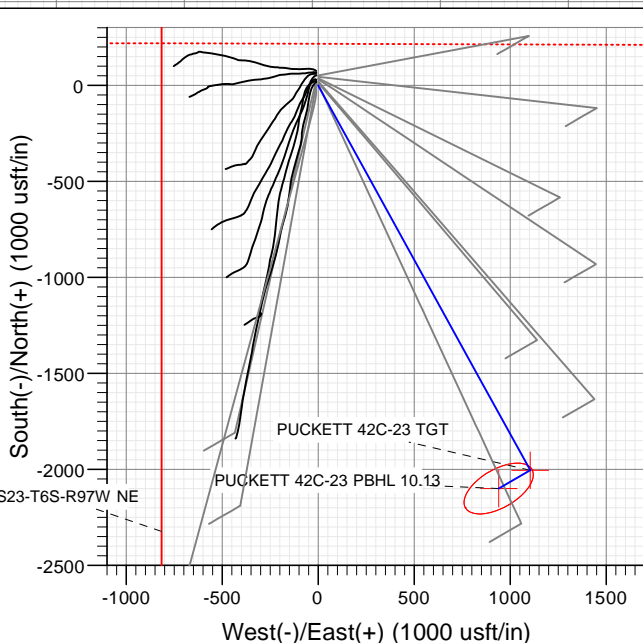


FORMATION TOP DETAILS

TVDPath	MDPath	Formation
6174.00	6544.84	OHIO_CREEK.MBL (TVD)
6396.00	6781.63	WILLIAMS_FORK.MBL (TVD)
7130.00	7527.92	TOP_GAS.MBL (TVD)
9053.00	9458.83	ROLLINS.MBL (TVD)
9203.00	9609.48	TD.MBL (TVD)



Type	Target	No Target (Freehand)	Azimuth	Origin Type	N/S	E/W	From TVD
Name	TVD	+N/-S	+E/-W	Latitude	Longitude		
PUCKETT 42C-23 TGT	7030.00	-2004.54	1104.10	39.509380	-108.179966		
PUCKETT 42C-23 PBHL	9203.00	-2004.26	940.21	39.509380	-108.183679		
PUCKETT 42C-23 PBHL 10.13	9203.00	-2099.24	940.08	39.509120	-108.180547		



WELL DETAILS: PUCKETT 42C-23

+N/-S	+E/-W	Northing	Ground Level:	8532.00	Latitude	Longitude
0.00	0.00	14361829.30	Easting	2434709.20	39.514881	-108.183877

CATHEDRAL



Cathedral Energy Services

Planning Report

Database:	USA EDM 5000 Multi Users DB	Local Co-ordinate Reference:	Well PUCKETT 42C-23
Company:	Caerus Oil & Gas	TVD Reference:	30' KB @ 8562.00usft (H&P 330)
Project:	Garfield County, CO (UTM 12N)	MD Reference:	30' KB @ 8562.00usft (H&P 330)
Site:	S23-T6S-R97W (MESA C23)	North Reference:	True
Well:	PUCKETT 42C-23	Survey Calculation Method:	Minimum Curvature
Wellbore:	OH		
Design:	PLAN #3		

Project	Garfield County, CO (UTM 12N)		
Map System:	Universal Transverse Mercator (US Survey Feet)	System Datum:	Mean Sea Level
Geo Datum:	NAD 1927 - Western US		
Map Zone:	Zone 12N (114 W to 108 W)		

Site		S23-T6S-R97W (MESA C23)			
Site Position:		Northing:	14,361,896.90 usft	Latitude:	39.515068
From:	Map	Easting:	2,434,697.40 usft	Longitude:	-108.183912
Position Uncertainty:	0.00 usft	Slot Radius:	13-3/16"	Grid Convergence:	1.79 °

Well	PUCKETT 42C-23					
Well Position	+N/-S	0.00 usft	Northing:	14,361,829.30 usft	Latitude:	39.514881
	+E/-W	0.00 usft	Easting:	2,434,709.20 usft	Longitude:	-108.183877
Position Uncertainty		0.00 usft	Wellhead Elevation:	0.00 usft	Ground Level:	8,532.00 usft

Wellbore	OH				
Magnetics	Model Name	Sample Date	Declination (°)	Dip Angle (°)	Field Strength (nT)
	HDGM	6/16/2016	9.80	65.88	51,824

Design	PLAN #3			
Audit Notes:				
Version:	Phase:	PLAN	Tie On Depth:	0.00
Vertical Section:	Depth From (TVD) (usft)	+N/-S (usft)	+E/-W (usft)	Direction (°)
	0.00	0.00	0.00	155.88

Plan Sections										
Measured Depth (usft)	Inclination (°)	Azimuth (°)	Vertical Depth (usft)	+N/-S (usft)	+E/-W (usft)	Dogleg Rate (°/100usft)	Build Rate (°/100usft)	Turn Rate (°/100usft)	TFO (°)	Target
0.00	0.00	0.00	0.00	0.00	0.00	0.00	0.00	0.00	0.00	
200.00	0.00	0.00	200.00	0.00	0.00	0.00	0.00	0.00	0.00	
881.23	20.44	151.15	866.88	-105.30	58.00	3.00	3.00	0.00	151.15	
6,746.66	20.44	151.15	6,363.12	-1,899.25	1,046.10	0.00	0.00	0.00	0.00	
7,427.90	0.00	0.00	7,030.00	-2,004.54	1,104.10	3.00	-3.00	0.00	180.00	PUCKETT 42C-23 TC
7,693.06	5.30	240.00	7,294.78	-2,010.68	1,093.48	2.00	2.00	-45.26	240.00	
9,609.48	5.30	240.00	9,203.00	-2,099.24	940.08	0.00	0.00	0.00	0.00	PUCKETT 42C-23 PE

Cathedral Energy Services

Planning Report

Database:	USA EDM 5000 Multi Users DB	Local Co-ordinate Reference:	Well PUCKETT 42C-23
Company:	Caerus Oil & Gas	TVD Reference:	30' KB @ 8562.00usft (H&P 330)
Project:	Garfield County, CO (UTM 12N)	MD Reference:	30' KB @ 8562.00usft (H&P 330)
Site:	S23-T6S-R97W (MESA C23)	North Reference:	True
Well:	PUCKETT 42C-23	Survey Calculation Method:	Minimum Curvature
Wellbore:	OH		
Design:	PLAN #3		

Planned Survey									
Measured Depth (usft)	Inclination (°)	Azimuth (°)	Vertical Depth (usft)	+N/-S (usft)	+E/-W (usft)	Vertical Section (usft)	Dogleg Rate (°/100usft)	Build Rate (°/100u)	Comments / Formations
0.00	0.00	0.00	0.00	0.00	0.00	0.00	0.00	0.00	
100.00	0.00	0.00	100.00	0.00	0.00	0.00	0.00	0.00	
200.00	0.00	0.00	200.00	0.00	0.00	0.00	0.00	0.00	Start Build 3.00
300.00	3.00	151.15	299.95	-2.29	1.26	2.61	3.00	3.00	
400.00	6.00	151.15	399.63	-9.16	5.05	10.43	3.00	3.00	
500.00	9.00	151.15	498.77	-20.60	11.34	23.43	3.00	3.00	
600.00	12.00	151.15	597.08	-36.56	20.14	41.59	3.00	3.00	
700.00	15.00	151.15	694.31	-57.00	31.40	64.86	3.00	3.00	
800.00	18.00	151.15	790.18	-81.88	45.10	93.16	3.00	3.00	
881.23	20.44	151.15	866.88	-105.30	58.00	119.80	3.00	3.00	Start 5865.43 hold at 881.23 MD
900.00	20.44	151.15	884.46	-111.04	61.16	126.34	0.00	0.00	
1,000.00	20.44	151.15	978.17	-141.62	78.01	161.13	0.00	0.00	
1,100.00	20.44	151.15	1,071.88	-172.21	94.85	195.93	0.00	0.00	
1,200.00	20.44	151.15	1,165.58	-202.79	111.70	230.73	0.00	0.00	
1,300.00	20.44	151.15	1,259.29	-233.38	128.54	265.53	0.00	0.00	
1,400.00	20.44	151.15	1,352.99	-263.96	145.39	300.33	0.00	0.00	
1,500.00	20.44	151.15	1,446.70	-294.55	162.24	335.13	0.00	0.00	
1,600.00	20.44	151.15	1,540.40	-325.13	179.08	369.93	0.00	0.00	
1,700.00	20.44	151.15	1,634.11	-355.72	195.93	404.73	0.00	0.00	
1,800.00	20.44	151.15	1,727.82	-386.30	212.78	439.53	0.00	0.00	
1,900.00	20.44	151.15	1,821.52	-416.89	229.62	474.33	0.00	0.00	
2,000.00	20.44	151.15	1,915.23	-447.47	246.47	509.13	0.00	0.00	
2,100.00	20.44	151.15	2,008.93	-478.06	263.31	543.93	0.00	0.00	
2,200.00	20.44	151.15	2,102.64	-508.64	280.16	578.73	0.00	0.00	
2,300.00	20.44	151.15	2,196.34	-539.23	297.01	613.52	0.00	0.00	
2,400.00	20.44	151.15	2,290.05	-569.81	313.85	648.32	0.00	0.00	
2,500.00	20.44	151.15	2,383.76	-600.40	330.70	683.12	0.00	0.00	
2,600.00	20.44	151.15	2,477.46	-630.98	347.55	717.92	0.00	0.00	
2,700.00	20.44	151.15	2,571.17	-661.57	364.39	752.72	0.00	0.00	
2,800.00	20.44	151.15	2,664.87	-692.15	381.24	787.52	0.00	0.00	
2,900.00	20.44	151.15	2,758.58	-722.74	398.08	822.32	0.00	0.00	
3,000.00	20.44	151.15	2,852.28	-753.32	414.93	857.12	0.00	0.00	
3,100.00	20.44	151.15	2,945.99	-783.91	431.78	891.92	0.00	0.00	
3,200.00	20.44	151.15	3,039.70	-814.49	448.62	926.72	0.00	0.00	
3,300.00	20.44	151.15	3,133.40	-845.08	465.47	961.52	0.00	0.00	
3,400.00	20.44	151.15	3,227.11	-875.67	482.32	996.32	0.00	0.00	
3,500.00	20.44	151.15	3,320.81	-906.25	499.16	1,031.11	0.00	0.00	
3,600.00	20.44	151.15	3,414.52	-936.84	516.01	1,065.91	0.00	0.00	
3,700.00	20.44	151.15	3,508.22	-967.42	532.85	1,100.71	0.00	0.00	
3,800.00	20.44	151.15	3,601.93	-998.01	549.70	1,135.51	0.00	0.00	
3,900.00	20.44	151.15	3,695.63	-1,028.59	566.55	1,170.31	0.00	0.00	
4,000.00	20.44	151.15	3,789.34	-1,059.18	583.39	1,205.11	0.00	0.00	
4,100.00	20.44	151.15	3,883.05	-1,089.76	600.24	1,239.91	0.00	0.00	
4,200.00	20.44	151.15	3,976.75	-1,120.35	617.09	1,274.71	0.00	0.00	
4,300.00	20.44	151.15	4,070.46	-1,150.93	633.93	1,309.51	0.00	0.00	
4,400.00	20.44	151.15	4,164.16	-1,181.52	650.78	1,344.31	0.00	0.00	
4,500.00	20.44	151.15	4,257.87	-1,212.10	667.62	1,379.11	0.00	0.00	
4,600.00	20.44	151.15	4,351.57	-1,242.69	684.47	1,413.91	0.00	0.00	
4,700.00	20.44	151.15	4,445.28	-1,273.27	701.32	1,448.71	0.00	0.00	
4,800.00	20.44	151.15	4,538.99	-1,303.86	718.16	1,483.50	0.00	0.00	
4,900.00	20.44	151.15	4,632.69	-1,334.44	735.01	1,518.30	0.00	0.00	
5,000.00	20.44	151.15	4,726.40	-1,365.03	751.86	1,553.10	0.00	0.00	

Cathedral Energy Services

Planning Report

Database:	USA EDM 5000 Multi Users DB	Local Co-ordinate Reference:	Well PUCKETT 42C-23
Company:	Caerus Oil & Gas	TVD Reference:	30' KB @ 8562.00usft (H&P 330)
Project:	Garfield County, CO (UTM 12N)	MD Reference:	30' KB @ 8562.00usft (H&P 330)
Site:	S23-T6S-R97W (MESA C23)	North Reference:	True
Well:	PUCKETT 42C-23	Survey Calculation Method:	Minimum Curvature
Wellbore:	OH		
Design:	PLAN #3		

Planned Survey									
Measured Depth (usft)	Inclination (°)	Azimuth (°)	Vertical Depth (usft)	+N/-S (usft)	+E/-W (usft)	Vertical Section (usft)	Dogleg Rate (°/100usft)	Build Rate (°/100u)	Comments / Formations
5,100.00	20.44	151.15	4,820.10	-1,395.61	768.70	1,587.90	0.00	0.00	
5,200.00	20.44	151.15	4,913.81	-1,426.20	785.55	1,622.70	0.00	0.00	
5,300.00	20.44	151.15	5,007.51	-1,456.78	802.39	1,657.50	0.00	0.00	
5,400.00	20.44	151.15	5,101.22	-1,487.37	819.24	1,692.30	0.00	0.00	
5,500.00	20.44	151.15	5,194.93	-1,517.95	836.09	1,727.10	0.00	0.00	
5,600.00	20.44	151.15	5,288.63	-1,548.54	852.93	1,761.90	0.00	0.00	
5,700.00	20.44	151.15	5,382.34	-1,579.12	869.78	1,796.70	0.00	0.00	
5,800.00	20.44	151.15	5,476.04	-1,609.71	886.63	1,831.50	0.00	0.00	
5,900.00	20.44	151.15	5,569.75	-1,640.29	903.47	1,866.30	0.00	0.00	
6,000.00	20.44	151.15	5,663.45	-1,670.88	920.32	1,901.09	0.00	0.00	
6,100.00	20.44	151.15	5,757.16	-1,701.46	937.16	1,935.89	0.00	0.00	
6,200.00	20.44	151.15	5,850.87	-1,732.05	954.01	1,970.69	0.00	0.00	
6,300.00	20.44	151.15	5,944.57	-1,762.63	970.86	2,005.49	0.00	0.00	
6,400.00	20.44	151.15	6,038.28	-1,793.22	987.70	2,040.29	0.00	0.00	
6,500.00	20.44	151.15	6,131.98	-1,823.80	1,004.55	2,075.09	0.00	0.00	
6,544.84	20.44	151.15	6,174.00	-1,837.52	1,012.10	2,090.69	0.00	0.00	OHIO_CREEK.MBL (TVD)
6,600.00	20.44	151.15	6,225.69	-1,854.39	1,021.40	2,109.89	0.00	0.00	
6,700.00	20.44	151.15	6,319.39	-1,884.97	1,038.24	2,144.69	0.00	0.00	
6,746.66	20.44	151.15	6,363.12	-1,899.25	1,046.10	2,160.93	0.00	0.00	Start Drop -3.00
6,781.63	19.39	151.15	6,396.00	-1,909.68	1,051.85	2,172.80	3.00	-3.00	WILLIAMS_FORK.MBL (TVD)
6,800.00	18.84	151.15	6,413.35	-1,914.95	1,054.75	2,178.79	3.00	-3.00	
6,900.00	15.84	151.15	6,508.80	-1,941.05	1,069.13	2,208.48	3.00	-3.00	
7,000.00	12.84	151.15	6,605.67	-1,962.73	1,081.07	2,233.16	3.00	-3.00	
7,100.00	9.84	151.15	6,703.71	-1,979.95	1,090.55	2,252.75	3.00	-3.00	
7,200.00	6.84	151.15	6,802.64	-1,992.65	1,097.55	2,267.20	3.00	-3.00	
7,300.00	3.84	151.15	6,902.20	-2,000.79	1,102.04	2,276.47	3.00	-3.00	
7,400.00	0.84	151.15	7,002.10	-2,004.37	1,104.00	2,280.53	3.00	-3.00	
7,427.90	0.00	0.00	7,030.00	-2,004.54	1,104.10	2,280.73	3.00	-3.00	Start DLS 2.00 TFO 240.00
7,500.00	1.44	240.00	7,102.09	-2,005.00	1,103.31	2,280.83	2.00	2.00	
7,527.92	2.00	240.00	7,130.00	-2,005.42	1,102.59	2,280.91	2.00	2.00	TOP_GAS.MBL (TVD)
7,600.00	3.44	240.00	7,202.00	-2,007.13	1,099.63	2,281.26	2.00	2.00	
7,693.06	5.30	240.00	7,294.78	-2,010.68	1,093.48	2,281.99	2.00	2.00	Start 1916.42 hold at 7693.06 MD
7,700.00	5.30	240.00	7,301.69	-2,011.00	1,092.93	2,282.05	0.00	0.00	
7,800.00	5.30	240.00	7,401.27	-2,015.62	1,084.92	2,283.00	0.00	0.00	
7,900.00	5.30	240.00	7,500.84	-2,020.24	1,076.92	2,283.95	0.00	0.00	
8,000.00	5.30	240.00	7,600.41	-2,024.86	1,068.91	2,284.89	0.00	0.00	
8,100.00	5.30	240.00	7,699.98	-2,029.48	1,060.91	2,285.84	0.00	0.00	
8,200.00	5.30	240.00	7,799.55	-2,034.10	1,052.90	2,286.79	0.00	0.00	
8,300.00	5.30	240.00	7,899.13	-2,038.72	1,044.90	2,287.73	0.00	0.00	
8,400.00	5.30	240.00	7,998.70	-2,043.35	1,036.90	2,288.68	0.00	0.00	
8,500.00	5.30	240.00	8,098.27	-2,047.97	1,028.89	2,289.62	0.00	0.00	
8,600.00	5.30	240.00	8,197.84	-2,052.59	1,020.89	2,290.57	0.00	0.00	
8,700.00	5.30	240.00	8,297.41	-2,057.21	1,012.88	2,291.52	0.00	0.00	
8,800.00	5.30	240.00	8,396.99	-2,061.83	1,004.88	2,292.46	0.00	0.00	
8,900.00	5.30	240.00	8,496.56	-2,066.45	996.87	2,293.41	0.00	0.00	
9,000.00	5.30	240.00	8,596.13	-2,071.07	988.87	2,294.35	0.00	0.00	
9,100.00	5.30	240.00	8,695.70	-2,075.69	980.86	2,295.30	0.00	0.00	
9,200.00	5.30	240.00	8,795.27	-2,080.32	972.86	2,296.25	0.00	0.00	
9,300.00	5.30	240.00	8,894.85	-2,084.94	964.86	2,297.19	0.00	0.00	
9,400.00	5.30	240.00	8,994.42	-2,089.56	956.85	2,298.14	0.00	0.00	
9,458.83	5.30	240.00	9,053.00	-2,092.28	952.14	2,298.70	0.00	0.00	ROLLINS.MBL (TVD)
9,500.00	5.30	240.00	9,093.99	-2,094.18	948.85	2,299.09	0.00	0.00	

Cathedral Energy Services

Planning Report

Database:	USA EDM 5000 Multi Users DB	Local Co-ordinate Reference:	Well PUCKETT 42C-23
Company:	Caerus Oil & Gas	TVD Reference:	30' KB @ 8562.00usft (H&P 330)
Project:	Garfield County, CO (UTM 12N)	MD Reference:	30' KB @ 8562.00usft (H&P 330)
Site:	S23-T6S-R97W (MESA C23)	North Reference:	True
Well:	PUCKETT 42C-23	Survey Calculation Method:	Minimum Curvature
Wellbore:	OH		
Design:	PLAN #3		

Planned Survey									
Measured Depth (usft)	Inclination (°)	Azimuth (°)	Vertical Depth (usft)	+N/-S (usft)	+E/-W (usft)	Vertical Section (usft)	Dogleg Rate (°/100usft)	Build Rate (°/100u)	Comments / Formations
9,600.00	5.30	240.00	9,193.56	-2,098.80	940.84	2,300.03	0.00	0.00	
9,609.48	5.30	240.00	9,203.00	-2,099.24	940.08	2,300.12	0.00	0.00	TD at 9609.48 - TD.MBL (TVD)

Targets									
Target Name	- hit/miss target	Dip Angle (°)	Dip Dir. (°)	TVD (usft)	+N/-S (usft)	+E/-W (usft)	Northing (usft)	Easting (usft)	Latitude Longitude
PUCKETT 42C-23 PBHI	- plan misses target center by 133.54usft at 9609.48usft MD (9203.00 TVD, -2099.24 N, 940.08 E)	0.00	0.00	9,203.00	-2,004.26	846.21	14,359,852.50	2,435,617.70	39.509380 -108.180879
	- Circle (radius 100.00)								
PUCKETT 42C-23 PBHI	- plan hits target center	0.00	0.00	9,203.00	-2,099.24	940.08	14,359,760.50	2,435,714.50	39.509120 -108.180547
	- Ellipse (radii L200.00 W100.00 on 240.00 azi)								
PUCKETT 42C-23 TGT	- plan hits target center	0.00	0.00	7,030.00	-2,004.54	1,104.10	14,359,860.28	2,435,875.47	39.509380 -108.179966
	- Point								

Formations						
Measured Depth (usft)	Vertical Depth (usft)	Name	Lithology	Dip (°)	Dip Direction (°)	
6,544.84	6,174.00	OHIO_CREEK.MBL (TVD)				
6,781.63	6,396.00	WILLIAMS_FORK.MBL (TVD)				
7,527.92	7,130.00	TOP_GAS.MBL (TVD)				
9,458.83	9,053.00	ROLLINS.MBL (TVD)				
9,609.48	9,203.00	TD.MBL (TVD)				

Plan Annotations				
Measured Depth (usft)	Vertical Depth (usft)	Local Coordinates		Comment
		+N/-S (usft)	+E/-W (usft)	
200.00	200.00	0.00	0.00	Start Build 3.00
881.23	866.88	-105.30	58.00	Start 5865.43 hold at 881.23 MD
6,746.66	6,363.12	-1,899.25	1,046.10	Start Drop -3.00
7,427.90	7,030.00	-2,004.54	1,104.10	Start DLS 2.00 TFO 240.00
7,693.06	7,294.78	-2,010.68	1,093.48	Start 1916.42 hold at 7693.06 MD
9,609.48	9,203.00	-2,099.24	940.08	TD at 9609.48